

Marie Krutzfield, Recorder
 Jones County, Iowa

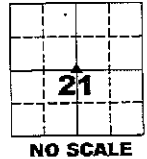
PREPARED BY
 CLARENCE J. WALTON, JONES COUNTY ENGINEER'S OFFICE, 19501 HWY. 64, ANAMOSA, IOWA, 52205 (319) 462-3785

UNITED STATES PUBLIC LAND SURVEY CORNER CERTIFICATE

**LAND SURVEY MONUMENTS SITUATED IN SECTION 21, TOWNSHIP 84 NORTH,
 RANGE 4 WEST OF THE 5TH PRINCIPAL MERIDIAN, JONES COUNTY, IOWA.**

OFFICE FILE NO.

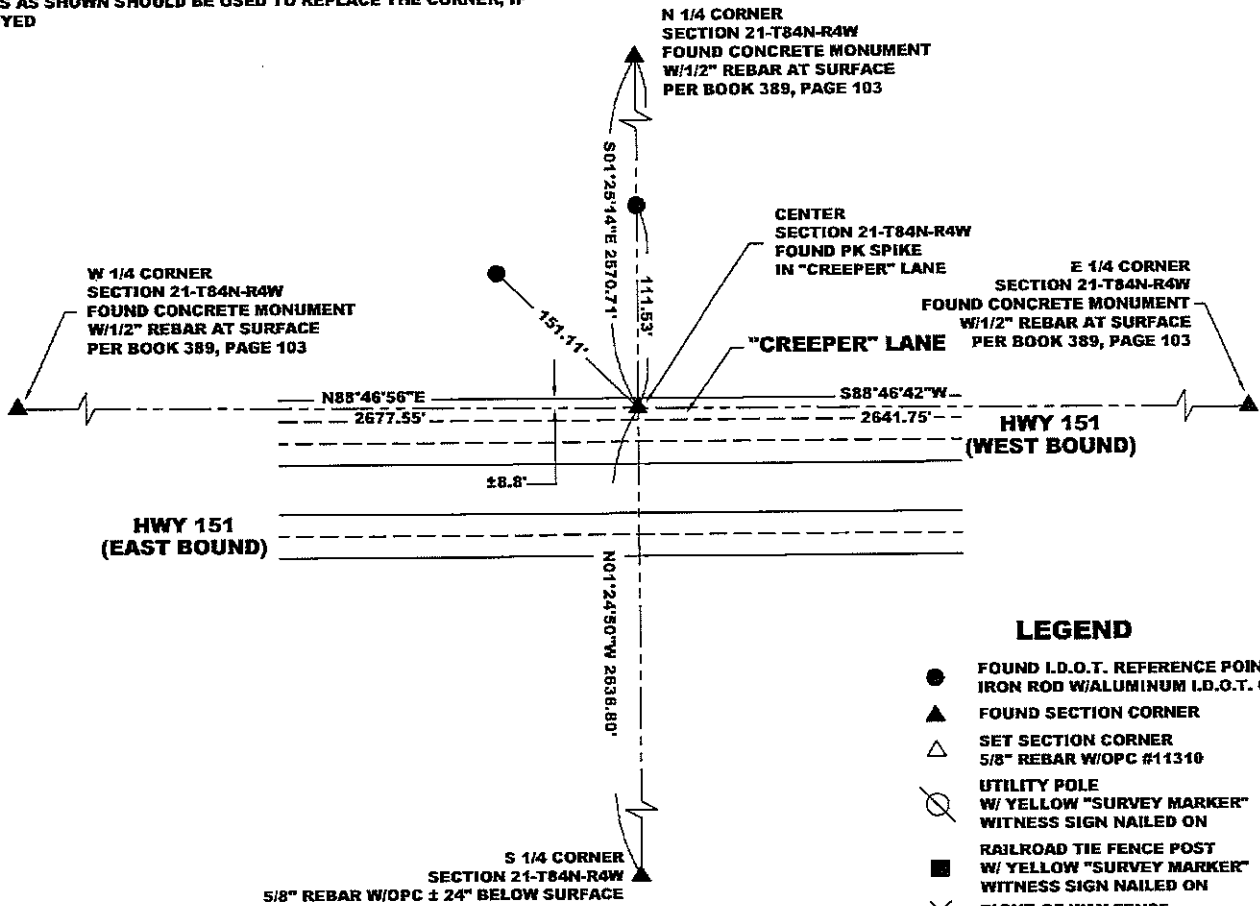
CORNER SECTION TOWNSHIP RANGE
 CENTER 21 84N 4W



NO SCALE

STATE PLANE COORDINATE
 NAD 83 IOWA NORTH
 N 3496521.55
 E 5514058.80

NOTE:
 THE STATE PLANE COORDINATE AS INDICATED IS FOR CONVENIENCE ONLY.
 THE TIES AS SHOWN SHOULD BE USED TO REPLACE THE CORNER, IF
 DESTROYED

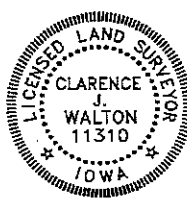


LEGEND

- FOUND I.D.O.T. REFERENCE POINT
IRON ROD W/ALUMINUM I.D.O.T. CAP
- ▲ FOUND SECTION CORNER
- △ SET SECTION CORNER
5/8" REBAR W/OPC #11310
- UTILITY POLE
W/ YELLOW "SURVEY MARKER"
WITNESS SIGN NAILED ON
- RAILROAD TIE FENCE POST
W/ YELLOW "SURVEY MARKER"
WITNESS SIGN NAILED ON
- ✕ RIGHT-OF-WAY FENCE
- OPC ORANGE PLASTIC CAP
- () RECORDED AS

PREVIOUSLY RECORDED IN BOOK 389, PAGE 103

MONUMENT DESCRIPTION AND HOW ESTABLISHED FOUND PK SPIKE IN "CREEPER LANE" OF WEST BOUND HWY 151 AT INTERSECTION OF LINE FROM N 1/4 CORNER TO S 1/4 CORNER WITH LINE FROM W 1/4 CORNER TO E 1/4, ALL IN SECTION SECTION 21, TOWNSHIP 84 NORTH, RANGE 4 WEST OF THE 5TH PRINCIPAL MERIDIAN, JONES COUNTY, IOWA.



I hereby certify that this land surveying document and the related survey work was performed by me or under my direct personal supervision and that I am a duly registered Land Surveyor under the laws of the State of Iowa.
 Signed: *Clarence J. Walton* 3/11/08

Clarence J. Walton, L.S.
 My Registration Renewal Date is December 31, 2009
 Iowa License Number 11310
 Pages or sheets covered by this seal: 1 of 1.

- A. THERE IS NO CERTIFICATE FOR THE CORNER ON FILE WITH THE RECORDER OF THE COUNTY IN WHICH THE CORNER IS LOCATED.
- B. THE CORNER MONUMENT HAS BEEN REPLACED OR MODIFIED.
- C. THE SURVEYOR IN RESPONSIBLE CHARGE OF THE LAND SURVEYING ACCEPTS A CORNER POSITION THAT DIFFERS FROM THAT SHOWN IN THE PUBLIC RECORDS OF THE COUNTY IN WHICH THE CORNER IS LOCATED.
- D. THE REFERENCE TIES REFERRED TO IN AN EXISTING PUBLIC RECORD NO LONGER EXIST.

CORNERS TO BE INDEXED

CORNER	SECTION	TOWNSHIP	RANGE
CENTER	21	84N	4W

JONES COUNTY ENGINEER'S OFFICE



19501 HWY. 64, ANAMOSA, IOWA 52205
 (319) 462-3785