

UNITED STATES PUBLIC LAND SURVEY CORNER CERTIFICATE

Land Survey Monuments situated in Section 21, Township 84N, Range 4W, of the Fifth Principal Meridian, Jones County, Iowa. Previously recorded in SEE NOTE in the Office of the County Recorder

Monument Description and Remarks:

SE CORNER - FD. 1/2" IRON ROD IN CONCRETE MONUMENT

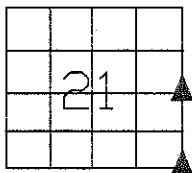
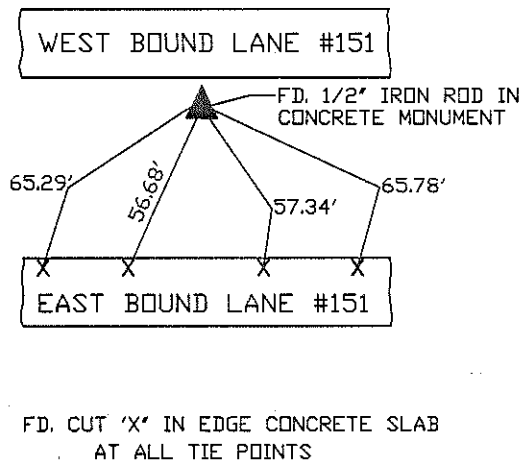
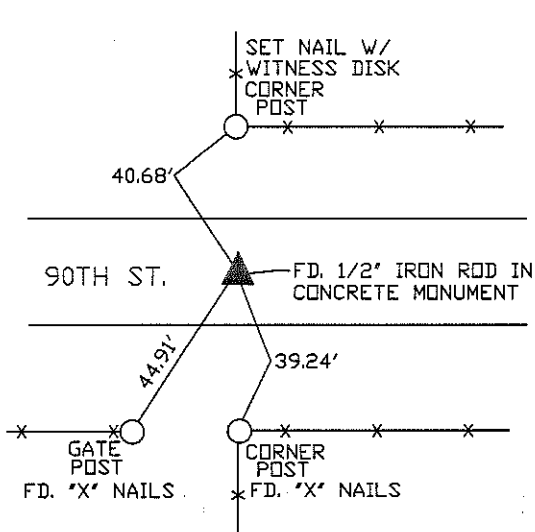
E1/4 CORNER - FD. 1/2" IRON ROD IN CONCRETE MONUMENT

NOTE - THE SE CORNER WAS PREVIOUSLY TIED AND RECORDED IN FILE NO. 2002 3629

SE CORNER

PLAN VIEW

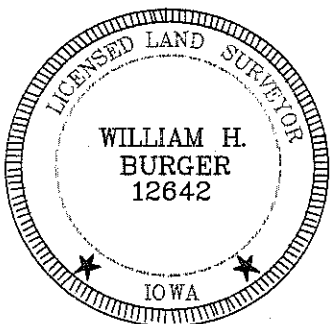
E1/4 CORNER



SEC. 21 TWP. 84N RANGE 4W

CORNERS TO BE INDEXED

SE CORNER	21	84N	4W
E1/4 CORNER	21	84N	4W



I hereby certify that this land surveying document was prepared and related survey work was performed by me or under my direct personal supervision and that I am a duly licensed Land Surveyor under the laws of the State of Iowa.

William H. Burger 11/2/11
 William H. Burger Date

License number 12642

My license renewal date is December 31, 2012

Pages or Sheets covered by this seal: Sheet 1 of 1

UNITED STATES PUBLIC LAND SURVEY CORNER CERTIFICATE OF

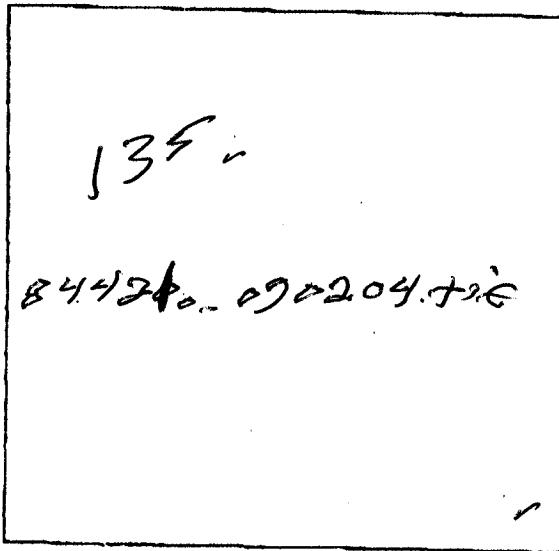
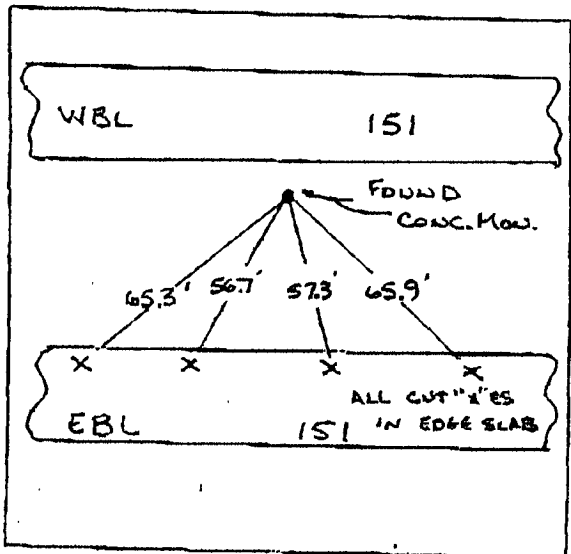
LAND SURVEY MONUMENTS SITUATED IN SECTION 21, TOWNSHIP 84, RANGE 4W, OF THE 5TH PRINCIPAL MERIDIAN JONES COUNTY IOWA
PREVIOUSLY RECORDED IN _____ IN COUNTY RECORDER'S OFFICE

(Show reason for preparing this certificate, the evidence and detailed procedures used in establishing the corner positions and monumentation found or placed.)

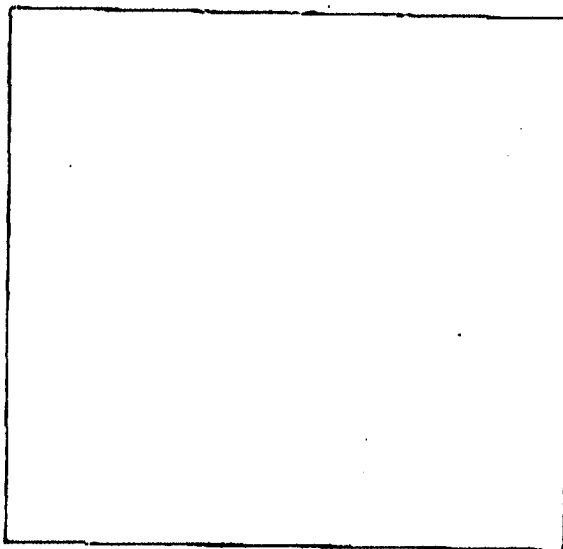
MONUMENT DESCRIPTION AND REMARKS: E 1/4 CORNER SEC. 21-84-4W
FOUND CONC. MON.

PLAN - VIEW

(Show a minimum of three reference ties to durable physical objects, relevant monuments and physical conditions that will enable recovery of the corner.)



ALL DISTANCES
SLOPE CHAINED



I hereby certify that the survey work was completed and this certificate was prepared by me or under my direct personal supervision and that I am a duly registered land surveyor under the laws of the state of Iowa.

Signature: _____
800

MANCHESTER CONST

LAND CORNERS TO BE RECORDED

Corners	Section	Twp.	Range
E 1/4	21	84	4W

09/02/04 THU 18:16 FAX 319 927 2474

FROM IDOT
9-02-04

SECTION CORNER CERTIFICATE

OF
 LAND SURVEY MONUMENTS SITUATED IN SECTION 21, TOWNSHIP 84 NORTH,
 RANGE 4 WEST, OF THE FIFTH PRINCIPAL MERIDIAN, Jones, COUNTY, IOWA.

PREVIOUSLY RECORDED IN BOOK _____ AT PAGE _____.

FOR RECORDER'S USE

REASON FOR PREPARING CERTIFICATE:

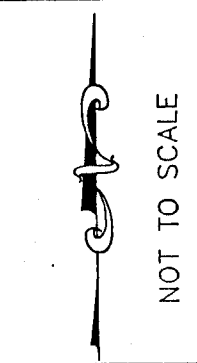
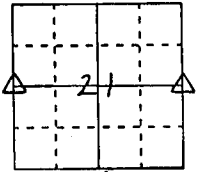
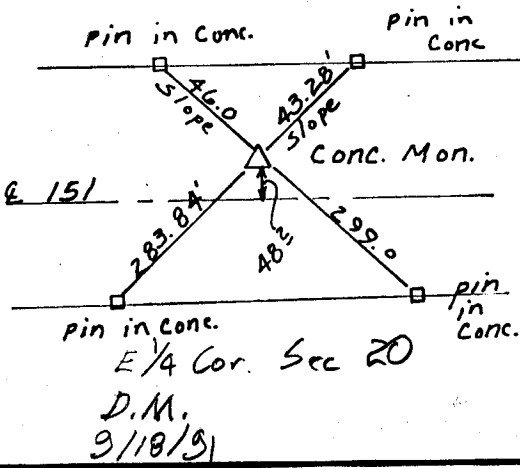
- A) THERE IS NO CERTIFICATE FOR THE CORNER ON FILE WITH THE RECORDER OF THE COUNTY IN WHICH THE CORNER IS LOCATED.
- B) CORNER POSITION DIFFERS FROM THAT SHOWN IN THE PUBLIC RECORDS OF THE COUNTY IN WHICH THE CORNER IS LOCATED.
- C) THE CORNER MONUMENT HAS BEEN REPLACED OR MODIFIED.
- D) THE REFERENCE TIES REFERRED TO IN AN EXISTING PUBLIC RECORD ARE INCORRECT.

MONUMENT DESCRIPTION AND REMARKS :

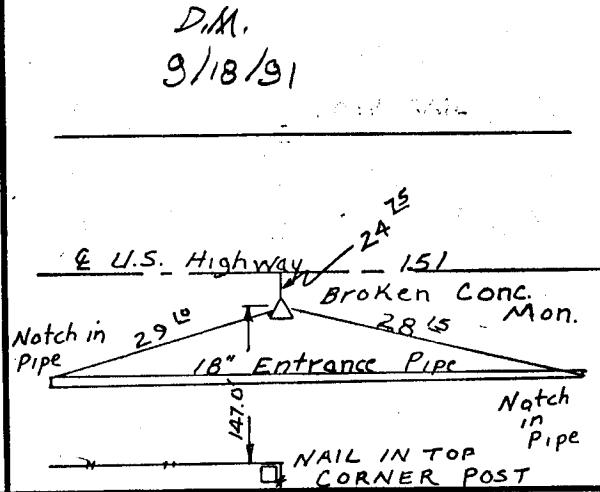
W 1/4 Found Conc. Mon. w 1/2" pin 8" above ground
E 1/4 Found Conc. Mon broken, County Engr. ties

RECOVERY TIE DRAWING

W 1/4 Corner Sec. 21-T84N-R4W



E 1/4 Corner Sec. 21-T84N-R4W



I, GLEN D. MEISNER, CERTIFY THAT THE CORNER LOCATION(S) SHOWN ON THIS RECORD WERE DETERMINED BY ME OR UNDER MY DIRECTION AND CONTROL AND THAT THIS U.S. PUBLIC LAND SURVEY MONUMENT RECORD IS CORRECT AND COMPLETE TO THE BEST OF MY KNOWLEDGE AND BELIEF.

Glen D. Meisner 8-29-91
 GLEN D. MEISNER L.S. NO 8165 DATE

D I Z E C O R N E R	△ GOVERNMENT CORNER ○ 5/8" THE PIN SET --- CENTERLINE -x-x- EXISTING FENCE LINE - - - - R.O.W. LINE	SHEET TITLE: U.S. PUBLIC LAND SURVEY RECORD PROJECT TITLE:	HALL AND HALL ENGINEERS, INC. 226 29TH STREET DRIVE S.E. CEDAR RAPIDS, IOWA 52403 319-362-9548
	DWN GDM KIC APP DATE	SCALE FNO PROJ 4485	

addn. no 2991 844210-062991