

Instrument #: 2018-0375  
 02/12/2018 09:47:49 AM Total Pages: 1  
 ZSC SECTION CORNER CERTIFICATE  
 Recording Fee: \$7.00 Transfer Tax: \$0  
 Sheri L. Jones, Recorder, Jones County Iowa



PREPARED BY: SCOTT SURVEY, INC. P.O. BOX 315 CENTER POINT IOWA 52213 319-540-5263

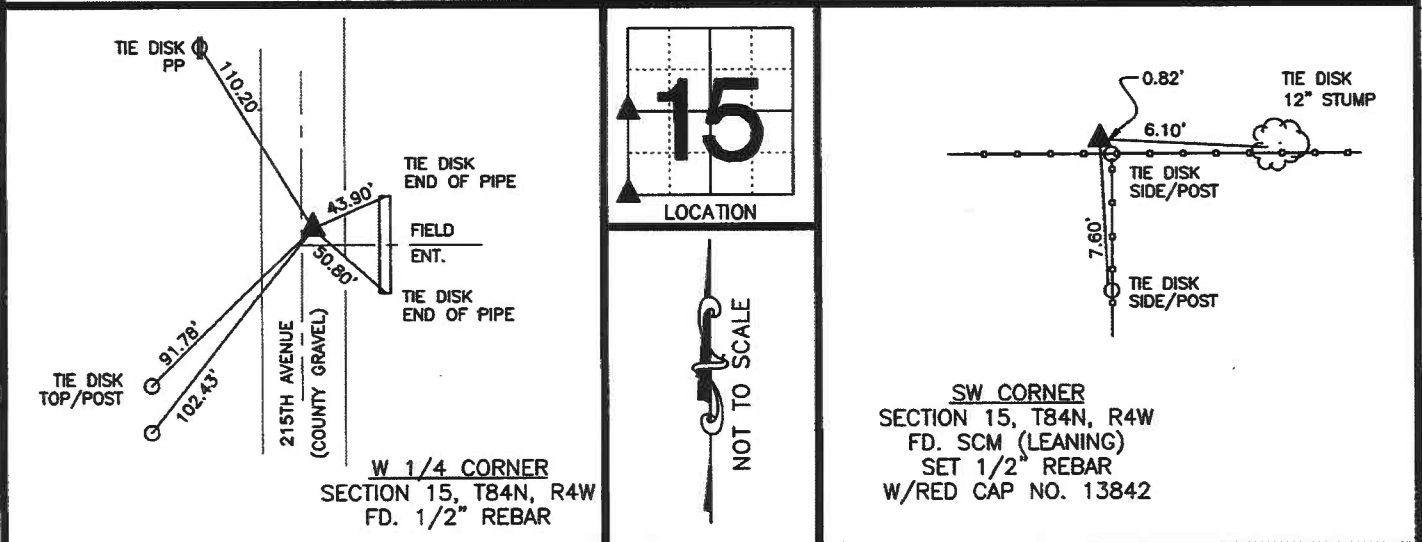
# U.S. PUBLIC LAND SURVEY CORNER CERTIFICATE

FOR LAND SURVEY MONUMENTS SITUATED IN SECTION 15, TOWNSHIP 84 NORTH, RANGE 4 WEST, OF THE FIFTH PRINCIPAL MERIDIAN, JONES COUNTY, IOWA

REASON FOR PREPARING CERTIFICATE:

- A) THERE IS NO CERTIFICATE FOR THE CORNER ON FILE WITH THE RECORDER.  
 B) CORNER TIES DIFFER FROM PREVIOUSLY RECORDED CERTIFICATE.

## RECOVERY TIE DRAWING

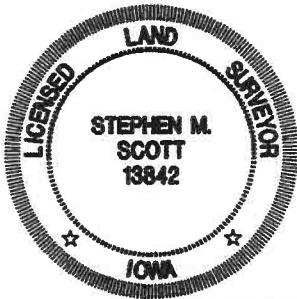


MONUMENT DESCRIPTION AND REMARKS :

FOUND MONUMENT ACCORDING TO PREVIOUSLY RECORDED CORNER CERTIFICATE FOUND IN BOOK 321, PAGE 36 IN THE OFFICE OF THE RECORDER, JONES COUNTY, IOWA.

MONUMENT DESCRIPTION AND REMARKS :

FOUND MONUMENT ACCORDING TO PREVIOUSLY RECORDED CORNER CERTIFICATE FOUND IN BOOK 389, PAGE 100 IN THE OFFICE OF THE RECORDER, JONES COUNTY, IOWA.



I hereby certify that this land surveying document was prepared and the related survey work was performed by me or under my direct personal supervision and that I am a duly licensed Professional Land Surveyor under the laws of the State of Iowa.

*Stephen M. Scott*  
 \_\_\_\_\_, 2018  
 STEPHEN M. SCOTT, L.S. Iowa Lic. No. 13842

My license renewal date is December 31, 2018.

- △ GOVERNMENT CORNER
- 1/2" TIE PIN SET
- CENTERLINE
- EXISTING FENCE LINE
- R.O.W. LINE

### U.S. PUBLIC LAND SURVEY CORNER CERTIFICATE

SECTION 15, T84N, R4W  
 W 1/4 CORNER  
 SW CORNER

PROJECT NO.  
 1777101

# SECTION CORNER CERTIFICATE

OF  
 LAND SURVEY MONUMENTS SITUATED IN SECTION 16, TOWNSHIP 84 NORTH,  
 RANGE 4 WEST, OF THE FIFTH PRINCIPAL MERIDIAN, JONES, COUNTY, IOWA.

PREVIOUSLY RECORDED IN BOOK \_\_\_\_\_ AT PAGE \_\_\_\_\_.

FOR RECORDER'S USE

**REASON FOR PREPARING CERTIFICATE:**

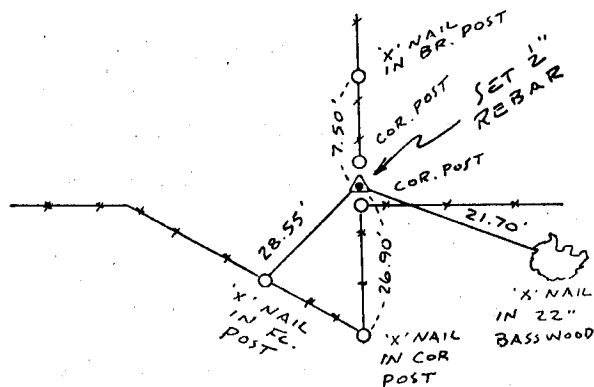
- A) THERE IS NO CERTIFICATE FOR THE CORNER ON FILE WITH THE RECORDER OF THE COUNTY IN WHICH THE CORNER IS LOCATED.
- B) CORNER POSITION DIFFERS FROM THAT SHOWN IN THE PUBLIC RECORDS OF THE COUNTY IN WHICH THE CORNER IS LOCATED.
- C) THE CORNER MONUMENT HAS BEEN REPLACED OR MODIFIED.
- D) THE REFERENCE TIES REFERRED TO IN AN EXISTING PUBLIC RECORD ARE INCORRECT.

**MONUMENT DESCRIPTION AND REMARKS :**

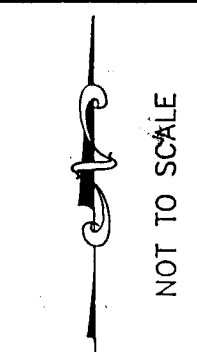
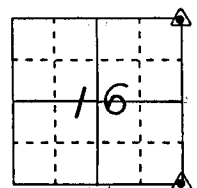
S.E. CORNER SECTION 16-T84N-R4W FOUND CONCRETE  
MONUMENT (EXPOSED) IN LINE WITH FC. SOUTH 0.70' NORTH  
OF CORNER POST  
N.E. CORNER SECTION 16-T84N-R4W SET 1/2" REBAR  
BETWEEN COR. POST 2" ABOVE GROUND W/C.S. CAP # 8165

## RECOVERY TIE DRAWING

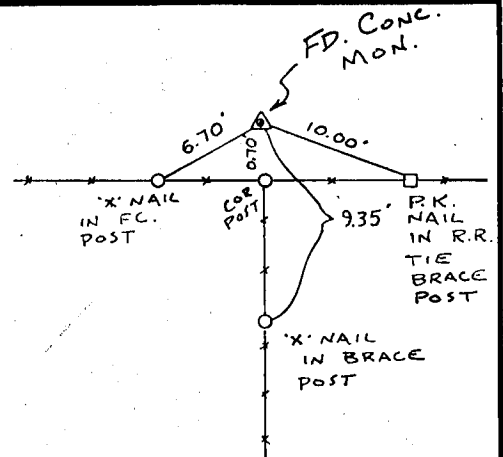
N.E. Cor. 16-84-4



ON CARD 5-29-92 MS



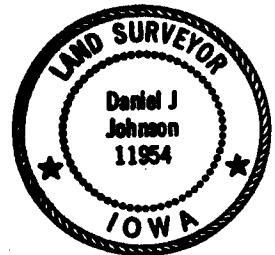
S.E. Cor. 16-84-4



5-29-92 MS. NE. COR. SEC. 21

I, DANIEL J. JOHNSON, - CERTIFY THAT THE CORNER LOCATION(S) SHOWN ON THIS RECORD WERE DETERMINED BY ME OR UNDER MY DIRECTION AND CONTROL AND THAT THIS U.S. PUBLIC LAND SURVEY MONUMENT RECORD IS CORRECT AND COMPLETE TO THE BEST OF MY KNOWLEDGE AND BELIEF.

Daniel J. Johnson 5-29-92  
 DANIEL J. JOHNSON L.S. NO 11954 DATE



LEGEND	△ GOVERNMENT CORNER ○ 5/8" TIE PIN SET — CENTERLINE - - - EXISTING FENCE LINE - - - R.O.W. LINE	SHEET TITLE: U.S. PUBLIC LAND SURVEY RECORD PROJECT TITLE: JONES COUNTY PROJECT	<b>H</b> HALL AND HALL ENGINEERS, INC. 226 29TH STREET DRIVE S.E. CEDAR RAPIDS, IOWA 52403 319-362-9548			
	DWN RWB	CHK D.J.J.		APP	DATE 2-21-92	SCALE NONE

84416e-052992 84421e-052992