

PREPARED BY

STEPHEN MICHAEL BRAIN, BRAIN ENGINEERING, INC., 1540 MIDLAND COURT NE, CEDAR RAPIDS, IOWA PH. (319) 294-9424

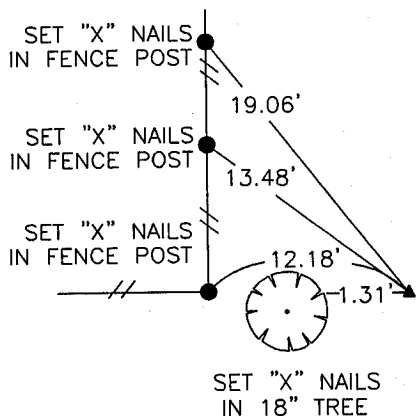
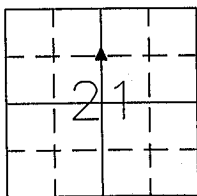
# UNITED STATES PUBLIC LAND SURVEY CORNER CERTIFICATE

LAND SURVEY MONUMENTS SITUATED IN SECTION 21, TOWNSHIP 84 NORTH RANGE 4 WEST OF THE 5TH P.M., JONES COUNTY, IOWA.

NO SCALE



SW CORNER  
NW 1/4 NE 1/4



SET "X" NAILS  
IN 18" TREE

1675 ✓

84421h-110204.tie

PREVIOUSLY RECORDED IN BOOK \_\_\_\_\_ PAGE \_\_\_\_\_

MONUMENT DESCRIPTION AND HOW ESTABLISHED \_\_\_\_\_

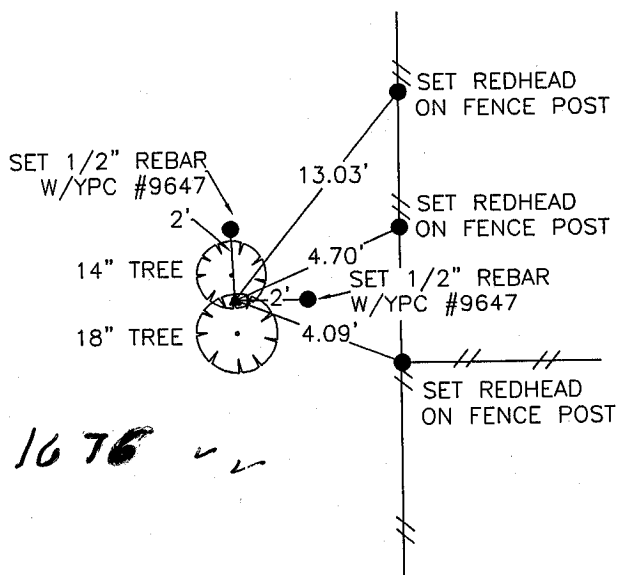
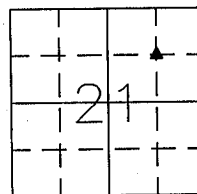
SET 1/2" REBAR W/YELLOW PLASTIC CAP #9647

AT MIDPOINT OF EAST LINE OF NW 1/4

NO SCALE



SE CORNER  
NW 1/4 NE 1/4



1676 ✓

84421i-110204.tie

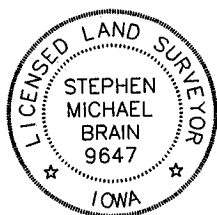
PREVIOUSLY RECORDED IN BOOK \_\_\_\_\_ PAGE \_\_\_\_\_

MONUMENT DESCRIPTION AND HOW ESTABLISHED \_\_\_\_\_

CORNER FELL IN TREE, SET 1/2" REBAR W/YELLOW PLASTIC

CAP #9647, 2.0' NORTH AND 2.0' EAST ON 1/4

1/4 SECTION LINES BY PROPORTION MEASUREMENT



I hereby certify that this land surveying document and the related survey work was performed by me or under my direct personal supervision and that I am a duly licensed Land Surveyor under the laws of the State of Iowa.  
Signed \_\_\_\_\_ Date 4/2/04

Stephen Michael Brain, L.S.  
My License Renewal Date Is December 31, 2004  
License Number 9647  
Pages or sheets covered by this seal: 1/1

- A.THERE IS NO CERTIFICATE FOR THE CORNER ON FILE WITH THE RECORDER OF THE COUNTY IN WHICH THE CORNER IS LOCATED
- B.THE SURVEYOR IN RESPONSIBLE CHARGE OF THE LAND SURVEYING ACCEPTS A CORNER POSITION WHICH DIFFERS FROM THAT SHOWN IN THE PUBLIC RECORDS OF THE COUNTY IN WHICH THE CORNER IS LOCATED.
- C.THE CORNER MONUMENT IS REPLACED OR MODIFIED IN ANY WAY.
- D.THE REFERENCE TIES REFERRED TO IN AN EXISTING PUBLIC RECORD ARE NOT CORRECT.

CORNER	SECTION	TOWNSHIP	RANGE
SW CORNER NW 1/4 NE 1/4	21	T84N	R4W
SE CORNER NW 1/4 NE 1/4	21	T84N	R4W

**BRAIN ENGINEERING, INC.**  
1540 MIDLAND COURT NE  
CEDAR RAPIDS, IOWA 52402  
(319) 294-9424

15MB  
4/1/04  
31474-10

R