

THIS IS NOT A CERTIFICATION

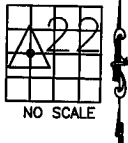
JONES COUNTY ENGINEER'S OFFICE, 19501 HWY. 64, ANAMOSA, IOWA, 52205 (319)462-3785

UNITED STATES PUBLIC LAND SURVEY CORNER CERTIFICATE

LAND SURVEY MONUMENTS SITUATED IN SECTION 22, TOWNSHIP 84
NORTH, RANGE 4 WEST OF THE 5TH P.M., JONES COUNTY, IOWA

CORNERS TO BE INDEXED

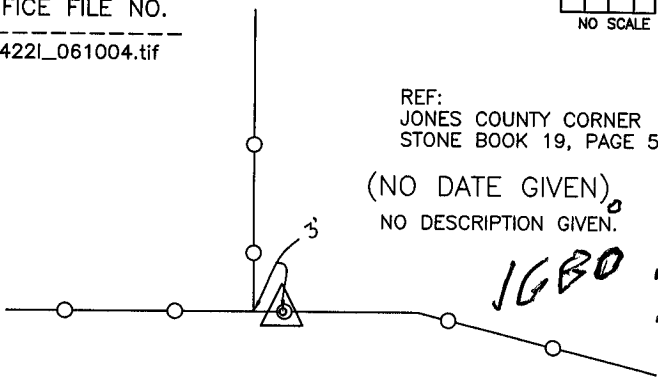
CORNER SECTION TOWNSHIP RANGE
SW, SE, NW, 22 84N 4W
OFFICE FILE NO.
84422l_061004.tif



REF:
JONES COUNTY CORNER
STONE BOOK 19, PAGE 55.

(NO DATE GIVEN)
NO DESCRIPTION GIVEN.

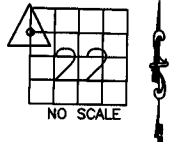
1680 ✓



PREVIOUSLY RECORDED IN BOOK _____, PAGE _____
MONUMENT DESCRIPTION AND HOW ESTABLISHED _____
APPARENT STONE IN FENCE LINE. SOUTHWEST CORNER, SOUTHEAST
QUARTER, NORTHWEST QUARTER, SECTION 22, TOWNSHIP 84 NORTH,
RANGE 4 WEST OF THE 5TH PRINCIPAL MERIDIAN, JONES COUNTY,
IOWA.

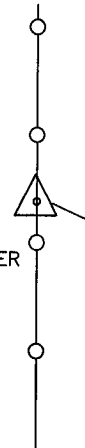
CORNERS TO BE INDEXED

CORNER SECTION TOWNSHIP RANGE
SW, NW, NW, 22 84N 4W
OFFICE FILE NO.
84422f_061004.tif



REF:
JONES COUNTY CORNER
STONE BOOK 19,
PAGE 55.
(NO DATE GIVEN)

1681 ✓

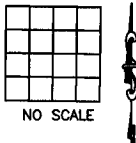


FD. STONE IN FENCE LINE
SW COR.-NW1/4-NW1/4
SEC. 22-84-4

PREVIOUSLY RECORDED IN BOOK _____, PAGE _____
MONUMENT DESCRIPTION AND HOW ESTABLISHED FOUND
STONE IN FENCE LINE. SOUTHWEST CORNER, NORTHWEST QUARTER,
NORTHWEST QUARTER, SECTION 22, TOWNSHIP 84 NORTH, RANGE
4 WEST OF THE 5TH PRINCIPAL MERIDIAN, JONES COUNTY, IOWA.

CORNERS TO BE INDEXED

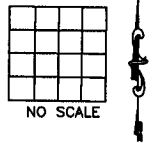
CORNER SECTION TOWNSHIP RANGE
OFFICE FILE NO.



PREVIOUSLY RECORDED IN BOOK _____, PAGE _____
MONUMENT DESCRIPTION AND HOW ESTABLISHED _____

CORNERS TO BE INDEXED

CORNER SECTION TOWNSHIP RANGE
OFFICE FILE NO.



PREVIOUSLY RECORDED IN BOOK _____, PAGE _____
MONUMENT DESCRIPTION AND HOW ESTABLISHED _____

~~I hereby declare that this plat, survey or report
was made by me or under my direct personal
supervision and that I am a duly registered Land
Surveyor under the laws of the State of Iowa.~~

Signed: _____

SEAL

JONES COUNTY
ENGINEER'S OFFICE

19501 HWY. 64,
ANAMOSA, IOWA,
52205 (319)462-3785

J