

# SECTION CORNER CERTIFICATE

OF  
 LAND SURVEY MONUMENTS SITUATED IN SECTION 22, TOWNSHIP 84 NORTH,  
 RANGE 4 WEST, OF THE FIFTH PRINCIPAL MERIDIAN, JONES, COUNTY, IOWA.

PREVIOUSLY RECORDED IN BOOK \_\_\_\_\_ AT PAGE \_\_\_\_\_.

FOR RECORDER'S USE

**REASON FOR PREPARING CERTIFICATE:**

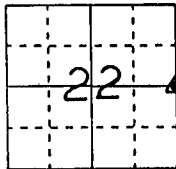
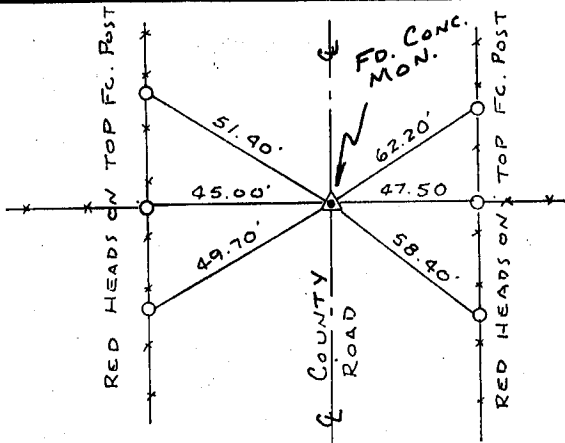
- A) THERE IS NO CERTIFICATE FOR THE CORNER ON FILE WITH THE RECORDER OF THE COUNTY IN WHICH THE CORNER IS LOCATED.
- B) CORNER POSITION DIFFERS FROM THAT SHOWN IN THE PUBLIC RECORDS OF THE COUNTY IN WHICH THE CORNER IS LOCATED.
- C) THE CORNER MONUMENT HAS BEEN REPLACED OR MODIFIED.
- D) THE REFERENCE TIES REFERRED TO IN AN EXISTING PUBLIC RECORD ARE INCORRECT.

**MONUMENT DESCRIPTION AND REMARKS :**

**E 1/4 CORNER SECTION 22-T84N-R4W FOUND CONC. MON.**  
**WITH 1/2" IRON PIN 3" DEEP ON E NORTH-SOUTH COUNTY ROAD**

## RECOVERY TIE DRAWING

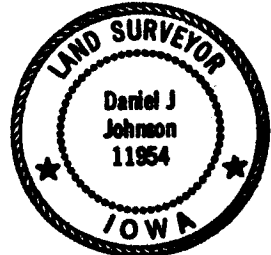
E 1/4 Cor. 22-84-4



NOT TO SCALE

ON CARD 5-29-92

I, DANIEL J. JOHNSON, CERTIFY THAT THE CORNER LOCATION(S) SHOWN ON THIS RECORD WERE DETERMINED BY ME OR UNDER MY DIRECTION AND CONTROL AND THAT THIS U.S. PUBLIC LAND SURVEY MONUMENT RECORD IS CORRECT AND COMPLETE TO THE BEST OF MY KNOWLEDGE AND BELIEF.



*Daniel J. Johnson* 5-29-92  
 DANIEL J. JOHNSON L.S. NO 11954 DATE

DZMOML ▲ GOVERNMENT CORNER ○ 5/8" TIE PIN SET — CENTERLINE - - - EXISTING FENCE LINE - - - R.O.W. LINE	SHEET TITLE: U.S. PUBLIC LAND SURVEY RECORD	H H H	HALL AND HALL ENGINEERS, INC. 226 29TH STREET DRIVE S.E. CEDAR RAPIDS, IOWA 52403 319-362-9548	
	PROJECT TITLE: JONES COUNTY PROJECT		SCALE: NONE	FNO: OT 23
DW: R.W.B.	KIC: D.J.J.	APP:	DATE: 2-21-92	

844220-052992