

UNITED STATES PUBLIC LAND SURVEY CORNER CERTIFICATE

OF

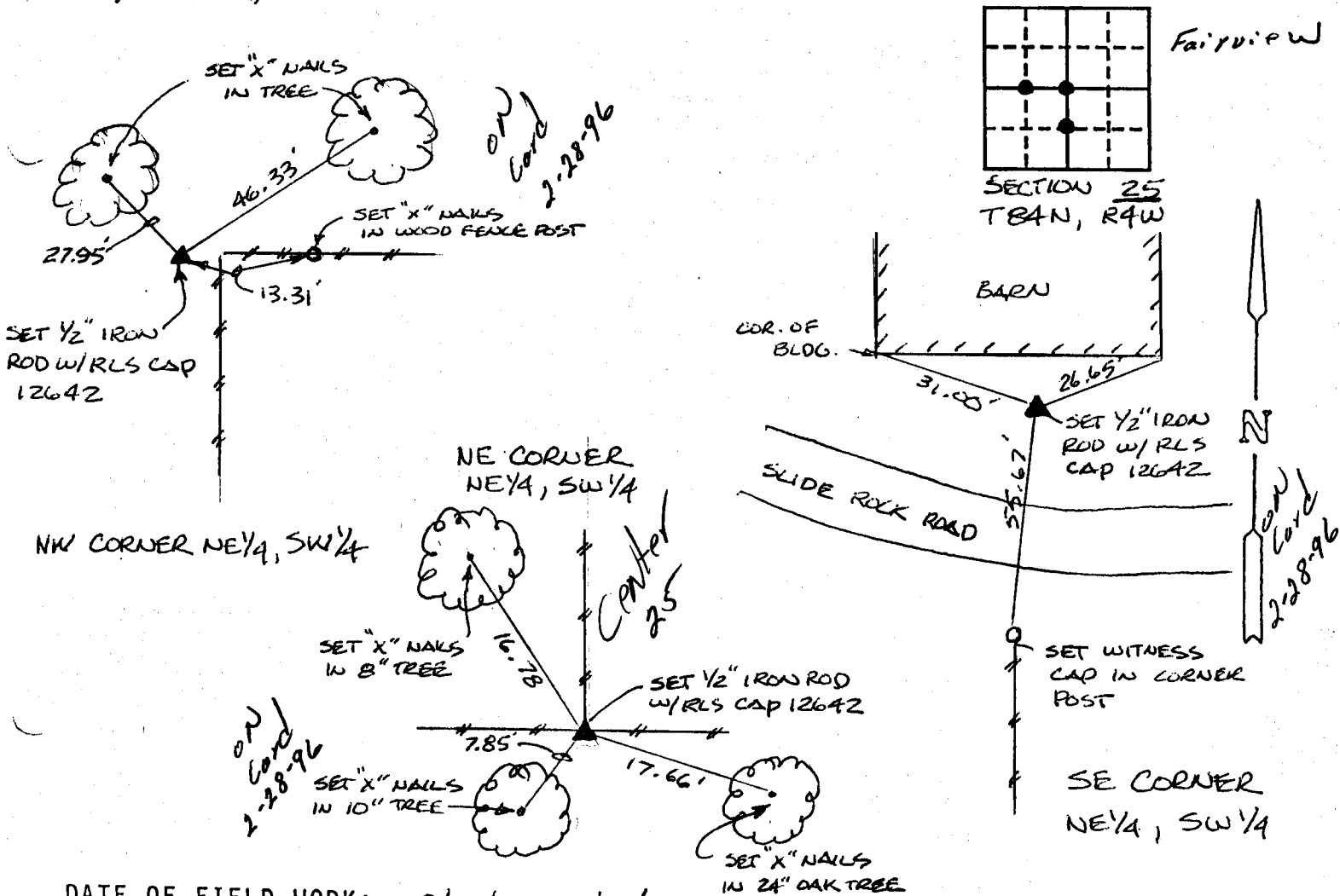
Land Survey Monuments situated in Section TWENTY-FIVE (25), Township 84 NORTH, Range 4 WEST, of the Fifth Principal Meridian, JONES County, Iowa. Previously recorded in _____ in County Recorder's Office. (book, page, document number, etc.)

(Show reason for preparing this certificate, the evidence and detailed procedures used in establishing the corner positions and monumentation found or placed.)

Monument Description and Remarks: NO CERTIFICATE PREVIOUSLY RECORDED. SET 1/2" IRON ROD W/RLS CAP 12642 @ FOLLOWING. NW CORNER - RESET CORNER FROM PREVIOUS PLAT OF GERDES 1ST ADDITION BOOK 6, PAGE 118. NE CORNER - INTERSECTED OPPOSITE 1/4 CORNERS & ADJUSTED SOUTH TO CORNER POST. SE CORNER - SET ON LINE & MID-WAY BETWEEN S 1/4 CORNER & CENTER OF SECTION.

PLAN - VIEW

(Show a minimum of three reference ties to durable physical objects, relevant monuments and physical conditions that will enable recovery of the corner.)



DATE OF FIELD WORK: 3/13/95, 4/15/95, 6/13/95

I hereby certify that the survey work was completed and this certificate was prepared by me or under my direct personal supervision and that I am a duly registered land surveyor under the laws of the state of Iowa.

Signature: William H. Burger
Name typed or printed: WILLIAM H. BURGER
Date: 6/15/95 Reg. No. 12642

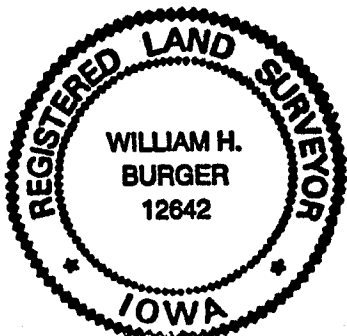
Corners	List Corners to be Indexed Section	Twp	Range
NW-NE 1/4, SW 1/4	25	T84N	R4W
NE-NE 1/4, SW 1/4	25	T84N	R4W
SE-NE 1/4, SW 1/4	25	T84N	R4W

3554

FILED
RECORDERS OFFICE
JONES COUNTY IOWA

95 JUN 19 AM 9:43

BOOK 380 PAGE 65
LINDA J. BENDIXEN
RECORDER 6.00



SEAL