

2003 FILED 1060

RECORDERS OFFICE
JONES COUNTY IOWA

03 MAR 13 PM 1:04

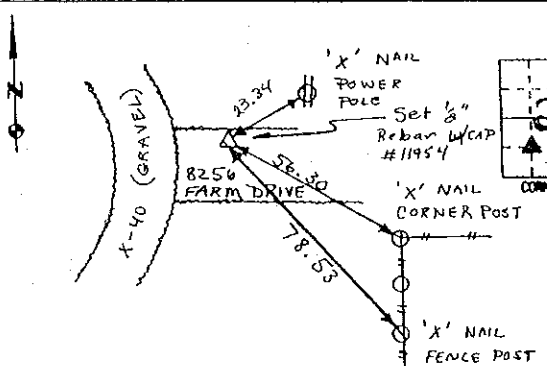
MARIE KRUTZFIELD
RECORDER 6.00 Pd

PREPARED BY HALL & HALL ENGINEERS, INC. 209 29TH STREET N.E. CEDAR RAPIDS, IOWA 52402 (319) 362-9548

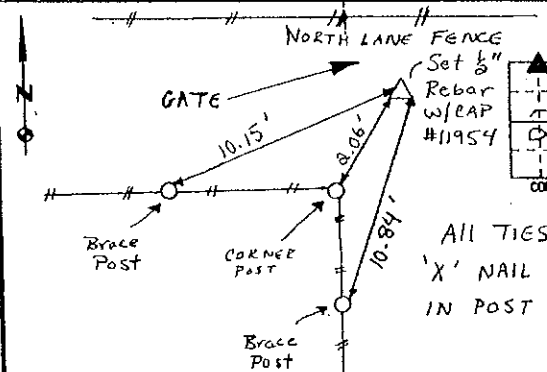
LAND SURVEY MONUMENTS SITUATED IN SECTION 25, TOWNSHIP 84 NORTH,
RANGE 4 WEST, OF THE FIFTH PRINCIPAL MERIDIAN, JONES COUNTY IOWA.

RECOVERY TIE DRAWING

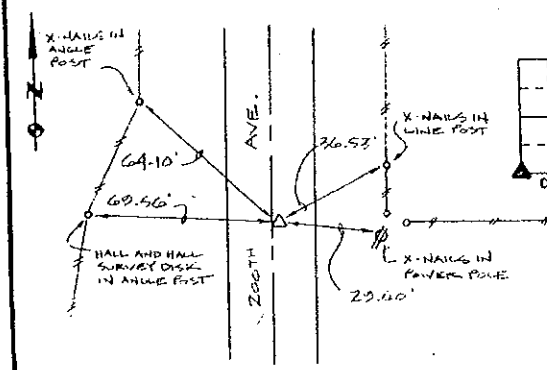
MONUMENT DESCRIPTION AND REMARKS:



N.W. Cor. - SE 1/4 - SW 1/4 Sec. 25-84-4
 REASON FOR PREPARING CERTIFICATE: (A) B, C OR D
 PREVIOUS BOOK _____ PAGE _____
 Set 1/2" Rebar w/ RED L.S. CAP
 #11954 N. Edge of Driveway.



N.E. Corner - NW 1/4 - NW 1/4 Sec. 25-84-4
 REASON FOR PREPARING CERTIFICATE: (A) B, C OR D
 PREVIOUS BOOK _____ PAGE _____
 Set 1/2" Rebar w/ RED L.S. CAP
 #11954
 2' N & 0.5' E of Corner
 POST.



S.W. CORNER, SECTION 25, T84N1, R4W
 REASON FOR PREPARING CERTIFICATE: (A) B, C OR D
 PREVIOUS BOOK _____ PAGE _____
 Fd. S.C.M. 6" DEEP 2' EAST OF
 & 200TH AVE.



I hereby certify that this land surveying document was prepared and the related survey work was performed by me or under my direct personal supervision and that I am a duly Licensed Land Surveyor under the laws of the State of Iowa.
 Signed: *Daniel J. Johnson* Date: 3-4-03
 Daniel J. Johnson, 11954
 My license expires on December 31, 2004
 Pages or sheets covered by this seal: 1
 (Entire submission unless specified here)

- REASON FOR PREPARING CERTIFICATE:
- A) THERE IS NO CERTIFICATE FOR THE CORNER ON FILE WITH THE RECORDER OF THE COUNTY IN WHICH THE CORNER IS LOCATED.
 - B) CORNER POSITION DIFFERS FROM THAT SHOWN IN THE PUBLIC RECORDS OF THE COUNTY IN WHICH THE CORNER IS LOCATED.
 - C) THE CORNER MONUMENT HAS BEEN REPLACED OR MODIFIED.
 - D) THE REFERENCE TIES REFERRED TO IN AN EXISTING PUBLIC RECORD ARE INCORRECT OR MISSING

SHEET NO. 1
 PROJECT NAME: U.S. PUBLIC LAND SURVEY CORNER CERTIFICATE

HALL AND HALL ENGINEERS, INC.
 209 29TH STREET N.E.
 CEDAR RAPIDS, IOWA 52402
 (319) 362-9548

PROJECT NAME: Jones County (Morley)

SCALE: NONE
 COUNTY: County 3
 P. NO.: 6125

DATE: 5/5/00

