

2003 1055

FILED
RECORDERS OFFICE
JONES COUNTY IOWA

03 MAR 13 PM 12:57

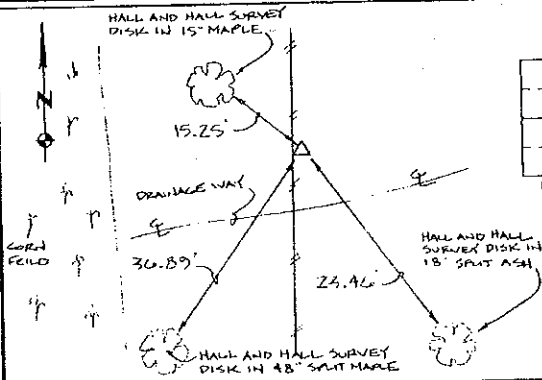
MARIE KRUTZFIELD
RECORDER 6.00 Pd

PREPARED BY HALL & HALL ENGINEERS, INC. 209 29TH STREET N.E. CEDAR RAPIDS, IOWA 52402 (319) 362-9548

LAND SURVEY MONUMENTS SITUATED IN SECTION 24, TOWNSHIP 84 NORTH,
RANGE 4 WEST, OF THE FIFTH PRINCIPAL MERIDIAN, JONES COUNTY IOWA.

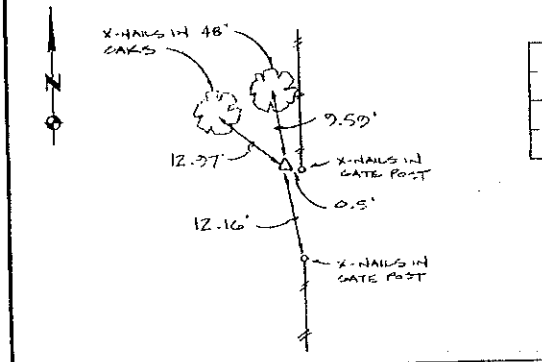
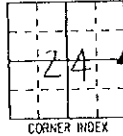
RECOVERY TIE DRAWING

MONUMENT DESCRIPTION AND REMARKS:



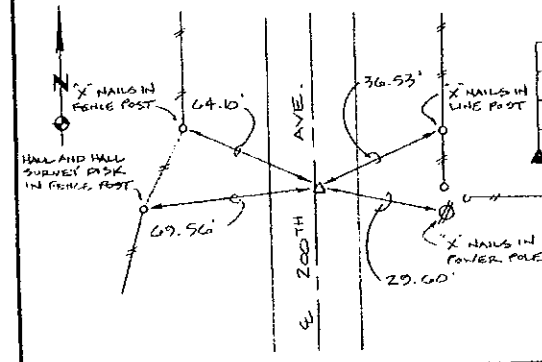
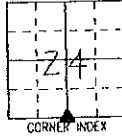
E. 1/4 CORNER, SECTION 24, T84N, R4W

REASON FOR PREPARING CERTIFICATE: (A) B, C OR D
PREVIOUS BOOK _____, PAGE _____
SET 1/2" REBAR WITH L.S. CAP # 11954
3' EAST OF NORTH-SOUTH FENCE 2" ABOVE SURFACE.



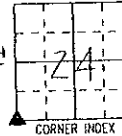
S. 1/4 CORNER, SECTION 24, T84N, R4W

REASON FOR PREPARING CERTIFICATE: (A) B, C OR D
PREVIOUS BOOK _____, PAGE _____
FD. S.C.M. 1 1/2' ABOVE GROUND



S.W. CORNER, SECTION 24, T84N, R4W

REASON FOR PREPARING CERTIFICATE: (A) B, C OR D
PREVIOUS BOOK _____, PAGE _____
FD. S.C.M. 2' EAST OF W 200TH AVE.
6" BELOW SURFACE



I hereby certify that this land surveying document was prepared and the related survey work was performed by me or under my direct personal supervision and that I am a duly licensed Land Surveyor under the laws of the State of Iowa.

Signed: *Daniel J. Johnson* Date: 2-27-03
Daniel J. Johnson, L.S. 11954
My license renewal date is December 31, 2004

Pages or sheets covered by this seal: (Entire submission unless specified here) 1

REASON FOR PREPARING CERTIFICATE:

- A) THERE IS NO CERTIFICATE FOR THE CORNER ON FILE WITH THE RECORDER OF THE COUNTY IN WHICH THE CORNER IS LOCATED.
- B) CORNER POSITION DIFFERS FROM THAT SHOWN IN THE PUBLIC RECORDS OF THE COUNTY IN WHICH THE CORNER IS LOCATED.
- C) THE CORNER MONUMENT HAS BEEN REPLACED OR MODIFIED.
- D) THE REFERENCE TIES REFERRED TO IN AN EXISTING PUBLIC RECORD ARE INCORRECT OR MISSING.

Sheet Title: U.S. PUBLIC LAND SURVEY CORNER CERTIFICATE

Project Title: JONES COUNTY X-40

Drawn by: DJK

Checked by: DJJ

Approved by: DJJ

Field Book No: 2004-1-2

Scale: 1/4" = 1'

Date: 4/20/02

Project No: 6125



HALL AND HALL ENGINEERS, INC.
209 29TH STREET N.E.
CEDAR RAPIDS, IOWA 52402
(319) 362-9548

2002 3011
FILED
RECORDERS OFFICE
JONES COUNTY IOWA

844240-081602
844250-081602
844260-081602

02 AUG 16 PM 12:37

MARIE KRUTZFIELD
RECORDER 6.00pd

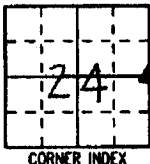
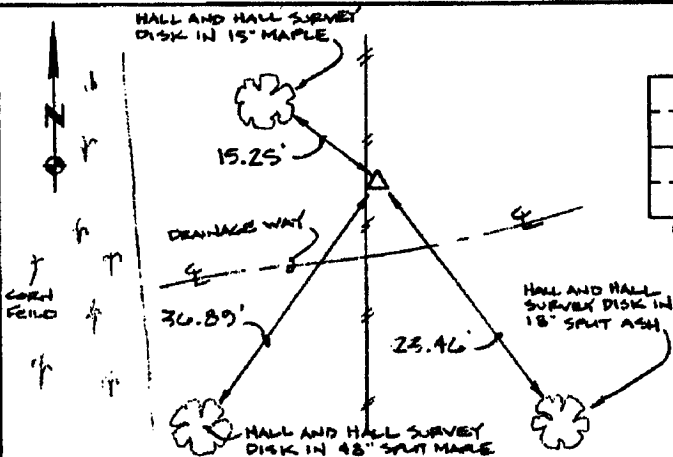
PREPARED BY HALL & HALL ENGINEERS, INC. 209 29TH STREET N.E. CEDAR RAPIDS, IOWA 52402 (319) 362-9548

LAND SURVEY MONUMENTS SITUATED IN SECTION 24, TOWNSHIP 24 NORTH,
RANGE 4 WEST, OF THE FIFTH PRINCIPAL MERIDIAN, JONES COUNTY IOWA.

RECOVERY TIE DRAWING

MONUMENT DESCRIPTION AND REMARKS:

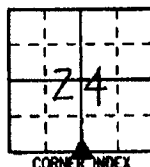
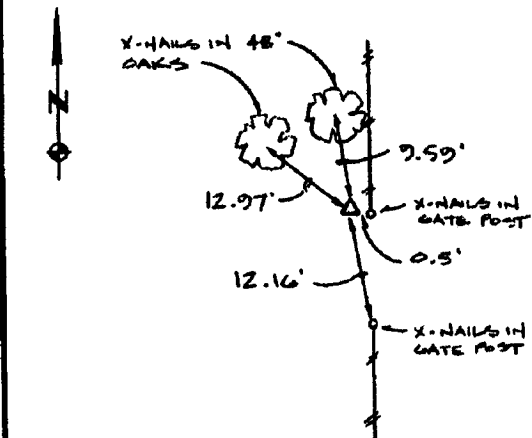
E. 1/4 CORNER, SECTION 24, T84N, R4W



REASON FOR PREPARING CERTIFICATE: (A) B, C OR D
PREVIOUS BOOK _____, PAGE _____

SET 1/2" REBAR WITH L.S. CAP # 11954
3' EAST OF NORTH-SOUTH FENCE 2" ABOVE
SURFACE

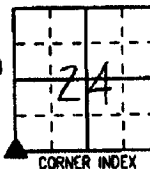
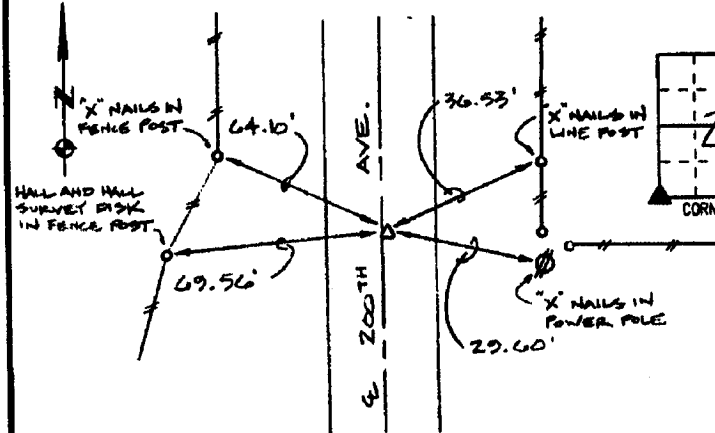
S. 1/4 CORNER, SECTION 24, T84N, R4W



REASON FOR PREPARING CERTIFICATE: (A) B, C OR D
PREVIOUS BOOK _____, PAGE _____

FD. S.C.M. 1 1/2' ABOVE GROUND

S.W. CORNER, SECTION 24, T84N, R4W



REASON FOR PREPARING CERTIFICATE: (A) B, C OR D
PREVIOUS BOOK _____, PAGE _____

FD. S.C.M. 2' EAST OF E 200TH AVE.
6" BELOW SURFACE

I hereby certify that this land surveying document was prepared and the related survey work was performed by me or under my direct personal supervision and that I am a duly licensed Land Surveyor under the laws of the State of Iowa.

Signed: Daniel J. Johnson Date: 8/16/02
Daniel J. Johnson, L.S. 11954
My license renewal date is December 31, 2002

Pages or sheets covered by this seal: 12/1
(Entire submission unless specified here)

REASON FOR PREPARING CERTIFICATE:

- A) THERE IS NO CERTIFICATE FOR THE CORNER ON FILE WITH THE RECORDER OF THE COUNTY IN WHICH THE CORNER IS LOCATED.
- B) CORNER POSITION DIFFERS FROM THAT SHOWN IN THE PUBLIC RECORDS OF THE COUNTY IN WHICH THE CORNER IS LOCATED.
- C) THE CORNER MONUMENT HAS BEEN REPLACED OR MODIFIED.
- D) THE REFERENCE TIES REFERRED TO IN AN EXISTING PUBLIC RECORD ARE INCORRECT OR MISSING.



Sheet Title: U.S. PUBLIC LAND SURVEY CORNER CERTIFICATE

Project Title: JONES COUNTY X-40

Drawn by: DLK

Checked by: DJJ

Approved by: DJJ

Field Book No: COUNTY 3

Scale: N/A

Date: 4/26/02

Project No: 6125



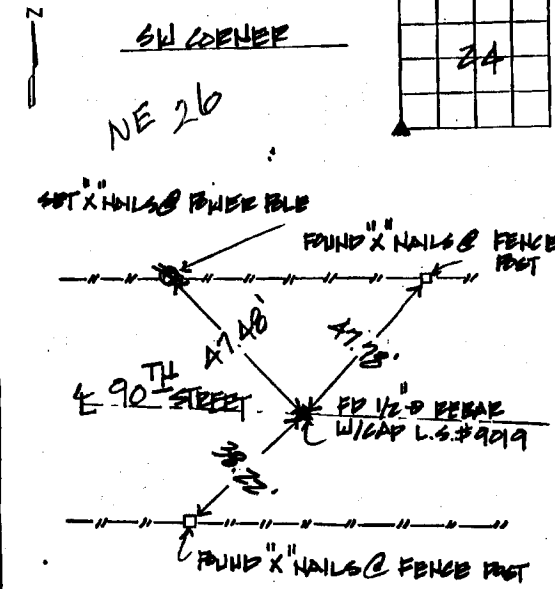
HALL AND HALL ENGINEERS, INC.
209 29TH STREET N.E.
CEDAR RAPIDS, IOWA 52402
(319) 362-9548

UNITED STATES PUBLIC LAND
 SURVEY CORNER CERTIFICATE

SEP 18 PM 1:04
 CLARENCE J. WALTON
 RECORDER 6.00 Pd

LAND SURVEY MONUMENTS SITUATED IN SECTION 24, TOWNSHIP 84 NORTH
 RANGE 4 WEST OF THE 5TH P.M., JONES COUNTY, IOWA.

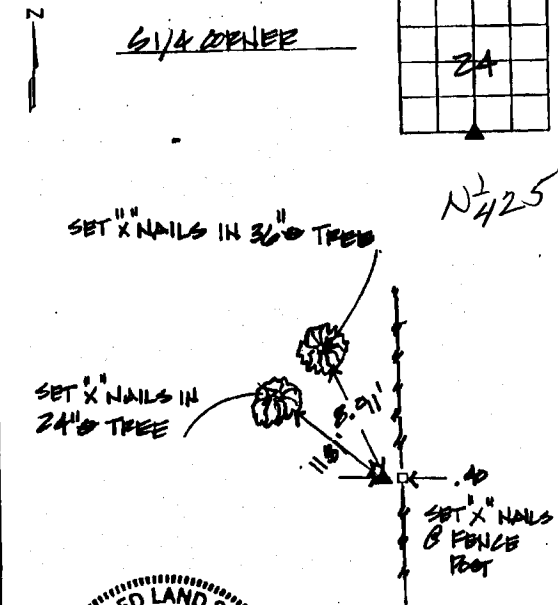
NO SCALE



or cond

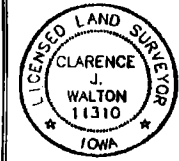
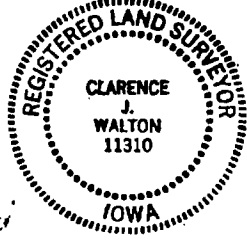
PREVIOUSLY RECORDED IN BOOK _____ PAGE _____
 MONUMENT DESCRIPTION AND HOW ESTABLISHED SW CORNER
OF SEC. 24 TWP. 84N - R4W - 5TH, FOUND 1/2
RD BEHAR W/CAP L.S.# 9019

NO SCALE



or cond

PREVIOUSLY RECORDED IN BOOK _____ PAGE _____
 MONUMENT DESCRIPTION AND HOW ESTABLISHED S1/4
CORNER OF SEC. 24 TWP. 84N - R4W - 5TH
FOUND SECTION CORNER MONUMENT.



I hereby certify that this land surveying document and the related survey work was performed by me or under my direct personal supervision and that I am a duly licensed Land Surveyor under the laws of the State of Iowa.
 Signed Clarence J. Walton Date 9/4/97
 Clarence J. Walton, L.S.
 My License Renewal Date is December 31, 1997
 License Number 11310
 Pages or sheets covered by this seal: 1 of 1

CORNERS TO BE INDEXED

CORNER	SECTION	TOWNSHIP	RANGE
<u>SW</u>	<u>24</u>	<u>84N</u>	<u>4W</u>
<u>S1/4</u>	<u>24</u>	<u>84N</u>	<u>4W</u>

BRAIN ENGINEERING, INC.
 777 10TH STREET
 MARION, IOWA 52302
 (319) 378-1318