

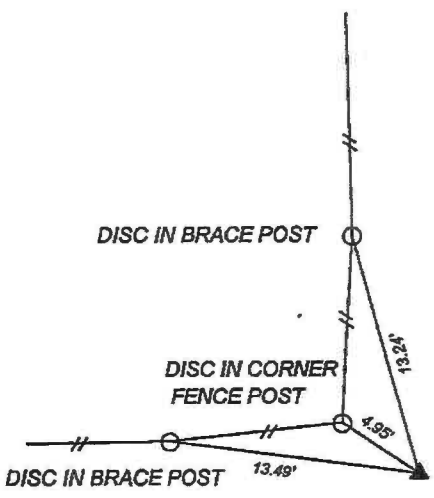
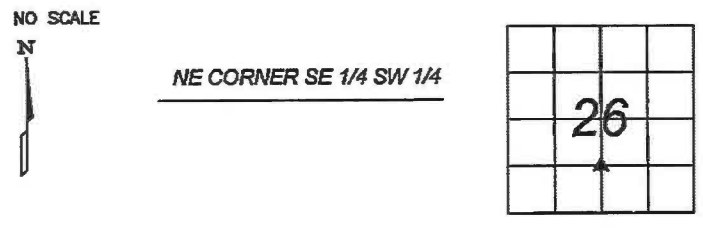
Instrument #: 2024-0033
 01/05/2024 09:22:44 AM Total Pages: 1
 ZSC SECTION CORNER CERTIFICATE
 Recording Fee: -\$7.00 Transfer Tax: \$0
 Sheri L. Jones, Recorder, Jones County Iowa



PREPARED BY
 KEVIN F. BRADSHAW, BRAIN ENGINEERING, INC., 1540 MIDLAND COURT NE, CEDAR RAPIDS, IOWA PH. (319) 294-9424

UNITED STATES PUBLIC LAND SURVEY CORNER CERTIFICATE

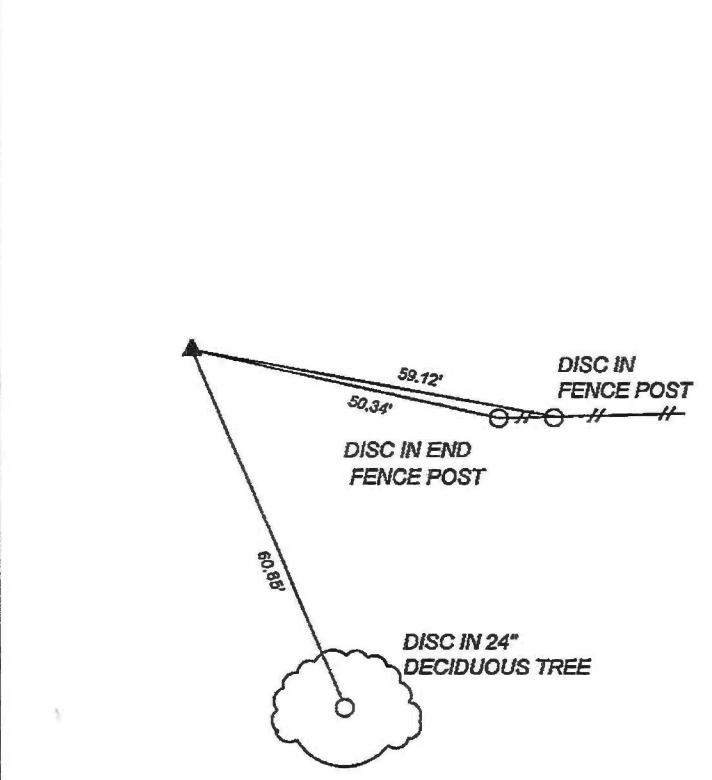
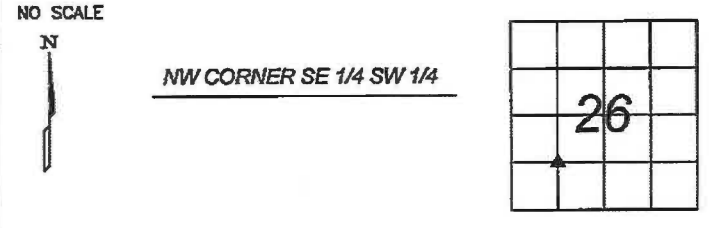
LAND SURVEY MONUMENTS SITUATED IN SECTION 26, TOWNSHIP 84 NORTH
 RANGE 4 WEST OF THE 5TH P.M., JONES COUNTY, IOWA.



PREVIOUSLY RECORDED IN BOOK _____ PAGE _____

MONUMENT DESCRIPTION AND HOW ESTABLISHED _____

SET 1/2" REBAR W/ YELLOW PLASTIC CAP #17543 AT MIDPOINT OF LINE BETWEEN CENTER OF SECTION AND S 1/4 CORNER. CENTER OF SECTION WAS CALCULATED AS INTERSECTION OF ALL 4 1/4 CORNERS OF SECTION 26.



PREVIOUSLY RECORDED IN BOOK _____ PAGE _____

MONUMENT DESCRIPTION AND HOW ESTABLISHED _____

SET 1/2" REBAR W/ YELLOW PLASTIC CAP #17543 AT INTERSECTION OF THE 4 MIDPOINTS OF THE NORTH, SOUTH, EAST AND WEST LINES OF THE SW 1/4. CENTER OF SECTION 26 WAS CALCULATED AS INTERSECTION OF ALL 4 1/4 CORNERS OF SECTION 26. ALL 4 1/4 CORNERS OF SECTION 26 ARE SET AND TIES RECORDED.



I hereby certify that this land surveying document and the related survey work was performed by me or under my direct personal supervision and that I am a duly licensed Land Surveyor under the laws of the State of Iowa.

Signed *[Signature]* Date 12-28-23

Kevin F. Bradshaw, L.S.
 My License Renewal Date is December 31, 2024
 License Number 17543
 Pages or sheets covered by this seat: 1/1

- A. THERE IS NO CERTIFICATE FOR THE CORNER ON FILE WITH THE RECORDER OF THE COUNTY IN WHICH THE CORNER IS LOCATED
- B. THE SURVEYOR IN RESPONSIBLE CHARGE OF THE LAND SURVEYING ACCEPTS A CORNER POSITION WHICH DIFFERS FROM THAT SHOWN IN THE PUBLIC RECORDS OF THE COUNTY IN WHICH THE CORNER IS LOCATED.
- C. THE CORNER MONUMENT IS REPLACED OR MODIFIED IN ANY WAY.
- D. THE REFERENCE TIES REFERRED TO IN AN EXISTING PUBLIC RECORD ARE NOT CORRECT.

CORNERS TO BE INDEXED			
CORNER	SECTION	TOWNSHIP	RANGE
NE CORNER	26	T84 N	R4W
SE 1/4 SW 1/4			
NW CORNER	26	T84 N	R4W
SE 1/4 SW 1/4			

BRAIN ENGINEERING, INC.
 1540 MIDLAND COURT NE
 CEDAR RAPIDS, IOWA 52402
 (319) 294-9424
 284923-65