

2003 1055

FILED
RECORDERS OFFICE
JONES COUNTY IOWA

03 MAR 13 PM 12:57

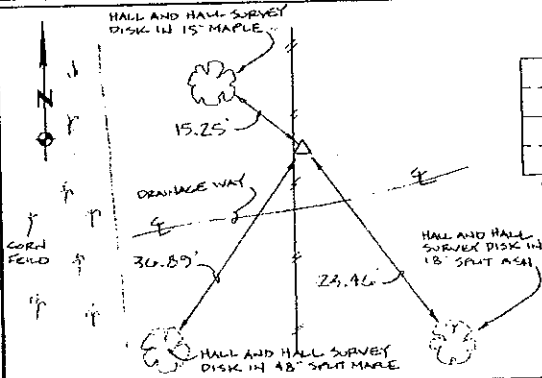
MARIE KRUTZFIELD
RECORDER 6.00 Pd

PREPARED BY HALL & HALL ENGINEERS, INC. 209 29TH STREET N.E. CEDAR RAPIDS, IOWA 52402 (319) 362-9548

LAND SURVEY MONUMENTS SITUATED IN SECTION 24, TOWNSHIP 84 NORTH,
RANGE 4 WEST, OF THE FIFTH PRINCIPAL MERIDIAN, JONES COUNTY IOWA.

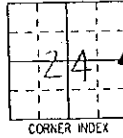
RECOVERY TIE DRAWING

MONUMENT DESCRIPTION AND REMARKS:

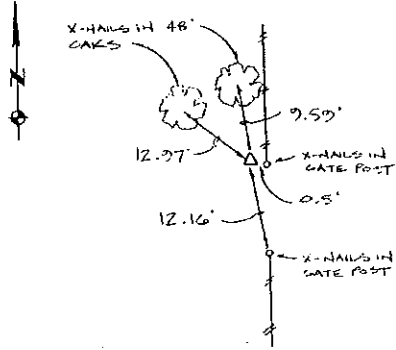


E. 1/4 CORNER, SECTION 24, T84N, R4W

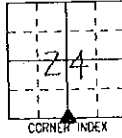
REASON FOR PREPARING CERTIFICATE: A, B, C OR D
 PREVIOUS BOOK _____, PAGE _____
 SET 1/2" REBAR WITH L.S. CAP # 11954
 3' EAST OF NORTH-SOUTH FENCE 2" ABOVE
 SURFACE.



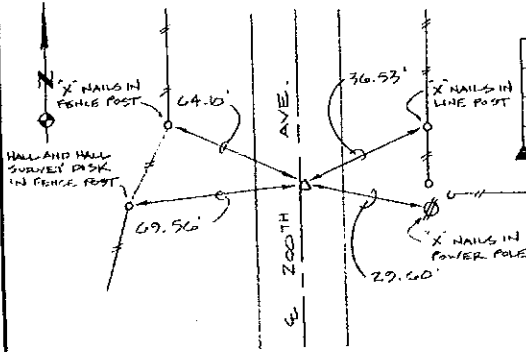
S. 1/4 CORNER, SECTION 24, T84N, R4W



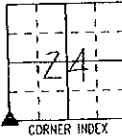
REASON FOR PREPARING CERTIFICATE: A, B, C OR D
 PREVIOUS BOOK _____, PAGE _____
 FD. S.C.M. 1 1/2' ABOVE GROUND



S.W. CORNER, SECTION 24, T84N, R4W



REASON FOR PREPARING CERTIFICATE: A, B, C OR D
 PREVIOUS BOOK _____, PAGE _____
 FD. S.C.M. 2' EAST OF 'E' 200TH AVE.
 0" BELOW SURFACE



I hereby certify that this land surveying document was prepared and the related survey work was performed by me or under my direct personal supervision and that I am a duly licensed Land Surveyor under the laws of the State of Iowa.

Signed: Daniel J. Johnson Date: 2-27-03

Daniel J. Johnson, L.S. 11954
 My license renewal date is December 31, 2004

Pages or sheets covered by this seal:
 (Entire submission unless specified here) 1

REASON FOR PREPARING CERTIFICATE:

- A) THERE IS NO CERTIFICATE FOR THE CORNER ON FILE WITH THE RECORDER OF THE COUNTY IN WHICH THE CORNER IS LOCATED.
- B) CORNER POSITION DIFFERS FROM THAT SHOWN IN THE PUBLIC RECORDS OF THE COUNTY IN WHICH THE CORNER IS LOCATED.
- C) THE CORNER MONUMENT HAS BEEN REPLACED OR MODIFIED.
- D) THE REFERENCE TIES REFERRED TO IN AN EXISTING PUBLIC RECORD ARE INCORRECT OR MISSING.

Sheet Title: U.S. PUBLIC LAND SURVEY CORNER CERTIFICATE

Project Title: JONES COUNTY X-40

Drawn by: DJK

Checked by: DJS

Approved by: DJS

Final Book No: 2003: 3

Scale: 11A

Date: 4/20/02

Project No: 6125



HALL AND HALL ENGINEERS, INC.
 209 29TH STREET N.E.
 CEDAR RAPIDS, IOWA 52402
 (319) 362-9548

2002 3011
FILED
RECORDERS OFFICE
JONES COUNTY IOWA

844240-081602
844250-081602
844260-081602

02 AUG 16 PM 12:37

MARIE KRUTZFIELD
RECORDER 6.00pd

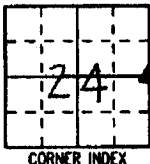
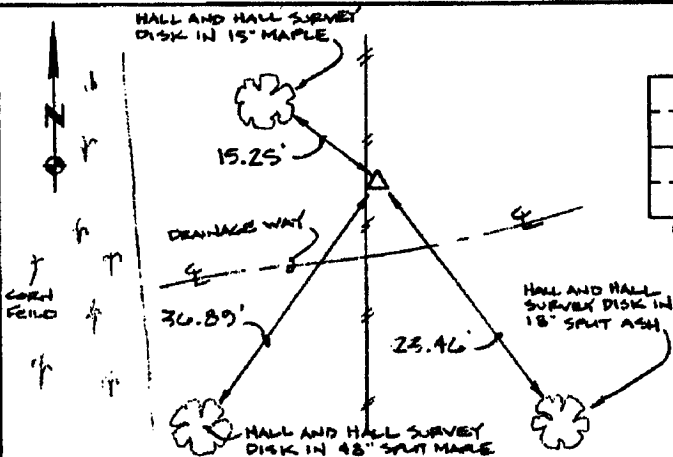
PREPARED BY HALL & HALL ENGINEERS, INC. 209 29TH STREET N.E. CEDAR RAPIDS, IOWA 52402 (319) 362-9548

LAND SURVEY MONUMENTS SITUATED IN SECTION 24, TOWNSHIP 24 NORTH,
RANGE 4 WEST, OF THE FIFTH PRINCIPAL MERIDIAN, JONES COUNTY IOWA.

RECOVERY TIE DRAWING

MONUMENT DESCRIPTION AND REMARKS:

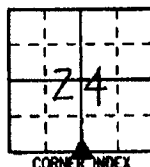
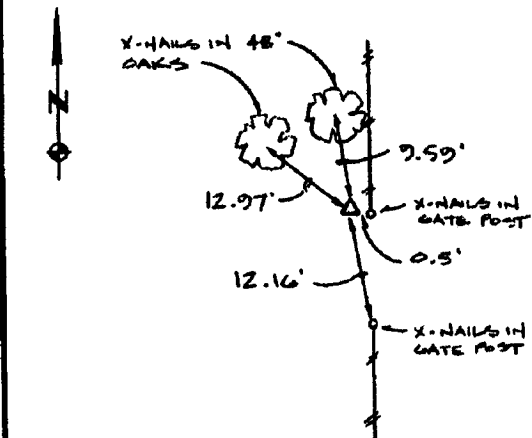
E. 1/4 CORNER, SECTION 24, T84N, R4W



REASON FOR PREPARING CERTIFICATE: (A) B, C OR D
PREVIOUS BOOK _____, PAGE _____

SET 1/2" REBAR WITH L.S. CAP # 11954
3' EAST OF NORTH-SOUTH FENCE 2" ABOVE
SURFACE

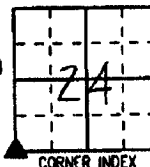
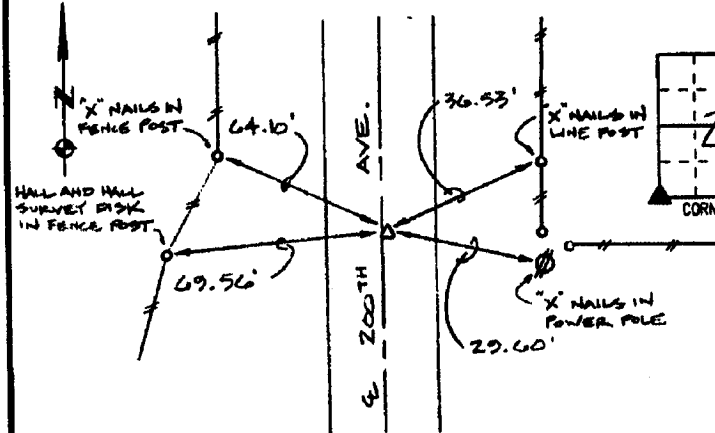
S. 1/4 CORNER, SECTION 24, T84N, R4W



REASON FOR PREPARING CERTIFICATE: (A) B, C OR D
PREVIOUS BOOK _____, PAGE _____

FD. S.C.M. 1/2' ABOVE GROUND

S.W. CORNER, SECTION 24, T84N, R4W



REASON FOR PREPARING CERTIFICATE: (A) B, C OR D
PREVIOUS BOOK _____, PAGE _____

FD. S.C.M. 2' EAST OF E 200TH AVE.
6" BELOW SURFACE



I hereby certify that this land surveying document was prepared and the related survey work was performed by me or under my direct personal supervision and that I am a duly licensed Land Surveyor under the laws of the State of Iowa.

Signed: Daniel J. Johnson 8/16/02 Date:
Daniel J. Johnson, L.S. 11954
My license renewal date is December 31, 2002

Pages or sheets covered by this seal:
(Entire submission unless specified here) 12/1

REASON FOR PREPARING CERTIFICATE:

- A) THERE IS NO CERTIFICATE FOR THE CORNER ON FILE WITH THE RECORDER OF THE COUNTY IN WHICH THE CORNER IS LOCATED.
- B) CORNER POSITION DIFFERS FROM THAT SHOWN IN THE PUBLIC RECORDS OF THE COUNTY IN WHICH THE CORNER IS LOCATED.
- C) THE CORNER MONUMENT HAS BEEN REPLACED OR MODIFIED.
- D) THE REFERENCE TIES REFERRED TO IN AN EXISTING PUBLIC RECORD ARE INCORRECT OR MISSING.

Sheet Title: U.S. PUBLIC LAND SURVEY CORNER CERTIFICATE

Project Title: JONES COUNTY X-40



HALL AND HALL ENGINEERS, INC.
209 29TH STREET N.E.
CEDAR RAPIDS, IOWA 52402
(319) 362-9548

Drawn by: DLK

Checked by: DJJ

Approved by: DJJ

Field Book No: COUNTY 3

Scale: N/A

Date: 4/26/02

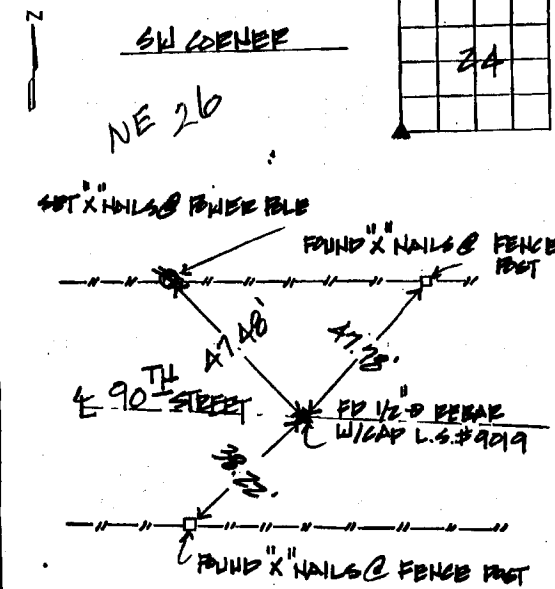
Project No: 6125

UNITED STATES PUBLIC LAND
 SURVEY CORNER CERTIFICATE

SEP 18 PM 1:04
 CLARENCE J. WALTON
 RECORDER 6.00 Pd

LAND SURVEY MONUMENTS SITUATED IN SECTION 24, TOWNSHIP 84 NORTH
 RANGE 4 WEST OF THE 5TH P.M., JONES COUNTY, IOWA.

NO SCALE

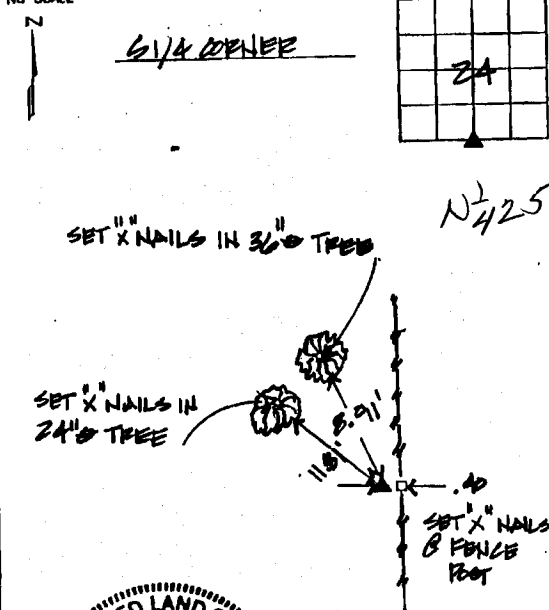


or cond

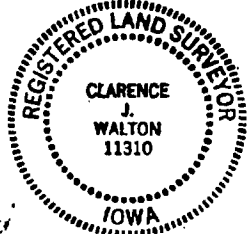
PREVIOUSLY RECORDED IN BOOK _____ PAGE _____

MONUMENT DESCRIPTION AND HOW ESTABLISHED SW CORNER
OF SEC. 24 TWP. 84N - R4W - 5TH, FOUND 1/2
RD BEHAR W/ CAP L.S.# 9019

NO SCALE

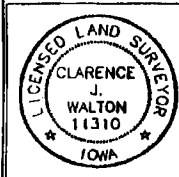


ON cond



PREVIOUSLY RECORDED IN BOOK _____ PAGE _____

MONUMENT DESCRIPTION AND HOW ESTABLISHED S1/4
CORNER OF SEC. 24 TWP. 84N - R4W - 5TH
FOUND SECTION CORNER MONUMENT.



I hereby certify that this land surveying document and the related survey work was performed by me or under my direct personal supervision and that I am a duly licensed Land Surveyor under the laws of the State of Iowa.
 Signed Clarence J. Walton Date 9/4/97
 Clarence J. Walton, L.S.
 My License Renewal Date is December 31, 1997
 License Number 11310
 Pages or sheets covered by this seal: 1 of 1

CORNERS TO BE INDEXED

CORNER	SECTION	TOWNSHIP	RANGE
<u>SW</u>	<u>24</u>	<u>84N</u>	<u>4W</u>
<u>S1/4</u>	<u>24</u>	<u>84N</u>	<u>4W</u>

BRAIN ENGINEERING, INC.
 777 10TH STREET
 MARION, IOWA 52302
 (319) 378-1318

UNITED STATES PUBLIC LAND SURVEY CORNER CERTIFICATE OF

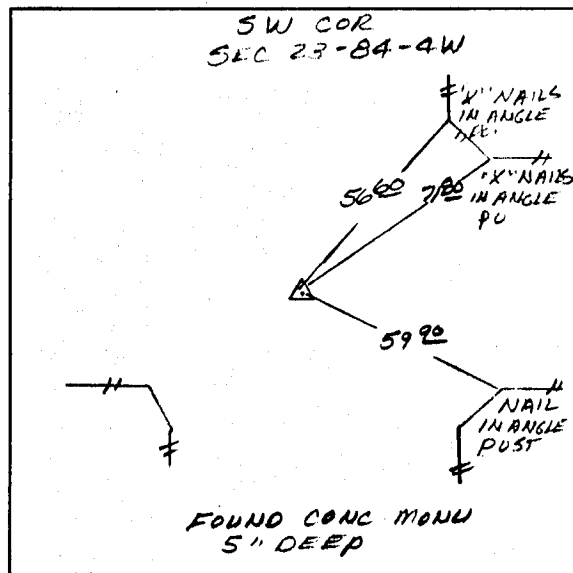
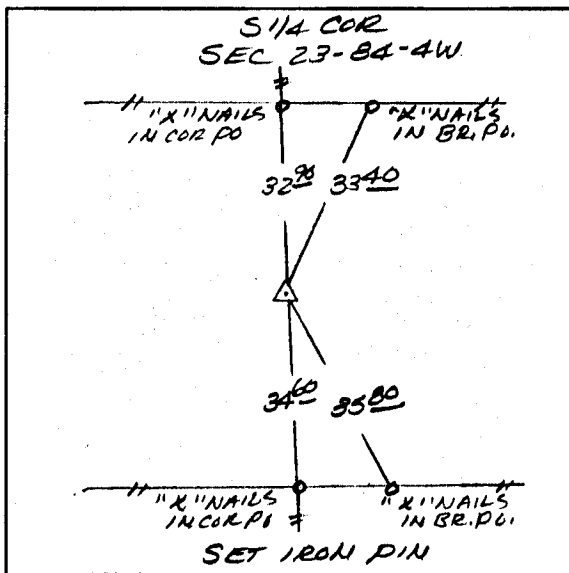
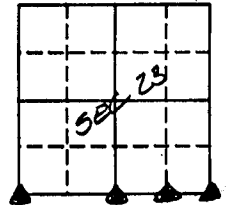
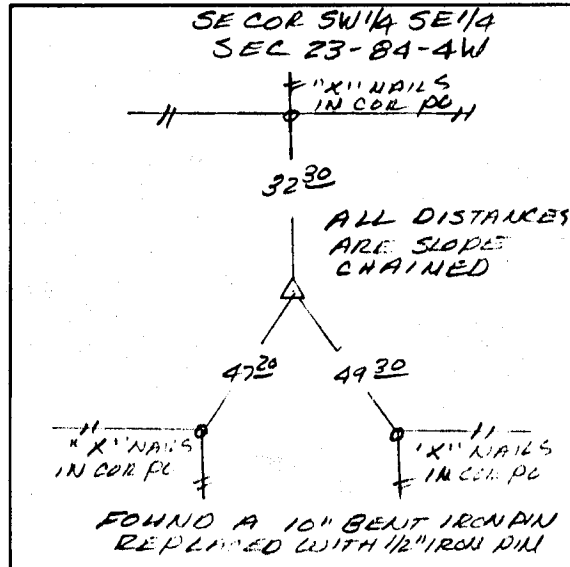
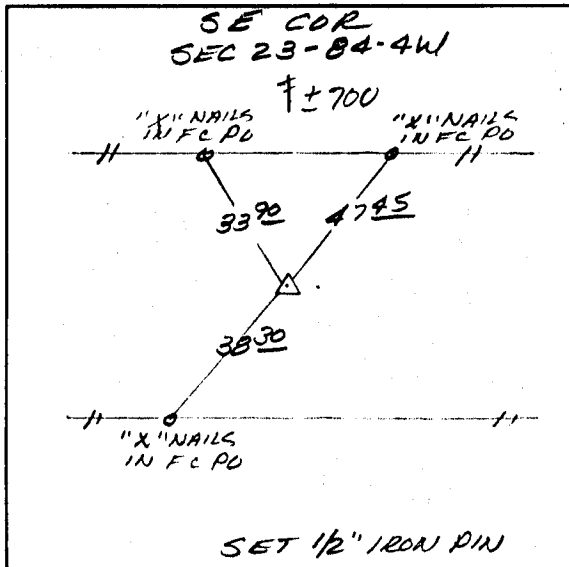
LAND SURVEY MONUMENTS SITUATED IN SECTION 23, TOWNSHIP 84 NORTH, RANGE 4 WEST, OF THE 5TH PRINCIPAL MERIDIAN JONES COUNTY IOWA.
PREVIOUSLY RECORDED IN DOES NOT APPLY IN COUNTY RECORDER'S OFFICE.
(book, page, document number, etc.)

(Show reason for preparing this certificate, the evidence and detailed procedures used in establishing the corner positions and monumentation found or placed.)

MONUMENT DESCRIPTION AND REMARKS: FOUND CONC MONUM AT THE SW COR OF THE SECTION. ALSO FOUND A BENT IRON PIN AT THE SE COR SW 1/4 SE 1/4. MEASURED MILE AND RE-ESTABLISHED SE COR AND S 1/4 COR USING FENCE LINE EVIDENCE IN THE E 1/2 OF THE SECTION.

PLAN - VIEW

(Show a minimum of three reference ties to durable physical objects, relevant monuments and physical conditions that will enable recovery of the corner.)



I hereby certify that the survey work was completed and this certificate was prepared by me or under my direct personal supervision and that I am a duly registered land surveyor under the laws of the state of Iowa. My registration expires December 31, 1922.

Signature: Larry R. McGuire
LARRY R. MCGUIRE

Date: 9/8/92 Reg. No. 9019

LAND CORNERS TO BE RECORDED

Corners	Section	Twp.	Range
SW COR	23	84	4W
S 1/4 COR	23	84	4W
SE COR SW 1/4 SE 1/4	23	84	4W
SE COR	23	84	4W



84426e-090892
84426d-090892
84426c-090892
84427e-090892