

02 MAR 13 AM 9:53

J.D. TJEPKES LS, 23428 RIDGE RD. ANAMOSA IOWA 52205 (319)462-6067

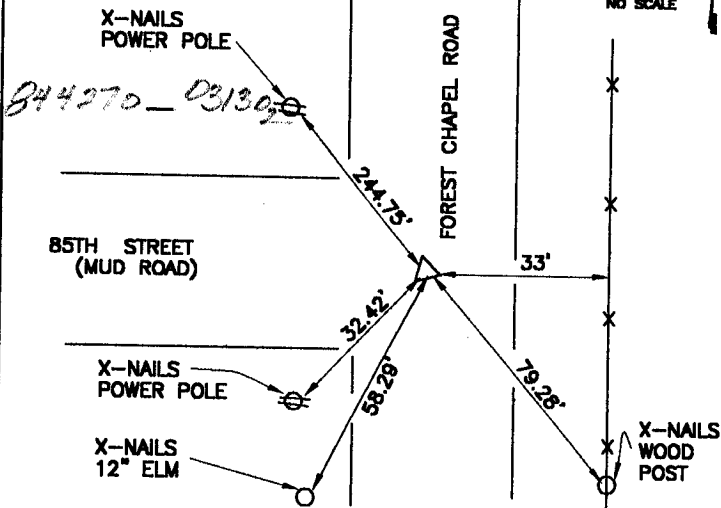
MARIE KRUTZFIELD  
 RECORDED

# UNITED STATES PUBLIC LAND SURVEY CORNER CERTIFICATE

LAND SURVEY MONUMENTS SITUATED IN SECTION 27, TOWNSHIP 84  
 NORTH, RANGE 4 EAST OF THE 5TH P.M., JONES COUNTY, IOWA

### CORNERS TO BE INDEXED

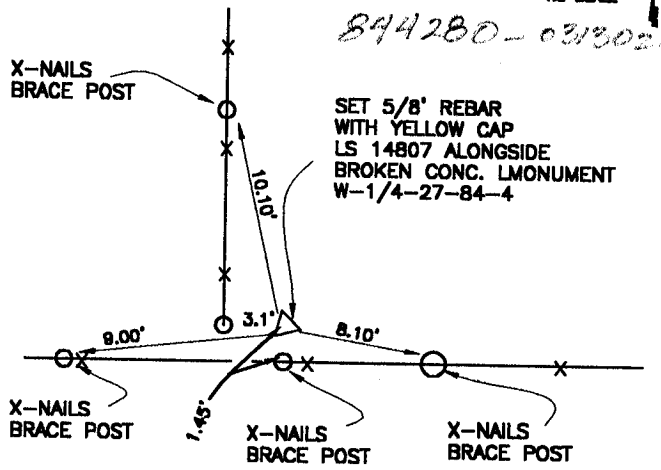
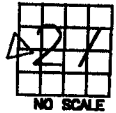
CORNER	SECTION	TOWNSHIP	RANGE
E-1/4	27	84N	4W



PREVIOUSLY RECORDED IN BOOK N/A, PAGE N/A  
 MONUMENT DESCRIPTION AND HOW ESTABLISHED. SET 5/8" X 24" REBAR WITH YELLOW CAP LS 14807 PER PHYSICAL EVIDENCE, 33' SOUTH APPARENT NORTHERLY RIGHT OF WAY OF 85TH ST. & IN THE CENTER OF FOREST CHAPEL ROAD. SET REFERENCE POINTS AND TIED OUT AS INDICATED. EAST QUARTER CORNER SECTION 27, TOWNSHIP 84 NORTH, RANGE 4 WEST, 5TH PM, JONES COUNTY, IA.

### CORNERS TO BE INDEXED

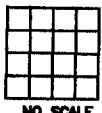
CORNER	SECTION	TOWNSHIP	RANGE
W-1/4	27	84N	4W



PREVIOUSLY RECORDED IN BOOK N/A, PAGE N/A  
 MONUMENT DESCRIPTION AND HOW ESTABLISHED. FOUND BROKEN CONCRETE MONUMENT 12" BELOW SURFACE 1.5' NORTH FENCE. SET 5/8" REBAR ON TOP OF MONUMENT. SET 5/8" X 24" REBAR WITH YELLOW CAP LS 14807 ALONG SOUTH SIDE OF CONCRETE MONUMENT. SET REFERENCE POINTS AND TIED OUT AS INDICATED. WEST QUARTER CORNER OF SECTION 27, TOWNSHIP 84 NORTH, RANGE 4 WEST OF THE 5TH PM, JONES COUNTY, IOWA.

### CORNERS TO BE INDEXED

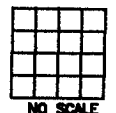
CORNER	SECTION	TOWNSHIP	RANGE



PREVIOUSLY RECORDED IN BOOK \_\_\_\_\_, PAGE \_\_\_\_\_  
 MONUMENT DESCRIPTION AND HOW ESTABLISHED \_\_\_\_\_

### CORNERS TO BE INDEXED

CORNER	SECTION	TOWNSHIP	RANGE



PREVIOUSLY RECORDED IN BOOK \_\_\_\_\_, PAGE \_\_\_\_\_  
 MONUMENT DESCRIPTION AND HOW ESTABLISHED \_\_\_\_\_

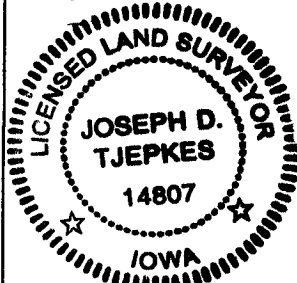
I hereby declare that this plat, survey or report was made by me or under my direct personal supervision and that I am a duly registered Land Surveyor under the laws of the State of Iowa.

Signed:

*[Signature]* 3-13-02

Joseph D. Tjepkes L.S. Iowa Reg. No. 14807  
 My Registration Renewal Date is December 31, 2002

SEAL



J.D. TJEPKES LS 14807  
 23428 RIDGE ROAD  
 ANAMOSA, IOWA 52205