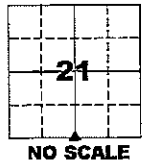


Marie Krutzfield, Recorder
 Jones County, Iowa

PREPARED BY
 CLARENCE J. WALTON, JONES COUNTY ENGINEER'S OFFICE, 19501 HWY. 64, ANAMOSA, IOWA, 52205 (319) 462-3785

**UNITED STATES PUBLIC LAND
 SURVEY CORNER CERTIFICATE**
 LAND SURVEY MONUMENTS SITUATED IN SECTION 21, TOWNSHIP 84 NORTH,
 RANGE 4 WEST OF THE 5TH PRINCIPAL MERIDIAN, JONES COUNTY, IOWA.

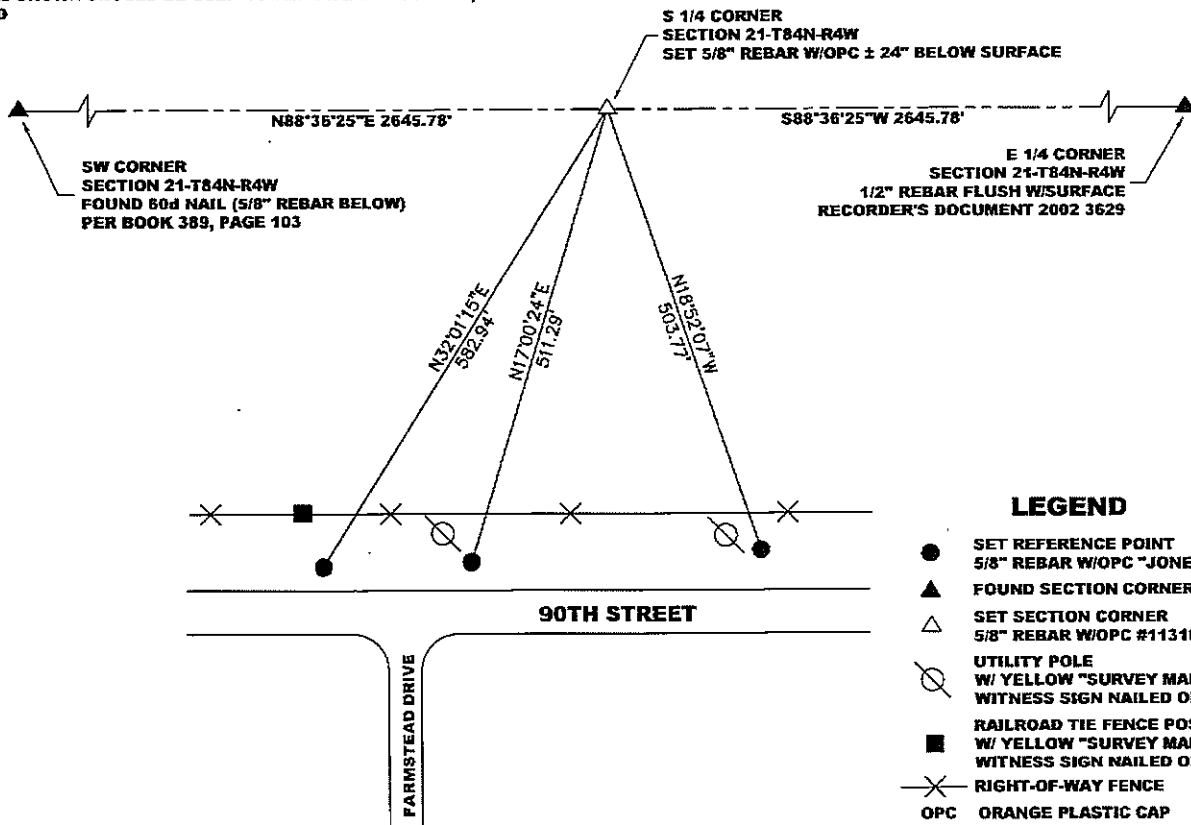
CORNER SECTION TOWNSHIP RANGE
 S 1/4 21 84N 4W



OFFICE FILE NO.

STATE PLANE COORDINATE
 NAD 83 IOWA NORTH
 N 3493885.55
 E 5514123.86

NOTE:
 THE STATE PLANE COORDINATE AS INDICATED IS FOR CONVENIENCE ONLY.
 THE TIES AS SHOWN SHOULD BE USED TO REPLACE THE CORNER, IF
 DESTROYED



LEGEND

- SET REFERENCE POINT
5/8" REBAR W/OPC "JONES COUNTY"
- ▲ FOUND SECTION CORNER
- △ SET SECTION CORNER
5/8" REBAR W/OPC #11310
- UTILITY POLE
W/ YELLOW "SURVEY MARKER"
WITNESS SIGN NAILED ON
- RAILROAD TIE FENCE POST
W/ YELLOW "SURVEY MARKER"
WITNESS SIGN NAILED ON
- × RIGHT-OF-WAY FENCE
- OPC ORANGE PLASTIC CAP
- () RECORDED AS

PREVIOUSLY RECORDED IN BOOK 389, PAGE 103

MONUMENT DESCRIPTION AND HOW ESTABLISHED FOUND NO MONUMENT. SET 5/8" REBAR W/OPC #11310 ON LINE BETWEEN AND EQUIDISTANT FROM THE SW AND SE CORNERS OF SECTION 21, TOWNSHIP 84 NORTH, RANGE 4 WEST OF THE 5TH PRINCIPAL MERIDIAN, JONES COUNTY, IOWA.



I hereby certify that this land surveying document and the related survey work was performed by me or under my direct personal supervision and that I am a duly registered Land Surveyor under the laws of the State of Iowa.

Signature: *Clarence J. Walton* 3/11/08
 Clarence J. Walton, L.S.
 My Registration Renewal Date is December 31, 2009
 Iowa License Number 11310
 Pages or sheets covered by this seal: 1 of 1.

- A. THERE IS NO CERTIFICATE FOR THE CORNER ON FILE WITH THE RECORDER OF THE COUNTY IN WHICH THE CORNER IS LOCATED.
- B. THE CORNER MONUMENT HAS BEEN REPLACED OR MODIFIED.
- C. THE SURVEYOR IN RESPONSIBLE CHARGE OF THE LAND SURVEYING ACCEPTS A CORNER POSITION THAT DIFFERS FROM THAT SHOWN IN THE PUBLIC RECORDS OF THE COUNTY IN WHICH THE CORNER IS LOCATED.
- D. THE REFERENCE TIES REFERRED TO IN AN EXISTING PUBLIC RECORD NO LONGER EXIST.

CORNERS TO BE INDEXED

CORNER	SECTION	TOWNSHIP	RANGE
S 1/4 CORNER	21	84N	4W
N 1/4 CORNER	28	84N	4W

JONES COUNTY ENGINEER'S OFFICE



19501 HWY. 64, ANAMOSA, IOWA 52205
 (319) 462-3785