

UNITED STATES PUBLIC LAND SURVEY CORNER CERTIFICATE

Land Survey Monuments situated in Section 21, Township 84N, Range 4W, of the Fifth Principal Meridian, Jones County, Iowa. Previously recorded in SEE NOTE in the Office of the County Recorder

Monument Description and Remarks:

SE CORNER - FD. 1/2' IRON ROD IN CONCRETE MONUMENT

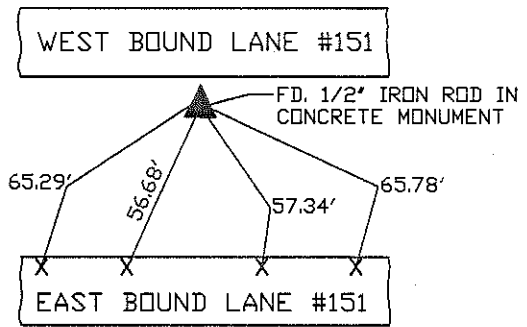
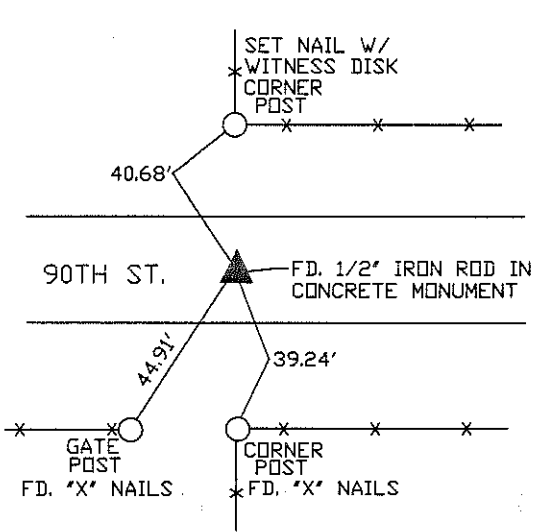
E1/4 CORNER - FD. 1/2' IRON ROD IN CONCRETE MONUMENT

NOTE - THE SE CORNER WAS PREVIOUSLY TIED AND RECORDED IN FILE NO. 2002 3629

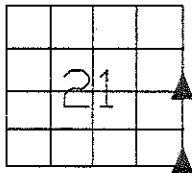
SE CORNER

PLAN VIEW

E1/4 CORNER



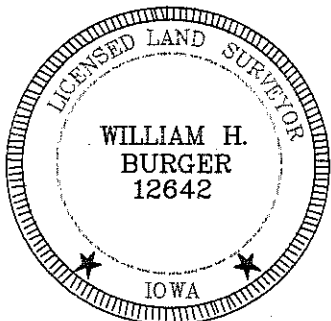
FD. CUT 'X' IN EDGE CONCRETE SLAB AT ALL TIE POINTS



SEC. 21 TWP. 84N RANGE 4W

CORNERS TO BE INDEXED

SE CORNER	21	84N	4W
E1/4 CORNER	21	84N	4W



I hereby certify that this land surveying document was prepared and related survey work was performed by me or under my direct personal supervision and that I am a duly licensed Land Surveyor under the laws of the State of Iowa.

William H. Burger 11/2/11
 William H. Burger Date

License number 12642

My license renewal date is December 31, 2012

Pages or Sheets covered by this seal: Sheet 1 of 1

2002 3629
FILED
RECORDERS OFFICE
JONES COUNTY IOWA

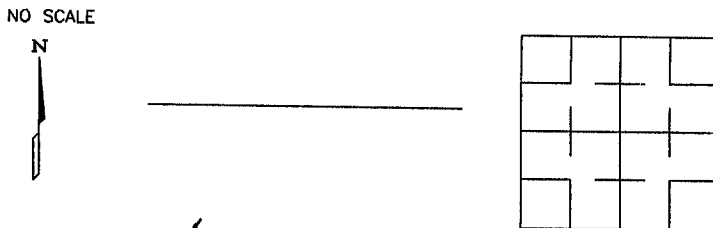
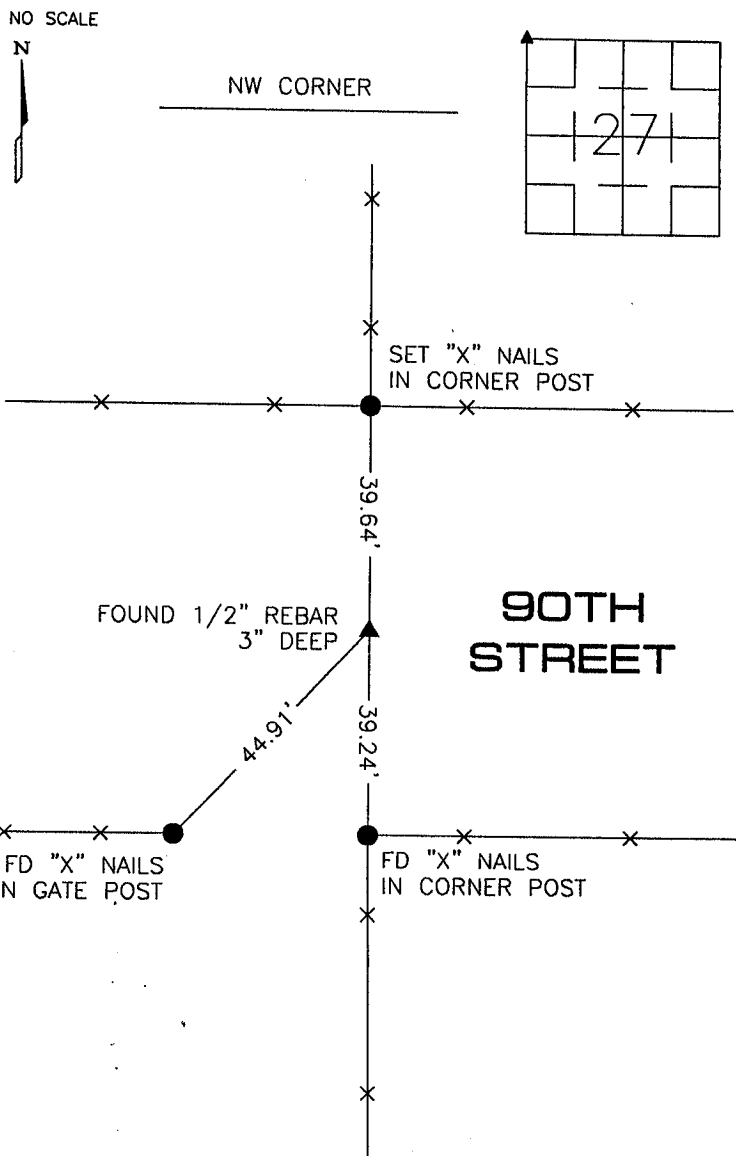
02 OCT -3 AM 11:57

MARIE KRUTZFIELD
RECORDER 6.00 pd

PREPARED BY
STEPHEN MICHAEL BRAIN, BRAIN ENGINEERING, INC., 777 10TH STREET, MARION, IOWA 52302 PH. (319) 373-1318

UNITED STATES PUBLIC LAND SURVEY CORNER CERTIFICATE

LAND SURVEY MONUMENTS SITUATED IN SECTION 27, TOWNSHIP 84 NORTH
RANGE 4 WEST OF THE 5TH P.M., JONES COUNTY, IOWA.



1136
844280-100102

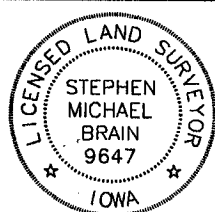
PREVIOUSLY RECORDED IN BOOK _____ PAGE _____

MONUMENT DESCRIPTION AND HOW ESTABLISHED _____

FOUND 1/2" REBAR IN ROCK ROAD 3" DEEP.

PREVIOUSLY RECORDED IN BOOK _____ PAGE _____

MONUMENT DESCRIPTION AND HOW ESTABLISHED _____



I hereby certify that this land surveying document and the related survey work was performed by me or under my direct personal supervision and that I am a duly licensed Land Surveyor under the laws of the State of Iowa.

Signed *Stephen Michael Brain* Date *10/1/02*
Stephen Michael Brain, L.S.
My License Renewal Date is December 31, 2002
License Number 9647
Pages or sheets covered by this seal: 1 of 1

- A. THERE IS NO CERTIFICATE FOR THE CORNER ON FILE WITH THE RECORDER OF THE COUNTY IN WHICH THE CORNER IS LOCATED
- B. THE SURVEYOR IN RESPONSIBLE CHARGE OF THE LAND SURVEYING ACCEPTS A CORNER POSITION WHICH DIFFERS FROM THAT SHOWN IN THE PUBLIC RECORDS OF THE COUNTY IN WHICH THE CORNER IS LOCATED.
- C. THE CORNER MONUMENT IS REPLACED OR MODIFIED IN ANY WAY.
- D. THE REFERENCE TIES REFERRED TO IN AN EXISTING PUBLIC RECORD ARE NOT CORRECT.

CORNERS TO BE INDEXED

CORNER	SECTION	TOWNSHIP	RANGE
NW CORNER	27	T84N	R4W

BRAIN ENGINEERING, INC.

777 10TH STREET
MARION, IOWA 52302 28502-10
(319) 373-1318

SMB:TD
10/1/02