

2003 3399

FILED  
RECORDERS OFFICE  
JONES COUNTY IOWA

03 JUL 21 AM 10:55

MARIE KRUTZFIELD  
RECORDER 11.00 *PL*

CRAPNELL LAND SURVEYING COMPANY / MAJOR ENGINEERING 814 E. RIVER DRIVE DAVENPORT, IOWA (563)336-3256  
**UNITED STATES PUBLIC LAND SURVEY CORNER CERTIFICATE**

OF  
Land Survey Monuments situated in Section 29, Township 84, Range 4W  
of the Fifth Principal Meridian, JONES County, Iowa.  
Previously recorded in \_\_\_\_\_ in County Recorder's Office

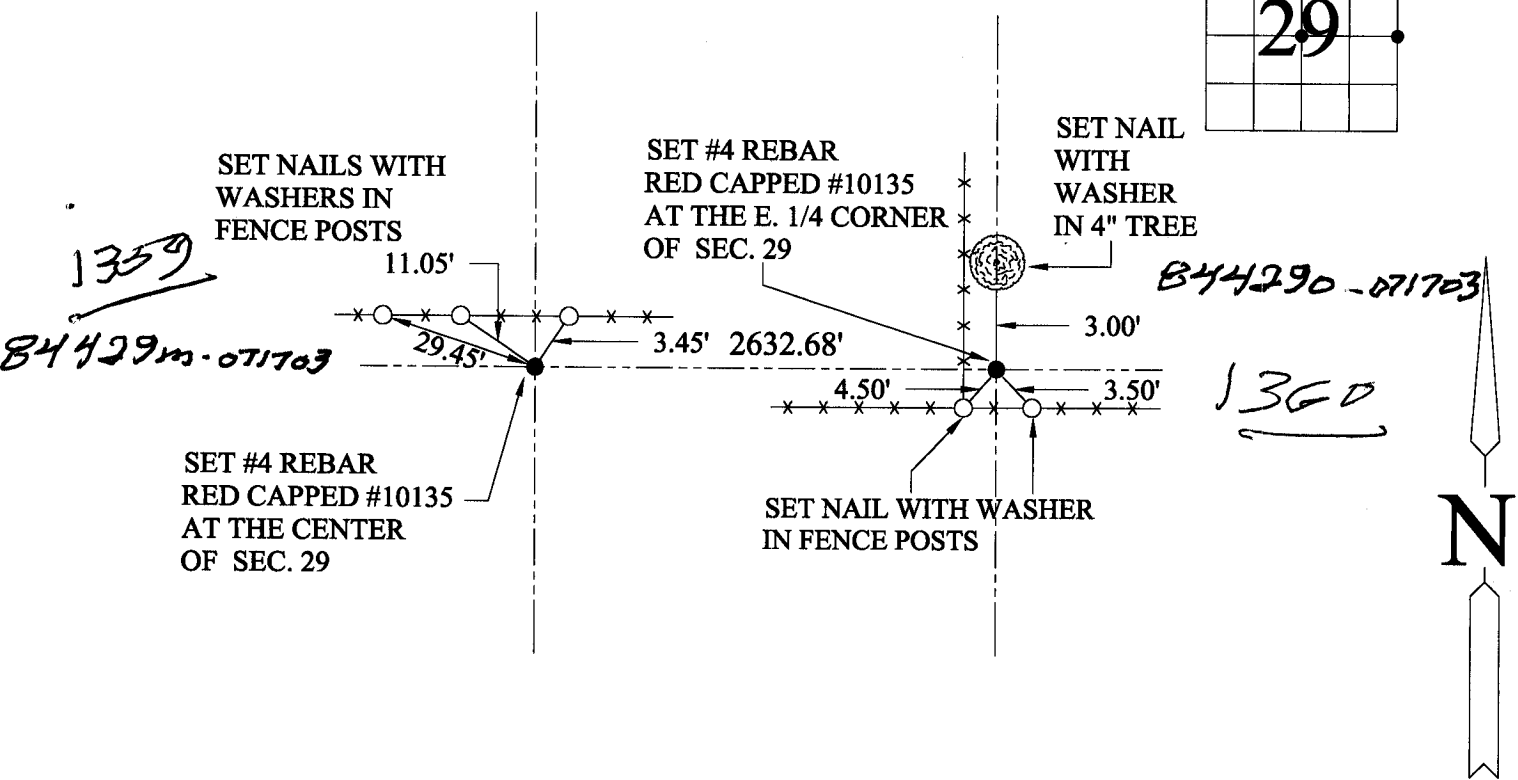
(book, page, document number, ect.)  
(Show reason for preparing this certificate, the evidence and detailed procedures used in establishing the corner positions and monumentation found or placed.)

Monument Description and Remarks: \_\_\_\_\_

SET #4 REBAR RED CAPPED #10135 AT THE CENTER OF SECTION BEARING/BEARING BETWEEN QUARTER CORNERS  
SET #4 REBAR RED CAPPED #10135 AT THE E. 1/4 CORNER OF SECTION HALF WAY & ON LINE BETWEEN THE NE CORNER & THE SE CORNER  
MONUMENTS WERE SET BY STANDARD SECTION BREAKDOWN

### PLAN - VIEW

(SHOW A MINIMUM OF THREE REFERENCE TIES TO DURABLE PHYSICAL OBJECTS, RELEVANT MONUMENTS AND PHYSICAL CONDITIONS THAT WILL ENABLE RECOVERY OF THE CORNER.)



I HEREBY CERTIFY THAT THIS LAND SURVEYING DOCUMENT WAS PREPARED AND THE RELATED SURVEY WORK WAS PERFORMED BY ME OR UNDER MY DIRECT PERSONAL SUPERVISION AND THAT I AM A DULY LICENSED LAND SURVEYOR UNDER THE LAWS OF THE STATE OF IOWA.

Signature: *[Signature]*  
Name typed or printed: MICHAEL D. CRAPNELL

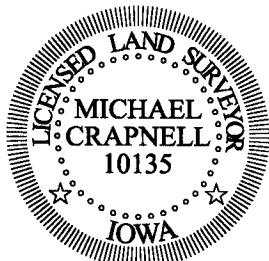
Date: 7-17-03 Reg.No. 10135

My registration renewal date is December 31, 2004

List Corners to be Indexed

Corners	Section	Twp	Range
CENTER	29	84	4W
E. 1/4 CORNER	29	84	4W

SEAL



*I*