

UNITED STATES PUBLIC LAND SURVEY CORNER CERTIFICATE

OF

Land Survey Monuments situated in Section 2, Township 84, Range 4, of the Fifth Principal Meridian, JONES County, Iowa. Previously recorded in N/A in County Recorder's Office.

(book, page, document number, etc.)

(Show reason for preparing this certificate, the evidence and detailed procedures used in establishing the corner positions and monumentation found or placed.)

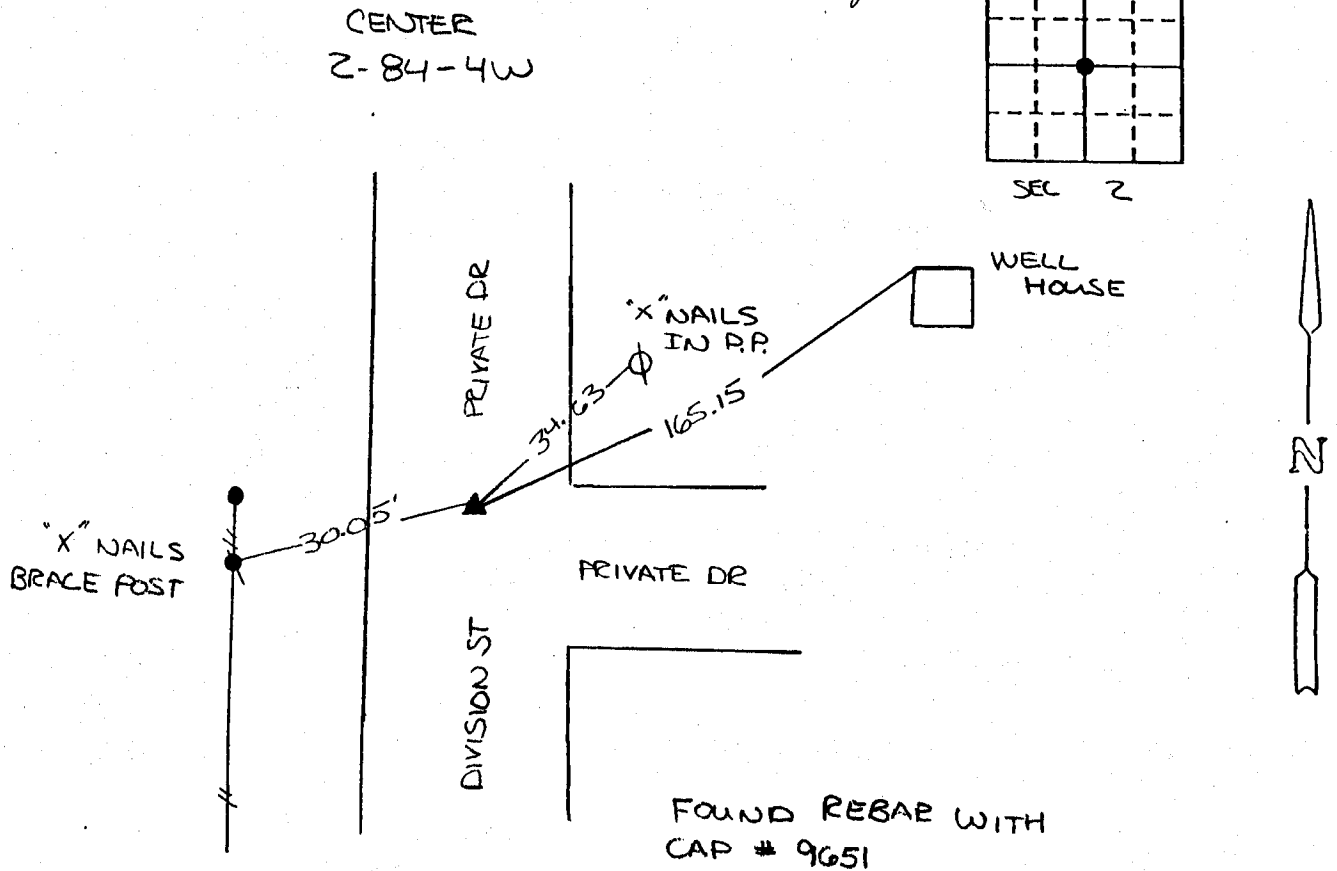
Monument Description and Remarks: FOUND CENTER 2-84-4W @ E
DIVISION ST & JUST NORTH PRIVATE DR. USING UNRECORDED TIES

960 FILED
RECORDERS OFFICE
JONES COUNTY IOWA

92 OCT 12 AM 10:23

PLAN - VIEW 327 PAGE 34

(Show a minimum of three reference ties to durable physical objects, relevant monuments and physical conditions that will enable recovery of the corner.)



2-25-93
ON CARD 2-25-92 M.S.

I hereby certify that the survey work was completed and this certificate was prepared by me or under my direct personal supervision and that I am a duly registered land surveyor under the laws of the state of Iowa.

Signature: Michael G Geier
Name typed or printed: Michael G Geier, L.S.
Date: 10-7-92 Reg. No. 11804

Corners	List Corners to be Indexed		
	Section	Twp	Range
CTR	2	84	4



SEAL

UNITED STATES PUBLIC LAND SURVEY CORNER CERTIFICATE OF

LAND SURVEY MONUMENTS SITUATED IN SECTION 2 TOWNSHIP B4 N , RANGE 4 W
OF THE FIFTH PRINCIPAL MERIDIAN, JONES COUNTY, IOWA.
PREVIOUSLY RECORDED IN _____ IN COUNTY RECORDER'S OFFICE.

(Show reason for preparing this certificate, the evidence and detailed procedures used in establishing the corner positions and monumentation found or placed.)

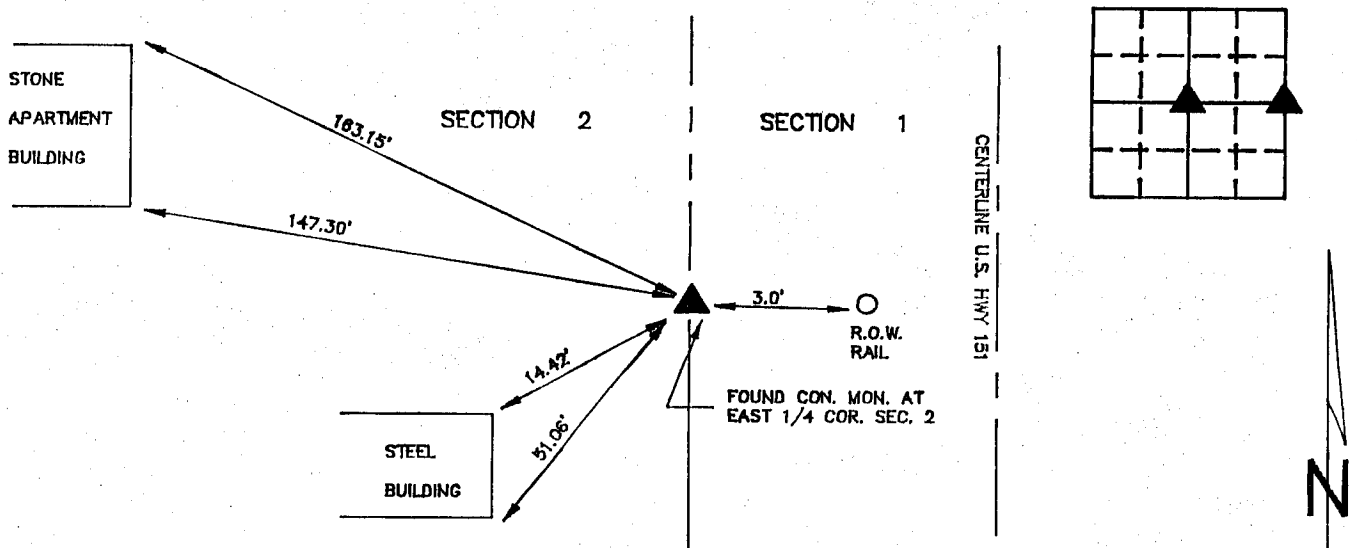
Monument Description and Remarks: FOUND CONCRETE MONUMENT AT EAST 1/4 CORNER SEC 2, T84N, R4W.

FOUND 2" LONG 5/8" RE-ROD WITH CAP NO. 9651 AT S.W.COR. NE 1/4 SEC 2, T84N, R4W.

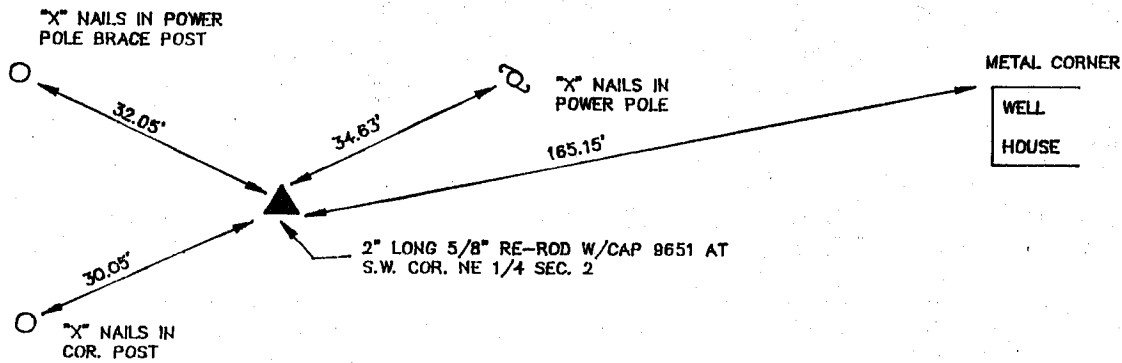
PLAN - VIEW

(Show a minimum of three reference ties to durable physical objects, relevant monuments and physical conditions that will enable recovery of the corner.)

E 1/4 CORNER SECTION 2

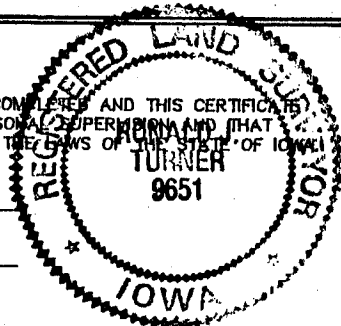


SW NE 1/4 COR. SEC. 2



I HEREBY CERTIFY THAT THE SURVEY WORK WAS COMPLETED AND THIS CERTIFICATE WAS PREPARED BY ME OR UNDER MY DIRECT PERSONAL SUPERVISION AND THAT I AM A DULY REGISTERED LAND SURVEYOR UNDER THE LAWS OF THE STATE OF IOWA.

NAME: RONALD J. TURNER REG. NO. 9651
DATE: Jan 31, 1991



LIST CORNERS TO BE INDEXED

CORNERS	SECTION	TWP	RANGE
E 1-4	2	B4N	4W
SW NE1/4	2	B4N	4W

	IJW ENGINEERS & SURVEYORS P.C.	MONUMENT RECORD			
	3210 ST. JOSEPH DR 302 S. RIVER PARK DR P.O. BOX 275 DUBUQUE, IA 52001 319558-2484 GUTTENBERG, IA 52052 319252-3823 GALENA, ILL. 61036 815777-0359	COUNTY: <u>JONES</u> TOWNSHIP: <u>FAIRVIEW</u>	DATE: <u>1-21-91</u> REVISED:	FIELD BOOK NO. <u>315</u>	PROJ. NO. <u>89082-5</u>

844020-012191