

UNITED STATES PUBLIC LAND SURVEY CORNER CERTIFICATE OF

LAND SURVEY MONUMENTS SITUATED IN SECTION 2 TOWNSHIP B4 N , RANGE 4 W
OF THE FIFTH PRINCIPAL MERIDIAN, JONES COUNTY, IOWA.
PREVIOUSLY RECORDED IN _____ IN COUNTY RECORDER'S OFFICE.

(Show reason for preparing this certificate, the evidence and detailed procedures used in establishing the corner positions and monumentation found or placed.)

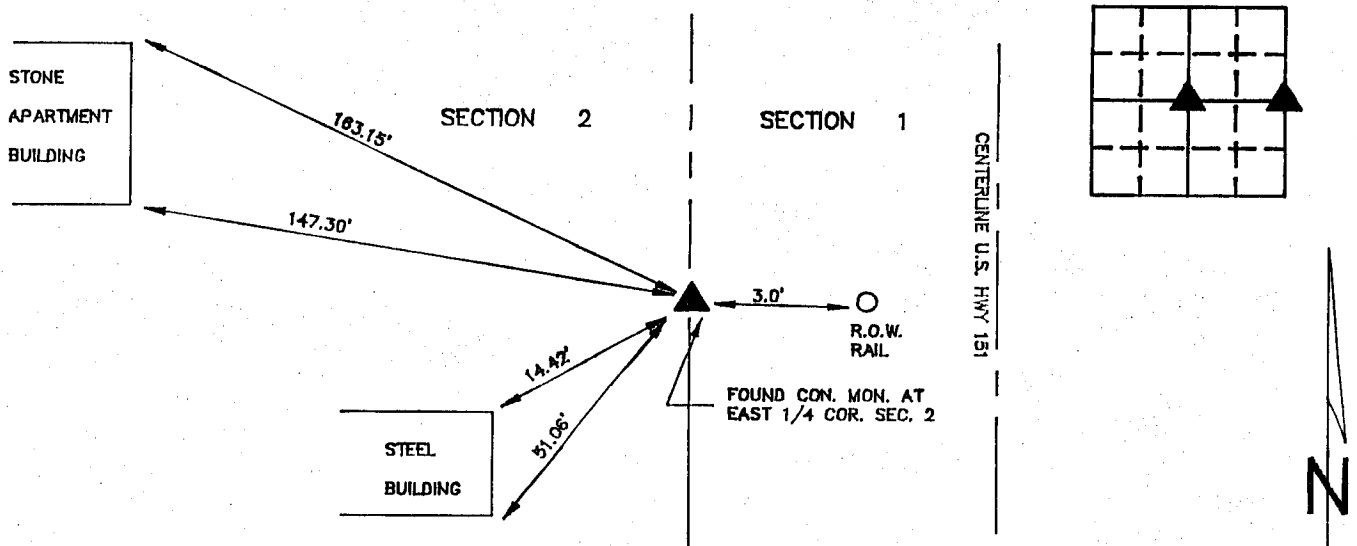
Monument Description and Remarks: FOUND CONCRETE MONUMENT AT EAST 1/4 CORNER SEC 2, T84N, R4W.

FOUND 2" LONG 5/8" RE-ROD WITH CAP NO. 9651 AT S.W.COR. NE 1/4 SEC 2, T84N, R4W.

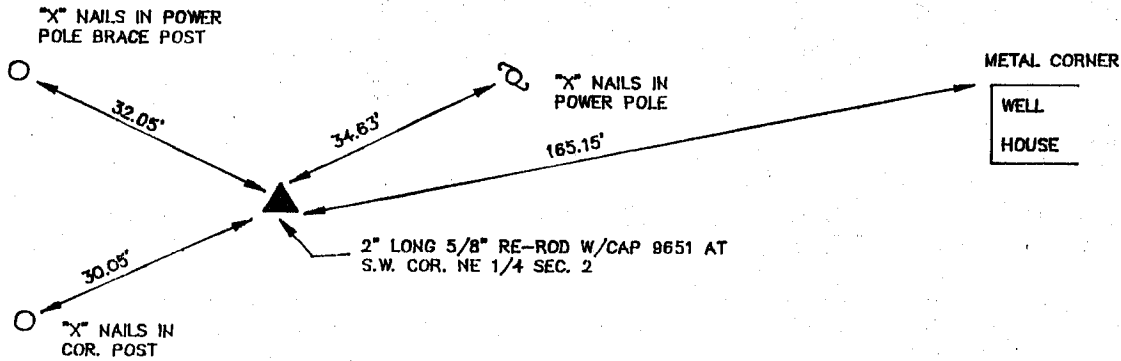
PLAN - VIEW

(Show a minimum of three reference ties to durable physical objects, relevant monuments and physical conditions that will enable recovery of the corner.)

E 1/4 CORNER SECTION 2

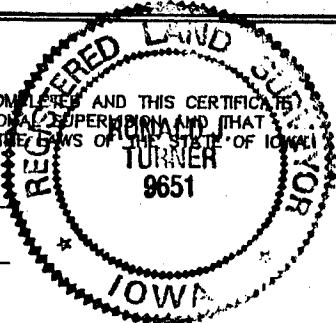


SW NE 1/4 COR. SEC. 2



I HEREBY CERTIFY THAT THE SURVEY WORK WAS COMPLETED AND THIS CERTIFICATE WAS PREPARED BY ME OR UNDER MY DIRECT PERSONAL SUPERVISION AND THAT I AM A DULY REGISTERED LAND SURVEYOR UNDER THE LAWS OF THE STATE OF IOWA.

NAME: RONALD J. TURNER REG. NO. 9651
DATE: Jan 31, 1991



LIST CORNERS TO BE INDEXED

CORNERS	SECTION	TWP	RANGE
E 1-4	2	B4N	4W
SW NE1/4	2	B4N	4W

	IJW ENGINEERS & SURVEYORS P.C. 3210 ST. JOSEPH DR DUBUQUE, IA 52001 319558-2484 302 S. RIVER PARK DR GUTTENBERG, IA 52052 319252-3823 P.O. BOX 275 GALENA, ILL. 61036 815777-0359	<h3 style="margin: 0;">MONUMENT RECORD</h3> COUNTY: <u>JONES</u> TOWNSHIP: <u>FAIRVIEW</u>		
	DATE: <u>1-21-91</u> REVISED:	FIELD BOOK NO. <u>315</u>	PROJ. NO. <u>89082-5</u>	INDEX NO.

844020-012191