

THIS IS NOT A CERTIFICATION

JONES COUNTY ENGINEER'S OFFICE, 19501 HWY. 64, ANAMOSA, IOWA, 52205 (319)462-3785

UNITED STATES PUBLIC LAND SURVEY CORNER CERTIFICATE

LAND SURVEY MONUMENTS SITUATED IN SECTION 31, TOWNSHIP 84
NORTH, RANGE 4 WEST OF THE 5TH P.M., JONES COUNTY, IOWA

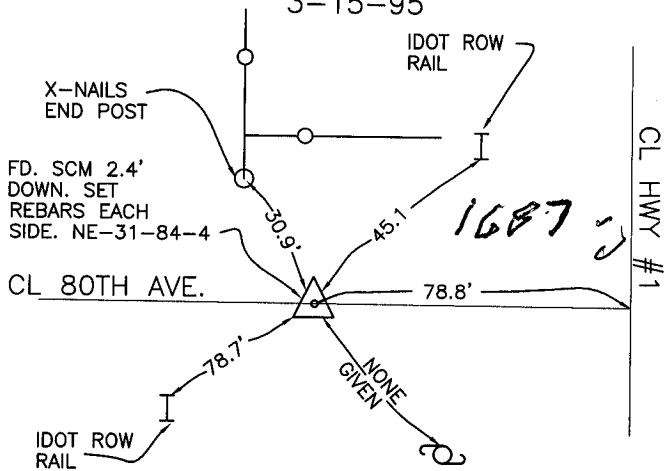
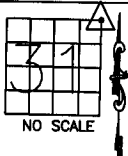
CORNERS TO BE INDEXED

CORNER SECTION TOWNSHIP RANGE
NORTHEAST 31 84 4W

OFFICE FILE NO.

84431e_061104.tif

REF: COUNTY SURVEY CREW
POWELL-TUETKEN-PARKER
3-15-95



PREVIOUSLY RECORDED IN BOOK _____, PAGE _____
MONUMENT DESCRIPTION AND HOW ESTABLISHED FOUND
FOUND STANDARD CONCRETE MONUMENT 2.4' BELOW ROAD SURFACE.
SET 2-5/8"X24" REBARS ALONG EACH SIDE OF MARKER, FLUSH WITH
GROUND. SET 1-5/8"X18" REBAR ABOVE MARKER, DOWN 6". PROJ.
C-782. NORTHEAST CORNER SECTION 31, TOWNSHIP 84 NORTH, RANGE
4 WEST OF THE 5TH PRINCIPAL MERIDIAN, JONES COUNTY, IOWA.

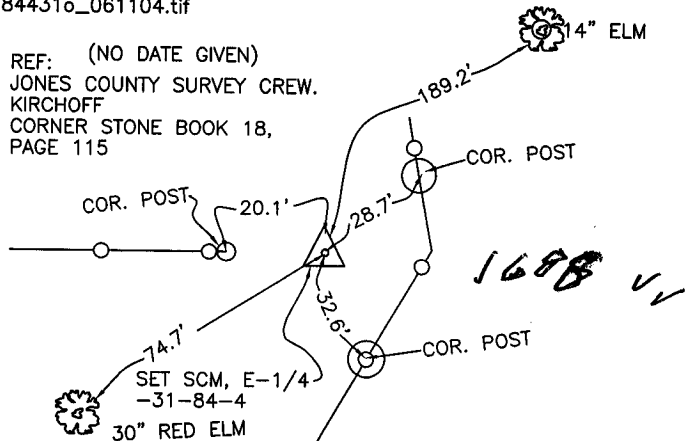
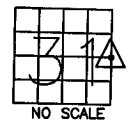
CORNERS TO BE INDEXED

CORNER SECTION TOWNSHIP RANGE
E-QUARTER 31 84 4W

OFFICE FILE NO.

84431o_061104.tif

REF: (NO DATE GIVEN)
JONES COUNTY SURVEY CREW.
KIRCHOFF
CORNER STONE BOOK 18,
PAGE 115



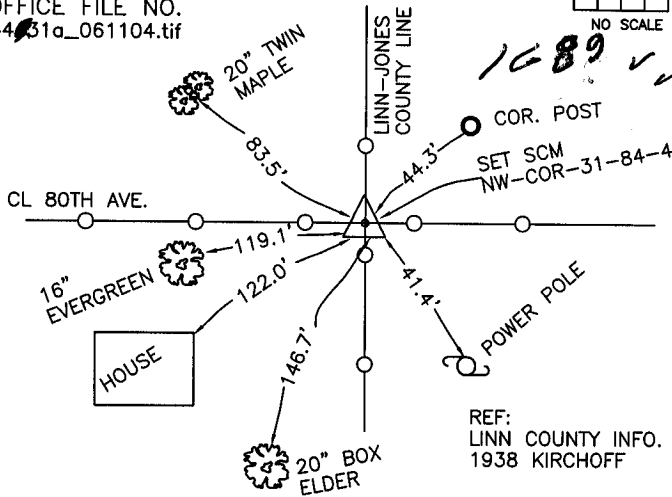
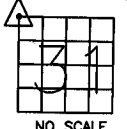
PREVIOUSLY RECORDED IN BOOK _____, PAGE _____
MONUMENT DESCRIPTION AND HOW ESTABLISHED FOUND
5"X12"X20" LIMESTONE 2' BELOW ROAD SURFACE. LOWERED AND SET
STANDARD CONCRETE MONUMENT ABOVE. TOP OF MONUMENT 18" BELOW
ROAD SURFACE. EAST QUARTER CORNER SECTION 31, TOWNSHIP 84
NORTH, RANGE 4 WEST OF THE 5TH PRINCIPAL MERIDIAN, JONES
COUNTY, IOWA.

CORNERS TO BE INDEXED

CORNER SECTION TOWNSHIP RANGE
NORTHWEST 31 84N 4W

OFFICE FILE NO.

84431a_061104.tif



REF:
LINN COUNTY INFO.
1938 KIRCHOFF

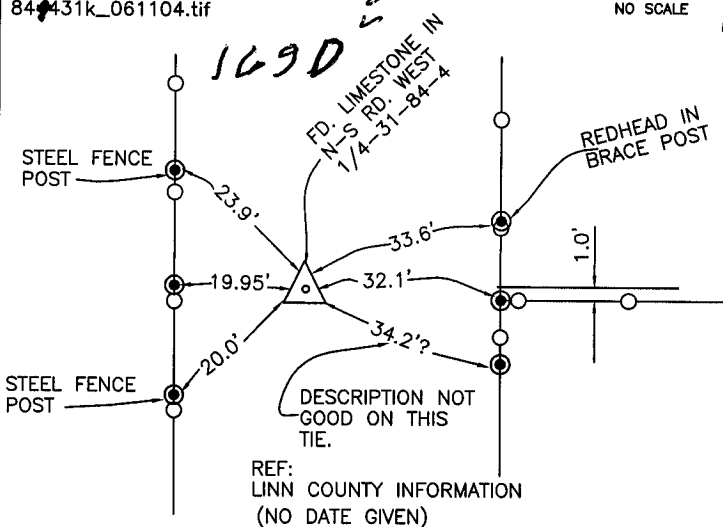
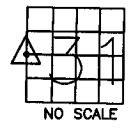
PREVIOUSLY RECORDED IN BOOK _____, PAGE _____
MONUMENT DESCRIPTION AND HOW ESTABLISHED FOUND
PIN 7' WEST OF ROAD ALIGNMENT, SET STANDARD CONCRETE
MONUMENT. TIES AS INDICATED. NORTHWEST CORNER SECTION 31,
TOWNSHIP 84 NORTH, RANGE 4 WEST OF THE 5TH PRINCIPAL MERIDIAN,
JONES COUNTY, IOWA.

CORNERS TO BE INDEXED

CORNER SECTION TOWNSHIP RANGE
W-QUARTER 31 84N 4W

OFFICE FILE NO.

84431k_061104.tif



REF:
LINN COUNTY INFORMATION
(NO DATE GIVEN)

PREVIOUSLY RECORDED IN BOOK _____, PAGE _____
MONUMENT DESCRIPTION AND HOW ESTABLISHED FOUND
LIMESTONE IN NORTH-SOUTH ROAD 8" BELOW SURFACE. LOWERED
STONE, SET STANDARD CONCRETE MONUMENT ABOVE WITH TOP 1'
BELOW ROAD. TIES AS INDICATED. WEST QUARTER CORNER SECTION
31, TOWNSHIP 84 NORTH, RANGE 4 WEST OF THE 5TH PRINCIPAL
MERIDIAN, JONES COUNTY, IOWA.

~~I hereby declare that this plat, survey or report was made by me or under my direct personal supervision and that I am a duly registered Land Surveyor under the laws of the State of Iowa.~~

Signed:

SEAL

JONES COUNTY
ENGINEER'S OFFICE

19501 HWY. 64,
ANAMOSA, IOWA,
52205 (319)462-3785