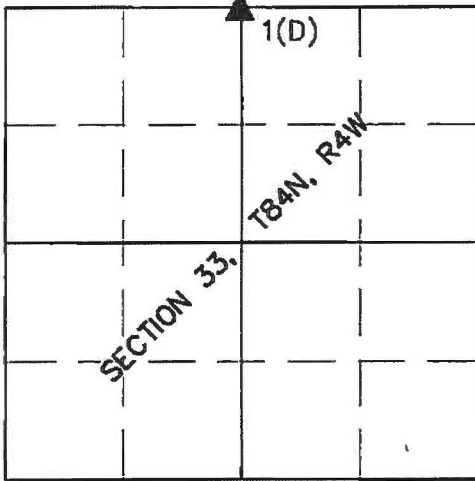


Instrument #: 2022-3385  
 12/01/2022 08:46:56 AM Total Pages: 1  
 ZSC SECTION CORNER CERTIFICATE  
 Recording Fee: \$7.00 Transfer Tax: \$0  
 Sheri L. Jones, Recorder, Jones County Iowa



PREPARED BY GREGG E. SAMPSON P.L.S. HALL & HALL ENGINEERS, INC. 1860 BOYSON RD. HIAWATHA, IA 52233 (319) 362-9548

SECTION CORNER INDEX

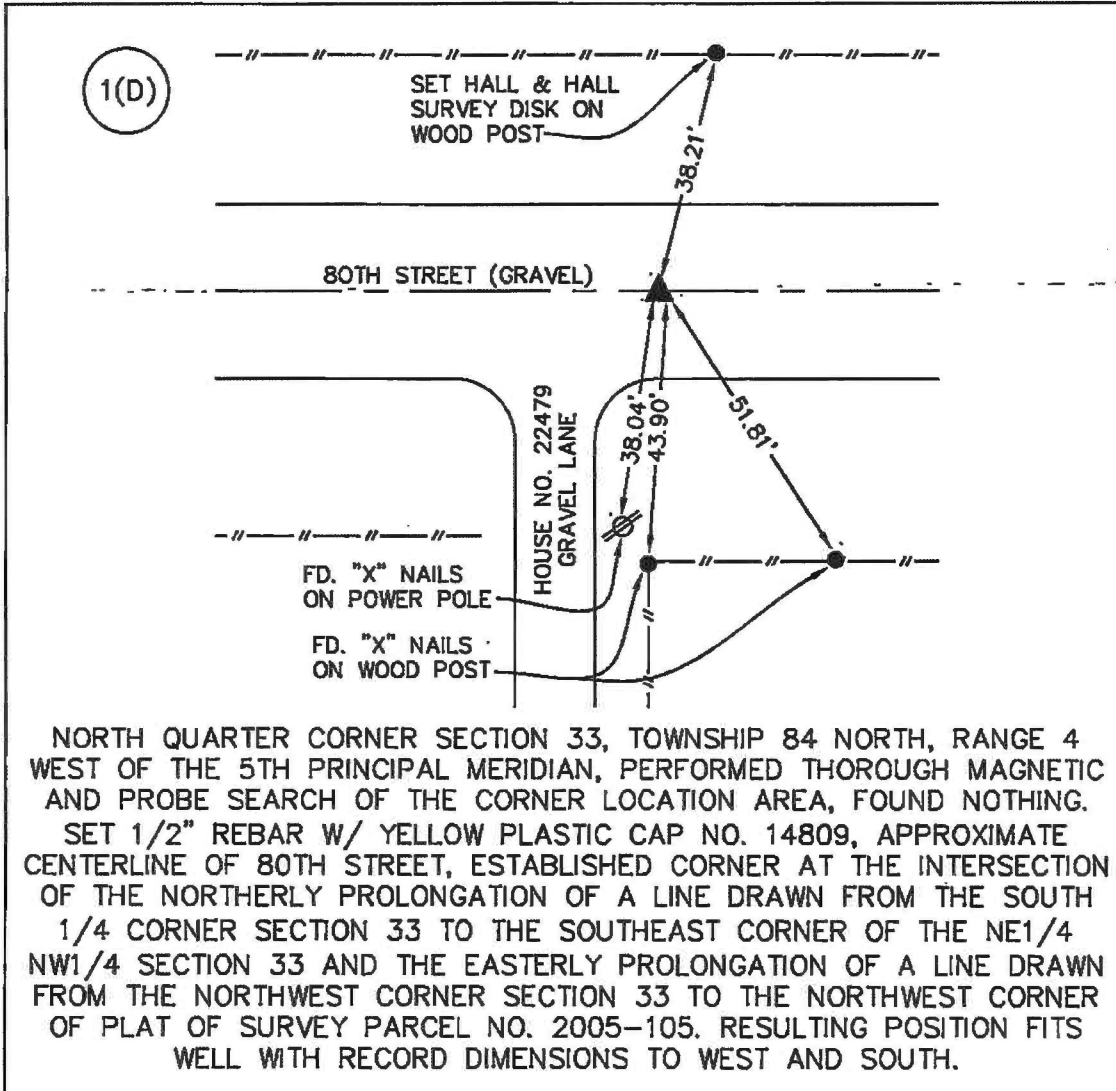


U.S. PUBLIC LAND SURVEY CORNER CERTIFICATE

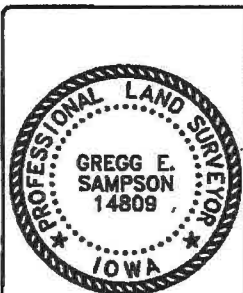
LAND SURVEY MONUMENTS SITUATED IN SECTION 33, TOWNSHIP 84 NORTH, RANGE 4 WEST, OF THE FIFTH PRINCIPAL MERIDIAN, JONES COUNTY, IOWA.

REASON FOR PREPARING CERTIFICATE:

- A) THERE IS NO CERTIFICATE FOR THE CORNER ON FILE WITH THE RECORDER OF THE COUNTY IN WHICH THE CORNER IS LOCATED.
- B) CORNER POSITION DIFFERS FROM THAT SHOWN IN THE PUBLIC RECORDS OF THE COUNTY IN WHICH THE CORNER IS LOCATED.
- C) THE CORNER MONUMENT HAS BEEN REPLACED OR MODIFIED.
- D) THE REFERENCE TIES REFERRED TO IN AN EXISTING PUBLIC RECORD ARE INCORRECT OR MISSING.



NORTH QUARTER CORNER SECTION 33, TOWNSHIP 84 NORTH, RANGE 4 WEST OF THE 5TH PRINCIPAL MERIDIAN, PERFORMED THOROUGH MAGNETIC AND PROBE SEARCH OF THE CORNER LOCATION AREA, FOUND NOTHING. SET 1/2" REBAR W/ YELLOW PLASTIC CAP NO. 14809, APPROXIMATE CENTERLINE OF 80TH STREET, ESTABLISHED CORNER AT THE INTERSECTION OF THE NORTHERLY PROLONGATION OF A LINE DRAWN FROM THE SOUTH 1/4 CORNER SECTION 33 TO THE SOUTHEAST CORNER OF THE NE1/4 NW1/4 SECTION 33 AND THE EASTERLY PROLONGATION OF A LINE DRAWN FROM THE NORTHWEST CORNER SECTION 33 TO THE NORTHWEST CORNER OF PLAT OF SURVEY PARCEL NO. 2005-105. RESULTING POSITION FITS WELL WITH RECORD DIMENSIONS TO WEST AND SOUTH.



I hereby certify that this land surveying document was prepared and the related survey work was performed by me or under my direct personal supervision and that I am a duly licensed Land Surveyor under the laws of the State of Iowa.

Signed: *[Signature]* Date: 11/29/2022

GREGG E. SAMPSON, P.L.S. Iowa License No. 14809

My license renewal date is December 31, 2022

ENTIRE SUBMISSION IS COVERED BY THIS SEAL UNLESS SPECIFIED BELOW: THIS SHEET ONLY

2005 1261

FILED  
RECORDERS OFFICE  
JONES COUNTY IOWA

05 APR 13 AM 8:42

MARIE KRUTZFIELD

7:00 PM

J.D. TJEPKES, LS. 14807, 23428 RIDGE ROAD, ANAMOSA, IOWA, 52205 (319-462-6067)

# UNITED STATES PUBLIC LAND SURVEY CORNER CERTIFICATE

LAND SURVEY MONUMENTS SITUATED IN SECTION 33, TOWNSHIP 84  
NORTH, RANGE 4 WEST OF THE 5TH P.M., JONES COUNTY, IOWA

### CORNERS TO BE INDEXED

CORNER SECTION TOWNSHIP RANGE  
N 1/4 33 84N 4W

OFFICE FILE NO.

844330-041205.fig



NO SCALE

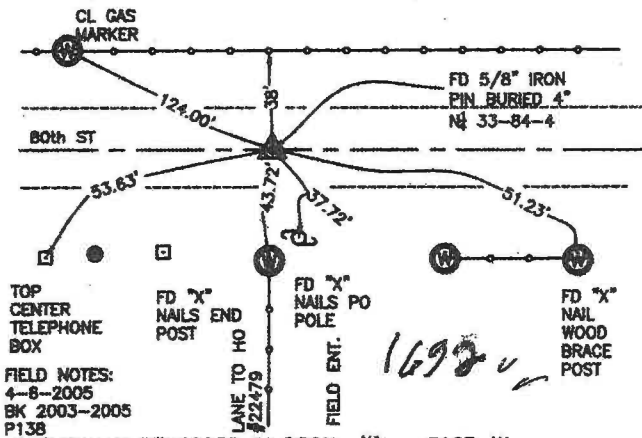
### CORNERS TO BE INDEXED

CORNER SECTION TOWNSHIP RANGE

OFFICE FILE NO.



NO SCALE



FIELD NOTES:  
4-8-2005  
BK 2003-2005  
P138

PREVIOUSLY RECORDED IN BOOK NA, PAGE NA  
MONUMENT DESCRIPTION AND HOW ESTABLISHED  
PER PLAT OF SURVEY FILED BY DILLON FD 5/8" IRON PIN BURIED 4" IN  
ROAD BED, 80th ST. TIES AS INDICATED FOR N 1/4 SECTION 33 T84N R4W.

PREVIOUSLY RECORDED IN BOOK \_\_\_\_\_, PAGE \_\_\_\_\_  
MONUMENT DESCRIPTION AND HOW ESTABLISHED \_\_\_\_\_

### CORNERS TO BE INDEXED

CORNER SECTION TOWNSHIP RANGE

OFFICE FILE NO.



NO SCALE

### CORNERS TO BE INDEXED

CORNER SECTION TOWNSHIP RANGE

OFFICE FILE NO.



NO SCALE

PREVIOUSLY RECORDED IN BOOK \_\_\_\_\_, PAGE \_\_\_\_\_  
MONUMENT DESCRIPTION AND HOW ESTABLISHED \_\_\_\_\_

PREVIOUSLY RECORDED IN BOOK \_\_\_\_\_, PAGE \_\_\_\_\_  
MONUMENT DESCRIPTION AND HOW ESTABLISHED \_\_\_\_\_

I hereby declare that this plat, survey or report was made by me or under my direct personal supervision and that I am a duly registered Land Surveyor under the laws of the State of Iowa.

Signed:

*[Signature]* 4-12-05

Joseph D. Tjepkes L.S. Iowa Reg. No. 14807  
My Registration Renewal Date is December 31, 2006

SEAL



J.D. TJEPKES LS 14807  
23428 RIDGE ROAD  
ANAMOSA, IOWA, 52205  
(319-462-3785)

A,