

# SECTION CORNER CERTIFICATE

OF  
 LAND SURVEY MONUMENTS SITUATED IN SECTION 27, TOWNSHIP 84 NORTH,  
 RANGE 4 WEST, OF THE FIFTH PRINCIPAL MERIDIAN, JONES, COUNTY, IOWA.

PREVIOUSLY RECORDED IN BOOK \_\_\_\_\_ AT PAGE \_\_\_\_\_.

FOR RECORDER'S USE

**REASON FOR PREPARING CERTIFICATE:**

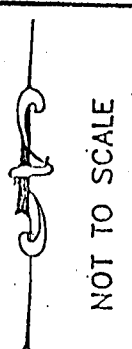
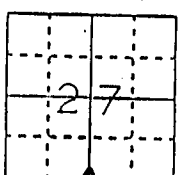
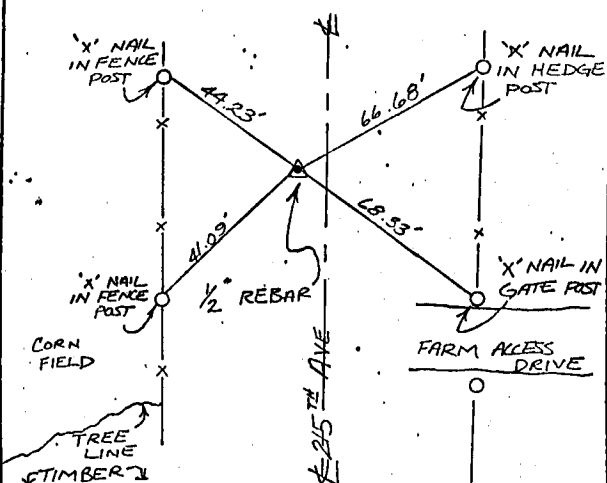
- A) THERE IS NO CERTIFICATE FOR THE CORNER ON FILE WITH THE RECORDER OF THE COUNTY IN WHICH THE CORNER IS LOCATED.
- B) CORNER POSITION DIFFERS FROM THAT SHOWN IN THE PUBLIC RECORDS OF THE COUNTY IN WHICH THE CORNER IS LOCATED.
- C) THE CORNER MONUMENT HAS BEEN REPLACED OR MODIFIED.
- D) THE REFERENCE TIES REFERRED TO IN AN EXISTING PUBLIC RECORD ARE INCORRECT.

**MONUMENT DESCRIPTION AND REMARKS :**

S/4 CORNER SECTION 27-T84N-R4W SET 1/2" REBAR WITH L.S. CAP #8165 9 FEET WEST OF E 215<sup>TH</sup> AVE, 4" DEEP.

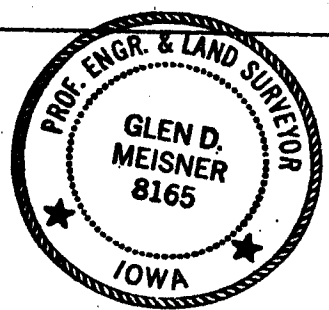
## RECOVERY TIE DRAWING

S 1/4 COR 27-84-4



4-12-94 M.S.

I, Glen D. Meisner, CERTIFY THAT THE CORNER LOCATION(S) SHOWN ON THIS RECORD WERE DETERMINED BY ME OR UNDER MY DIRECTION AND CONTROL AND THAT THIS U.S. PUBLIC LAND SURVEY MONUMENT RECORD IS CORRECT AND COMPLETE TO THE BEST OF MY KNOWLEDGE AND BELIEF.



Glen D. Meisner      3-30-94  
 Glen D. Meisner      L.S. NO 8165      DATE

DZ C S E C T I O N	A GOVERNMENT CORNER O 5/8" TC PIN SET --- CENTERLINE - - - EXISTING FENCE LINE - - - R.O.W. LINE	SHEET NO: U.S. PUBLIC LAND SURVEY RECORD PROJECT NO: DR. FISHER SURVEY	HALL AND HALL ENGINEERS, INC. 226 29TH STREET DRIVE S.E. CEDAR RAPIDS, IOWA 52403 319-362-9548
	DWN MJM      CHK GDM      APP GDM      DATE 7-16-93      SCALE NONE      P. NO. -      P. NO. 4931		

84434c-033094