

2003 FILED 1060

RECORDERS OFFICE  
JONES COUNTY IOWA

03 MAR 13 PM 1:04

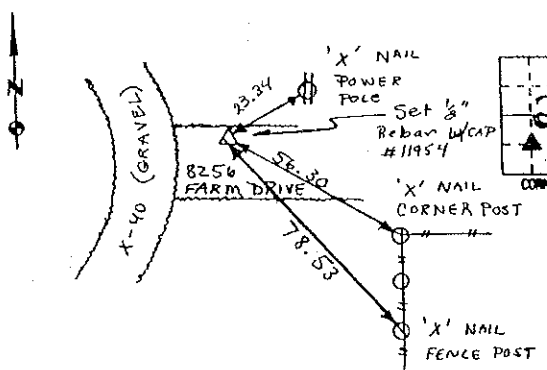
MARIE KRUTZFIELD  
RECORDER 6.00 Pd

PREPARED BY HALL & HALL ENGINEERS, INC. 209 29TH STREET N.E. CEDAR RAPIDS, IOWA 52402 (319) 362-9548

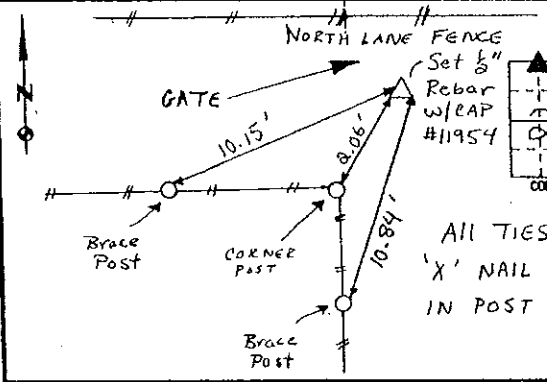
LAND SURVEY MONUMENTS SITUATED IN SECTION 25, TOWNSHIP 84 NORTH,  
RANGE 4 WEST, OF THE FIFTH PRINCIPAL MERIDIAN, JONES COUNTY IOWA.

RECOVERY TIE DRAWING

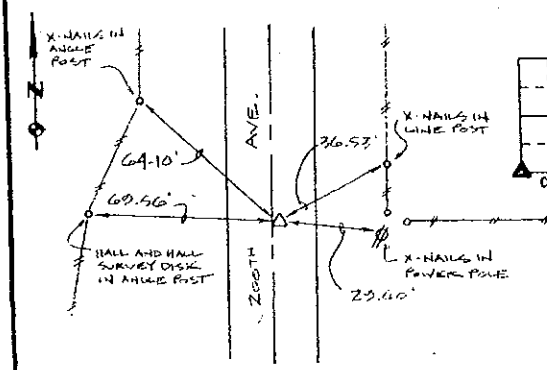
MONUMENT DESCRIPTION AND REMARKS:



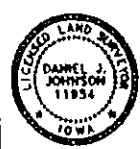
N.W. Cor. - SE 1/4 - SW 1/4 Sec. 25-84-4  
 REASON FOR PREPARING CERTIFICATE: (A) B, C OR D  
 PREVIOUS BOOK \_\_\_\_\_ PAGE \_\_\_\_\_  
 Set 1/2" Rebar w/ RED L.S. CAP  
 #11954 N. Edge of Driveway.



N.E. Corner - NW 1/4 - NW 1/4 Sec. 25-84-4  
 REASON FOR PREPARING CERTIFICATE: (A) B, C OR D  
 PREVIOUS BOOK \_\_\_\_\_ PAGE \_\_\_\_\_  
 Set 1/2" Rebar w/ RED L.S. CAP  
 #11954  
 2' N & 0.5' E of Corner POST.



S.W. CORNER, SECTION 25, T84N, R4W  
 REASON FOR PREPARING CERTIFICATE: (A) B, C OR D  
 PREVIOUS BOOK \_\_\_\_\_ PAGE \_\_\_\_\_  
 FD. S.C.M. 6" DEEP 2' EAST OF  
 & 200TH AVE.



I hereby certify that this land surveying document was prepared and the related survey work was performed by me or under my direct personal supervision and that I am a duly Licensed Land Surveyor under the laws of the State of Iowa.  
 Signed: *Darrel J. Johnson* Date: 3-4-07  
 Darrel J. Johnson, L.S. #11954  
 My license expires on December 31, 2004  
 Pages or sheets covered by this seal: 1  
 (Entire submission unless specified here)

- REASON FOR PREPARING CERTIFICATE:
- A) THERE IS NO CERTIFICATE FOR THE CORNER ON FILE WITH THE RECORDER OF THE COUNTY IN WHICH THE CORNER IS LOCATED.
  - B) CORNER POSITION DIFFERS FROM THAT SHOWN IN THE PUBLIC RECORDS OF THE COUNTY IN WHICH THE CORNER IS LOCATED.
  - C) THE CORNER MONUMENT HAS BEEN REPLACED OR MODIFIED.
  - D) THE REFERENCE TIES REFERRED TO IN AN EXISTING PUBLIC RECORD ARE INCORRECT OR MISSING

SHEET NO. 1 U.S. PUBLIC LAND SURVEY CORNER CERTIFICATE

HALL AND HALL ENGINEERS, INC.  
209 29TH STREET N.E.  
CEDAR RAPIDS, IOWA 52402  
(319) 362-9548

PROJECT NAME: Jones County (Morley)  
 SCALE: NONE  
 COUNTY: County 3  
 SHEET NO.: 6125

SCALE: NONE  
 COUNTY: County 3  
 SHEET NO.: 6125

84425q-081602  
 84425b-081602  
 84435e-081602

2002 3012

FILED  
 RECORDERS OFFICE  
 JONES COUNTY IOWA

02 AUG 16 PM 12:38

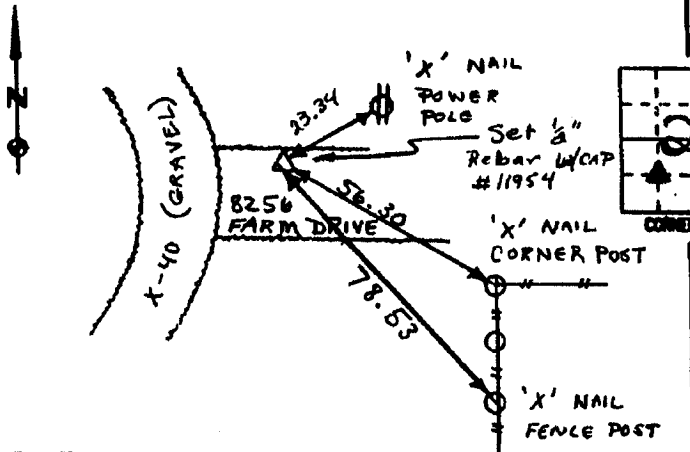
MARIE KRUTZFIELD  
 RECORDER b.c.p.d

PREPARED BY HALL & HALL ENGINEERS, INC. 209 29TH STREET N.E. CEDAR RAPIDS, IOWA 52402 (319) 362-9548

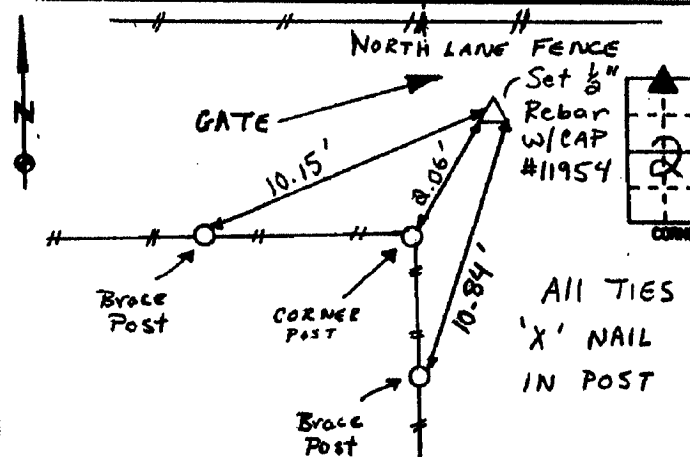
LAND SURVEY MONUMENTS SITUATED IN SECTION 25, TOWNSHIP 84 NORTH,  
 RANGE 4 WEST, OF THE FIFTH PRINCIPAL MERIDIAN, JONES COUNTY IOWA.

RECOVERY TIE DRAWING

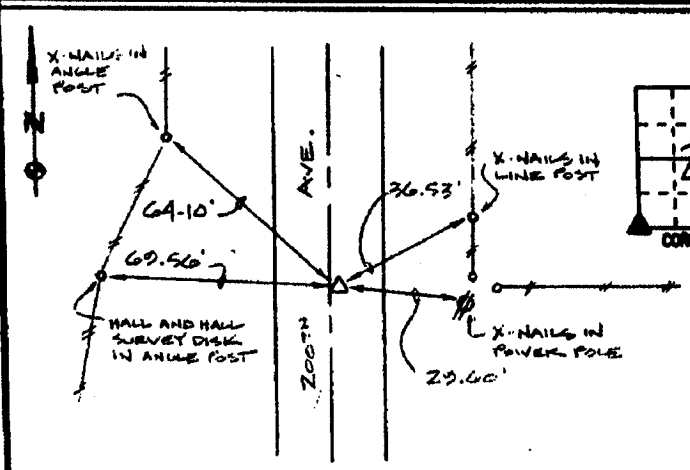
MONUMENT DESCRIPTION AND REMARKS:



NW 1/4 Cor. - SE 1/4 - SW 1/4 Sec. 25-84-4  
 REASON FOR PREPARING CERTIFICATE: (A) B, C OR D  
 PREVIOUS BOOK \_\_\_\_\_, PAGE \_\_\_\_\_  
 Set 1/2" Rebar w/ RED L.S. CAP  
 #11954 N. Edge of Driveway.



NE 1/4 Corner - NW 1/4 - N.W. 1/4 Sec. 25-84-4  
 REASON FOR PREPARING CERTIFICATE: (A) B, C OR D  
 PREVIOUS BOOK \_\_\_\_\_, PAGE \_\_\_\_\_  
 Set 1/2" Rebar w/ RED L.S. CAP  
 #11954  
 2' N & 0.5' E of Corner  
 POST.



S.W. CORNER, SECTION 25, T84N, R4W  
 REASON FOR PREPARING CERTIFICATE: (A) B, C OR D  
 PREVIOUS BOOK \_\_\_\_\_, PAGE \_\_\_\_\_  
 F.D. S.C.M. 6" DEEP 2' EAST OF  
 & 200TH AVE.



I hereby certify that this (land surveying) document was prepared and the related survey work was performed by me or under my direct personal supervision and that I am a duly Licensed Land Surveyor under the laws of the State of Iowa.  
 Signed: Daniel Johnson Date: 8/16/02  
 Daniel J. Johnson, L.S. #11934  
 My License renewal date is December 31, 2002  
 Pages or sheets covered by this seal: (Enter submission unless specified here) 6 of 1

REASON FOR PREPARING CERTIFICATE:  
 A) THERE IS NO CERTIFICATE FOR THE CORNER ON FILE WITH THE RECORDER OF THE COUNTY IN WHICH THE CORNER IS LOCATED.  
 B) CORNER POSITION DIFFERS FROM THAT SHOWN IN THE PUBLIC RECORDS OF THE COUNTY IN WHICH THE CORNER IS LOCATED.  
 C) THE CORNER MONUMENT HAS BEEN REPLACED OR MODIFIED.  
 D) THE REFERENCE TIES REFERRED TO IN AN EXISTING PUBLIC RECORD ARE INCORRECT OR MISSING.

SHEET NO. \_\_\_\_\_ U.S. PUBLIC LAND SURVEY CORNER CERTIFICATE PROJECT NO. Jones County (Morley) HALL AND HALL ENGINEERS, INC. 209 29TH STREET N.E. CEDAR RAPIDS, IOWA 52402 (319) 362-9548

CORNER NO. ACM REG. NO. \_\_\_\_\_ APP. DATE 5/5/00 SCALE NONE P. NO. County 3 P. NO. 6125

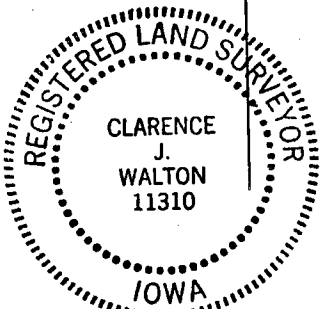
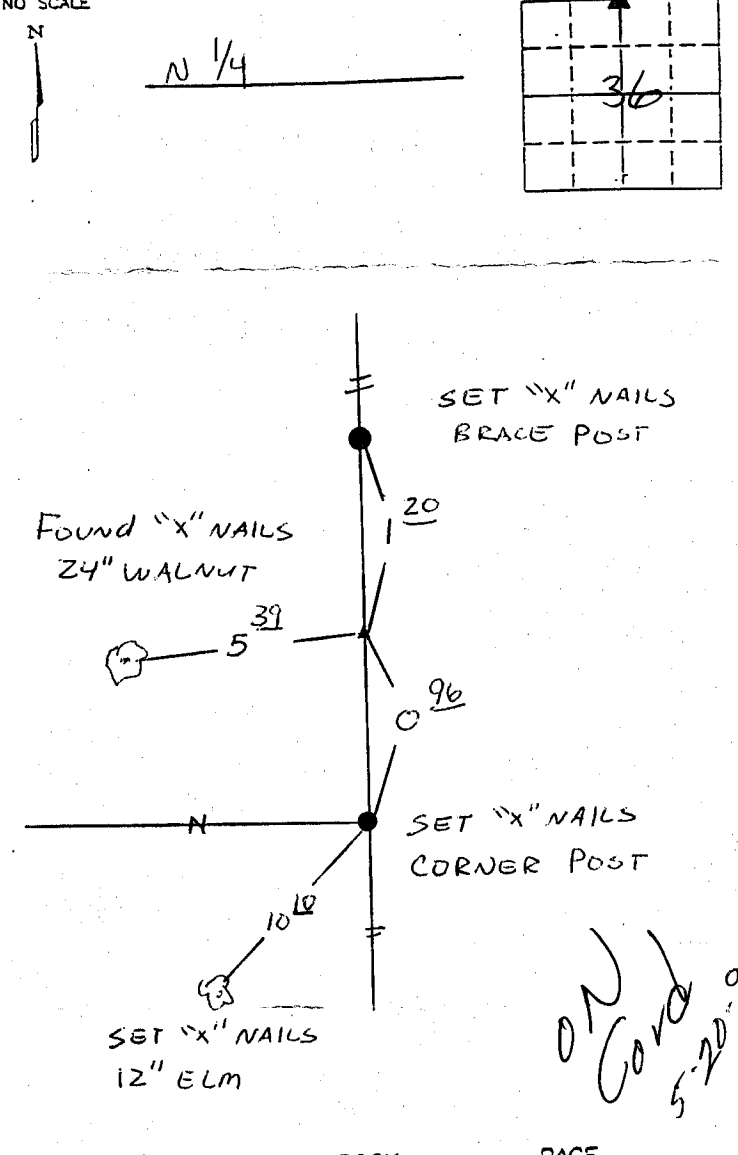
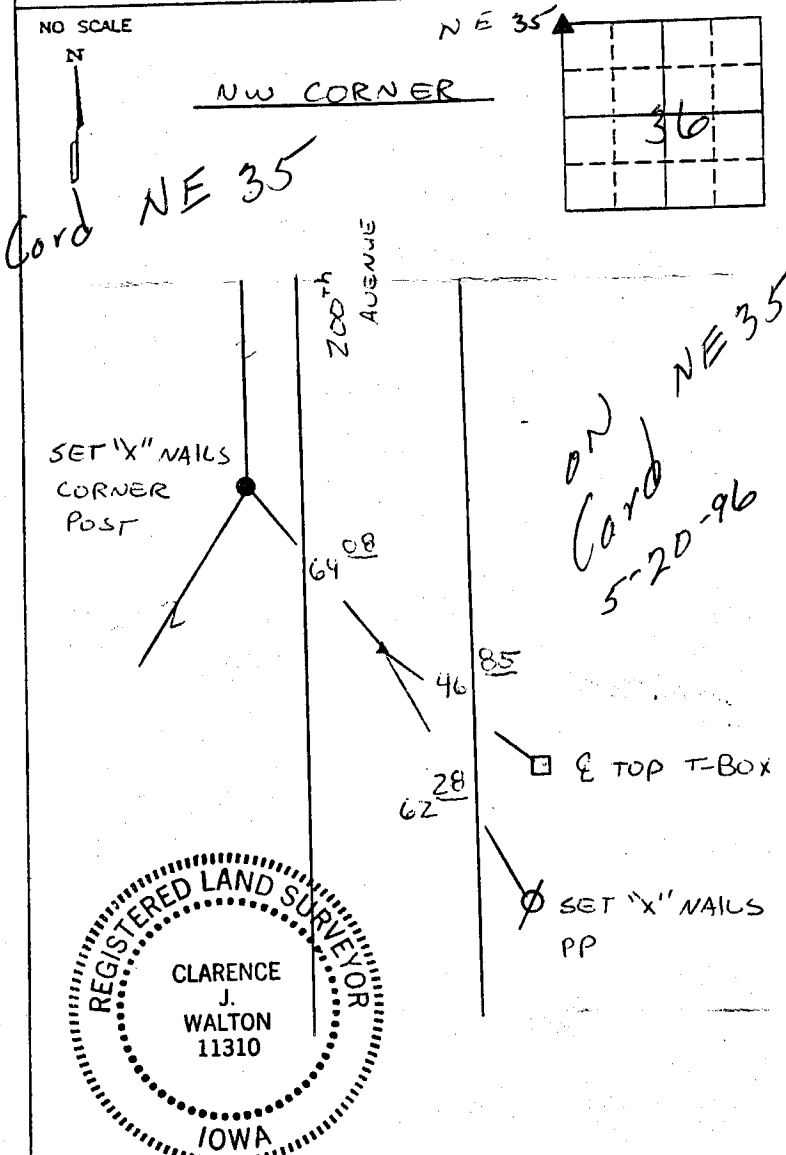
# UNITED STATES PUBLIC LAND SURVEY CORNER CERTIFICATE

*Fairview*

LAND SURVEY MONUMENTS SITUATED IN SECTION 36, TOWNSHIP 84 NORTH  
 RANGE 4 WEST OF THE 5TH P.M., JONES COUNTY, IOWA.

NO SCALE

NO SCALE



PREVIOUSLY RECORDED IN BOOK \_\_\_\_\_ PAGE \_\_\_\_\_  
 MONUMENT DESCRIPTION AND HOW ESTABLISHED \_\_\_\_\_  
Found scm 6" DEEP

PREVIOUSLY RECORDED IN BOOK \_\_\_\_\_ PAGE \_\_\_\_\_  
 MONUMENT DESCRIPTION AND HOW ESTABLISHED \_\_\_\_\_  
Found scm

I hereby certify that this plat, survey or report was made by me or under my direct personal supervision and that I am a duly registered Land Surveyor under the laws of the State of Iowa.  
 Signed Clarence J. Walton Date 12/11/95  
 Clarence J. Walton, L.S. Iowa Reg No. 11310  
 My Registration Renewal Date is December 31, 1995

CORNERS TO BE INDEXED			
CORNER	SECTION	TOWNSHIP	RANGE
NW CORNER	36	84	4
N 1/4	36	84	4

**BRAIN ENGINEERING, INC.**  
 700 11TH STREET, SUITE 201  
 MARION, IOWA 52302  
 (319) 373-1318

16175... 244360-121195

84436c-121195

# UNITED STATES PUBLIC LAND SURVEY CORNER CERTIFICATE OF

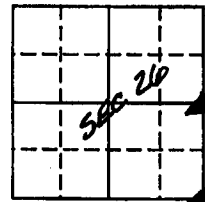
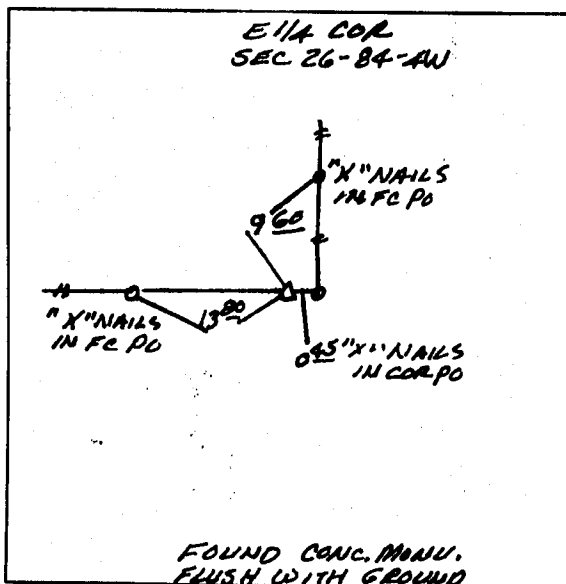
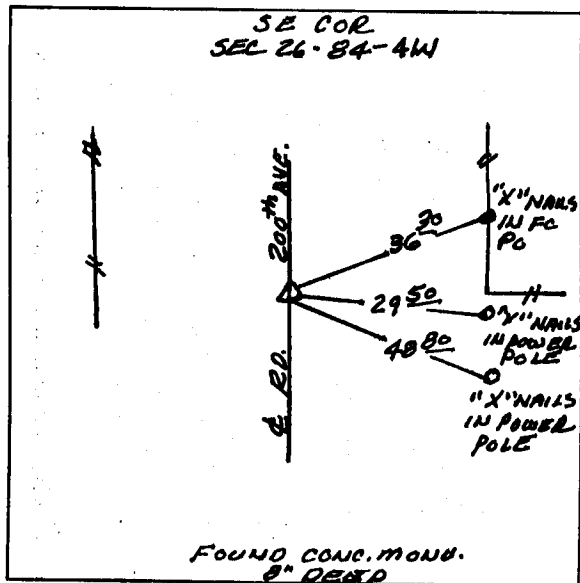
LAND SURVEY MONUMENTS SITUATED IN SECTION 26, TOWNSHIP 84 NORTH, RANGE 4 WEST, OF THE 5TH PRINCIPAL MERIDIAN JONES COUNTY IOWA.  
PREVIOUSLY RECORDED IN BOOK 334 PAGE 260 IN COUNTY RECORDER'S OFFICE.  
(book, page, document number, etc.)

(Show reason for preparing this certificate, the evidence and detailed procedures used in establishing the corner positions and monumentation found or placed.)

MONUMENT DESCRIPTION AND REMARKS: FOUND CONC. MONU'S IN PLACE AT THE E 1/4 COR AND THE SE COR.

## PLAN - VIEW

(Show a minimum of three reference ties to durable physical objects, relevant monuments and physical conditions that will enable recovery of the corner.)



ON CARD 12-8-94 M.S.

I HEREBY CERTIFY THAT THIS LAND SURVEYING DOCUMENT WAS PREPARED BY ME OR UNDER MY DIRECT PERSONAL SUPERVISION AND AND THAT I AM A DULY REGISTERED LAND SURVEYOR UNDER THE LAWS OF THE STATE OF IOWA.

SIGNATURE: Larry R. McGuire  
NAME: LARRY R. MCGUIRE  
DATE: 7/15/94 REG. NO. 9019  
(MONTH, DAY, YEAR)  
MY REGISTRATION EXPIRES DECEMBER 31, 1994

### LAND CORNERS TO BE RECORDED

Corners	Section	Twp.	Range
SE COR	26	84	4W
E 1/4 COR	26	84	4W



844260-071594  
84435e-071594

# UNITED STATES PUBLIC LAND SURVEY CORNER CERTIFICATE OF

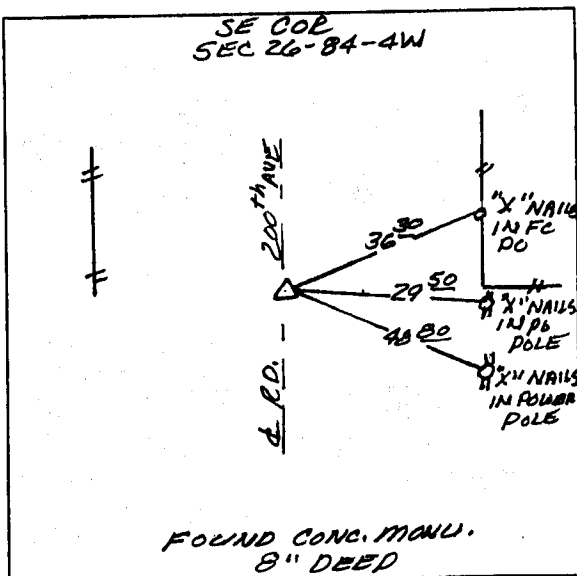
LAND SURVEY MONUMENTS SITUATED IN SECTION 26, TOWNSHIP 84 NORTH, RANGE 4 WEST, OF THE 5TH PRINCIPAL MERIDIAN JONES COUNTY IOWA.  
PREVIOUSLY RECORDED IN DOES NOT APPLY IN COUNTY RECORDER'S OFFICE.  
(book, page, document number, etc.)

(Show reason for preparing this certificate, the evidence and detailed procedures used in establishing the corner positions and monumentation found or placed.)

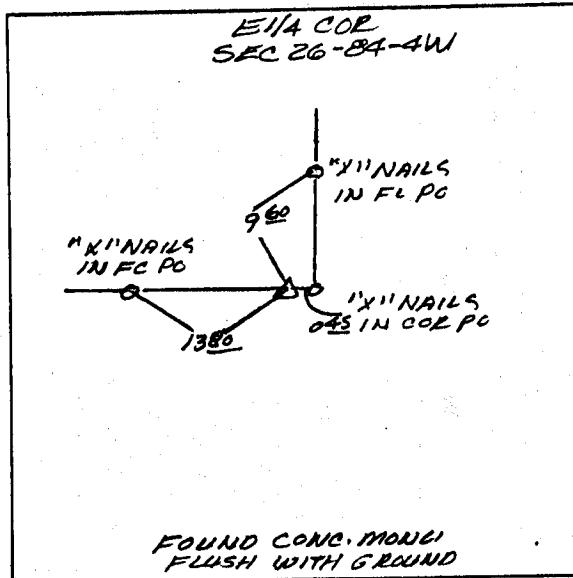
MONUMENT DESCRIPTION AND REMARKS: FOUND CONC MONU'S IN PLACE AT THE E 1/4 COR AND THE SE COR

## PLAN - VIEW

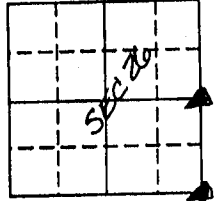
(Show a minimum of three reference ties to durable physical objects, relevant monuments and physical conditions that will enable recovery of the corner.)



ON CAED NE. COR. SEC. 35 11-20-93 M



11-20-93 MS.



I HEREBY CERTIFY THAT THIS LAND SURVEYING DOCUMENT WAS PREPARED BY ME OR UNDER MY DIRECT PERSONAL SUPERVISION AND THAT I AM A DULY REGISTERED LAND SURVEYOR UNDER THE LAWS OF THE STATE OF IOWA.

SIGNATURE: Larry R. McGuire  
NAME: LARRY R. MCGUIRE

DATE: 9/14/93 REG. NO. 9019  
(MONTH, DAY, YEAR)

MY REGISTRATION EXPIRES DECEMBER 31, 1994



LAND CORNERS TO BE RECORDED			
Corners	Section	Twp.	Range
SE COR	26	84	4W
E 1/4 COR	26	84	4W

844260-091493  
844352-091493