

2003 1054

FILED  
RECORDERS OFFICE  
JONES COUNTY IOWA

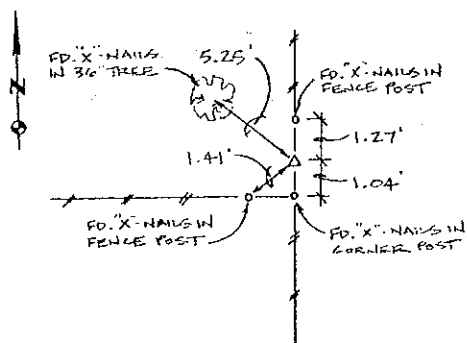
03 MAR 13 PM 12:56

MARIE KRUTZFIELD  
RECORDER 6.00 PL

PREPARED BY HALL & HALL ENGINEERS, INC. 209 29TH STREET N.E. CEDAR RAPIDS, IOWA 52402 (319) 362-9548

LAND SURVEY MONUMENTS SITUATED IN SECTION 25, TOWNSHIP 84 NORTH,  
RANGE 4 WEST, OF THE FIFTH PRINCIPAL MERIDIAN, JONES COUNTY IOWA.

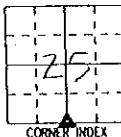
RECOVERY TIE DRAWING



MONUMENT DESCRIPTION AND REMARKS:

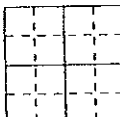
S. 1/4 COR. SECTION 25, T84N. R4W

REASON FOR PREPARING CERTIFICATE: (A) B, C OR D  
PREVIOUS BOOK \_\_\_\_\_, PAGE \_\_\_\_\_  
FD. S.C.M. 1' ABOVE GROUND



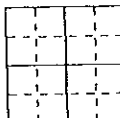
CORNER INDEX

REASON FOR PREPARING CERTIFICATE: A, B, C OR D  
PREVIOUS BOOK \_\_\_\_\_, PAGE \_\_\_\_\_



CORNER INDEX

REASON FOR PREPARING CERTIFICATE: A, B, C OR D  
PREVIOUS BOOK \_\_\_\_\_, PAGE \_\_\_\_\_



CORNER INDEX



I hereby certify that this land surveying document was prepared and the related survey work was performed by me or under my direct personal supervision and that I am a duly licensed Land Surveyor under the laws of the State of Iowa.

Signed: Daniel J. Johnson Date: 2-27-03

Daniel J. Johnson, L.S. 11954  
My license renewal date is December 31, 2004

Pages or sheets covered by this seal:  
(Entire submission unless specified here) 1

REASON FOR PREPARING CERTIFICATE:

- A) THERE IS NO CERTIFICATE FOR THE CORNER ON FILE WITH THE RECORDER OF THE COUNTY IN WHICH THE CORNER IS LOCATED.
- B) CORNER POSITION DIFFERS FROM THAT SHOWN IN THE PUBLIC RECORDS OF THE COUNTY IN WHICH THE CORNER IS LOCATED.
- C) THE CORNER MONUMENT HAS BEEN REPLACED OR MODIFIED.
- D) THE REFERENCE TIES REFERRED TO IN AN EXISTING PUBLIC RECORD ARE INCORRECT OR MISSING.

SHEET TITLE: U.S. PUBLIC LAND SURVEY CORNER CERTIFICATE

PROJECT TITLE: JONES COUNTY X-40

HALL AND HALL ENGINEERS, INC.  
209 29TH STREET N.E.  
CEDAR RAPIDS, IOWA 52402  
(319) 362-9548

PREPARED BY	D W DUK	C H R D J J	A P P D J J	D T E 7/15/02	SCALE: NONE	NO COUNTY 3	PHOTO 6125
-------------	---------	-------------	-------------	---------------	-------------	-------------	------------

2002 3010  
 FILED  
 RECORDERS OFFICE  
 JONES COUNTY IOWA

BA436C-081602

02 AUG 16 PM 12:36

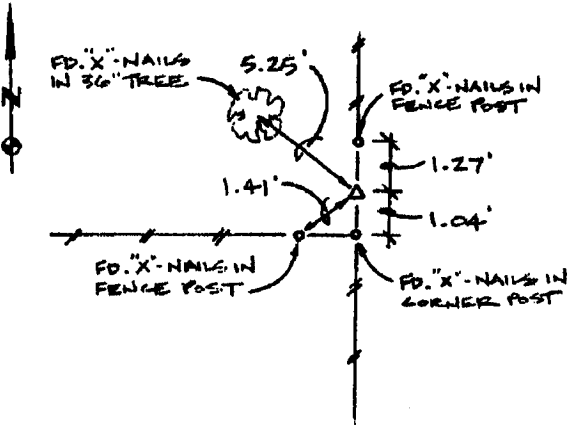
MARIE KRUTZFIELD  
 RECORDER 6.00 pd

PREPARED BY HALL & HALL ENGINEERS, INC. 209 29TH STREET N.E. CEDAR RAPIDS, IOWA 52402 (319) 362-9548

LAND SURVEY MONUMENTS SITUATED IN SECTION 25, TOWNSHIP 84 NORTH,  
 RANGE 4 WEST, OF THE FIFTH PRINCIPAL MERIDIAN, JONES COUNTY IOWA.

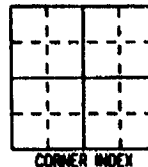
RECOVERY TIE DRAWING

MONUMENT DESCRIPTION AND REMARKS:

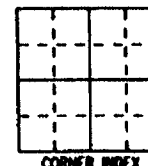
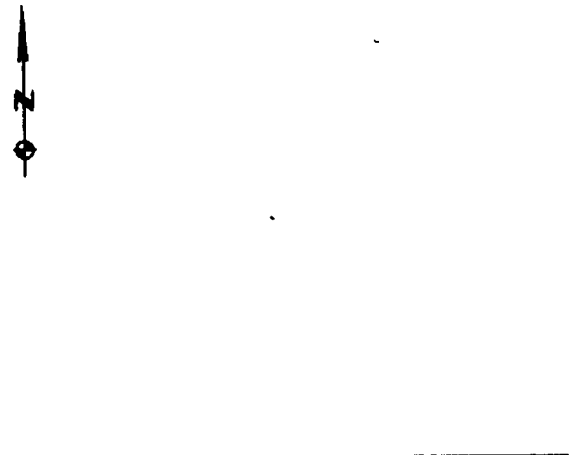


S. 1/4 COR. SECTION 25, T84N, R4W

REASON FOR PREPARING CERTIFICATE: A B, C OR D  
 PREVIOUS BOOK \_\_\_\_\_, PAGE \_\_\_\_\_  
 FD. S.C.M. 1' ABOVE GROUND



REASON FOR PREPARING CERTIFICATE: A, B, C OR D  
 PREVIOUS BOOK \_\_\_\_\_, PAGE \_\_\_\_\_



REASON FOR PREPARING CERTIFICATE: A, B, C OR D  
 PREVIOUS BOOK \_\_\_\_\_, PAGE \_\_\_\_\_



I hereby certify that this land surveying document was prepared and the related survey work was performed by me or under my direct personal supervision and that I am a duly licensed Land Surveyor under the laws of the State of Iowa.

Signature: Daniel J. Johnson Date: 8-16-02

Daniel J. Johnson, L.S., 11954  
 My license renews/ends on December 31, 2002

Pages or sheets covered by this seal:  
 (Entire submission unless specified here) 1 of 1

REASON FOR PREPARING CERTIFICATE:

- A) THERE IS NO CERTIFICATE FOR THE CORNER ON FILE WITH THE RECORDER OF THE COUNTY IN WHICH THE CORNER IS LOCATED.
- B) CORNER POSITION DIFFERS FROM THAT SHOWN IN THE PUBLIC RECORDS OF THE COUNTY IN WHICH THE CORNER IS LOCATED.
- C) THE CORNER MONUMENT HAS BEEN REPLACED OR MODIFIED.
- D) THE REFERENCE TIES REFERRED TO IN AN EXISTING PUBLIC RECORD ARE INCORRECT OR MISSING.

SHEET TITLE: U.S. PUBLIC LAND SURVEY CORNER CERTIFICATE

PROJECT NAME: JONES COUNTY X-40

HALL AND HALL ENGINEERS, INC.  
 209 29TH STREET N.E.  
 CEDAR RAPIDS, IOWA 52402  
 (319) 362-9548

REV	NO DUC	CHK D.J.J.	APP D.J.J.	DATE 7/15/02	SCALE: NONE	FNO COUNTY 3	PNO 00-6125
-----	-----------	---------------	---------------	-----------------	----------------	-----------------	----------------

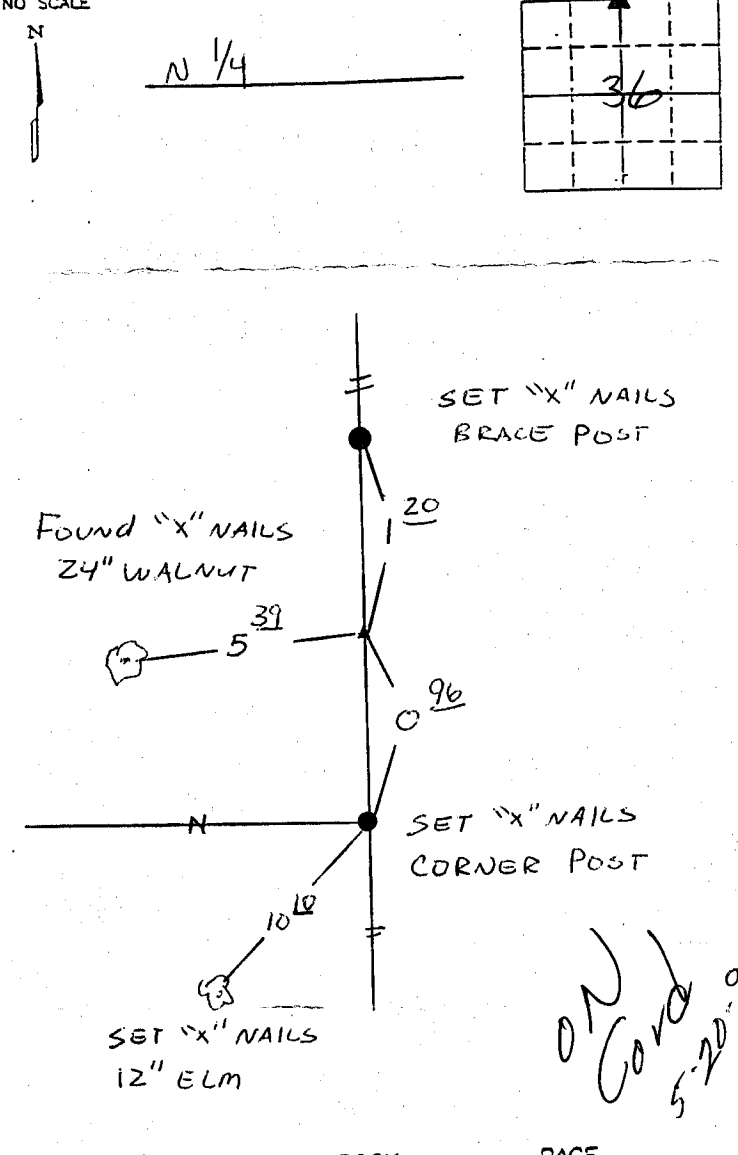
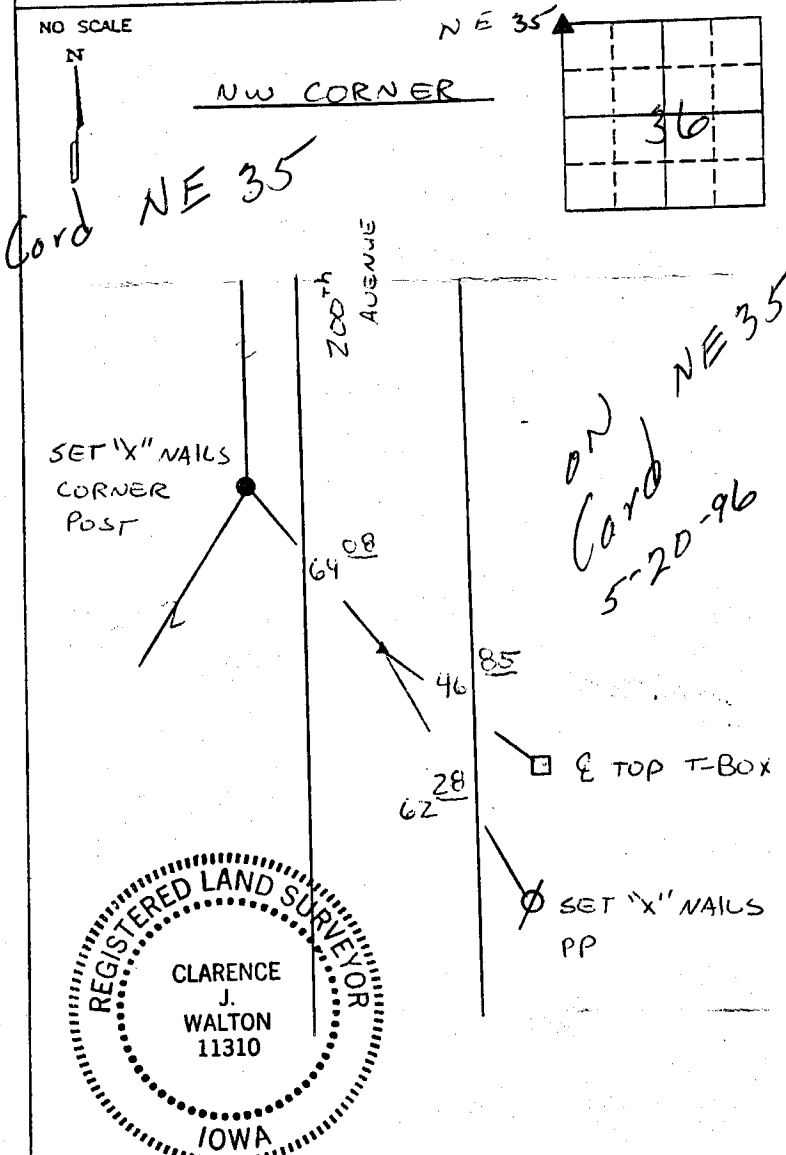
# UNITED STATES PUBLIC LAND SURVEY CORNER CERTIFICATE

*Fairview*

LAND SURVEY MONUMENTS SITUATED IN SECTION 36, TOWNSHIP 84 NORTH  
 RANGE 4 WEST OF THE 5TH P.M., JONES COUNTY, IOWA.

NO SCALE

NO SCALE



PREVIOUSLY RECORDED IN BOOK \_\_\_\_\_ PAGE \_\_\_\_\_  
 MONUMENT DESCRIPTION AND HOW ESTABLISHED \_\_\_\_\_  
Found scm 6" DEEP

PREVIOUSLY RECORDED IN BOOK \_\_\_\_\_ PAGE \_\_\_\_\_  
 MONUMENT DESCRIPTION AND HOW ESTABLISHED \_\_\_\_\_  
Found scm

I hereby certify that this plat, survey or report was made by me or under my direct personal supervision and that I am a duly registered Land Surveyor under the laws of the State of Iowa.

Signed Clarence J. Walton Date 12/11/95  
 Clarence J. Walton, L.S. Iowa Reg No. 11310  
 My Registration Renewal Date is December 31, 1995

CORNERS TO BE INDEXED			
CORNER	SECTION	TOWNSHIP	RANGE
NW CORNER	36	84	4
N 1/4	36	84	4

**BRAIN ENGINEERING, INC.**  
 700 11TH STREET, SUITE 201  
 MARION, IOWA 52302  
 (319) 373-1318

16175 244360-121195

84436c-121195