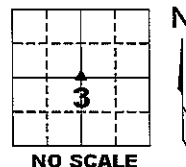


□□ Jones County Marie Krutzfield Recorder
 Fee Book 2011 1441
 06/02/2011 @0152PM # Pages 2
 ZSC SEC COR CERT
 Total Fees: \$0.00

PREPARED BY
 CLARENCE J. WALTON, JONES COUNTY ENGINEER'S OFFICE, 19501 HWY. 64, ANAMOSA, IOWA, 52205 (319) 462-3785

**UNITED STATES PUBLIC LAND
 SURVEY CORNER CERTIFICATE**
**LAND SURVEY MONUMENTS SITUATED IN SECTION 3 , TOWNSHIP 84 NORTH,
 RANGE 4 WEST OF THE 5TH PRINCIPAL MERIDIAN, JONES COUNTY, IOWA.**

CORNER SECTION TOWNSHIP RANGE
 CENTER 3 T84N R4W



**SURVEYOR'S NARRATIVE OF
 MONUMENT DESCRIPTION AND HOW ESTABLISHED**

A 5/8"x12" rebar with an orange plastic cap with #11310 was set 2" below the existing road surface. The rebar went through the top of a corrugated metal pipe which necessitated the use of a shorter than normal rebar.

A roughly, 8"x8"x4" limestone was found was found at the south-west corner of (now vacated) Block 11 of Huber's Subdivision to the Town (now City) of Anamosa as recorded in Book "B", page 57 of Plats in the Jones County, Iowa Recorder's Office.

A 1/2" rebar with a red plastic cap #13842 was found next to an approximately 6"x8"x2" limestone at the south-west corner of Block 14 of Huber's Subdivision. These 2 stones were referred to in a Plat of Survey (Retracement) recorded in Recorder's Document 2009 2962 in the Jones County, Iowa Recorder's Office. The legal description for Huber's Subdivision somewhat infers the west line of Gibb's Street to be the west line of the south-east quarter of Section 3-T84N-R4W. Therefore, the west line of said south-east quarter was established by offsetting the line between the two stones 33 feet (as platted) to the west. To support this decision, a 1/2" rebar was found, 33.40 feet west of the found stone at the south-west corner of the cemetery. With nothing else to hang my hat on, the north lines of the SE 1/4 and the SW 1/4 of said Section 3 was determined by running a straight line between the E 1/4 and W 1/4 corners of said Section 3. The center of said Section 3 was set at the intersection of these 2 lines. The west line of the NE 1/4 goes from this intersection to the N 1/4 of said Section 3. As can be seen there is a bend at the center. However, it is very compelling to use this line as its proximity to a corner post of long standing which apparently represented the north-west corner of Huber's Subdivision. A diligent search was made here but it was apparent that the rubble fill that was placed in this area some time back and made any further searching a fool's errand.

JONES COUNTY ENGINEER'S OFFICE



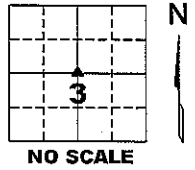
19501 HWY. 64, ANAMOSA, IOWA 52205
 (319) 462-3785

UNITED STATES PUBLIC LAND SURVEY CORNER CERTIFICATE

LAND SURVEY MONUMENTS SITUATED IN SECTION 3, TOWNSHIP 84 NORTH,
 RANGE 4 WEST OF THE 5TH PRINCIPAL MERIDIAN, JONES COUNTY, IOWA.

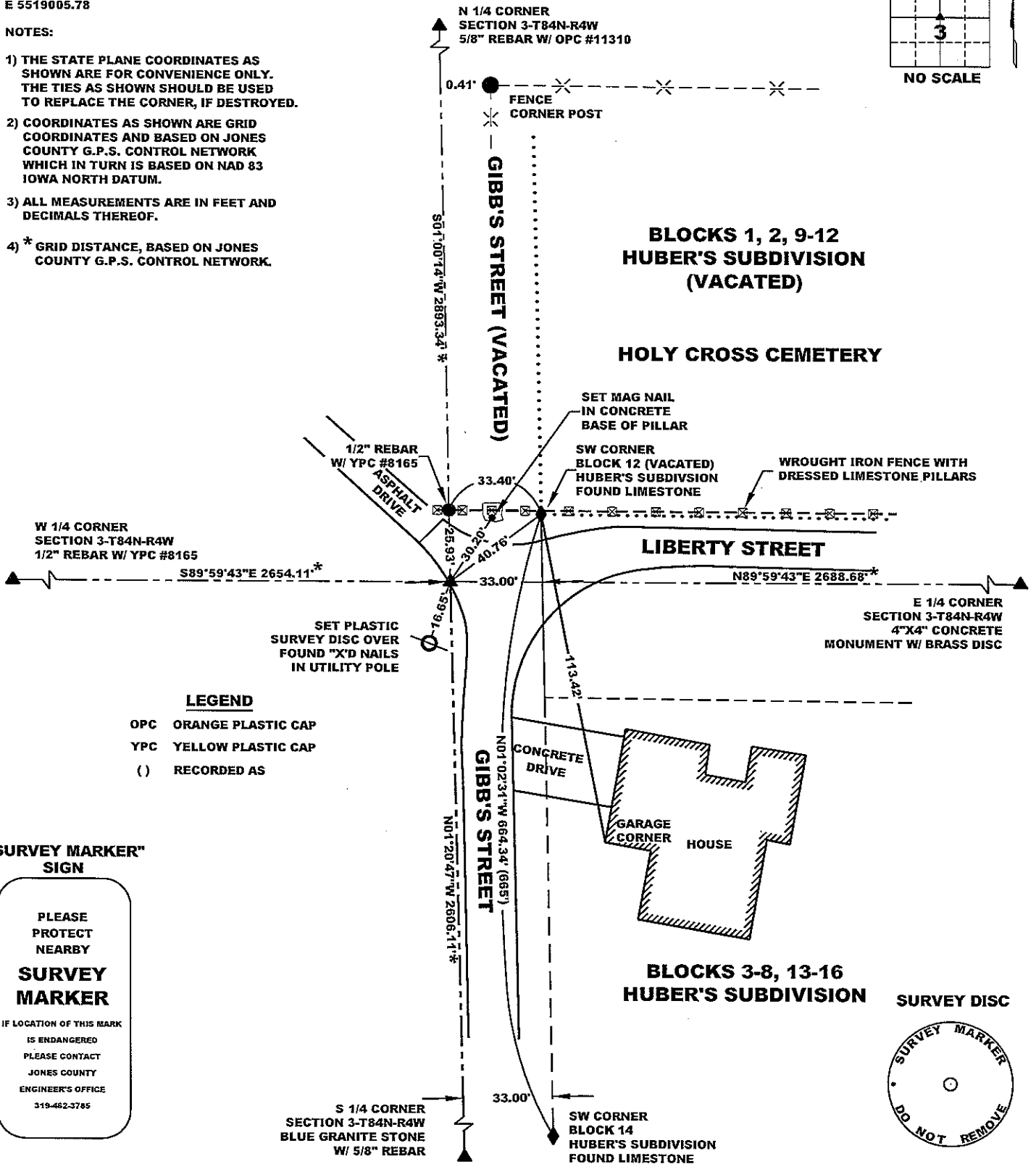
STATE PLANE COORDINATE
 NAD 83 IOWA NORTH
 N 3512362.89
 E 5519005.78

CORNER SECTION TOWNSHIP RANGE
 CENTER 3 T84N R4W



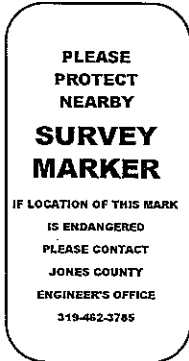
NOTES:

- 1) THE STATE PLANE COORDINATES AS SHOWN ARE FOR CONVENIENCE ONLY. THE TIES AS SHOWN SHOULD BE USED TO REPLACE THE CORNER, IF DESTROYED.
- 2) COORDINATES AS SHOWN ARE GRID COORDINATES AND BASED ON JONES COUNTY G.P.S. CONTROL NETWORK WHICH IN TURN IS BASED ON NAD 83 IOWA NORTH DATUM.
- 3) ALL MEASUREMENTS ARE IN FEET AND DECIMALS THEREOF.
- 4) * GRID DISTANCE, BASED ON JONES COUNTY G.P.S. CONTROL NETWORK.



- LEGEND**
- OPC ORANGE PLASTIC CAP
 - YPC YELLOW PLASTIC CAP
 - () RECORDED AS

"SURVEY MARKER" SIGN



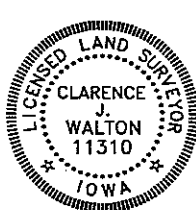
SURVEY DISC



PREVIOUSLY RECORDED IN BOOK 314, PAGE 346
 MONUMENT DESCRIPTION AND HOW ESTABLISHED NARRATIVE WILL BE FOUND ON PAGE 1.

PAGE 2 of 2

FIELD BOOK 333, PAGE 75. DATE OF SURVEY: 5/23/11



I hereby certify that this land surveying document and the related survey work was performed by me or under my direct personal supervision and that I am a duly registered Land Surveyor under the laws of the State of Iowa.
 Signed: *Clarence J. Walton* 6/3/11
 Clarence J. Walton, L.S.
 My Registration Renewal Date is December 31, 2011
 Iowa License Number 11310
 Pages or sheets covered by this seal: Pages 1 & 2 of 2.

- A. THERE IS NO CERTIFICATE FOR THE CORNER ON FILE WITH THE RECORDER OF THE COUNTY IN WHICH THE CORNER IS LOCATED.
- B. THE CORNER MONUMENT HAS BEEN REPLACED OR MODIFIED.
- C. THE SURVEYOR IN RESPONSIBLE CHARGE OF THE LAND SURVEYING ACCEPTS A CORNER POSITION THAT DIFFERS FROM THAT SHOWN IN THE PUBLIC RECORDS OF THE COUNTY IN WHICH THE CORNER IS LOCATED.
- D. THE REFERENCE TIES REFERRED TO IN AN EXISTING PUBLIC RECORD NO LONGER EXIST.
- E. EXISTING CORNER TIES UPDATED.

CORNERS TO BE INDEXED

CORNER	SECTION	TOWNSHIP	RANGE
CENTER	3	84N	4W

JONES COUNTY ENGINEER'S OFFICE



19501 HWY. 64, ANAMOSA, IOWA 52205
 (319) 462-3785