

Number: 2026-1571  
 Recorded: 5/28/2026 at 9:12:09.0 AM  
 County Recording Fee: \$7.00  
 Iowa E-Filing Fee: \$3.13  
 Combined Fee: \$10.13  
 Revenue Tax:  
 Sheri L. Jones RECORDER  
 Jones County, Iowa

PREPARED BY & RETURN TO: MICHAEL A. BROONER CIVIL DESIGN ADVANTAGE  
 4121 NW URBANDALE DRIVE URBANDALE, IOWA 50322 PH: 515-369-4400 FAX: 515-369-4410

## UNITED STATES PUBLIC LAND SURVEY CORNER CERTIFICATE OF

Land Survey Monuments situated in Section 3, Township 84N, Range 4W, of the  
 Fifth Principal Meridian, JONES County, Iowa.  
 Previously recorded in BK 2011 PG 1441 in County Recorder's Office.

**Monument Description and Remarks:**

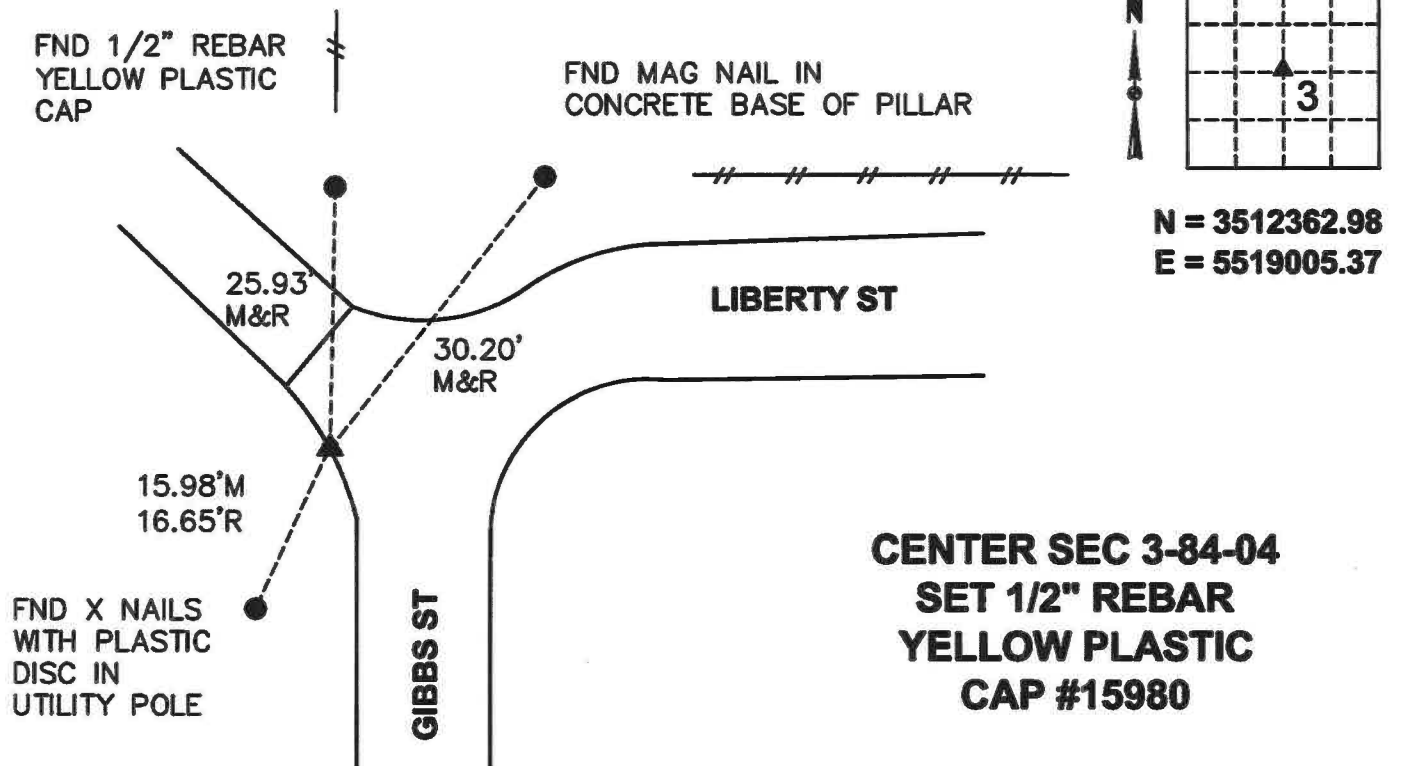
- THERE IS NO CERTIFICATE FOR THE CORNER ON FILE WITH THE RECORDER OF THE COUNTY IN WHICH THE CORNER IS LOCATED.
- THE SURVEYOR IN RESPONSIBLE CHARGE OF THE LAND SURVEYING ACCEPTS A CORNER POSITION WHICH DIFFERS FROM THAT SHOWN IN THE PUBLIC RECORDS OF THE COUNTY IN WHICH THE CORNER IS LOCATED.
- THE CORNER MONUMENT IS REPLACED OR MODIFIED IN ANY WAY.
- THE REFERENCE TIES IN AN EXISTING PUBLIC RECORD ARE INCORRECT OR MISSING.

**CENTER SECTION 3-84-04. SET 1/2" REBAR WITH YELLOW PLASTIC CAP #15980 FROM EXISTING TIES AND COORDINATES.**

**SET NEW TIES AND USED FOR PLAT OF SURVEY.**

### PLAN VIEW

(Show a minimum of three reference ties to durable physical objects, relevant monuments and physical conditions that will enable recovery of the corner.)



**CENTER SEC 3-84-04  
SET 1/2" REBAR  
YELLOW PLASTIC  
CAP #15980**



I HEREBY CERTIFY THAT THIS LAND SURVEYING DOCUMENT WAS PREPARED AND THE RELATED SURVEYING WORK WAS PERFORMED BY ME OR UNDER MY DIRECT SUPERVISION AND THAT I AM A DULY LICENSED LAND SURVEYOR UNDER THE LAWS OF THE STATE OF IOWA.

*Michael Brooner*

5-27-2026

MICHAEL A. BROONER, P.L.S. DATE

LICENSE NUMBER 15980  
 MY LICENSE RENEWAL DATE IS DECEMBER 31, 2026.  
 CERTIFICATION COVERS THIS SHEET ONLY:

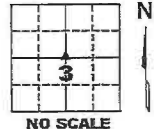
List Corners to be Indexed			
Corners	Section	Twp	Range
CENTER	03	84	04

☐ Jones County Marie Krutzfield Recorder  
Fee Book 2011 1441  
06/02/2011 @0152PM # Pages 2  
ZSC SEC COR CERT  
Total Fees: \$0.00

PREPARED BY  
CLARENCE J. WALTON, JONES COUNTY ENGINEER'S OFFICE, 19501 HWY. 64, ANAMOSA, IOWA, 52205 (319) 462-3785

**UNITED STATES PUBLIC LAND  
SURVEY CORNER CERTIFICATE**  
LAND SURVEY MONUMENTS SITUATED IN SECTION 3, TOWNSHIP 84 NORTH,  
RANGE 4 WEST OF THE 5TH PRINCIPAL MERIDIAN, JONES COUNTY, IOWA.

CORNER SECTION TOWNSHIP RANGE  
CENTER 3 T84N R4W



**SURVEYOR'S NARRATIVE OF  
MONUMENT DESCRIPTION AND HOW ESTABLISHED**

A 5/8"x12" rebar with an orange plastic cap with #11310 was set 2" below the existing road surface. The rebar went through the top of a corrugated metal pipe which necessitated the use of a shorter than normal rebar.

A roughly, 8"x8"x4" limestone was found at the south-west corner of (now vacated) Block 11 of Huber's Subdivision to the Town (now City) of Anamosa as recorded in Book "B", page 57 of Plats in the Jones County, Iowa Recorder's Office.

A 1/2" rebar with a red plastic cap #13842 was found next to an approximately 6"x8"x2" limestone at the south-west corner of Block 14 of Huber's Subdivision. These 2 stones were referred to in a Plat of Survey (Retracement) recorded in Recorder's Document 2009 2962 in the Jones County, Iowa Recorder's Office. The legal description for Huber's Subdivision somewhat infers the west line of Gibb's Street to be the west line of the south-east quarter of Section 3-T84N-R4W. Therefore, the west line of said south-east quarter was established by offsetting the line between the two stones 33 feet (as platted) to the west. To support this decision, a 1/2" rebar was found, 33.40 feet west of the found stone at the south-west corner of the cemetery. With nothing else to hang my hat on, the north lines of the SE 1/4 and the SW 1/4 of said Section 3 was determined by running a straight line between the E 1/4 and W 1/4 corners of said Section 3. The center of said Section 3 was set at the intersection of these 2 lines. The west line of the NE 1/4 goes from this intersection to the N 1/4 of said Section 3. As can be seen there is a bend at the center. However, it is very compelling to use this line as its proximity to a corner post of long standing which apparently represented the north-west corner of Huber's Subdivision. A diligent search was made here but it was apparent that the rubble fill that was placed in this area some time back and made any further searching a fool's errand.

**JONES COUNTY ENGINEER'S OFFICE**

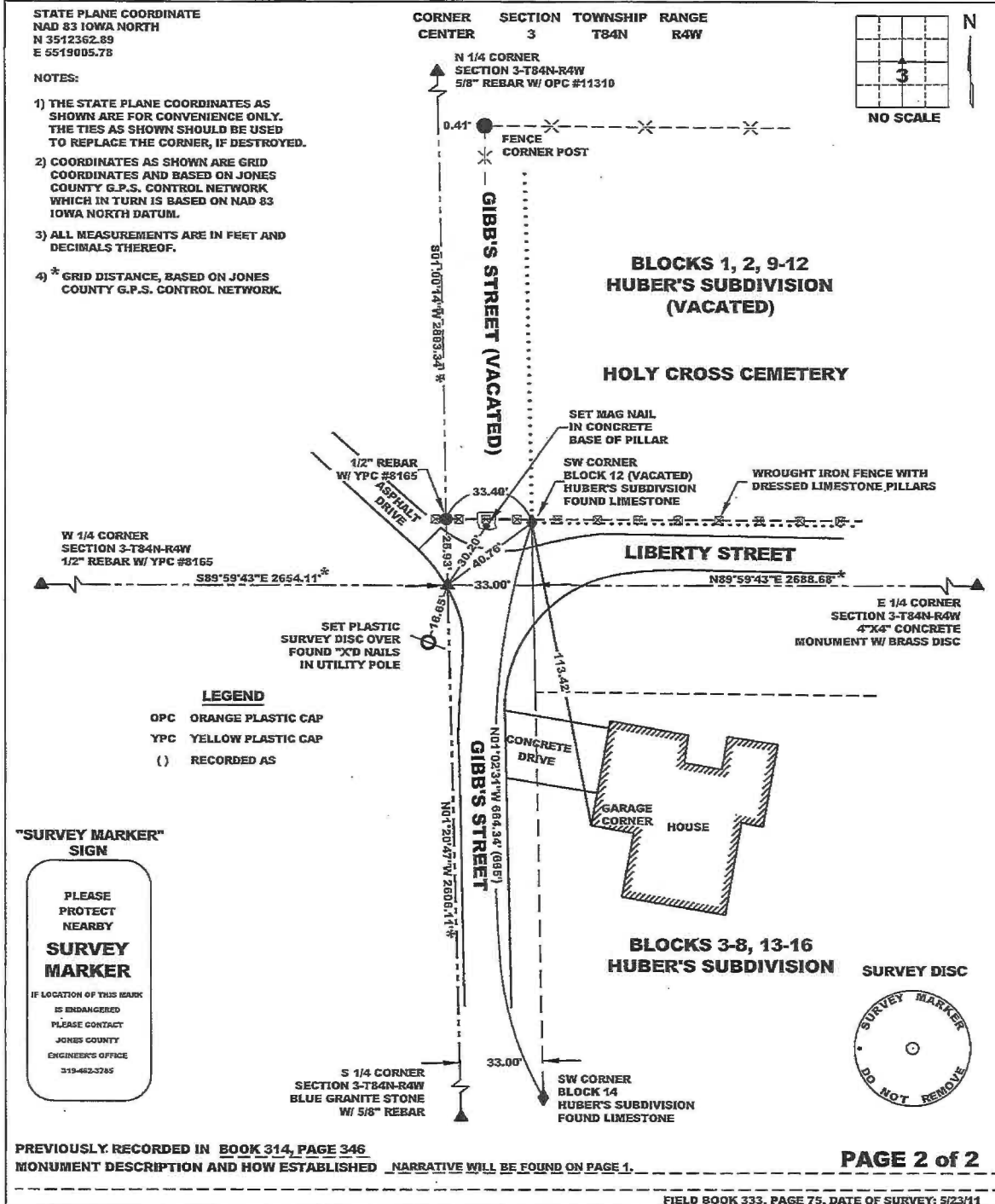


19501 HWY. 64, ANAMOSA, IOWA 52205  
(319) 462-3785

**PAGE 1 of 2**

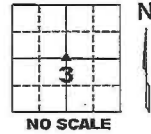
# UNITED STATES PUBLIC LAND SURVEY CORNER CERTIFICATE

LAND SURVEY MONUMENTS SITUATED IN SECTION 3, TOWNSHIP 84 NORTH,  
 RANGE 4 WEST OF THE 5TH PRINCIPAL MERIDIAN, JONES COUNTY, IOWA.



STATE PLANE COORDINATE  
 NAD 83 IOWA NORTH  
 N 3512362.89  
 E 5519005.78

CORNER SECTION TOWNSHIP RANGE  
 CENTER 3 T84N R4W



- NOTES:
- 1) THE STATE PLANE COORDINATES AS SHOWN ARE FOR CONVENIENCE ONLY. THE TIES AS SHOWN SHOULD BE USED TO REPLACE THE CORNER, IF DESTROYED.
  - 2) COORDINATES AS SHOWN ARE GRID COORDINATES AND BASED ON JONES COUNTY G.P.S. CONTROL NETWORK WHICH IN TURN IS BASED ON NAD 83 IOWA NORTH DATUM.
  - 3) ALL MEASUREMENTS ARE IN FEET AND DECIMALS THEREOF.
  - 4) \* GRID DISTANCE, BASED ON JONES COUNTY G.P.S. CONTROL NETWORK.

**LEGEND**  
 OPC ORANGE PLASTIC CAP  
 YPC YELLOW PLASTIC CAP  
 ( ) RECORDED AS

**"SURVEY MARKER" SIGN**

PLEASE PROTECT NEARBY  
**SURVEY MARKER**

IF LOCATION OF THIS MARK IS ENDANGERED PLEASE CONTACT JONES COUNTY ENGINEER'S OFFICE 319-462-3785

PREVIOUSLY RECORDED IN BOOK 314, PAGE 346 **PAGE 2 of 2**  
 MONUMENT DESCRIPTION AND HOW ESTABLISHED NARRATIVE WILL BE FOUND ON PAGE 1.



I hereby certify that this land surveying document and the related survey work was performed by me or under my direct personal supervision and that I am a duly registered Land Surveyor under the laws of the State of Iowa.  
 Signed: *Clarence J. Walton* 6/3/11  
 Clarence J. Walton, L.S.  
 My Registration Renewal Date is December 31, 2011  
 Iowa License Number 11310  
 Pages or sheets covered by this seat: Pages 1 & 2 of 2.

- FIELD BOOK 333, PAGE 75. DATE OF SURVEY: 5/23/11
- A. THERE IS NO CERTIFICATE FOR THE CORNER ON FILE WITH THE RECORDER OF THE COUNTY IN WHICH THE CORNER IS LOCATED.
  - B. THE CORNER MONUMENT HAS BEEN REPLACED OR MODIFIED.
  - C. THE SURVEYOR IN RESPONSIBLE CHARGE OF THE LAND SURVEYING ACCEPTS A CORNER POSITION THAT DIFFERS FROM THAT SHOWN IN THE PUBLIC RECORDS OF THE COUNTY IN WHICH THE CORNER IS LOCATED.
  - D. THE REFERENCE TIES REFERRED TO IN AN EXISTING PUBLIC RECORD NO LONGER EXIST.
  - E. EXISTING CORNER TIES UPDATED.

**CORNERS TO BE INDEXED**

CORNER	SECTION	TOWNSHIP	RANGE
CENTER	3	84N	4W

**JONES COUNTY ENGINEER'S OFFICE**

19501 HWY. 64, ANAMOSA, IOWA 52205  
 (319) 462-3785