

Jones County Marie Krutzfield Recorder
 Fee Book 2011 1440
 06/02/2011 @0151PM # Pages 1
 ZSC SEC COR CERT
 Total Fees: \$0.00

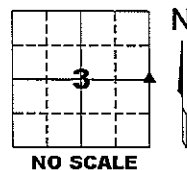
PREPARED BY
 CLARENCE J. WALTON, JONES COUNTY ENGINEER'S OFFICE, 19501 HWY. 64, ANAMOSA, IOWA, 52205 (319) 462-3785

UNITED STATES PUBLIC LAND SURVEY CORNER CERTIFICATE

LAND SURVEY MONUMENTS SITUATED IN SECTION 3, TOWNSHIP 84 NORTH,
 RANGE 4 WEST OF THE 5TH PRINCIPAL MERIDIAN, JONES COUNTY, IOWA.

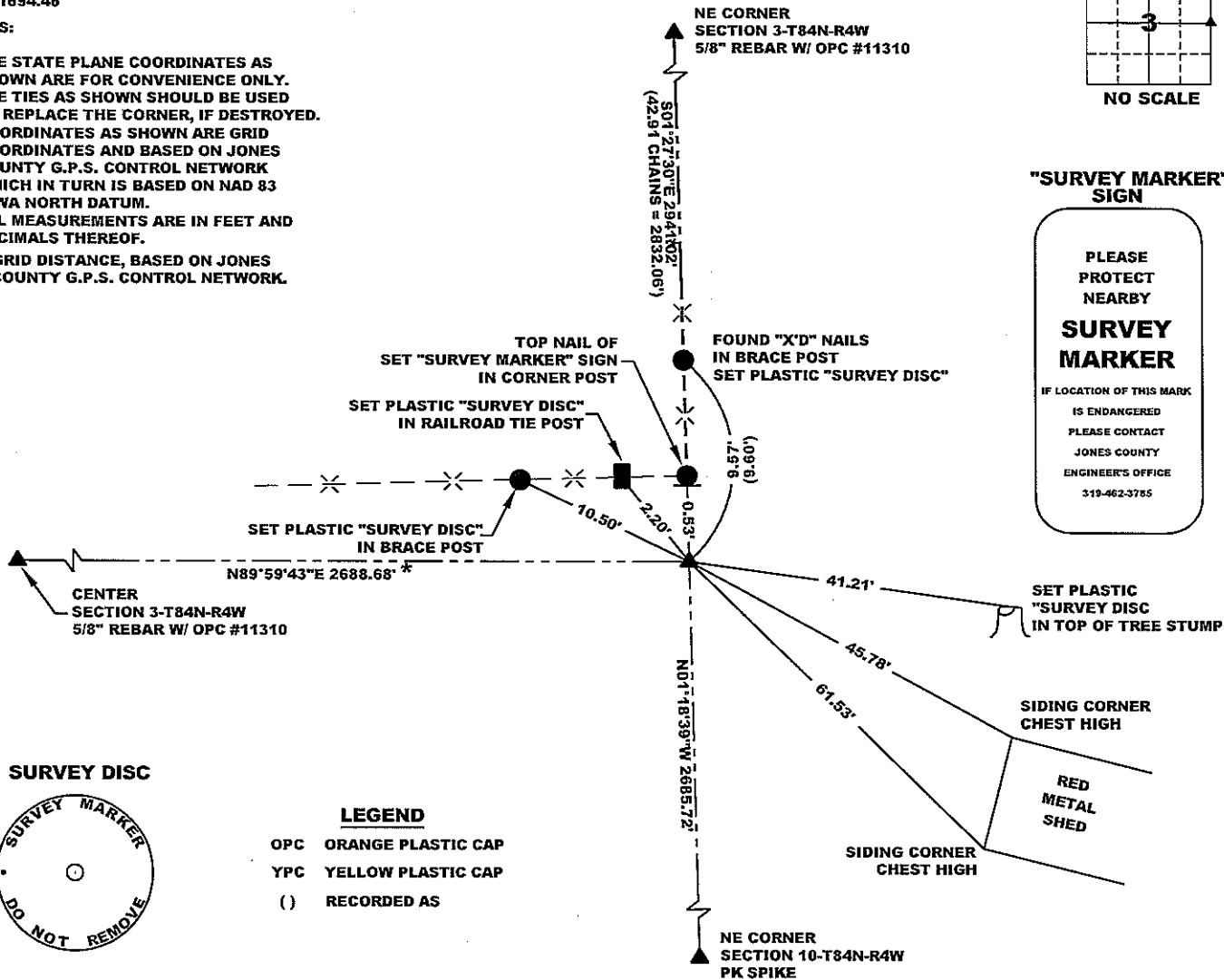
STATE PLANE COORDINATE
 NAD 83 IOWA NORTH
 N 3512362.67
 E 5521694.46

CORNER SECTION TOWNSHIP RANGE
 E 1/4 CORNER 3 T84N R4W



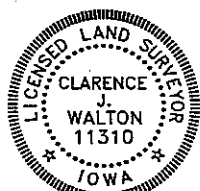
NOTES:

- 1) THE STATE PLANE COORDINATES AS SHOWN ARE FOR CONVENIENCE ONLY. THE TIES AS SHOWN SHOULD BE USED TO REPLACE THE CORNER, IF DESTROYED.
- 2) COORDINATES AS SHOWN ARE GRID COORDINATES AND BASED ON JONES COUNTY G.P.S. CONTROL NETWORK WHICH IN TURN IS BASED ON NAD 83 IOWA NORTH DATUM.
- 3) ALL MEASUREMENTS ARE IN FEET AND DECIMALS THEREOF.
- 4) * GRID DISTANCE, BASED ON JONES COUNTY G.P.S. CONTROL NETWORK.



PREVIOUSLY RECORDED IN BOOK 314, PAGE 346
 MONUMENT DESCRIPTION AND HOW ESTABLISHED PER CORNER CERTIFICATE OF RECORD, FOUND 4"x4" CONCRETE MONUMENT W/ BRASS DISC 2" BELOW PRESENT GROUND SURFACE. SET "SURVEY MARKER" SIGN ON CORNER POST (SHOWN) AS WITNESS TO MONUMENT.

FIELD BOOK 333, PAGE 79. DATE OF SURVEY: 4/12/11



I hereby certify that this land surveying document and the related survey work was performed by me or under my direct personal supervision and that I am a duly registered Land Surveyor under the laws of the State of Iowa.
 Signed: *Clarence J. Walton* 6/3/11
 Clarence J. Walton, L.S.
 My Registration Renewal Date is December 31, 2011
 Iowa License Number 11310
 Pages or sheets covered by this seal: Page 1 of 1.

- A. THERE IS NO CERTIFICATE FOR THE CORNER ON FILE WITH THE RECORDER OF THE COUNTY IN WHICH THE CORNER IS LOCATED.
- B. THE CORNER MONUMENT HAS BEEN REPLACED OR MODIFIED.
- C. THE SURVEYOR IN RESPONSIBLE CHARGE OF THE LAND SURVEYING ACCEPTS A CORNER POSITION THAT DIFFERS FROM THAT SHOWN IN THE PUBLIC RECORDS OF THE COUNTY IN WHICH THE CORNER IS LOCATED.
- D. THE REFERENCE TIES REFERRED TO IN AN EXISTING PUBLIC RECORD NO LONGER EXIST.
- E. EXISTING CORNER TIES UPDATED.

CORNERS TO BE INDEXED

CORNER	SECTION	TOWNSHIP	RANGE
E 1/4 CORNER	3	84N	4W
W 1/4 CORNER	2	84N	4W

JONES COUNTY ENGINEER'S OFFICE



19501 HWY. 64, ANAMOSA, IOWA 52205
 (319) 462-3785

SECTION CORNER CERTIFICATE

OF
 LAND SURVEY MONUMENTS SITUATED IN SECTION 3, TOWNSHIP 84 NORTH,
 RANGE 4 WEST, OF THE FIFTH PRINCIPAL MERIDIAN, JONES, COUNTY, IOWA.

PREVIOUSLY RECORDED IN BOOK _____ AT PAGE _____

FOR RECORDER'S USE

REASON FOR PREPARING CERTIFICATE:

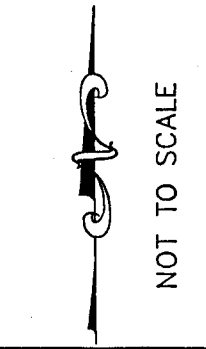
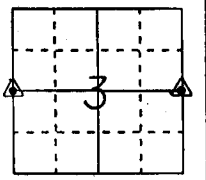
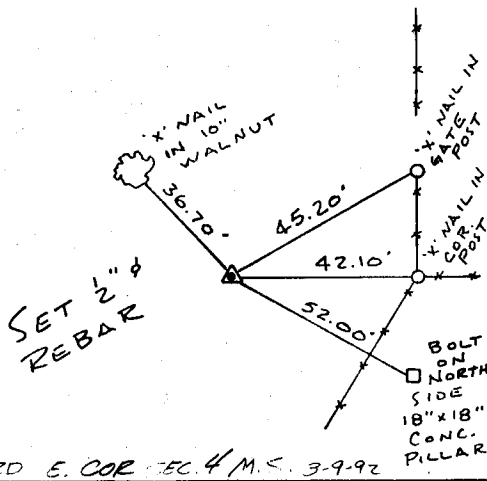
- A) THERE IS NO CERTIFICATE FOR THE CORNER ON FILE WITH THE RECORDER OF THE COUNTY IN WHICH THE CORNER IS LOCATED.
- B) CORNER POSITION DIFFERS FROM THAT SHOWN IN THE PUBLIC RECORDS OF THE COUNTY IN WHICH THE CORNER IS LOCATED.
- C) THE CORNER MONUMENT HAS BEEN REPLACED OR MODIFIED.
- D) THE REFERENCE TIES REFERRED TO IN AN EXISTING PUBLIC RECORD ARE INCORRECT.

MONUMENT DESCRIPTION AND REMARKS :

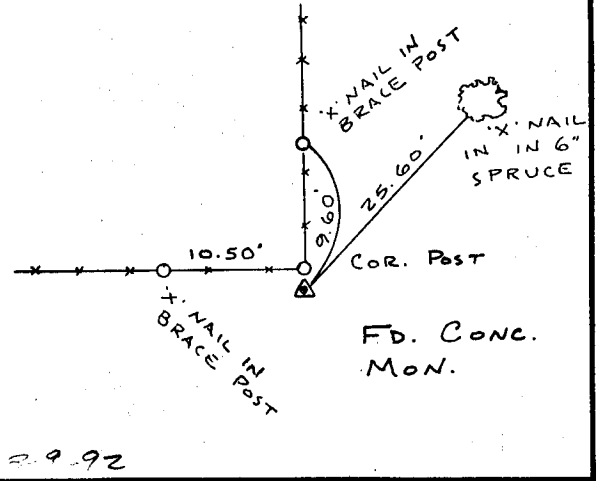
W'4 CORNER SECTION 3-84-4 SET 2" REBAR WITH L.S. CAP # 8165
 FLUSH WITH GROUND 116' ± SOUTH OF SOUTH EDGE OF OLD
 ABANDONED BRIDGE ACROSS BUFFALO CREEK
 E'4 CORNER SECTION 3-84-4 FOUND CONC. MON. WITH BRASS CAP
 2" DEEP 0.5' SOUTH OF COR. POST

RECOVERY TIE DRAWING

W'4 Cor. 3-84-4



E'4 Cor. 3-84-4



I, GLEN D. MEISNER, CERTIFY THAT THE CORNER LOCATION(S) SHOWN ON THIS RECORD WERE DETERMINED BY ME OR UNDER MY DIRECTION AND CONTROL AND THAT THIS U.S. PUBLIC LAND SURVEY MONUMENT RECORD IS CORRECT AND COMPLETE TO THE BEST OF MY KNOWLEDGE AND BELIEF.



Glen D. Meisner 1-20-92
 GLEN D. MEISNER U.S. NO 8165 DATE

GOVERNMENT CORNER
 5/8" TIE PIN SET
 CENTERLINE
 EXISTING FENCE LINE
 R.O.W. LINE

SHEET TITLE: U.S. PUBLIC LAND SURVEY RECORD
 PROJECT TITLE: GEORGE CASPERS SURVEY

HALL AND HALL ENGINEERS, INC.
 226 29TH STREET DRIVE S.E.
 CEDAR RAPIDS, IOWA 52403
 319-362-9548

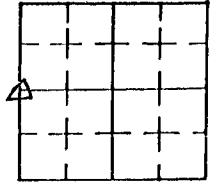
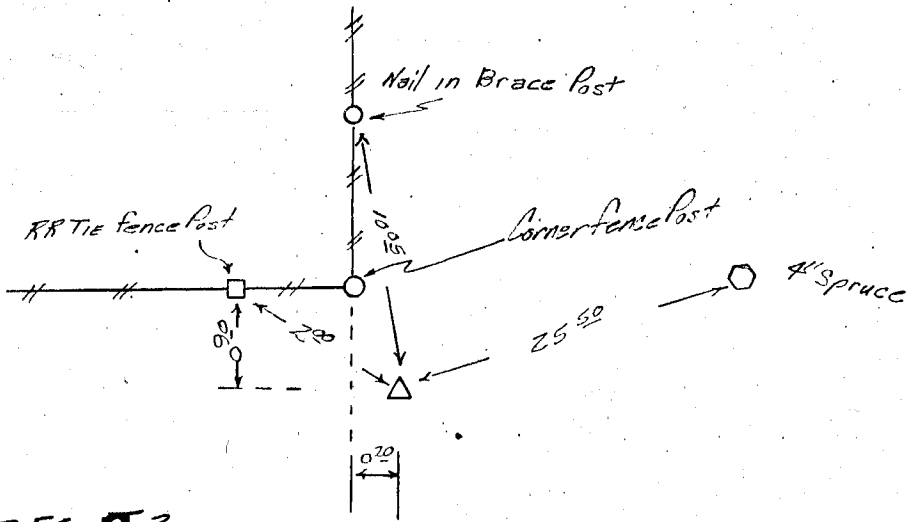
DW R.W.B.	KIC G.D.M.	APP	DATE 1-17-92	SCALE NONE	FNO 0T22	PNO 4466
--------------	---------------	-----	-----------------	---------------	-------------	-------------

UNITED STATES PUBLIC LAND SURVEY CORNER CERTIFICATE

Land Survey Monuments situated in Section 2, Township 84, Range 4 W., of the Fifth Principal Meridian, Jones County, Iowa.
 Previously recorded in Book N/A, Page N/A.

Monument Description and Remarks: Standard Concrete Monument
with Brass Disk at the West quarter corner

PLAN VIEW



FAIRVIEW

E 1/4 COR. SEC. 03

ON CARD

12-21-90

M. S.

I hereby certify that the survey work was completed and this certificate was prepared by me or under my direct personal supervision and that I am a duly registered land surveyor under the laws of the state of Iowa.

Donald E. Puffett

DONALD E. PUFFETT

REGISTERED LAND SURVEYOR NO. 9500

HOWARD R. GREEN COMPANY

DATE Dec. 13, 1990

List Corners to be Indexed

Corners	Section	Twp	Range
West 1/4	2	84	4 West

LAND SURVEYOR



Howard R. Green Company
CONSULTING ENGINEERS