

Number: 2026-1575  
 Recorded: 5/28/2026 at 9:39:31.0 AM  
 County Recording Fee: \$7.00  
 Iowa E-Filing Fee: \$3.13  
 Combined Fee: \$10.13  
 Revenue Tax:  
 Sheri L. Jones RECORDER  
 Jones County, Iowa

PREPARED BY & RETURN TO: MICHAEL A. BROONER CIVIL DESIGN ADVANTAGE  
 4121 NW URBANDALE DRIVE URBANDALE, IOWA 50322 PH: 515-389-4400 FAX: 515-389-4410

## UNITED STATES PUBLIC LAND SURVEY CORNER CERTIFICATE OF

Land Survey Monuments situated in Section 3, Township 84N, Range 4W, of the  
 Fifth Principal Meridian, JONES County, Iowa.  
 Previously recorded in FEE BOOK 2011 1440 in County Recorder's Office.

**Monument Description and Remarks:**

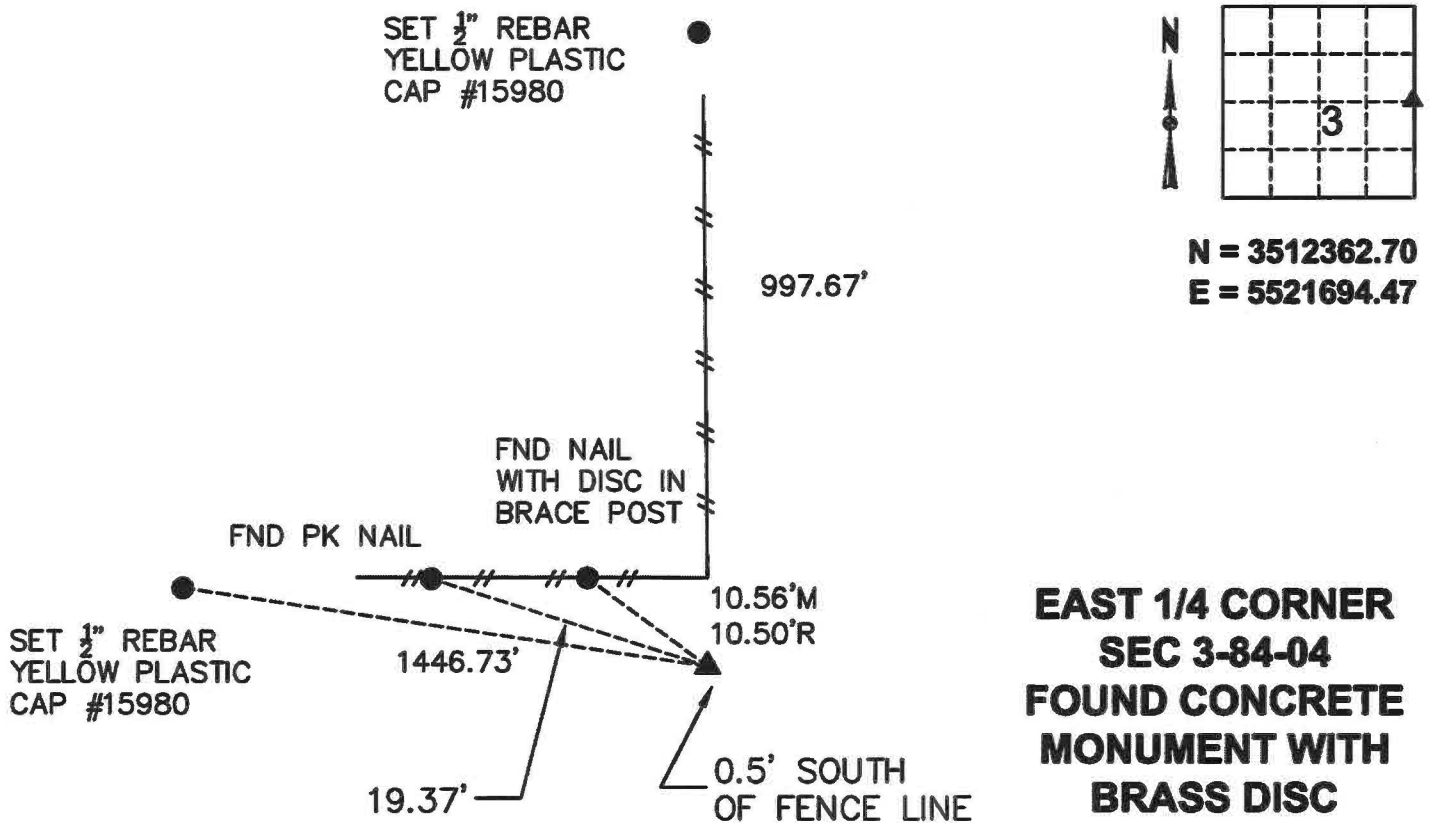
- THERE IS NO CERTIFICATE FOR THE CORNER ON FILE WITH THE RECORDER OF THE COUNTY IN WHICH THE CORNER IS LOCATED.
- THE SURVEYOR IN RESPONSIBLE CHARGE OF THE LAND SURVEYING ACCEPTS A CORNER POSITION WHICH DIFFERS FROM THAT SHOWN IN THE PUBLIC RECORDS OF THE COUNTY IN WHICH THE CORNER IS LOCATED.
- THE CORNER MONUMENT IS REPLACED OR MODIFIED IN ANY WAY.
- THE REFERENCE TIES IN AN EXISTING PUBLIC RECORD ARE INCORRECT OR MISSING.

**EAST 1/4 CORNER SECTION 3-84-04. FOUND CONCRETE MONUMENT WITH BRASS DISC USING  
 COORDINATES SHOWN ON EXISTING TIE CERTIFICATE. ACCEPTED MONUMENT AS SECTION CORNER.**

**SET NEW TIES AND USED FOR PLAT OF SURVEY.**

### PLAN VIEW

(Show a minimum of three reference ties to durable physical objects, relevant monuments and physical conditions that will enable recovery of the corner.)



**EAST 1/4 CORNER  
 SEC 3-84-04  
 FOUND CONCRETE  
 MONUMENT WITH  
 BRASS DISC**



I HEREBY CERTIFY THAT THIS LAND SURVEYING DOCUMENT WAS PREPARED AND THE RELATED SURVEYING WORK WAS PERFORMED BY ME OR UNDER MY DIRECT SUPERVISION AND THAT I AM A DULY LICENSED LAND SURVEYOR UNDER THE LAWS OF THE STATE OF IOWA.

*Michael Brooner*

5-27-2026

MICHAEL A. BROONER, P.L.S. DATE

LICENSE NUMBER 15980  
 MY LICENSE RENEWAL DATE IS DECEMBER 31, 2026.  
 CERTIFICATION COVERS THIS SHEET ONLY:

List Corners to be Indexed			
Corners	Section	Twp	Range
EAST 1/4 COR	03	84	04
WEST 1/4 COR	02	84	04

Jones County Marie Krutzfield Recorder  
 Fee Book 2011 1440  
 06/02/2011 @0151PM # Pages 1  
 ZSC SEC COR CERT  
 Total Fees: \$0.00

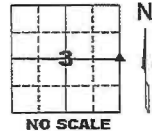
PREPARED BY  
 CLARENCE J. WALTON, JONES COUNTY ENGINEER'S OFFICE, 19501 HWY. 64, ANAMOSA, IOWA, 52205 (319) 462-3785

# UNITED STATES PUBLIC LAND SURVEY CORNER CERTIFICATE

LAND SURVEY MONUMENTS SITUATED IN SECTION 3, TOWNSHIP 84 NORTH,  
RANGE 4 WEST OF THE 5TH PRINCIPAL MERIDIAN, JONES COUNTY, IOWA.

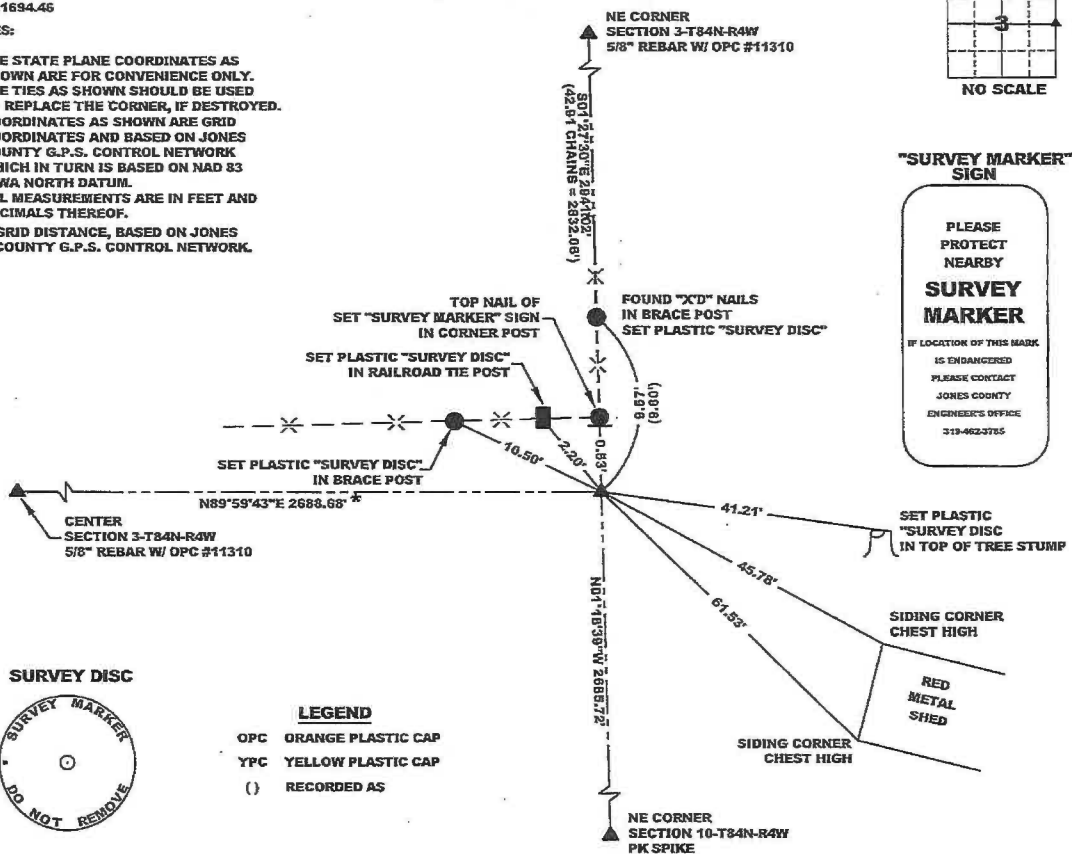
STATE PLANE COORDINATE  
 NAD 83 IOWA NORTH  
 N 3512362.67  
 E 5521694.46

CORNER SECTION TOWNSHIP RANGE  
 E 1/4 CORNER 3 T84N R4W



**NOTES:**

- 1) THE STATE PLANE COORDINATES AS SHOWN ARE FOR CONVENIENCE ONLY. THE TIES AS SHOWN SHOULD BE USED TO REPLACE THE CORNER, IF DESTROYED.
- 2) COORDINATES AS SHOWN ARE GRID COORDINATES AND BASED ON JONES COUNTY G.P.S. CONTROL NETWORK WHICH IN TURN IS BASED ON NAD 83 IOWA NORTH DATUM.
- 3) ALL MEASUREMENTS ARE IN FEET AND DECIMALS THEREOF.
- 4) \* GRID DISTANCE, BASED ON JONES COUNTY G.P.S. CONTROL NETWORK.



**"SURVEY MARKER" SIGN**

PLEASE PROTECT NEARBY  
**SURVEY MARKER**  
IF LOCATION OF THIS MARK IS ENDANGERED PLEASE CONTACT JONES COUNTY ENGINEER'S OFFICE 319-462-3785



**LEGEND**

OPC ORANGE PLASTIC CAP  
 YPC YELLOW PLASTIC CAP  
 ( ) RECORDED AS

PREVIOUSLY RECORDED IN BOOK 314, PAGE 346  
 MONUMENT DESCRIPTION AND HOW ESTABLISHED PER CORNER CERTIFICATE OF RECORD, FOUND 4"X4" CONCRETE MONUMENT W/ BRASS DISC 2" BELOW PRESENT GROUND SURFACE. SET "SURVEY MARKER" SIGN ON CORNER POST (SHOWN) AS WITNESS TO MONUMENT.

FIELD BOOK 333, PAGE 79. DATE OF SURVEY: 4/12/11



I hereby certify that this land surveying document and the related survey work was performed by me or under my direct personal supervision and that I am a duly registered Land Surveyor under the laws of the State of Iowa.

Signed: *Clarence J. Walton* 6/3/11  
 Clarence J. Walton, L.S.  
 My Registration Renewal Date is December 31, 2011  
 Iowa License Number 11310  
 Pages or sheets covered by this seal: Page 1 of 1.

- A. THERE IS NO CERTIFICATE FOR THE CORNER ON FILE WITH THE RECORDER OF THE COUNTY IN WHICH THE CORNER IS LOCATED.
- B. THE CORNER MONUMENT HAS BEEN REPLACED OR MODIFIED.
- C. THE SURVEYOR IN RESPONSIBLE CHARGE OF THE LAND SURVEYING ACCEPTS A CORNER POSITION THAT DIFFERS FROM THAT SHOWN IN THE PUBLIC RECORDS OF THE COUNTY IN WHICH THE CORNER IS LOCATED.
- D. THE REFERENCE TIES REFERRED TO IN AN EXISTING PUBLIC RECORD NO LONGER EXIST.
- E. EXISTING CORNER TIES UPDATED.

**CORNERS TO BE INDEXED**

CORNER	SECTION	TOWNSHIP	RANGE
E 1/4 CORNER	3	84N	4W
W 1/4 CORNER	2	84N	4W

**JONES COUNTY ENGINEER'S OFFICE**



19501 HWY. 64, ANAMOSA, IOWA 52205  
 (319) 462-3785

# SECTION CORNER CERTIFICATE

OF  
 LAND SURVEY MONUMENTS SITUATED IN SECTION 3, TOWNSHIP 84 NORTH,  
 RANGE 4 WEST, OF THE FIFTH PRINCIPAL MERIDIAN, JONES, COUNTY, IOWA.

PREVIOUSLY RECORDED IN BOOK \_\_\_\_\_ AT PAGE \_\_\_\_\_ .

FOR RECORDER'S USE

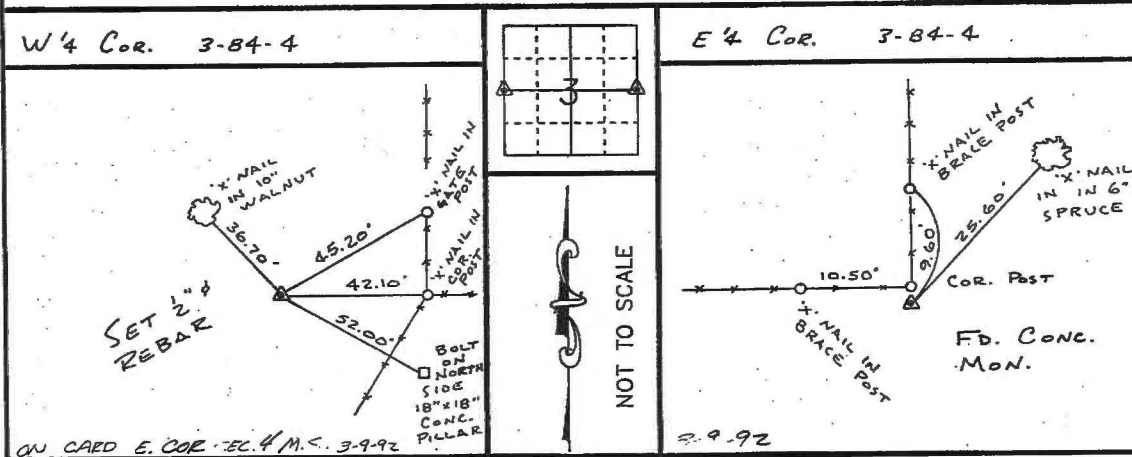
**REASON FOR PREPARING CERTIFICATE:**

- A) THERE IS NO CERTIFICATE FOR THE CORNER ON FILE WITH THE RECORDER OF THE COUNTY IN WHICH THE CORNER IS LOCATED.
- B) CORNER POSITION DIFFERS FROM THAT SHOWN IN THE PUBLIC RECORDS OF THE COUNTY IN WHICH THE CORNER IS LOCATED.
- C) THE CORNER MONUMENT HAS BEEN REPLACED OR MODIFIED.
- D) THE REFERENCE TIES REFERRED TO IN AN EXISTING PUBLIC RECORD ARE INCORRECT.

**MONUMENT DESCRIPTION AND REMARKS :**

W/4 CORNER SECTION 3-84-4 SET 2" REBAR WITH L.S. CAP # 8165  
 FLUSH WITH GROUND 116' ± SOUTH OF SOUTH EDGE OF OLD  
 ABANDONED BRIDGE ACROSS BUFFALO CREEK  
 E/4 CORNER SECTION 3-84-4 FOUND CONC. MON. WITH BRASS CAP  
 2" DEEP 0.5' SOUTH OF COR. POST

## RECOVERY TIE DRAWING



I, GLEN D. MEISNER, CERTIFY THAT THE CORNER LOCATION(S) SHOWN ON THIS RECORD WERE DETERMINED BY ME OR UNDER MY DIRECTION AND CONTROL AND THAT THIS U.S. PUBLIC LAND SURVEY MONUMENT RECORD IS CORRECT AND COMPLETE TO THE BEST OF MY KNOWLEDGE AND BELIEF.

Glen D. Meisner 1-20-92  
 GLEN D. MEISNER L.S. NO 8165 DATE



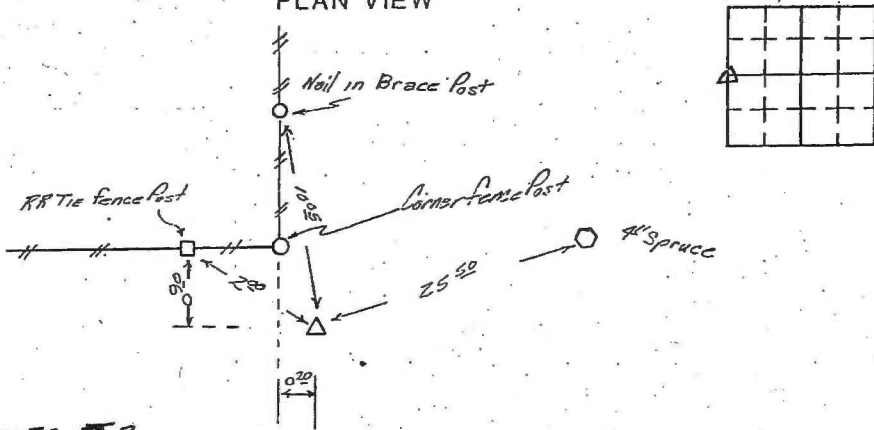
<p><b>LEGEND</b></p> <p>▲ GOVERNMENT CORNER</p> <p>○ 5/8" TIE PIN SET</p> <p>— CENTERLINE</p> <p>— EXISTING FENCE LINE</p> <p>--- R.O.W. LINE</p>	<p>SHEET TITLE: U.S. PUBLIC LAND SURVEY RECORD</p> <p>PROJECT TITLE: GEORGE CASPERS SURVEY</p>	<p><b>HALL AND HALL ENGINEERS, INC.</b></p> <p>226 29TH STREET DRIVE S.E.</p> <p>CEDAR RAPIDS, IOWA 52403</p> <p>319-362-9548</p>
<p>D W R.W.B.</p> <p>C R G.D.M.</p> <p>A P</p>	<p>DATE 1-17-92</p> <p>SCALE NONE</p>	<p>F NO B 0T22</p> <p>R NO J 4466</p>

UNITED STATES PUBLIC LAND SURVEY CORNER CERTIFICATE.

Land Survey Monuments situated in Section 2, Township 84, Range 4 W., of the Fifth Principal Meridian, Jones County, Iowa. Previously recorded in Book N/A, Page N/A.

Monument Description and Remarks: Standard Concrete Monument with Brass Disk at the West quarter corner

PLAN VIEW



FAIRVIEW  
E 1/4 COR. SEC. 03  
ON CARD  
12-21-90  
M. S.

I hereby certify that the survey work was completed and this certificate was prepared by me or under my direct personal supervision and that I am a duly registered land surveyor under the laws of the state of Iowa.

List Corners to be Indexed			
Corners	Section	Twp	Range
West 1/4	2	84	4 West

*Donald E. Puffett*  
DONALD E. PUFFETT  
REGISTERED LAND SURVEYOR NO. 9500  
HOWARD R. GREEN COMPANY

DATE Dec. 13, 1990

