

Number: 2026-1572
 Recorded: 5/28/2026 at 9:14:50.0 AM
 County Recording Fee: \$7.00
 Iowa E-Filing Fee: \$3.13
 Combined Fee: \$10.13
 Revenue Tax:
 Sheri L. Jones RECORDER
 Jones County, Iowa

PREPARED BY & RETURN TO: MICHAEL A. BROONER CIVIL DESIGN ADVANTAGE
 4121 NW URBANDALE DRIVE URBANDALE, IOWA 50322 PH: 515-369-4400 FAX: 515-369-4410

UNITED STATES PUBLIC LAND SURVEY CORNER CERTIFICATE OF

Land Survey Monuments situated in Section 3, Township 84N, Range 4W, of the
 Fifth Principal Meridian, JONES County, Iowa.
 Previously recorded in BK 2011 PG 1438 in County Recorder's Office.

Monument Description and Remarks:

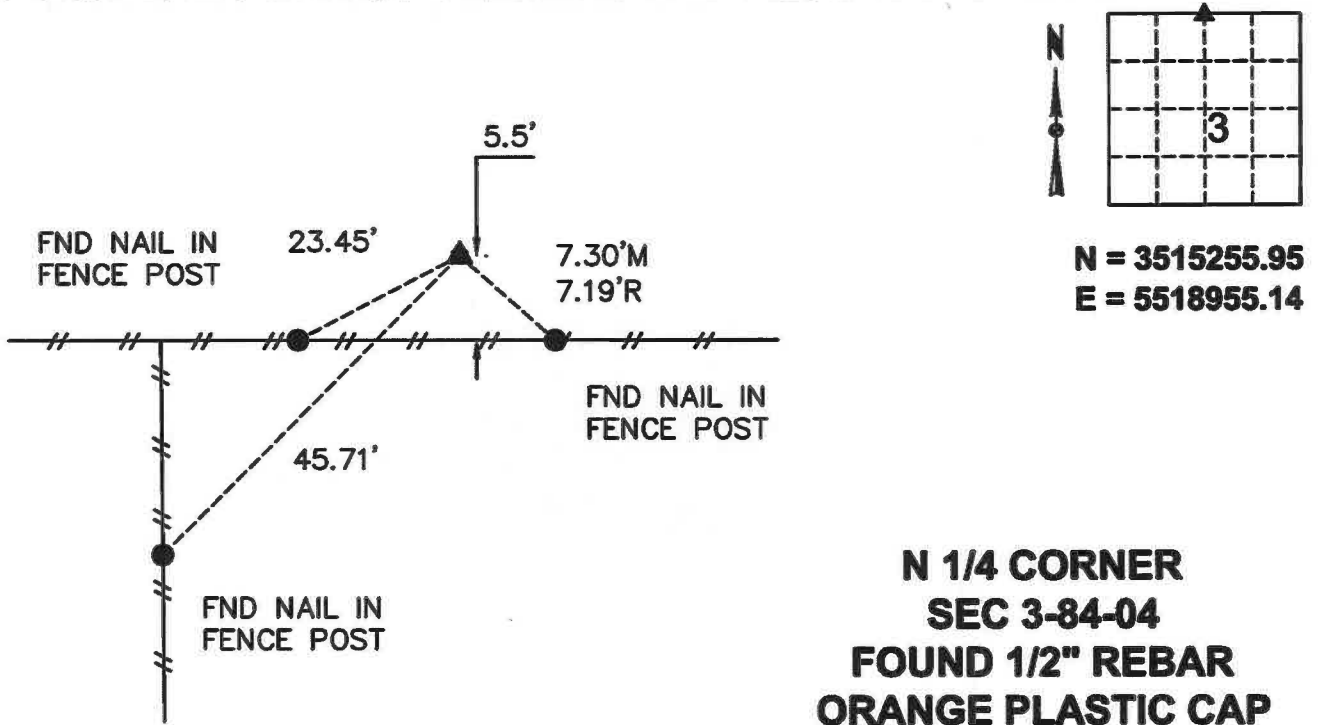
- THERE IS NO CERTIFICATE FOR THE CORNER ON FILE WITH THE RECORDER OF THE COUNTY IN WHICH THE CORNER IS LOCATED.
- THE SURVEYOR IN RESPONSIBLE CHARGE OF THE LAND SURVEYING ACCEPTS A CORNER POSITION WHICH DIFFERS FROM THAT SHOWN IN THE PUBLIC RECORDS OF THE COUNTY IN WHICH THE CORNER IS LOCATED.
- THE CORNER MONUMENT IS REPLACED OR MODIFIED IN ANY WAY.
- THE REFERENCE TIES IN AN EXISTING PUBLIC RECORD ARE INCORRECT OR MISSING.

N 1/4 CORNER SEC 3-84-4 FOUND 1/2" REBAR AT COORDINATES SHOWN ON EXISTING TIE. VERIFIED WITH EXISTING TIE AND ACCEPTED MONUMENT AS SECTION CORNER.

SET NEW TIES AND USED FOR PLAT OF SURVEY.

PLAN VIEW

(Show a minimum of three reference ties to durable physical objects, relevant monuments and physical conditions that will enable recovery of the corner.)



**N 1/4 CORNER
SEC 3-84-04
FOUND 1/2" REBAR
ORANGE PLASTIC CAP**



I HEREBY CERTIFY THAT THIS LAND SURVEYING DOCUMENT WAS PREPARED AND THE RELATED SURVEYING WORK WAS PERFORMED BY ME OR UNDER MY DIRECT SUPERVISION AND THAT I AM A DULY LICENSED LAND SURVEYOR UNDER THE LAWS OF THE STATE OF IOWA.

Michael Brooner 5-27-2026
 MICHAEL A. BROONER, P.L.S. DATE

LICENSE NUMBER 15980
 MY LICENSE RENEWAL DATE IS DECEMBER 31, 2026.
 CERTIFICATION COVERS THIS SHEET ONLY:

List Corners to be Indexed			
Corners	Section	Twp	Range
N 1/4 COR	03	84	04

Tech: EMG PN:2508.665 Date: 10-08-2025

Jones County Marie Krutzfield Recorder
 Fee Book 2011 1438
 06/02/2011 @0149PM # Pages 1
 ZSC SEC COR CERT
 Total Fees: \$0.00

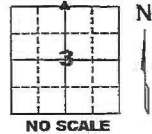
PREPARED BY
 CLARENCE J. WALTON, JONES COUNTY ENGINEER'S OFFICE, 19501 HWY. 64, ANAMOSA, IOWA, 52205 (319) 462-3785

UNITED STATES PUBLIC LAND SURVEY CORNER CERTIFICATE

LAND SURVEY MONUMENTS SITUATED IN SECTION 3, TOWNSHIP 84 NORTH,
 RANGE 4 WEST OF THE 5TH PRINCIPAL MERIDIAN, JONES COUNTY, IOWA.

STATE PLANE COORDINATE
 NAD 83 IOWA NORTH
 N 3515255.78
 E 5518955.08

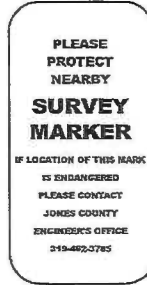
CORNER SECTION TOWNSHIP RANGE
 N 1/4 CORNER 3 T84N R4W



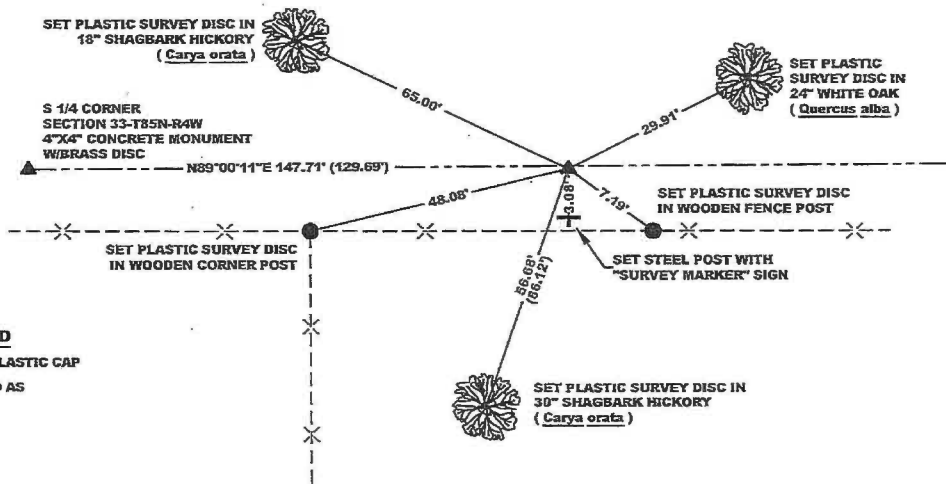
NOTES:

- 1) THE STATE PLANE COORDINATES AS SHOWN ARE FOR CONVENIENCE ONLY. THE TIES AS SHOWN SHOULD BE USED TO REPLACE THE CORNER, IF DESTROYED.
- 2) COORDINATES AS SHOWN ARE GRID COORDINATES AND BASED ON JONES COUNTY G.P.S. CONTROL NETWORK WHICH IN TURN IS BASED ON NAD 83 IOWA NORTH DATUM.
- 3) ALL MEASUREMENTS ARE IN FEET AND DECIMALS THEREOF.
- 4) * GRID DISTANCE, BASED ON JONES COUNTY G.P.S. CONTROL NETWORK.

"SURVEY MARKER" SIGN



SURVEY DISC



- LEGEND**
- OPC ORANGE PLASTIC CAP
 - () RECORDED AS

PREVIOUSLY RECORDED IN BOOK 331, PAGE 179
 MONUMENT DESCRIPTION AND HOW ESTABLISHED SET 1/2 REBAR W/ ORANGE PLASTIC CAP #11310 EQUIDISTANT BETWEEN THE NW CORNER OF SECTION 3-T84N-R4W AND THE NE CORNER OF SECTION 3-T84N-R4W AND ON LINE BETWEEN S 1/4 CORNER SECTION 33 AND SE CORNER OF SECTION 33. SET STEEL FENCE POST W/ "SURVEY MARKER" SIGN AS A WITNESS POST. AREA HAD BEEN BULLDOZED REMOVING PREVIOUS MONUMENT. BEARINGS OF THE SOUTH LINES OF SW 1/4 AND SE 1/4 OF SECTION 33 ARE NOT THE SAME.

FIELD BOOK 333, PAGE 76. DATE OF SURVEY: 4/20/11



I hereby certify that this land surveying document and the related survey work was performed by me or under my direct personal supervision and that I am a duly registered Land Surveyor under the laws of the State of Iowa.

Signed: *Clarence J. Walton* 6/3/11
 Clarence J. Walton, L.S.
 My Registration Renewal Date is December 31, 2011
 Iowa License Number 11310
 Pages or sheets covered by this seal: 1 of 1.

- A. THERE IS NO CERTIFICATE FOR THE CORNER ON FILE WITH THE RECORDER OF THE COUNTY IN WHICH THE CORNER IS LOCATED.
- B. THE CORNER MONUMENT HAS BEEN REPLACED OR MODIFIED.
- C. THE SURVEYOR IN RESPONSIBLE CHARGE OF THE LAND SURVEYING ACCEPTS A CORNER POSITION THAT DIFFERS FROM THAT SHOWN IN THE PUBLIC RECORDS OF THE COUNTY IN WHICH THE CORNER IS LOCATED.
- D. THE REFERENCE TIES REFERRED TO IN AN EXISTING PUBLIC RECORD NO LONGER EXIST.
- E. EXISTING CORNER TIES UPDATED.

CORNERS TO BE INDEXED

CORNER	SECTION	TOWNSHIP	RANGE
N 1/4 CORNER	3	84N	4W

JONES COUNTY ENGINEER'S OFFICE



19501 HWY. 64, ANAMOSA, IOWA 52205
 (319) 462-3785

SECTION CORNER CERTIFICATE

OF
 LAND SURVEY MONUMENTS SITUATED IN SECTION 3, TOWNSHIP 84 NORTH,
 RANGE 4 WEST, OF THE FIFTH PRINCIPAL MERIDIAN, JONES, COUNTY, IOWA.

PREVIOUSLY RECORDED IN BOOK _____ AT PAGE _____

FOR RECORDER'S USE

REASON FOR PREPARING CERTIFICATE:

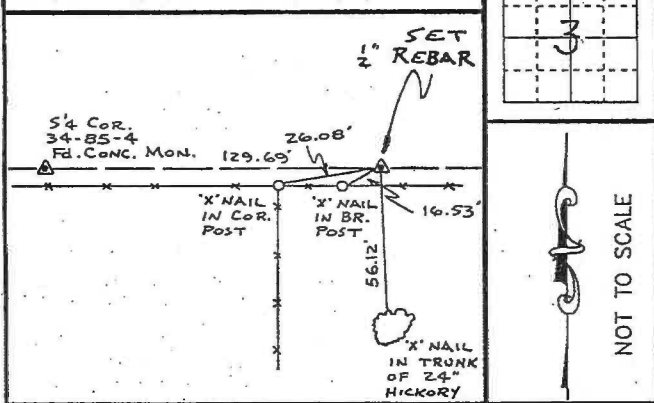
- A) THERE IS NO CERTIFICATE FOR THE CORNER ON FILE WITH THE RECORDER OF THE COUNTY IN WHICH THE CORNER IS LOCATED.
- B) CORNER POSITION DIFFERS FROM THAT SHOWN IN THE PUBLIC RECORDS OF THE COUNTY IN WHICH THE CORNER IS LOCATED.
- C) THE CORNER MONUMENT HAS BEEN REPLACED OR MODIFIED.
- D) THE REFERENCE TIES REFERRED TO IN AN EXISTING PUBLIC RECORD ARE INCORRECT.

MONUMENT DESCRIPTION AND REMARKS:

*N 1/4 CORNER SECTION 3, T84N, R4W SET 1/2" REBAR W/ U.S. CAP
 # 8165 2" ABOVE GROUND 5 1/2' NORTH OF EAST-WEST FENCE
 AND 25 1/2' EAST OF FENCE LINE SOUTH*

RECOVERY TIE DRAWING

N 1/4 COR. 3-84-4



ON CARD 2-2-93 M.S.

I, GLEN D. MEISNER, - CERTIFY THAT THE CORNER LOCATION(S) SHOWN ON THIS RECORD WERE DETERMINED BY ME OR UNDER MY DIRECTION AND CONTROL AND THAT THIS U.S. PUBLIC LAND SURVEY MONUMENT RECORD IS CORRECT AND COMPLETE TO THE BEST OF MY KNOWLEDGE AND BELIEF.



Glen D. Meisner
 GLEN D. MEISNER L.S. NO 8165 DATE *12-30-92*

DZMONT △ GOVERNMENT CORNER ○ 5/8" TIE PIN SET --- CENTERLINE - - - EXISTING FENCE LINE - - - R.O.W. LINE	SHEET NO. _____	U.S. PUBLIC LAND SURVEY RECORD	H HALL AND HALL ENGINEERS, INC. 226 29TH STREET DRIVE S.E. CEDAR RAPIDS, IOWA 52403 319-362-9548
	PROJECT NO. _____	KAREN CASPERS SURVEY	
DWN RWB	CHK GDM	APP _____	DATE: 11-27-92
		P. NO. 27	P. NO. 4777

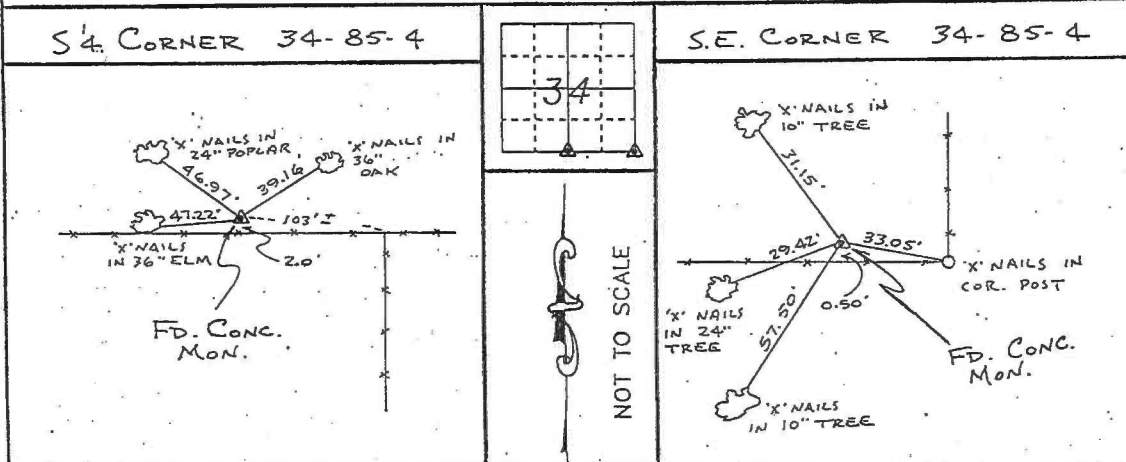
SECTION CORNER CERTIFICATE

OF
 LAND SURVEY MONUMENTS SITUATED IN SECTION 34, TOWNSHIP 85 NORTH,
 RANGE 4 WEST, OF THE FIFTH PRINCIPAL MERIDIAN, JONES, COUNTY, IOWA.

PREVIOUSLY RECORDED IN BOOK _____ AT PAGE _____.	FOR RECORDER'S USE
REASON FOR PREPARING CERTIFICATE: <input checked="" type="checkbox"/> A) THERE IS NO CERTIFICATE FOR THE CORNER ON FILE WITH THE RECORDER OF THE COUNTY IN WHICH THE CORNER IS LOCATED. <input type="checkbox"/> B) CORNER POSITION DIFFERS FROM THAT SHOWN IN THE PUBLIC RECORDS OF THE COUNTY IN WHICH THE CORNER IS LOCATED. <input type="checkbox"/> C) THE CORNER MONUMENT HAS BEEN REPLACED OR MODIFIED. <input type="checkbox"/> D) THE REFERENCE TIES REFERRED TO IN AN EXISTING PUBLIC RECORD ARE INCORRECT.	


MONUMENT DESCRIPTION AND REMARKS:
S 1/4 CORNER SECTION 34-T85N-R4W FOUND CONC. MON
2' NORTH OF EAST-WEST FENCE 4" ABOVE GROUND
S.E. CORNER SECTION 34-T85N-R4W FOUND CONC. MON. FLUSH
WITH GROUND 0.5' NORTH OF EAST-WEST FENCE


RECOVERY TIE DRAWING



ON CARD M.S.

I, DANIEL J. JOHNSON, CERTIFY THAT THE CORNER LOCATION(S) SHOWN ON THIS RECORD WERE DETERMINED BY ME OR UNDER MY DIRECTION AND CONTROL AND THAT THIS U.S. PUBLIC LAND SURVEY MONUMENT RECORD IS CORRECT AND COMPLETE TO THE BEST OF MY KNOWLEDGE AND BELIEF.


12-30-92
 DANIEL J. JOHNSON LS. NO 11954 DATE



A GOVERNMENT CORNER O 5/8" THE P.M. SET --- CENTERLINE - - - EXISTING FENCE LINE - - - R.O.X. LINE	SHEET NO. U.S. PUBLIC LAND SURVEY RECORD PROJECT TITLE: <u>VERA ORTGIES SURVEY</u>	HALL AND HALL ENGINEERS, INC. 226 29TH STREET DRIVE S.E. CEDAR RAPIDS, IOWA 52403 319-362-9548
DRAWN BY: <u>R.W.B.</u> CHECKED BY: <u>D.J.S.</u> APP. BY: <u>G.D.M.</u> DATE: <u>6-9-92</u>	SCALE: <u>NONE</u>	F. NO. <u>OT 25</u> P. NO. <u>4691</u>