

☐☐
 Jones County Marie Krutzfield Recorder
 Fee Book 2011 1439
 06/02/2011 @0150PM # Pages 1
 ZSC SEC COR CERT
 Total Fees: \$0.00

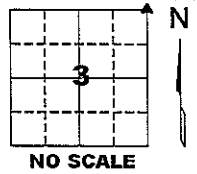
PREPARED BY
 CLARENCE J. WALTON, JONES COUNTY ENGINEER'S OFFICE, 19501 HWY. 64, ANAMOSA, IOWA, 52205 (319) 462-3785

UNITED STATES PUBLIC LAND SURVEY CORNER CERTIFICATE

**LAND SURVEY MONUMENTS SITUATED IN SECTION 3, TOWNSHIP 84 NORTH,
 RANGE 4 WEST OF THE 5TH PRINCIPAL MERIDIAN, JONES COUNTY, IOWA.**

STATE PLANE COORDINATE
 NAD 83 IOWA NORTH
 N 3515302.73
 E 5521619.61

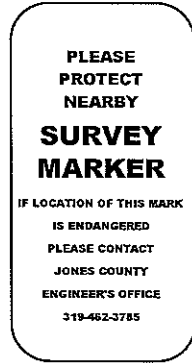
CORNER SECTION TOWNSHIP RANGE
 NE CORNER 3 T84N R4W



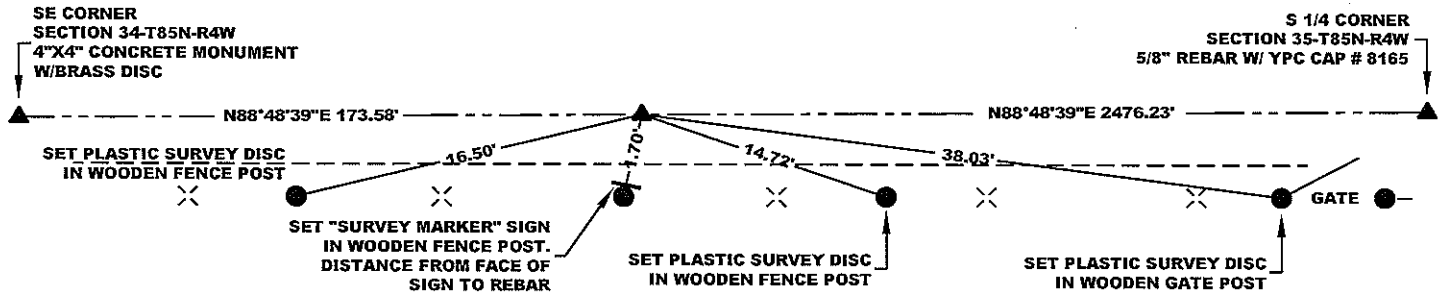
NOTES:

- 1) THE STATE PLANE COORDINATES AS SHOWN ARE FOR CONVENIENCE ONLY. THE TIES AS SHOWN SHOULD BE USED TO REPLACE THE CORNER, IF DESTROYED.
- 2) COORDINATES AS SHOWN ARE GRID COORDINATES AND BASED ON JONES COUNTY G.P.S. CONTROL NETWORK WHICH IN TURN IS BASED ON NAD 83 IOWA NORTH DATUM.
- 3) ALL MEASUREMENTS ARE IN FEET AND DECIMALS THEREOF.
- 4) * GRID DISTANCE, BASED ON JONES COUNTY G.P.S. CONTROL NETWORK.

"SURVEY MARKER"
SIGN

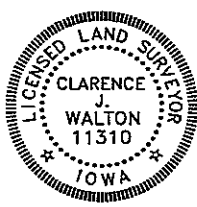


SURVEY DISC



PREVIOUSLY RECORDED IN BOOK 341, PAGE 48
 MONUMENT DESCRIPTION AND HOW ESTABLISHED PREVIOUS MONUMENT PRESUMABLY TORN OUT DUE TO APPARENT BULLDOZING AND NEW FENCE CONSTRUCTION. SET 5/8\"X24\" REBAR W/ ORANGE PLASTIC CAP #11310 FLUSH WITH PRESENT GROUND SURFACE ON LINE BETWEEN THE SE CORNER OF SECTION 34-T85N-R4W AND THE S 1/4 CORNER OF SECTION 35-T85N-R4W AND AT THE GOVERNMENT NOTE'S CLOSING DISTANCE OF 173.58' (263 LINKS) EAST OF 4\"X4\" CONCRETE MONUMENT WITH BRASS DISC REPRESENTING THE SE CORNER OF SAID SECTION 34. FOUND ANGLE IRON 4.84 FEET SOUTH AND 0.72 WEST OF SET 5/8\" REBAR.

FIELD BOOK 333, PAGE 76. DATE OF SURVEY: 4/20/11



I hereby certify that this land surveying document and the related survey work was performed by me or under my direct personal supervision and that I am a duly registered Land Surveyor under the laws of the State of Iowa.

Signed: *Clarence J. Walton* 6/3/11
 Clarence J. Walton, L.S.
 My Registration Renewal Date is December 31, 2011
 Iowa License Number 11310
 Pages or sheets covered by this seal: 1 of 1.

- A. THERE IS NO CERTIFICATE FOR THE CORNER ON FILE WITH THE RECORDER OF THE COUNTY IN WHICH THE CORNER IS LOCATED.
- B. THE CORNER MONUMENT HAS BEEN REPLACED OR MODIFIED.
- C. THE SURVEYOR IN RESPONSIBLE CHARGE OF THE LAND SURVEYING ACCEPTS A CORNER POSITION THAT DIFFERS FROM THAT SHOWN IN THE PUBLIC RECORDS OF THE COUNTY IN WHICH THE CORNER IS LOCATED.
- D. THE REFERENCE TIES REFERRED TO IN AN EXISTING PUBLIC RECORD NO LONGER EXIST.
- E. EXISTING CORNER TIES UPDATED.

CORNERS TO BE INDEXED

CORNER	SECTION	TOWNSHIP	RANGE
NE CORNER	3	84N	4W
NW CORNER	2	84N	4W

JONES COUNTY ENGINEER'S OFFICE



19501 HWY. 64, ANAMOSA, IOWA 52205
 (319) 462-3785

SECTION CORNER CERTIFICATE

OF
 LAND SURVEY MONUMENTS SITUATED IN SECTION 2, TOWNSHIP 84 NORTH,
 RANGE 4 WEST, OF THE FIFTH PRINCIPAL MERIDIAN, JONES, COUNTY, IOWA.

PREVIOUSLY RECORDED IN BOOK _____ AT PAGE _____

FOR RECORDER'S USE

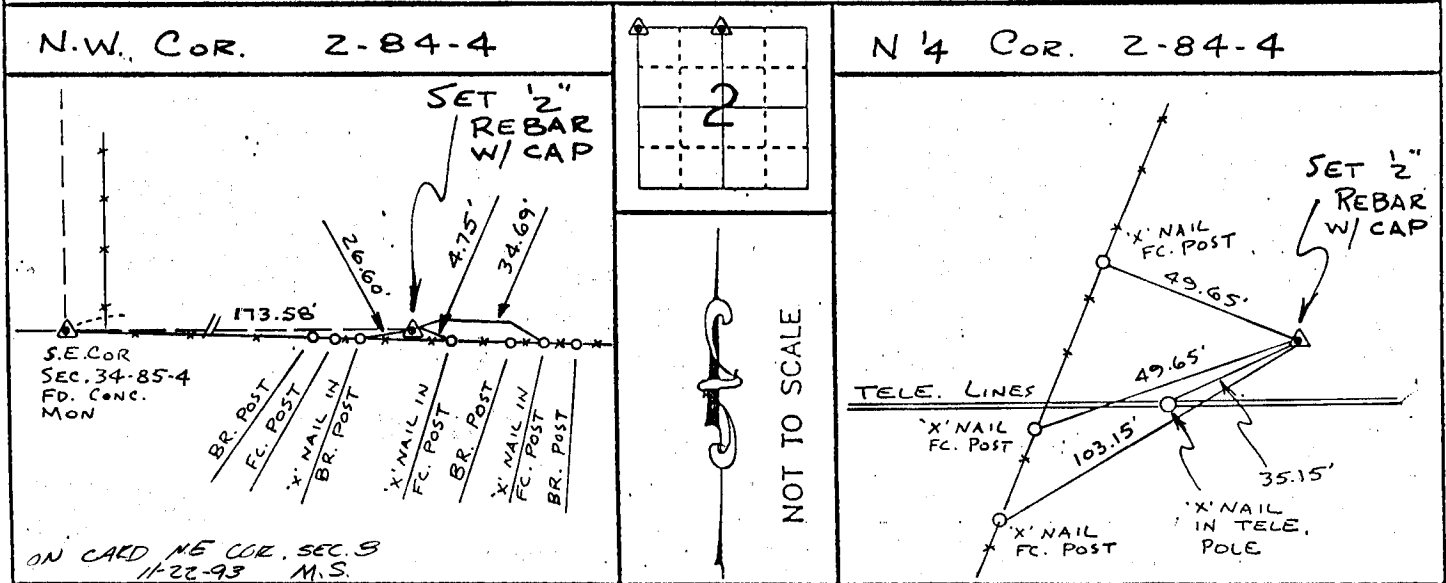
REASON FOR PREPARING CERTIFICATE:

- A) THERE IS NO CERTIFICATE FOR THE CORNER ON FILE WITH THE RECORDER OF THE COUNTY IN WHICH THE CORNER IS LOCATED.
- B) CORNER POSITION DIFFERS FROM THAT SHOWN IN THE PUBLIC RECORDS OF THE COUNTY IN WHICH THE CORNER IS LOCATED.
- C) THE CORNER MONUMENT HAS BEEN REPLACED OR MODIFIED.
- D) THE REFERENCE TIES REFERRED TO IN AN EXISTING PUBLIC RECORD ARE INCORRECT.

MONUMENT DESCRIPTION AND REMARKS :

N.W. CORNER SECTION 2-T84N-R4W SET 1/2" REBAR
W/ L.S. CAP # 8165 FLUSH W/ GROUND 4 1/2' NORTH OF
EAST-WEST FC.
N 1/4 CORNER SECTION 2-T84N-R4W SET 1/2" REBAR
W/ L.S. CAP # 8165 4" DEEP

RECOVERY TIE DRAWING



I, **GLEN D. MEISNER** CERTIFY THAT THE CORNER LOCATION(S) SHOWN ON THIS RECORD WERE DETERMINED BY ME OR UNDER MY DIRECTION AND CONTROL AND THAT THIS U.S. PUBLIC LAND SURVEY MONUMENT RECORD IS CORRECT AND COMPLETE TO THE BEST OF MY KNOWLEDGE AND BELIEF.



Glen D. Meisner 6-29-93
 GLEN D. MEISNER L.S. NO 8165 DATE

GOVERNMENT CORNER 5/8" TIC PIN SET CENTERLINE EXISTING FENCE LINE R.O.W. LINE	SHEET NO.: PROJECT NO.:	U.S. PUBLIC LAND SURVEY RECORD MARK OGDEN SURVEY	HALL AND HALL ENGINEERS, INC. 226 29TH STREET DRIVE S.E. CEDAR RAPIDS, IOWA 52403 319-362-9548
	DW: RWB CH: GDM APP:	DATE: 3-14-93 SCALE: NONE PNO: OT23 PROJ: 4820	

84403e-062993 . 84402c-062993

SECTION CORNER CERTIFICATE

OF
 LAND SURVEY MONUMENTS SITUATED IN SECTION 34, TOWNSHIP 85 NORTH,
 RANGE 4 WEST, OF THE FIFTH PRINCIPAL MERIDIAN, JONES, COUNTY, IOWA.

PREVIOUSLY RECORDED IN BOOK _____ AT PAGE _____

FOR RECORDER'S USE

REASON FOR PREPARING CERTIFICATE:

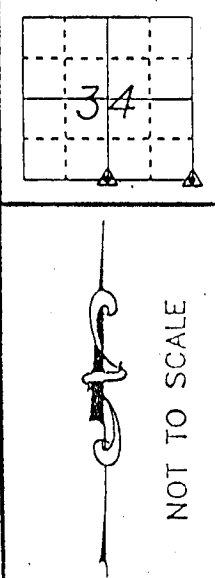
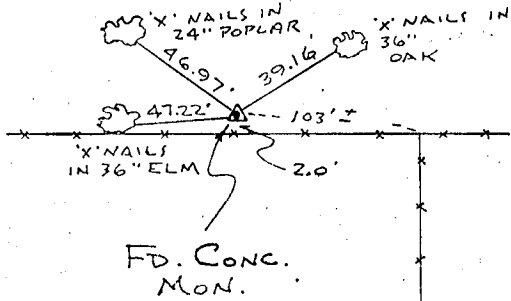
- A) THERE IS NO CERTIFICATE FOR THE CORNER ON FILE WITH THE RECORDER OF THE COUNTY IN WHICH THE CORNER IS LOCATED.
- B) CORNER POSITION DIFFERS FROM THAT SHOWN IN THE PUBLIC RECORDS OF THE COUNTY IN WHICH THE CORNER IS LOCATED.
- C) THE CORNER MONUMENT HAS BEEN REPLACED OR MODIFIED.
- D) THE REFERENCE TIES REFERRED TO IN AN EXISTING PUBLIC RECORD ARE INCORRECT.

MONUMENT DESCRIPTION AND REMARKS :

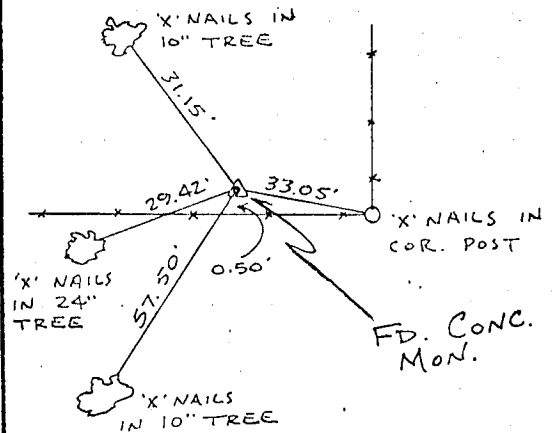
S 1/4 CORNER SECTION 34-T85N-R4W FOUND CONC. MON
 2' NORTH OF EAST-WEST FENCE 4" ABOVE GROUND
 S.E. CORNER SECTION 34-T85N-R4W FOUND CONC. MON. FLUSH
 WITH GROUND 0.5' NORTH OF EAST-WEST FENCE

RECOVERY TIE DRAWING

S 1/4 CORNER 34-85-4



S.E. CORNER 34-85-4

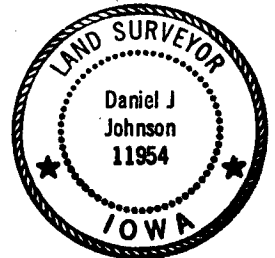


2-25-92 ON CARD M.S.

ON CARD M.S.

I, DANIEL J. JOHNSON, CERTIFY THAT THE CORNER LOCATION(S) SHOWN ON THIS RECORD WERE DETERMINED BY ME OR UNDER MY DIRECTION AND CONTROL AND THAT THIS U.S. PUBLIC LAND SURVEY MONUMENT RECORD IS CORRECT AND COMPLETE TO THE BEST OF MY KNOWLEDGE AND BELIEF.

Daniel J. Johnson
 DANIEL J. JOHNSON L.S. NO 11954 DATE 12-30-92



DZRCOIL	▲ GOVERNMENT CORNER ○ 5/8" THE PIN SET --- CENTERLINE - - - EXISTING FENCE LINE - - - R.O.W. LINE	SHEET TITLE: U.S. PUBLIC LAND SURVEY RECORD PROJECT TITLE: VERA ORTGIES SURVEY	HALL AND HALL ENGINEERS, INC. 226 29TH STREET DRIVE S.E. CEDAR RAPIDS, IOWA 52403 319-362-9548
	D W N R.W.B. C H K D.J.J. A P P G.D.M. D A T E 6-9-92 S C A L E NONE F N O B OT 25 P R O J 4691		