

SECTION CORNER CERTIFICATE

OF
 LAND SURVEY MONUMENTS SITUATED IN SECTION 4, TOWNSHIP 84 NORTH,
 RANGE 4 WEST, OF THE FIFTH PRINCIPAL MERIDIAN, JONES, COUNTY, IOWA.

PREVIOUSLY RECORDED IN BOOK _____ AT PAGE _____

FOR RECORDER'S USE

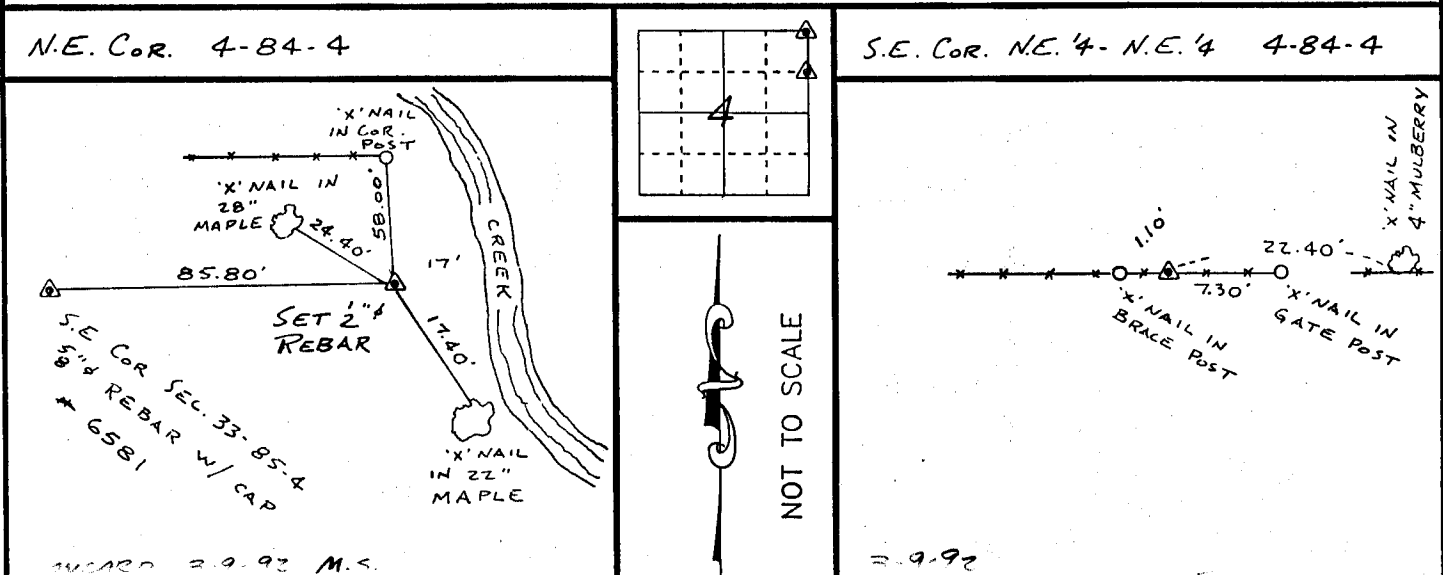
REASON FOR PREPARING CERTIFICATE:

- A) THERE IS NO CERTIFICATE FOR THE CORNER ON FILE WITH THE RECORDER OF THE COUNTY IN WHICH THE CORNER IS LOCATED.
- B) CORNER POSITION DIFFERS FROM THAT SHOWN IN THE PUBLIC RECORDS OF THE COUNTY IN WHICH THE CORNER IS LOCATED.
- C) THE CORNER MONUMENT HAS BEEN REPLACED OR MODIFIED.
- D) THE REFERENCE TIES REFERRED TO IN AN EXISTING PUBLIC RECORD ARE INCORRECT.

MONUMENT DESCRIPTION AND REMARKS:

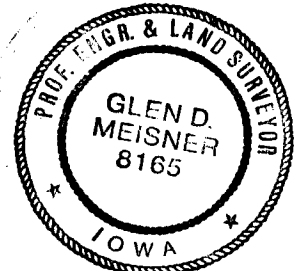
N.E. CORNER SECTION 4-T84N-R4W SET 1/2" # REBAR WITH L.S. CAP.
 # 8165 FLUSH WITH GROUND 85.80' EAST OF S.E. COR. SEC. 33-85-4
 AND 17.00' ± WEST OF WEST EDGE CREEK
 S.E. CORNER NE 1/4 - NE 1/4 SECTION 4-T84N-R4W SET 1/2" # REBAR WITH L.S. CAP
 # 8165 ON EAST-WEST FENCE FLUSH WITH GROUND

RECOVERY TIE DRAWING



I, GLEN D. MEISNER, -CERTIFY THAT THE CORNER LOCATION(S) SHOWN ON THIS RECORD WERE DETERMINED BY ME OR UNDER MY DIRECTION AND CONTROL AND THAT THIS U.S. PUBLIC LAND SURVEY MONUMENT RECORD IS CORRECT AND COMPLETE TO THE BEST OF MY KNOWLEDGE AND BELIEF.

Glen D. Meisner 1-20-92
 GLEN D. MEISNER L.S. NO 8165 DATE



DZFMGL	<input type="checkbox"/> GOVERNMENT CORNER	SHEET TITLE	U.S. PUBLIC LAND SURVEY RECORD	HH	HALL AND HALL ENGINEERS, INC. 226 29TH STREET DRIVE S.E. CEDAR RAPIDS, IOWA 52403 319-362-9548	
	<input type="checkbox"/> 5/8" TIE PIN SET	PROJECT TITLE	GEORGE CASPERS SURVEY			
	<input type="checkbox"/> CENTERLINE					
	<input type="checkbox"/> EXISTING FENCE LINE					
	<input type="checkbox"/> R.O.W. LINE					
	DW N R.W.B.	CHK G.D.M.	APP	DATE 1-17-92	SCALE NONE	FNO B OT 22 PNO J 4466