

Index Legend

Location: Section 33, T85N, R4W, SE of SW
 Section 33, T85N, R4W, SW of SE
 Surveyor: Dennis Michael, PLS No. 23526
 Surveyor
 Company: Michael Surveying, LLC
 Return To: Dennis Michael
 2654 Crimson Avenue
 Fruitland, Iowa 52749
 dennis@michaelsurveyingllc.com
 (563) 506-4755

For County Recorder Use

Number: 2018-1061
 Recorded: 4/27/2018 at 11:33:42.0 AM
 Fee Amount: \$7.00
 Revenue Tax:
 Sheri L. Jones RECORDER
 Jones County, Iowa

UNITED STATES PUBLIC LAND SURVEY CORNER CERTIFICATE OF

Land Survey Monuments situated in Section 33, Township T85N, Range R4W, of the Fifth Principal Meridian, Jones County, Iowa.
 Previously recorded certificate found in Fee Book 2008 3371, in the Office of the Jones County Recorder.

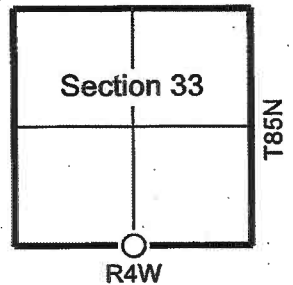
Monument Description and Remarks: Found 1/2" diameter rebar with yellow cap at ground and measured. Rebar was in good condition and cap was stamped "Burger 12642". Rebar was consistent with record certificate. The tie distance from the North 1/4 of Section 4-84N-R4W measured 48.48', not the record distance indicated.

Set 5/8" diameter by 30" rebar with blue cap stamped "Dennis C Michael, Iowa PLS 23526" at the record distance and online with the North 1/4 of said Section 4 and the Southeast Corner of Section 33-85N-R4W.

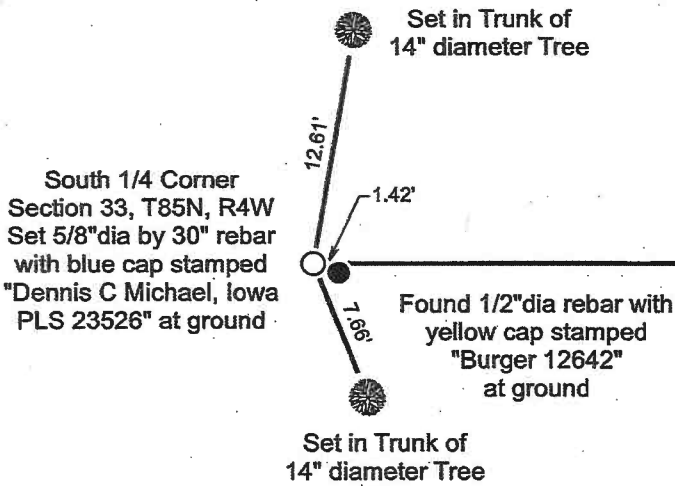
* Note: All ties measured with Nyclad Steel Tape

Plan View

Iowa Regional Coordinate System
 Zone 10 Cedar Rapids
 NAD83 (2011) Datum, Geoid12B
 Set 5/8" dia Rebar w/Cap
 N8,105,371.77Ft, E20,594,966.48Ft
 GPS Measured by DM & TP on 4/21/2018



North 1/4 Corner
 Section 4, T84N, R4W
 Found 1'x1' stone monument
 1.5' above ground



No Scale

Note:
 All ties are washer head nails with blue plastic disks stamped "Dennis C Michael, Iowa PLS 23526", unless otherwise noted.

South Quarter Corner

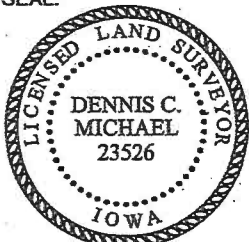
(X.XX') Denotes Record Distance

I hereby certify that this land surveying document was prepared and the related survey work was performed by me or under my direct personal supervision and that I am a duly licensed Professional Land Surveyor under the laws of the State of Iowa.

Signed: *[Signature]* Date: 4/26/18
 Dennis C. Michael, PLS, No. 23526
 My license renewal date is December 31, 2019.

Pages or sheets covered by this seal: Sheet 1 of 1.

SEAL:



List Corners to be Indexed

Corner	Section	Twp	Range
S 1/4	33	T85N	R4W

MICHAEL SURVEYING, LLC

2654 Crimson Avenue
 Fruitland, Iowa 52749
 Phone: (563) 506-4755

FEE BOOK 2008 3371 11/14/2008 1:47 PM
REC FEES \$7.00
PAGES: 1

Marie Krutzfield, Recorder
Jones County, Iowa

Prepared by Wm. Burger LandSurveyors 510 3rd Street West Court, Northtongon, Iowa Phone 563 - 855 2028

UNITED STATES PUBLIC LAND SURVEY CORNER CERTIFICATE

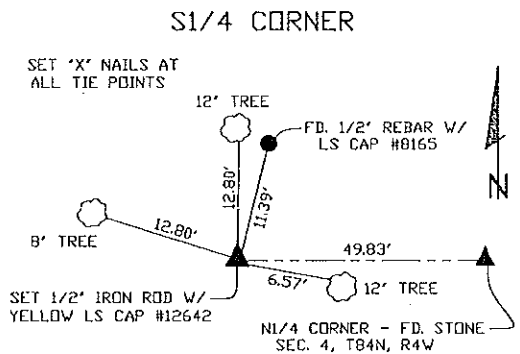
Land Survey Monuments situated in Section 33, Township 85N, Range 4W, of the Fifth Principal Meridian, Jones County, Iowa. Previously recorded in N/A in the Office of the County Recorder

Monument Description and Remarks: (No Corner Certificates found at the County Recorders Office)

S1/4 CORNER - SET 1/2' IRON ROD W/YELLOW LS CAP #12642 - USED INFORMATION FROM PLAT PREVIOUSLY RECORDED IN THE OFFICE OF THE JONES COUNTY RECORDER IN PLAT BOOK J, PAGE 66 TO RESET THIS CORNER

NOTE: FOUND 1/2 REBAR W/ YELLOW LS CAP #8165 11.39' NE'ERLY OF TRUE LOCATION, THIS REBAR DID NOT FIT WITH PLAT RECORDED IN THE OFFICE OF THE JONES COUNTY RECORDER IN PLAT BOOK J, PAGE 66

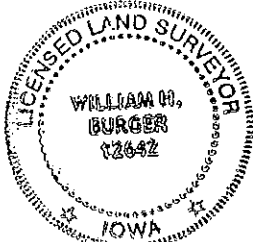
PLAN VIEW



SEC. 33 TWP. 85N RANGE 4W

CORNERS TO BE INDEXED

S1/4 CORNER 33 85N 4W



I hereby certify that this land surveying document was prepared and related survey work was performed by me or under my direct personal supervision and that I am a duly licensed Land Surveyor under the laws of the State of Iowa.

William H. Burger 11/14/08
William H. Burger Date

License number 12642

My license renewal date is December 31, 2008

Pages or Sheets covered by this seal: Sheet 1 of 1

FEEBOOK: 2008 3288 11/6/2008 3:06 PM
REC FEES: \$7.00
PAGES: 1

Marie Krutzfield, Recorder
Jones County, Iowa

Prepared by *Wm. Burger LandSurveyors* 510 3rd Street West Court, Worthington, Iowa Phone 563 - 855 2028

UNITED STATES PUBLIC LAND SURVEY CORNER CERTIFICATE

Land Survey Monuments situated in Section 33, Township 85N, Range 4W, of the Fifth Principal Meridian, Jones County, Iowa. Previously recorded in N/A in the Office of the County Recorder

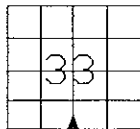
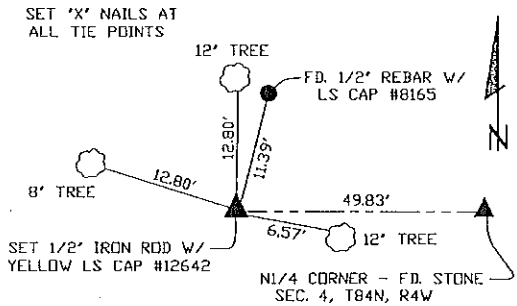
Monument Description and Remarks: (No Corner Certificates found at the County Recorders Office)

S1/4 CORNER - SET 1/2" IRON ROD W/YELLOW LS CAP #12642 - USED INFORMATION FROM PLAT PREVIOUSLY RECORDED IN THE OFFICE OF THE JONES COUNTY RECORDER IN PLAT BOOK J, PAGE 66 TO RESET THIS CORNER

NOTE: FOUND 1/2 REBAR W/ YELLOW LS CAP #8165 11.39' NE'ERLY OF TRUE LOCATION, THIS REBAR DID NOT FIT WITH PLAT RECORDED IN THE OFFICE OF THE JONES COUNTY RECORDER IN PLAT BOOK J, PAGE 66

PLAN VIEW

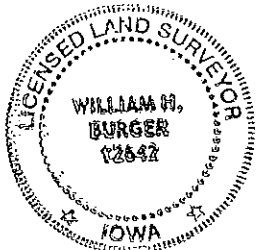
S1/4 CORNER



SEC. 33 TWP. 85N RANGE 4W

CORNERS TO BE INDEXED

S1/4 CORNER 33 85N 4W



I hereby certify that this land surveying document was prepared and related survey work was performed by me or under my direct personal supervision and that I am a duly licensed Land Surveyor under the laws of the State of Iowa.

William H. Burger 4/6/08
Date

William H. Burger
License number 12642

My license renewal date is December 31, 2008

Pages or Sheets covered by this seal Sheet 1 of 1

RECEIVED

NOV 21 2008

JONES COUNTY ENGINEER

Prepared by Wm. Burger LandSurveyors 510 3rd Street West Court, Worthington, Iowa Phone 563 - 855 2028

UNITED STATES PUBLIC LAND SURVEY CORNER CERTIFICATE

Land Survey Monuments situated in Section 33, Township 85N, Range 4W, of the Fifth Principal Meridian, Jones County, Iowa. Previously recorded in N/A in the Office of the County Recorder

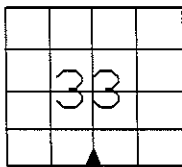
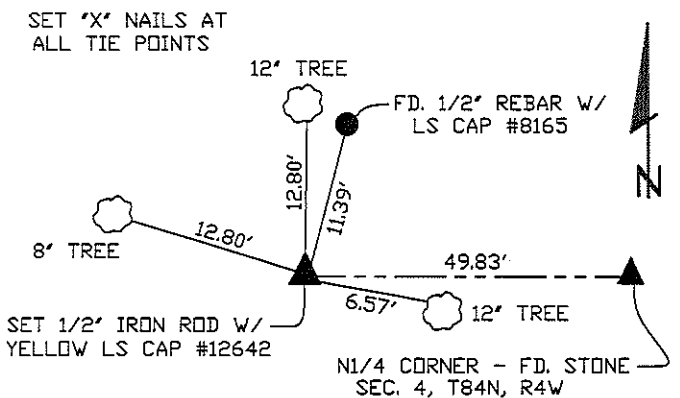
Monument Description and Remarks: (No Corner Certificates found at the County Recorders Office)

S1/4 CORNER - SET 1/2" IRON ROD W/YELLOW LS CAP #12642 - USED INFORMATION FROM PLAT PREVIOUSLY RECORDED IN THE OFFICE OF THE JONES COUNTY RECORDER IN PLAT BOOK J, PAGE 66 TO RESET THIS CORNER

NOTE: FOUND 1/2 REBAR W/ YELLOW LS CAP #8165 11.39' NE'ERLY OF TRUE LOCATION, THIS REBAR DID NOT FIT WITH PLAT RECORDED IN THE OFFICE OF THE JONES COUNTY RECORDER IN PLAT BOOK J, PAGE 66

PLAN VIEW

S1/4 CORNER



SEC. 33 TWP. 85N RANGE 4W

CORNERS TO BE INDEXED

S1/4 CORNER	33	85N	4W



I hereby certify that this land surveying document was prepared and related survey work was performed by me or under my direct personal supervision and that I am a duly licensed Land Surveyor under the laws of the State of Iowa.

William H. Burger 11/14/08
Date

William H. Burger

License number 12642

My license renewal date is December 31, 2008

Pages or Sheets covered by this seal: Sheet 1 of 1

SECTION CORNER CERTIFICATE

OF
 LAND SURVEY MONUMENTS SITUATED IN SECTION 4, TOWNSHIP 84 NORTH,
 RANGE 4 WEST, OF THE FIFTH PRINCIPAL MERIDIAN, JONES, COUNTY, IOWA.

PREVIOUSLY RECORDED IN BOOK _____ AT PAGE _____

FOR RECORDER'S USE

REASON FOR PREPARING CERTIFICATE:

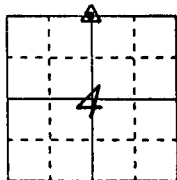
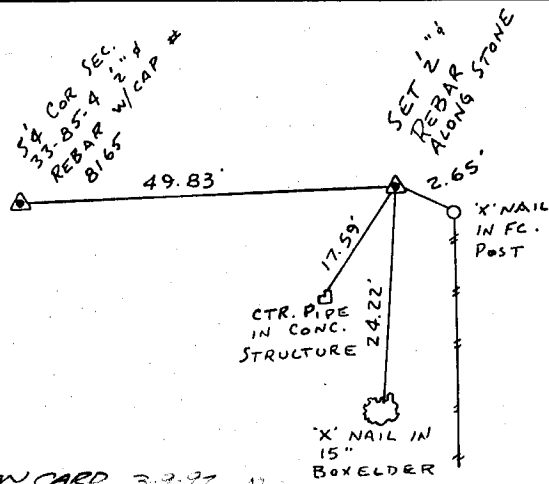
- A) THERE IS NO CERTIFICATE FOR THE CORNER ON FILE WITH THE RECORDER OF THE COUNTY IN WHICH THE CORNER IS LOCATED.
- B) CORNER POSITION DIFFERS FROM THAT SHOWN IN THE PUBLIC RECORDS OF THE COUNTY IN WHICH THE CORNER IS LOCATED.
- C) THE CORNER MONUMENT HAS BEEN REPLACED OR MODIFIED.
- D) THE REFERENCE TIES REFERRED TO IN AN EXISTING PUBLIC RECORD ARE INCORRECT.

MONUMENT DESCRIPTION AND REMARKS :

N 1/4 CORNER SECTION 4-T84N-R4W FOUND STONE 2" BELOW
GROUND SET 2" x REBAR WITH L.S. CAP # 8165 ALONG NORTH
EDGE OF STONE

RECOVERY TIE DRAWING

N 1/4 Cor. 4-84-4



NOT TO SCALE

I, GLEN D. MEISNER, CERTIFY THAT THE CORNER LOCATION(S) SHOWN ON THIS RECORD WERE DETERMINED BY ME OR UNDER MY DIRECTION AND CONTROL AND THAT THIS U.S. PUBLIC LAND SURVEY MONUMENT RECORD IS CORRECT AND COMPLETE TO THE BEST OF MY KNOWLEDGE AND BELIEF.



Glen D. Meisner 2-18-92
 GLEN D. MEISNER L.S. NO 8165 DATE

DZMGMF	△ GOVERNMENT CORNER ○ 5/8" TIE PIN SET --- CENTERLINE - - - EXISTING FENCE LINE - - - R.O.W. LINE	SHEET TITLE: U.S. PUBLIC LAND SURVEY RECORD PROJECT TITLE: <u>GEORGE CASPERS SURVEY</u>	HALL AND HALL ENGINEERS, INC. 226 29TH STREET DRIVE S.E. CEDAR RAPIDS, IOWA 52403 319-362-9548			
	DW N <u>R.W.B.</u>	KIC <u>G.D.M.</u>		APP _____	DATE <u>1-17-92</u>	SCALE <u>NONE</u>

SECTION CORNER CERTIFICATE

OF
 LAND SURVEY MONUMENTS SITUATED IN SECTION 33, TOWNSHIP 85 NORTH,
 RANGE 4 WEST, OF THE FIFTH PRINCIPAL MERIDIAN, JONES, COUNTY, IOWA.

PREVIOUSLY RECORDED IN BOOK _____ AT PAGE _____.

FOR RECORDER'S USE

REASON FOR PREPARING CERTIFICATE:

- A) THERE IS NO CERTIFICATE FOR THE CORNER ON FILE WITH THE RECORDER OF THE COUNTY IN WHICH THE CORNER IS LOCATED.
- B) CORNER POSITION DIFFERS FROM THAT SHOWN IN THE PUBLIC RECORDS OF THE COUNTY IN WHICH THE CORNER IS LOCATED.
- C) THE CORNER MONUMENT HAS BEEN REPLACED OR MODIFIED.
- D) THE REFERENCE TIES REFERRED TO IN AN EXISTING PUBLIC RECORD ARE INCORRECT.

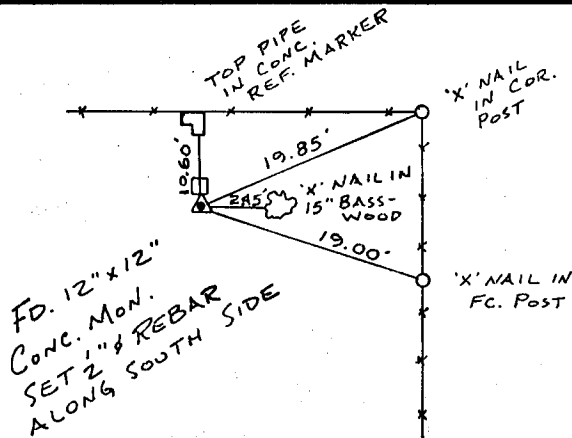
MONUMENT DESCRIPTION AND REMARKS :

CENTER SECTION 33-T85N-R4W FOUND 12" x 12" CONC. MON.
 SET 1/2" # REBAR WITH CAP # 8165 ALONG SOUTH SIDE 3"
 ABOVE GROUND

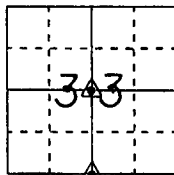
S'4 CORNER SECTION 33-T85N-R4W SET 1/2" # REBAR WITH L.S. CAP
 # 8165 FLUSH WITH GROUND

RECOVERY TIE DRAWING

CENTER 33-85-4

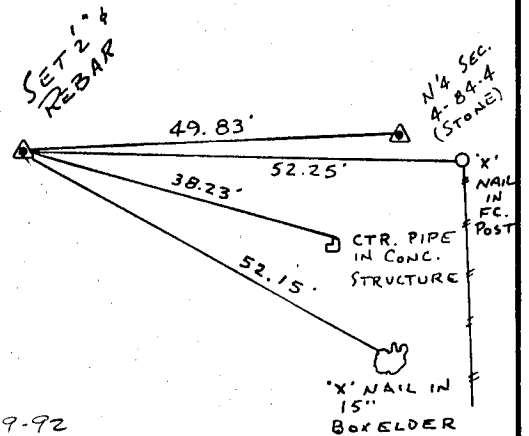


ONCARD 3-9-92



NOT TO SCALE

S'4 COR 33-85-4



3-9-92

I, GLEN D. MEISNER, CERTIFY THAT THE CORNER LOCATION(S) SHOWN ON THIS RECORD WERE DETERMINED BY ME OR UNDER MY DIRECTION AND CONTROL AND THAT THIS U.S. PUBLIC LAND SURVEY MONUMENT RECORD IS CORRECT AND COMPLETE TO THE BEST OF MY KNOWLEDGE AND BELIEF.

Glen D. Meisner 2-18-92
 GLEN D. MEISNER L.S. NO 8165 DATE



DZ1001	GOVERNMENT CORNER 5/8" TIE PIN SET CENTERLINE EXISTING FENCE LINE R.O.W. LINE	SHEET TITLE: U.S. PUBLIC LAND SURVEY RECORD PROJECT TITLE: GEORGE CASPERS SURVEY	H HALL AND HALL ENGINEERS, INC. 226 29TH STREET DRIVE S.E. CEDAR RAPIDS, IOWA 52403 319-362-9548			
	DW N R.W.B.	CHK G.D.M.		APP	DATE 1-17-92	SCALE NONE