

UNITED STATES PUBLIC LAND SURVEY CORNER CERTIFICATE

OF

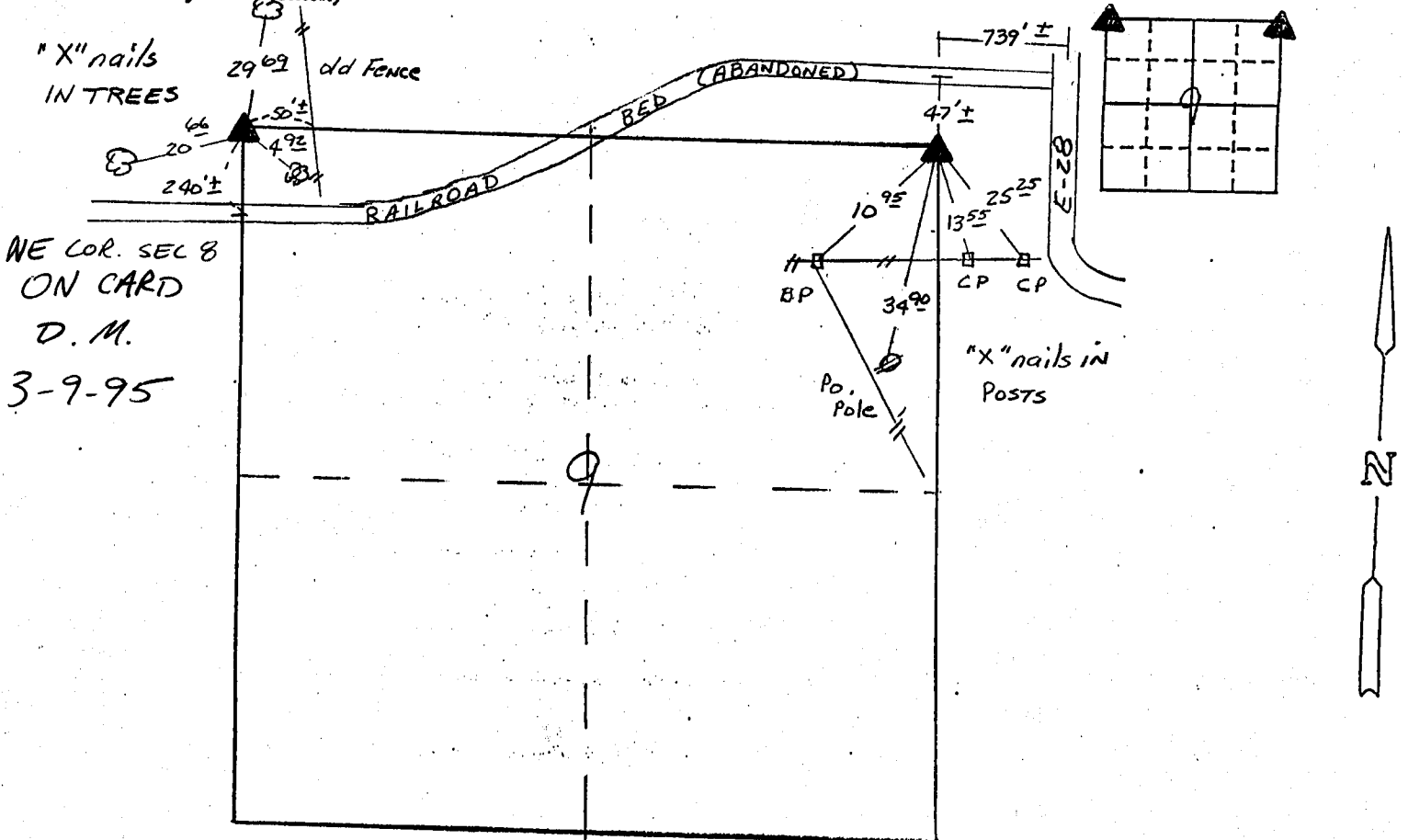
Land Survey Monuments situated in Section 9, Township 84 N, Range 4 W, of the Fifth Principal Meridian, JONES County, Iowa.
Previously recorded in N/A in County Recorder's Office.

(book, page, document number, etc.)
(Show reason for preparing this certificate, the evidence and detailed procedures used in establishing the corner positions and monumentation found or placed.)

Monument Description and Remarks: NW COR - Set 1/2" IRON PIN W/CAP
10908 40 CHAINS FROM W 1/4 CORNER AND AT THE
PROPORTIONED DISTANCE BETWEEN THE NW COR. AND
NE COR. NE COR - FOUND CONCRETE MONUMENT

PLAN - VIEW

(Show a minimum of three reference ties to durable physical objects, relevant monuments and physical conditions that will enable recovery of the corner.)



NE COR. SEC 8
ON CARD
D. M.
3-9-95

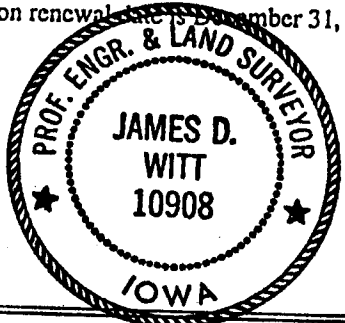
I hereby certify that the survey work was completed and this land surveying document was prepared by me or under my direct personal supervision and that I am a duly registered land surveyor under the laws of the state of Iowa

Signature: James D. Witt
Name typed or printed: JAMES D. WITT

Date: 1-27-95 Reg. No. 10908

My registration renewal date is December 31, 1995

SEAL



Corners	List Corners to be Indexed		
	Section	Twp	Range
NW	9	84	4
NE	9	84	4