

Instrument #: 2014-0957
 04/22/2014 09:08:04 AM Total Pages: 1
 ZSC SECTION CORNER CERTIFICATE
 Recording Fee: \$7.00 Transfer Tax: \$0
 Marie Krutzfield, Recorder, Jones County Iowa



RETURN TO &
 PREPARED BY: LEO P. BONIFAZI SCHNOOR-BONIFAZI ENGINEERING & SURVEYING LC, 431 FIFTH AVENUE SW, CEDAR RAPIDS, IA 52404 319-298-8888

UNITED STATES PUBLIC LAND SURVEY CORNER CERTIFICATE

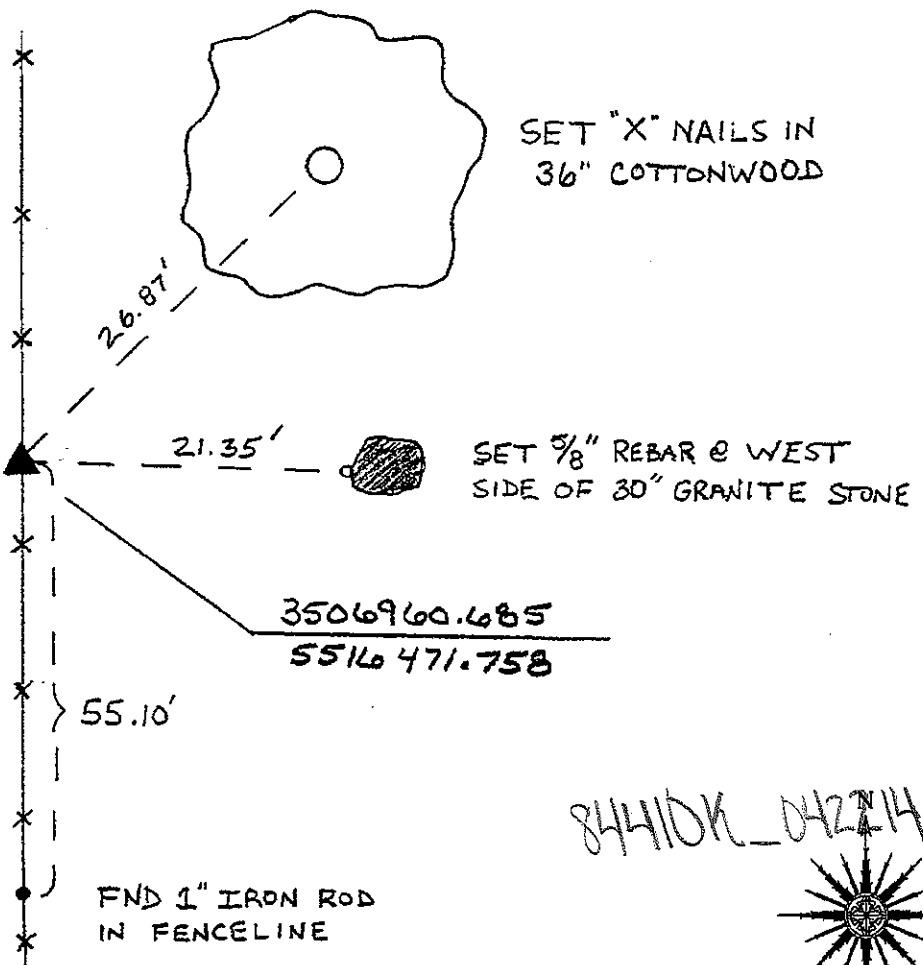
Land Survey Monuments Situated in Section 10, Township 84 North, Range 4 of the Fifth Principal Meridian, JONES County, Iowa.

Reason for filing: a. No certificate of record found. b. Monument or ties found differ from record. c. Replaced section corner.

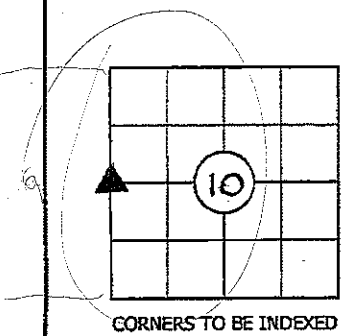
END 1 1/2" DIA WAGON AXLE IN LINE WITH FENCE RUNNING NORTH AND SOUTH. END MONUMENT FORMS A STRAIGHT LINE WITH THE E 1/4 CORNER AND THE NW COR. OF THE NE 1/4 SE 1/4 AND IS IN REASONABLE COMPLIANCE WITH DISTANCES DESCRIBED IN BOOK 168, PG 389 REGARDING THE SOUTHWEST BOUNDARY FENCE OF DR. JOHN BAILEY'S PROPERTY.

NO MONUMENT FOUND AT CENTER OF SECTION DESPITE SEVERAL SEARCHES AND A CORNER CERTIFICATE TO THE CONTRARY.

COORDINATES LISTED HEREON ARE DERIVED FROM THE IOWA DEPARTMENT OF TRANSPORTATION REAL TIME NETWORK COLLECTED IN THE NAD83(2011) (Epoch 2010.0000) NETWORK REF FRAME.

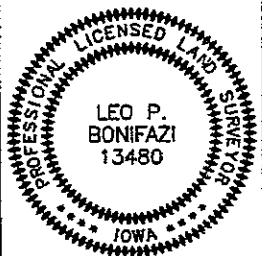


84410K_042214



W 1/4 10-84-4

JOB: 14009
 DRAWN: DPT
 NOT TO SCALE
 DATE: 4-21-14



I HEREBY CERTIFY THAT THIS LAND SURVEYING DOCUMENT WAS PREPARED AND THE RELATED SURVEY WORK WAS PERFORMED BY ME OR UNDER MY DIRECT PERSONAL SUPERVISION AND THAT I AM A DULY LICENSED LAND SURVEYOR UNDER THE LAWS OF THE STATE OF IOWA.

SIGNATURE: [Signature] DATE: 4/22-14
 LEO P. BONIFAZI
 LICENSE NO. 13480
 SHEETS COVERED BY THIS SEAL: THIS SHEET ONLY

MY LICENSE RENEWAL DATE IS DECEMBER 31, 2015

SCHNOOR-BONIFAZI
 ENGINEERING & SURVEYING, LC
 431 FIFTH AVENUE SW
 CEDAR RAPIDS, IA 52404
 (319) 298-8888 (PHONE)
 s-b-engineering.com



☐☐
 Jones County Marie Krutzfield Recorder
 Fee Book 2011 1444
 06/02/2011 @0155PM # Pages 1
 ZSC SEC COR CERT
 Total Fees: \$0.00

PREPARED BY

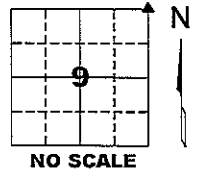
CLARENCE J. WALTON, JONES COUNTY ENGINEER'S OFFICE, 19501 HWY. 64, ANAMOSA, IOWA, 52205 (319) 462-3785

UNITED STATES PUBLIC LAND SURVEY CORNER CERTIFICATE

LAND SURVEY MONUMENTS SITUATED IN SECTION 9, TOWNSHIP 84 NORTH,
 RANGE 4 WEST OF THE 5TH PRINCIPAL MERIDIAN, JONES COUNTY, IOWA.

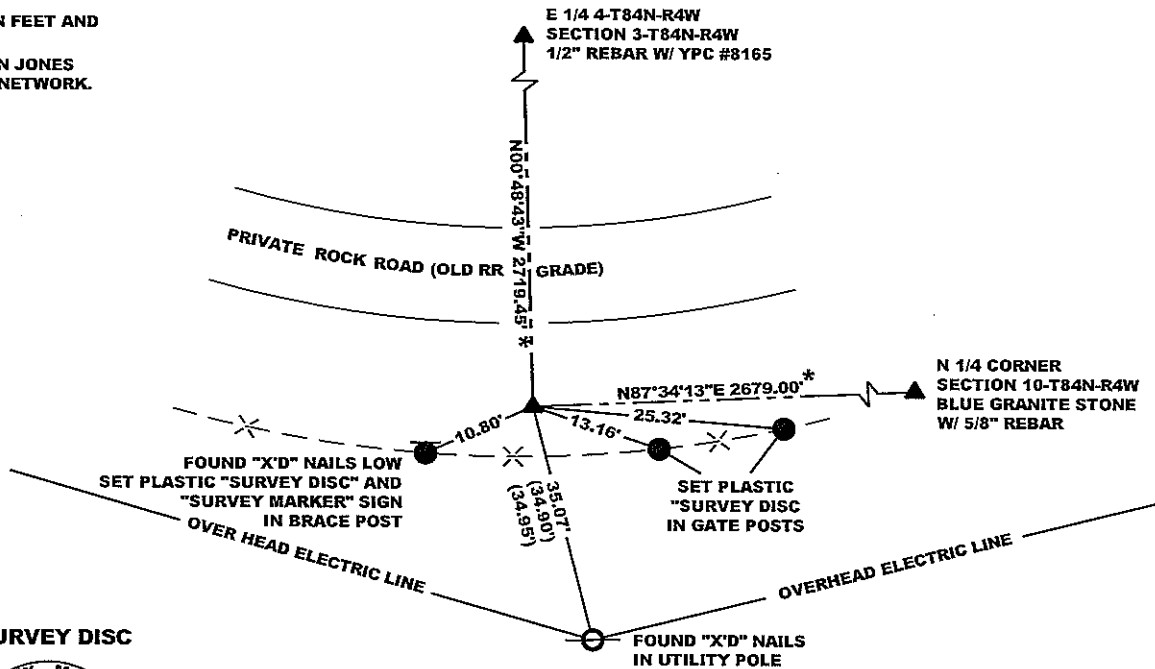
STATE PLANE COORDINATE
 NAD 83 IOWA NORTH
 N 3509643.93
 E 5516390.42

CORNER SECTION TOWNSHIP RANGE
 NE CORNER 9 T84N R4W



NOTES:

- 1) THE STATE PLANE COORDINATES AS SHOWN ARE FOR CONVENIENCE ONLY. THE TIES AS SHOWN SHOULD BE USED TO REPLACE THE CORNER, IF DESTROYED.
- 2) COORDINATES AS SHOWN ARE GRID COORDINATES AND BASED ON JONES COUNTY G.P.S. CONTROL NETWORK WHICH IN TURN IS BASED ON NAD 83 IOWA NORTH DATUM.
- 3) ALL MEASUREMENTS ARE IN FEET AND DECIMALS THEREOF.
- 4) * GRID DISTANCE, BASED ON JONES COUNTY G.P.S. CONTROL NETWORK.



"SURVEY MARKER" SIGN

PLEASE PROTECT NEARBY SURVEY MARKER
 IF LOCATION OF THIS MARK IS ENDANGERED PLEASE CONTACT JONES COUNTY ENGINEER'S OFFICE 319-462-3785



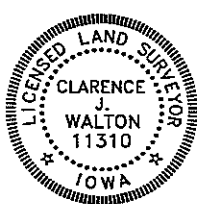
LEGEND

- OPC ORANGE PLASTIC CAP
- YPC YELLOW PLASTIC CAP
- () RECORDED AS

PREVIOUSLY RECORDED IN BOOK 314, PAGE 345

MONUMENT DESCRIPTION AND HOW ESTABLISHED PER CORNER CERTIFICATE OF RECORD, FOUND 4"X4" CONCRETE MONUMENT W/ BRASS DISC 12" BELOW PRESENT GROUND SURFACE OF CULTIVATED FIELD. SET "SURVEY MARKER" SIGN ON BRACE POST (SHOWN) AS WITNESS TO MONUMENT. BY 5/8" REBAR TO AID WITH DETECTION.

FIELD BOOK 333, PAGE 79. DATE OF SURVEY: 4/11/11



I hereby certify that this land surveying document and the related survey work was performed by me or under my direct personal supervision and that I am a duly registered Land Surveyor under the laws of the State of Iowa.
 Signed: *Clarence J. Walton* 6/3/11

Clarence J. Walton, L.S.
 My Registration Renewal Date is December 31, 2011
 Iowa License Number 11310
 Pages or sheets covered by this seal: Pages 1 of 1.

- A. THERE IS NO CERTIFICATE FOR THE CORNER ON FILE WITH THE RECORDER OF THE COUNTY IN WHICH THE CORNER IS LOCATED.
- B. THE CORNER MONUMENT HAS BEEN REPLACED OR MODIFIED.
- C. THE SURVEYOR IN RESPONSIBLE CHARGE OF THE LAND SURVEYING ACCEPTS A CORNER POSITION THAT DIFFERS FROM THAT SHOWN IN THE PUBLIC RECORDS OF THE COUNTY IN WHICH THE CORNER IS LOCATED.
- D. THE REFERENCE TIES REFERRED TO IN AN EXISTING PUBLIC RECORD NO LONGER EXIST.
- E. EXISTING CORNER TIES UPDATED.

CORNERS TO BE INDEXED

| CORNER | SECTION | TOWNSHIP | RANGE |
|-----------|---------|----------|-------|
| NE CORNER | 9 | 84N | 4W |
| SE CORNER | 4 | 84N | 4W |
| SW CORNER | 3 | 84N | 4W |
| NW CORNER | 10 | 84N | 4W |

JONES COUNTY ENGINEER'S OFFICE



19501 HWY. 64, ANAMOSA, IOWA 52205
 (319) 462-3785

UNITED STATES PUBLIC LAND SURVEY CORNER CERTIFICATE

OF

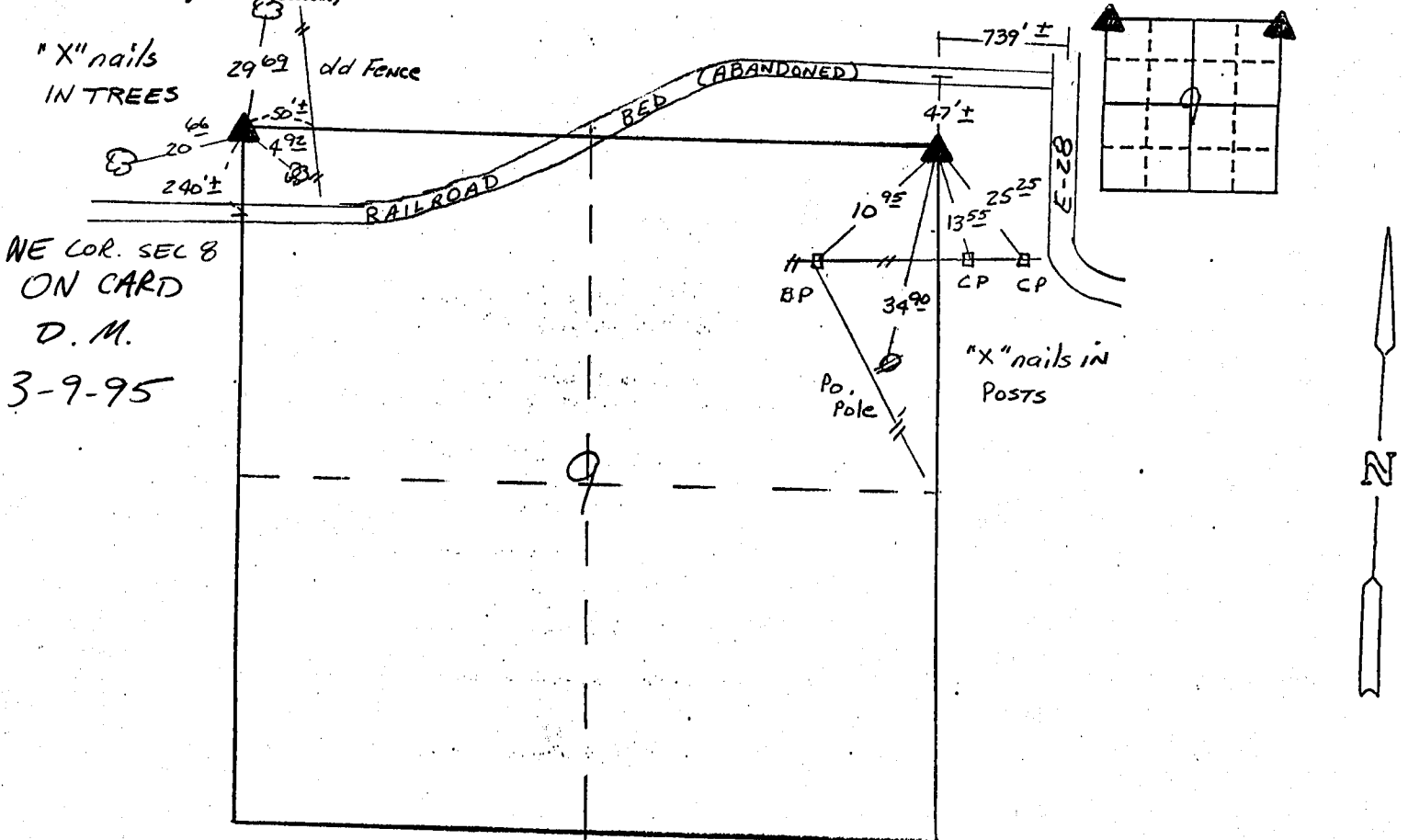
Land Survey Monuments situated in Section 9, Township 84 N, Range 4 W, of the Fifth Principal Meridian, JONES County, Iowa.
Previously recorded in N/A in County Recorder's Office.

(Show reason for preparing this certificate, the evidence and detailed procedures used in establishing the corner positions and monumentation found or placed.)

Monument Description and Remarks: NW COR - Set 1/2" IRON PIN W/CAP
10908 40 CHAINS FROM W 1/4 CORNER AND AT THE
PROPORTIONED DISTANCE BETWEEN THE NW COR. AND
NE COR. NE COR - FOUND CONCRETE MONUMENT

PLAN - VIEW

(Show a minimum of three reference ties to durable physical objects, relevant monuments and physical conditions that will enable recovery of the corner.)

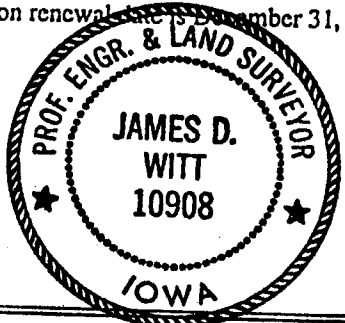


I hereby certify that the survey work was completed and this land surveying document was prepared by me or under my direct personal supervision and that I am a duly registered land surveyor under the laws of the state of Iowa

Signature: James D. Witt
Name typed or printed: JAMES D. WITT

Date: 1-27-95 Reg. No. 10908

My registration renewal date is December 31, 1995



SEAL

| Corners | List Corners to be Indexed | | |
|---------|----------------------------|-----|-------|
| | Section | Twp | Range |
| NW | 9 | 84 | 4 |
| NE | 9 | 84 | 4 |

SECTION CORNER CERTIFICATE

OF
 LAND SURVEY MONUMENTS SITUATED IN SECTION 3, TOWNSHIP 84 NORTH,
 RANGE 4 WEST, OF THE FIFTH PRINCIPAL MERIDIAN, JONES, COUNTY, IOWA.

PREVIOUSLY RECORDED IN BOOK _____ AT PAGE _____ .

FOR RECORDER'S USE

REASON FOR PREPARING CERTIFICATE:

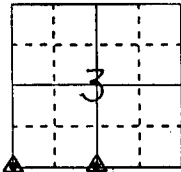
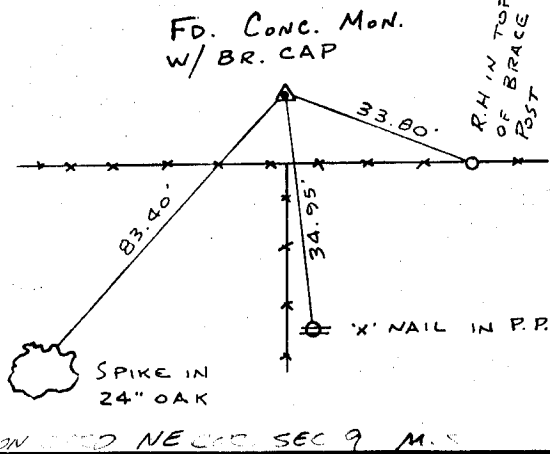
- A) THERE IS NO CERTIFICATE FOR THE CORNER ON FILE WITH THE RECORDER OF THE COUNTY IN WHICH THE CORNER IS LOCATED.
- B) CORNER POSITION DIFFERS FROM THAT SHOWN IN THE PUBLIC RECORDS OF THE COUNTY IN WHICH THE CORNER IS LOCATED.
- C) THE CORNER MONUMENT HAS BEEN REPLACED OR MODIFIED.
- D) THE REFERENCE TIES REFERRED TO IN AN EXISTING PUBLIC RECORD ARE INCORRECT.

MONUMENT DESCRIPTION AND REMARKS :

S.W. CORNER SECTION 3-T84N-R4W FOUND CONC. MON. W/ BRASS CAP
10" DEEP ALONG SOUTH R.O.W. OF ABANDONED RAILROAD
S/4 CORNER SECTION 3-T84N-R4W FOUND 5/8" REBAR NEXT TO STONE
15" DEEP IN CORNFIELD

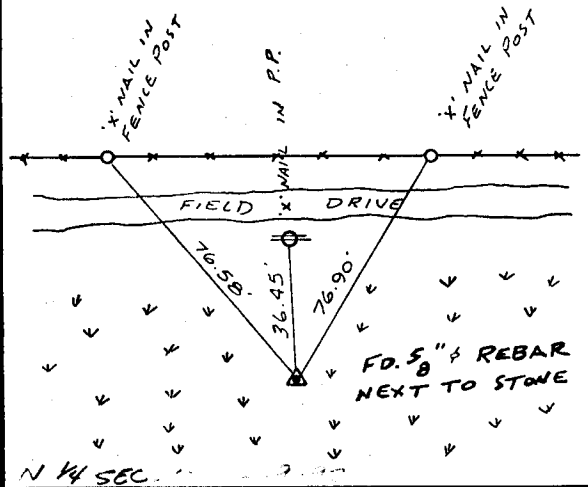
RECOVERY TIE DRAWING

S.W. Cor 3-84-4

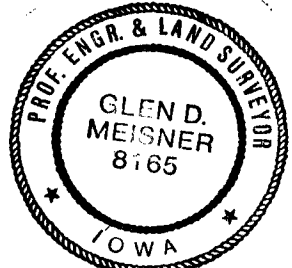


NOT TO SCALE

S/4 Cor. 3-84-4



I, GLEN D. MEISNER, - CERTIFY THAT THE CORNER LOCATION(S) SHOWN ON THIS RECORD WERE DETERMINED BY ME OR UNDER MY DIRECTION AND CONTROL AND THAT THIS U.S. PUBLIC LAND SURVEY MONUMENT RECORD IS CORRECT AND COMPLETE TO THE BEST OF MY KNOWLEDGE AND BELIEF.



Glen D. Meisner 2-18-92
 GLEN D. MEISNER L.S. NO 8165 DATE

- LEGEND**
- GOVERNMENT CORNER
 - 5/8" TIE PIN SET
 - CENTERLINE
 - EXISTING FENCE LINE
 - R.O.W. LINE

SHEET TITLE: U.S. PUBLIC LAND SURVEY RECORD

PROJECT TITLE: GEORGE CASPERS SURVEY

HALL AND HALL ENGINEERS, INC.
 226 29TH STREET DRIVE S.E.
 CEDAR RAPIDS, IOWA 52403
 319-362-9548

D W N R.W.B.

C K G.D.M.

A P P

D A T E 1-17-92

S C A L E None

F N O B DT 22

P N O P R O J 4466