

COPY

Jones County Iowa  
Marie Krutzfield, Recorder  
Fee Book 2010 3637

12/22/2010 @1205PM  
ZSC SEC COR CERT  
Book: Page: # Pages: 1  
Total Fees:

PREPARED BY

CLARENCE J. WALTON, JONES COUNTY ENGINEER'S OFFICE, 19501 HWY. 64, ANAMOSA, IOWA, 52205 (319) 462-3785

# AMENDED UNITED STATES PUBLIC LAND SURVEY CORNER CERTIFICATE

LAND SURVEY MONUMENTS SITUATED IN SECTION 10, TOWNSHIP 83 NORTH, RANGE 4 WEST OF THE 5TH PRINCIPAL MERIDIAN, JONES COUNTY, IOWA.

"SURVEY MARKER" SIGN

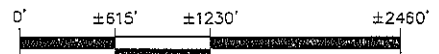
PLEASE PROTECT NEARBY SURVEY MARKER  
IF LOCATION OF THIS MARK IS ENDANGERED PLEASE CONTACT JONES COUNTY ENGINEER'S OFFICE 319-462-3785

NOTES:

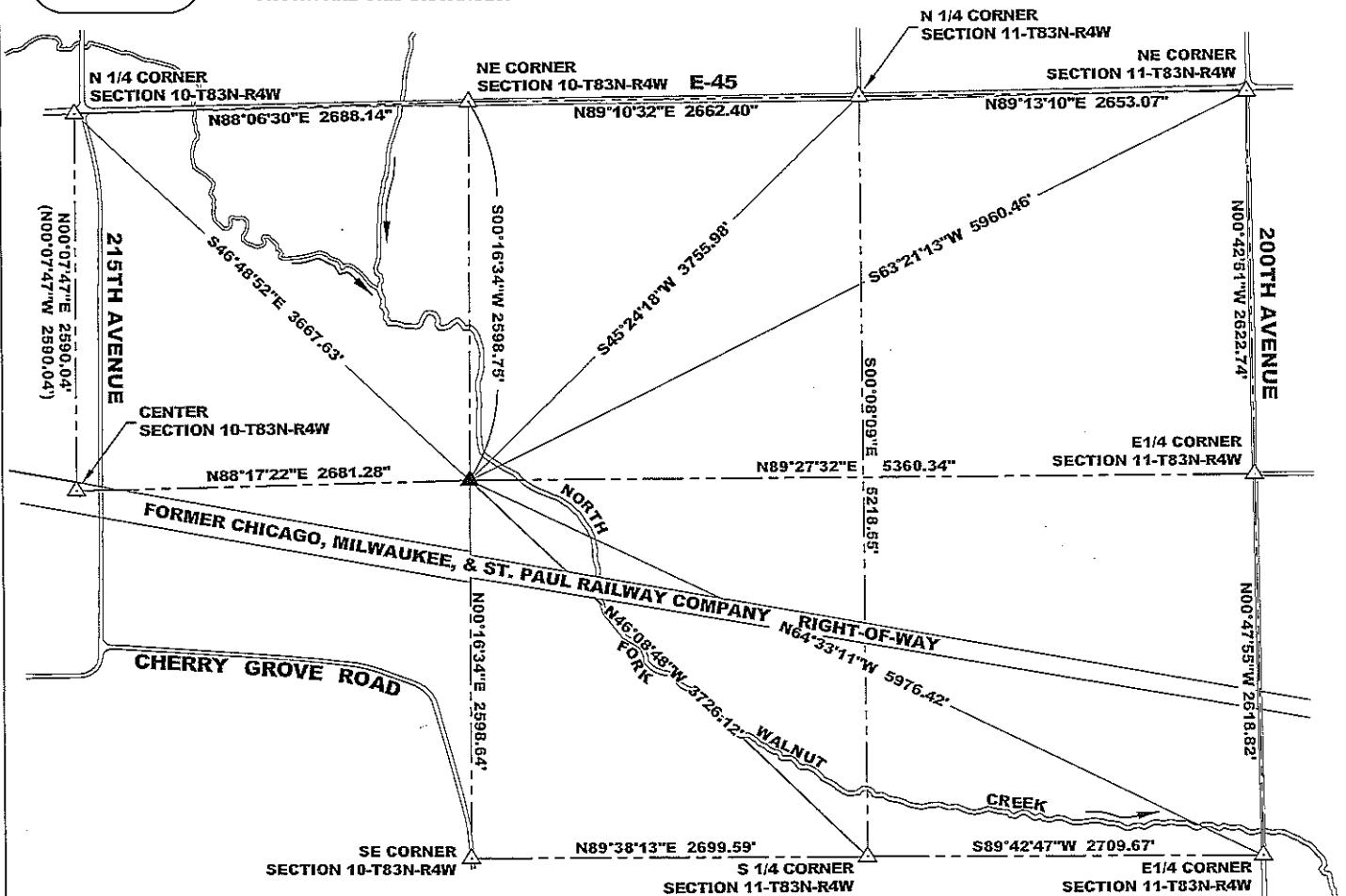
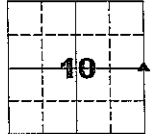
- 1) THE STATE PLANE COORDINATES AS SHOWN ARE FOR CONVENIENCE ONLY. THE TIES AS SHOWN SHOULD BE USED TO REPLACE THE CORNER, IF DESTROYED.
- 2) COORDINATES AS SHOWN ARE GRID COORDINATES AND BASED ON JONES COUNTY G.P.S. CONTROL NETWORK WHICH IN TURN IS BASED ON NAD 83 IOWA NORTH DATUM.
- 3) BASIS OF BEARINGS ARE BASED ON JONES COUNTY G.P.S. CONTROL NETWORK.
- 4) ALL MEASUREMENTS ARE IN FEET AND DECIMALS THEREOF. LONG DISTANCES SHOWN ARE GRID DISTANCES.
- 5) THIS AMENDED CORNER CERTIFICATE SUPERSEDES THAT WHICH IS RECORDED IN RECORDER'S DOCUMENT 2010 3468 IN JONES COUNTY, IOWA RECORDER'S OFFICE.

OPC ORANGE PLASTIC CAP  
( ) RECORDED AS

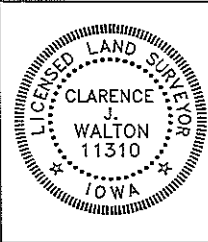
STATE PLANE COORDINATE  
NAD 83 IOWA NORTH  
N 3475696.04  
E 5522347.36



APPROXIMATE SCALE: 1" = ±1230'



PREVIOUSLY RECORDED IN RECORDER'S DOCUMENT 2010 3468  
MONUMENT DESCRIPTION AND HOW ESTABLISHED FOUND 5/8" X 24" REBAR WITH ORANGE PLASTIC CAP #14807 FLUSH WITH EXISTING GROUND SURFACE PER RECORD TIES IN RECORDER'S DOCUMENT 2005 4155 IN THE JONES COUNTY, IOWA RECORDER'S OFFICE.  
FIELD BOOK MISC. 2009-2010, PAGE 143. DATE OF SURVEY: 11/19/10



I hereby certify that this land surveying document and the related survey work was performed by me or under my direct personal supervision and that I am a duly registered Land Surveyor under the laws of the State of Iowa.  
Signed: *Clarence J. Walton* 12/20/10  
Clarence J. Walton, L.S.  
My Registration Renewal Date is December 31, 2011  
Iowa License Number 11310  
Pages or sheets covered by this seal: 1 of 1.

- A. THERE IS NO CERTIFICATE FOR THE CORNER ON FILE WITH THE RECORDER OF THE COUNTY IN WHICH THE CORNER IS LOCATED.
- B. THE CORNER MONUMENT HAS BEEN REPLACED OR MODIFIED.
- C. THE SURVEYOR IN RESPONSIBLE CHARGE OF THE LAND SURVEYING ACCEPTS A CORNER POSITION THAT DIFFERS FROM THAT SHOWN IN THE PUBLIC RECORDS OF THE COUNTY IN WHICH THE CORNER IS LOCATED.
- D. THE REFERENCE TIES REFERRED TO IN AN EXISTING PUBLIC RECORD NO LONGER EXIST.
- PROVIDED STATE PLANE COORDINATES AND TIED IN EASILY ACCESSIBLE SECTION CORNERS.

CORNERS TO BE INDEXED

CORNER	SECTION	TOWNSHIP	RANGE
E 1/4 CORNER	10	83N	4W
W 1/4 CORNER	11	83N	4W

JONES COUNTY ENGINEER'S OFFICE



19501 HWY. 64, ANAMOSA, IOWA 52205  
(319) 462-3785

COPY

Jones County Iowa  
 Marie Krutzfield, Recorder  
 Fee Book 2010 3468

12/13/2010 @1208PM  
 ZSC SEC COR CERT  
 Book: Page: # Pages: 1  
 Total Fees: \$0.00

PREPARED BY  
 CLARENCE J. WALTON, JONES COUNTY ENGINEER'S OFFICE, 19501 HWY. 64, ANAMOSA, IOWA, 52205 (319) 462-3785

# UNITED STATES PUBLIC LAND SURVEY CORNER CERTIFICATE

LAND SURVEY MONUMENTS SITUATED IN SECTION 10, TOWNSHIP 83 NORTH,  
 RANGE 4 WEST OF THE 5TH PRINCIPAL MERIDIAN, JONES COUNTY, IOWA.

"SURVEY MARKER"  
 SIGN

PLEASE  
 PROTECT  
 NEARBY  
**SURVEY  
 MARKER**  
 IF LOCATION OF THIS MARK  
 IS ENDANGERED  
 PLEASE CONTACT  
 JONES COUNTY  
 ENGINEER'S OFFICE  
 319-462-3785

NOTES:

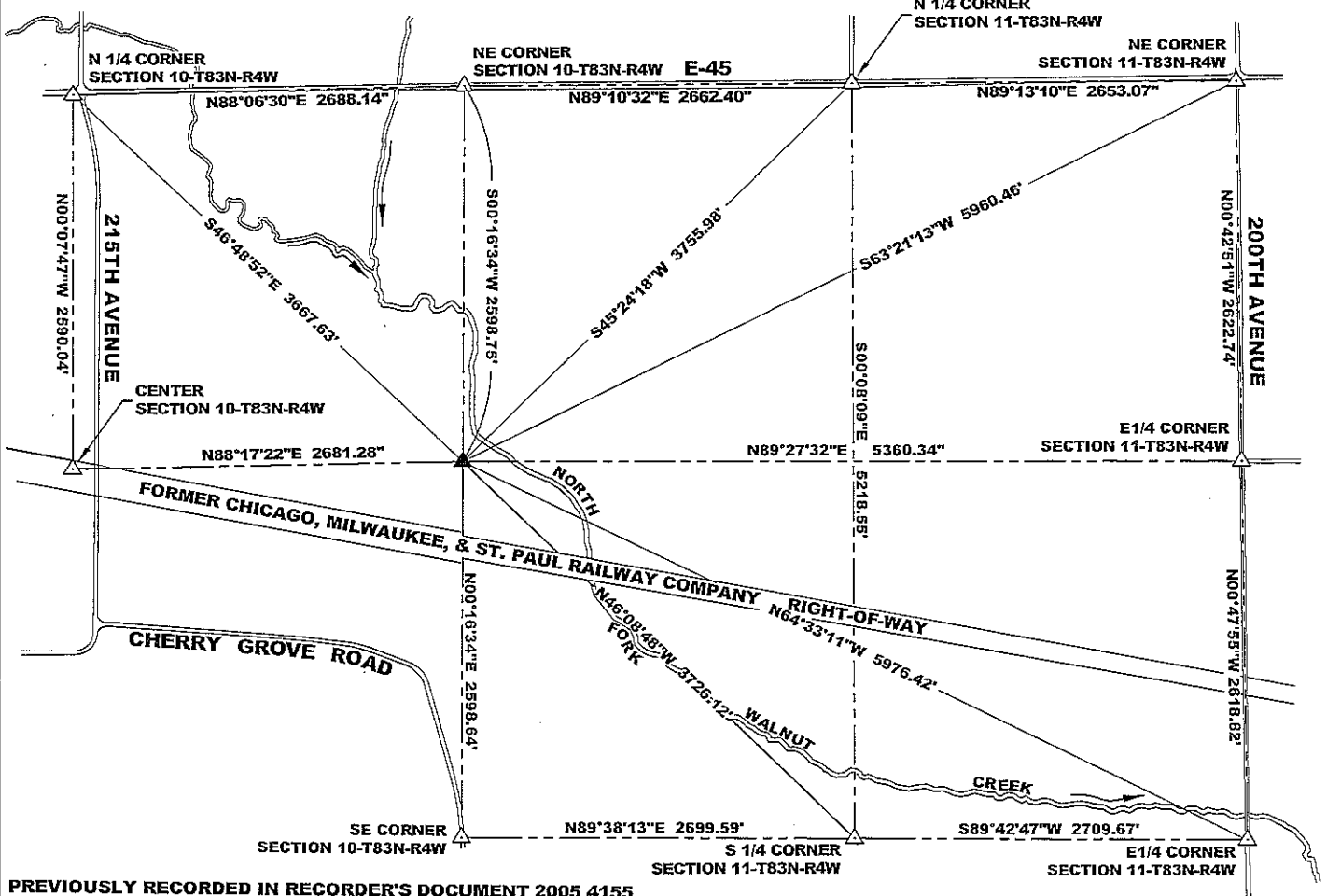
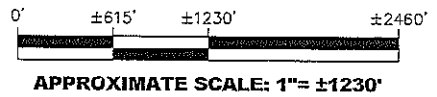
- 1) THE STATE PLANE COORDINATES AS SHOWN ARE FOR CONVENIENCE ONLY. THE TIES AS SHOWN SHOULD BE USED TO REPLACE THE CORNER, IF DESTROYED.
- 2) COORDINATES AS SHOWN ARE GRID COORDINATES AND BASED ON JONES COUNTY G.P.S. CONTROL NETWORK WHICH IN TURN IS BASED ON NAD 83 IOWA NORTH DATUM.
- 3) BASIS OF BEARINGS ARE BASED ON JONES COUNTY G.P.S. CONTROL NETWORK.
- 4) ALL MEASUREMENTS ARE IN FEET AND DECIMALS THEREOF. LONG DISTANCES SHOWN ARE GRID DISTANCES.

CORNER SECTION TOWNSHIP RANGE  
 E 1/4 CORNER 10 T83N R4W

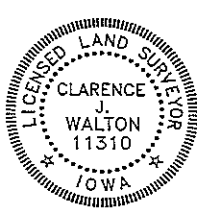
PROJECT: M-1211



STATE PLANE COORDINATE  
 NAD 83 IOWA NORTH  
 N 3475696.04  
 E 5522347.36



PREVIOUSLY RECORDED IN RECORDER'S DOCUMENT 2005 4155  
 MONUMENT DESCRIPTION AND HOW ESTABLISHED FOUND 5/8"X24" REBAR WITH ORANGE PLASTIC CAP #14807 FLUSH WITH EXISTING GROUND SURFACE PER RECORD TIES IN RECORDER'S DOCUMENT 2005 4155 IN THE JONES COUNTY, IOWA RECORDER'S OFFICE.  
 FIELD BOOK MISC. 2009-2010, PAGE 143. DATE OF SURVEY: 11/19/10



I hereby certify that this land surveying document and the related survey work was performed by me or under my direct personal supervision and that I am a duly registered Land Surveyor under the laws of the State of Iowa.  
 Signed: *Clarence J. Walton* 12/9/10  
 Clarence J. Walton, L.S.  
 My Registration Renewal Date is December 31, 2011  
 Iowa License Number 11310  
 Pages or sheets covered by this seal: 1 of 1.

- A. THERE IS NO CERTIFICATE FOR THE CORNER ON FILE WITH THE RECORDER OF THE COUNTY IN WHICH THE CORNER IS LOCATED.
- B. THE CORNER MONUMENT HAS BEEN REPLACED OR MODIFIED.
- C. THE SURVEYOR IN RESPONSIBLE CHARGE OF THE LAND SURVEYING ACCEPTS A CORNER POSITION THAT DIFFERS FROM THAT SHOWN IN THE PUBLIC RECORDS OF THE COUNTY IN WHICH THE CORNER IS LOCATED.
- D. THE REFERENCE TIES REFERRED TO IN AN EXISTING PUBLIC RECORD NO LONGER EXIST.
- PROVIDED STATE PLANE COORDINATES AND TIED IN EASILY ACCESSIBLE SECTION CORNERS.

CORNERS TO BE INDEXED			
CORNER	SECTION	TOWNSHIP	RANGE
E 1/4 CORNER	10	83N	4W
W 1/4 CORNER	11	83N	4W

**JONES COUNTY ENGINEER'S OFFICE**  
  
 19501 HWY. 64, ANAMOSA, IOWA 52205  
 (319) 462-3785

2005 4155

FILED  
RECORDERS OFFICE  
JONES COUNTY IOWA

05 NOV 17 AM 9:03

MARIE KRUTZFIELD  
RECORDER *no fee*

*GREENFIELD*

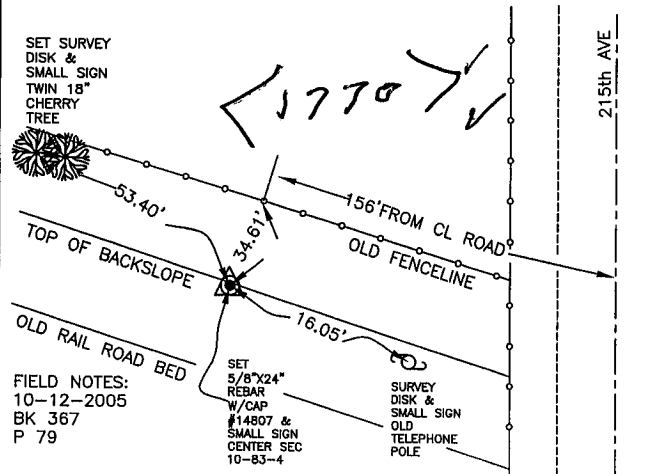
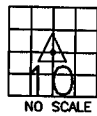
J.D. TJEKES, LS. JONES COUNTY ENGINEER'S OFFICE, 19501 HWY. 64, ANAMOSA, IOWA, 52205 (319)462-3785

# UNITED STATES PUBLIC LAND SURVEY CORNER CERTIFICATE

LAND SURVEY MONUMENTS SITUATED IN SECTION 10, TOWNSHIP 83  
NORTH, RANGE 4 WEST OF THE 5TH P.M., JONES COUNTY, IOWA

### CORNERS TO BE INDEXED

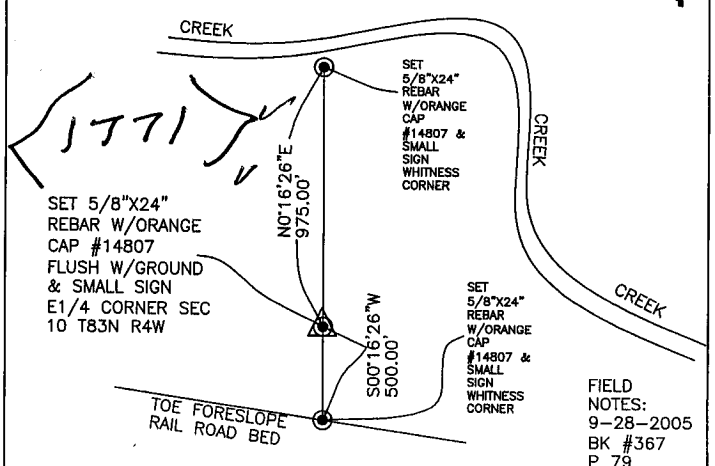
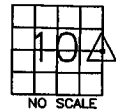
CORNER SECTION TOWNSHIP RANGE  
CENTER 10 83N 4W  
OFFICE FILE NO.  
83410m\_111605.tif



PREVIOUSLY RECORDED IN BOOK NA, PAGE NA  
MONUMENT DESCRIPTION AND HOW ESTABLISHED  
PER BREAKDOWN OF SECTION 10 T83N R4W, SET 5/8\"X24\" REBAR W/ORANGE CAP #14807 & JONES COUNTY SIGN ON POST, TOP OF NORTH BACKSLOPE OLD RAIL ROAD CUT. TIES AS INDICATED FOR CENTER SECTION 10 T83N R4W.

### CORNERS TO BE INDEXED

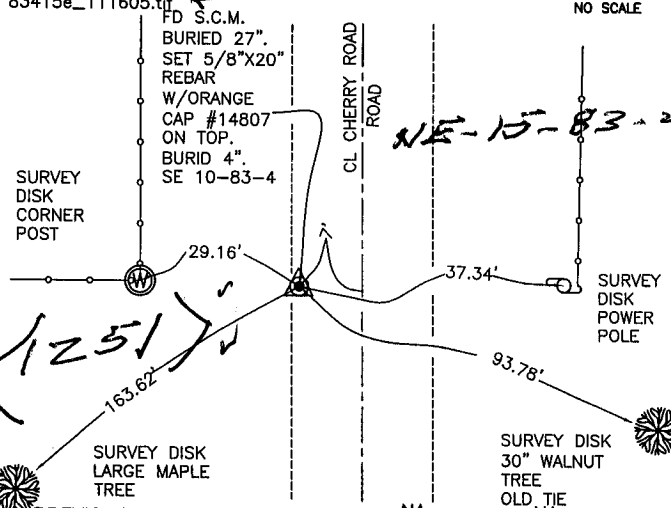
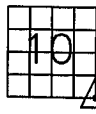
CORNER SECTION TOWNSHIP RANGE  
E1/4 10 83N 4W  
OFFICE FILE NO.  
83410o\_111605.tif



PREVIOUSLY RECORDED IN BOOK NA, PAGE NA  
MONUMENT DESCRIPTION AND HOW ESTABLISHED  
PER PROPORTIONATE DISTANCE AND ON LINE BETWEEN FD S.C.M. PER RECORD TIES, SE CORNER SEC 10 AND FD BRASS PLUG, PER RECORD TIES, NE CORNER SEC 10, SET 5/8\"X24\" REBAR W/ORANGE CAP #14807, FLUSH W/GROUND. TIES AS INDICATED FOR E1/4 COR. SECTION 10 T83N R4W.

### CORNERS TO BE INDEXED

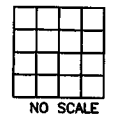
CORNER SECTION TOWNSHIP RANGE  
SE COR 10 83N 4W  
OFFICE FILE NO.  
83415e\_111605.tif



PREVIOUSLY RECORDED IN BOOK NA, PAGE NA  
MONUMENT DESCRIPTION AND HOW ESTABLISHED

### CORNERS TO BE INDEXED

CORNER SECTION TOWNSHIP RANGE  
OFFICE FILE NO.



PREVIOUSLY RECORDED IN BOOK NA, PAGE NA

NOT A CERTIFICATE

J.D. TJEPKES, LS. JONES COUNTY ENGINEER'S OFFICE, 19501 HWY. 64, ANAMOSA, IOWA, 52205 (319)462-3785

# UNITED STATES PUBLIC LAND SURVEY CORNER CERTIFICATE

LAND SURVEY MONUMENTS SITUATED IN SECTION 10, TOWNSHIP 83  
NORTH, RANGE 4 WEST OF THE 5TH P.M., JONES COUNTY, IOWA

**CORNERS TO BE INDEXED**

CORNER	SECTION	TOWNSHIP	RANGE
CENTER	10	83N	4W

OFFICE FILE NO. 83410m\_111605.tif

FIELD NOTES: 10-12-2005 BK 367 P 79

PREVIOUSLY RECORDED IN BOOK NA, PAGE NA

MONUMENT DESCRIPTION AND HOW ESTABLISHED

PER BREAKDOWN OF SECTION 10 T83N R4W, SET 5/8"X24" REBAR W/ORANGE CAP #14807 & JONES COUNTY SIGN ON POST, TOP OF NORTH BACKSLOPE OLD RAIL ROAD CUT. TIES AS INDICATED FOR CENTER SECTION 10 T83N R4W.

**CORNERS TO BE INDEXED**

CORNER	SECTION	TOWNSHIP	RANGE
E1/4	10	83N	4W

OFFICE FILE NO. 83410o\_111605.tif

FIELD NOTES: 9-28-2005 BK #367 P 79

PREVIOUSLY RECORDED IN BOOK NA, PAGE NA

MONUMENT DESCRIPTION AND HOW ESTABLISHED

PER PROPORTIONATE DISTANCE AND ON LINE BETWEEN FD S.C.M, PER RECORD TIES, @ SE CORNER SEC 10 AND FD BRASS PLUG, PER RECORD TIES, @ NE CORNER SEC 10, SET 5/8"X24" REBAR W/ORANGE CAP #14807, FLUSH W/GROUND. TIES AS INDICATED FOR E1/4 COR. SECTION 10 T83N R4W.

**CORNERS TO BE INDEXED**

CORNER	SECTION	TOWNSHIP	RANGE
SE COR	10	83N	4W

OFFICE FILE NO. 83415e\_111605.tif

FIELD NOTES: 10-12-2005 BK 367 P 79

PREVIOUSLY RECORDED IN BOOK NA, PAGE NA

MONUMENT DESCRIPTION AND HOW ESTABLISHED

PER OLD TIES ON RECORD AT ENGINEER'S OFFICE DATED 1936, DUG AND FOUND CONCRETE MONUMENT BURIED 27" ON WEST SHOULDER LINE. SET 5/8"X20" REBAR W/ORANGE CAP #14807 ON TOP OF MONUMENT. TOP OF REBAR BURIED 4". TIES AS INDICATED FOR SE CORNER SECTION 10 T83N R4W.

**CORNERS TO BE INDEXED**

CORNER	SECTION	TOWNSHIP	RANGE

OFFICE FILE NO.

PREVIOUSLY RECORDED IN BOOK \_\_\_\_\_, PAGE \_\_\_\_\_

MONUMENT DESCRIPTION AND HOW ESTABLISHED

I hereby declare that this plat, survey or report was made by me or under my direct personal supervision and that I am a duly registered Land Surveyor under the laws of the State of Iowa.

Signed: \_\_\_\_\_

Joseph D. Tjepkes L.S. Iowa Reg. No. 14807  
My Registration Renewal Date is December 31, 2006

SEAL

J.D. TJEPKES LS 14807  
JONES COUNTY  
ENGINEER'S OFFICE

19501 HWY. 64,  
ANAMOSA, IOWA,  
52205 (319)462-3785