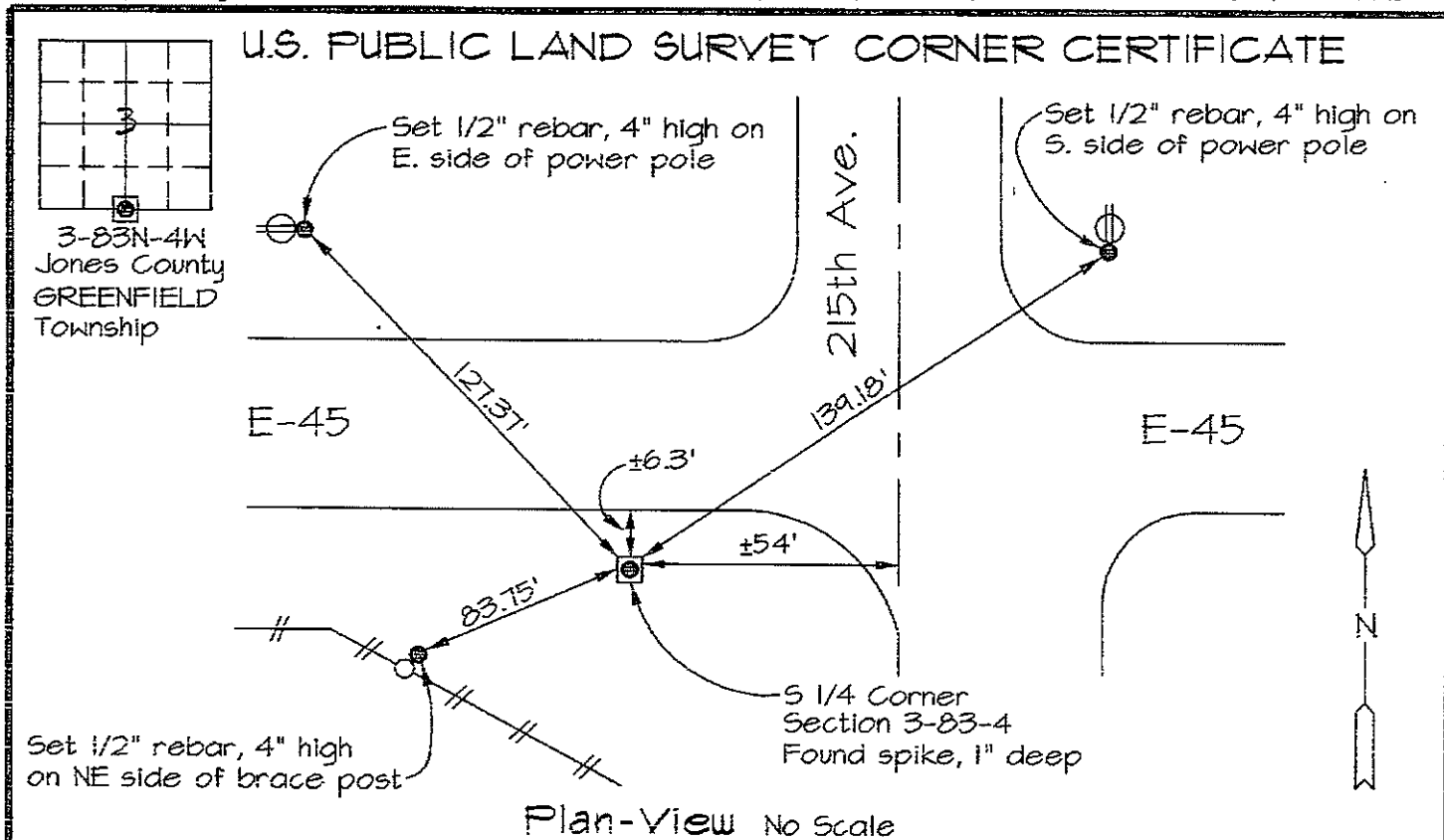


MARIE KRUTZFIELD, RECORDER
 JONES COUNTY, IOWA

Prepared by: Richard M. Kordick, P.E., L.S., 120 East Main, Suite D, Anamosa, IA 52205 Phone: (319) 462-4498



Section corner location: S 1/4, Section 3-83-4

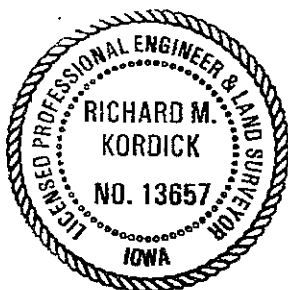
Reason for corner tie:

- A) There is no certificate for the corner on file with the recorder.
- B) Corner position differs from previously recorded certificate recorded in book , page
- C) Corner monument was replaced or modified.
- D) Reference ties in previously recorded certificate recorded in book , page are incorrect or missing.

Research at the recorder's office, auditor's office, and engineer's office revealed the following: None.

Field search performed was as follows:
 Field search was performed with a metal detector and excavation.

Monument found or set:
 A spike was found and used as the corner. The found spike was on-line and equidistant from the SW Corner to the SE Corner of Section 3-83-4.



I hereby certify that this land surveying document was prepared and the related survey work was performed by me or under my direct personal supervision and that I am a duly licensed Land Surveyor under the laws of the State of Iowa.

Richard M. Kordick 9/22/2006
 Richard M. Kordick date
 License number 13657
 My license renewal date is December 31, 2007.
 Pages or sheets covered by this seal: 1 of 1

- LEGEND:**
- Section Corner as noted
 - Power Pole
 - Section line
 - Centerline
 - /// Existing Fence
 - () Recorded Dist.

Kordick Surveying & Engineering
 120 East Main, Suite D
 Anamosa, Iowa 52205
 (319) 462-4498

U.S. Public Land
 Survey Corner Certificate
 Project: Plat of Survey
 Parcel No. 2006-138
 Proprietor: Nishaus Long View Farms Corporation

Field BK
 06083
 Date
 9-22-06
 Job No.
 06083
 Sheet
 1 of 1