

Instrument #: 2016-3612
 12/20/2016 02:40:15 PM Total Pages: 1
 ZSC SECTION CORNER CERTIFICATE
 Recording Fee: \$7.00 Transfer Tax: \$0
 Sheri L. Jones, Recorder, Jones County Iowa



PREPARED BY & RETURN TO: BRADLEY R. GEATER, PLS / MCCLURE ENGINEERING COMPANY / 1740 LININGER LANE, NORTH LIBERTY, IA 52317 / 319-626-9090

U.S. PUBLIC LAND SURVEY CORNER CERTIFICATE

OF LAND SURVEY MONUMENT SITUATED IN SECTION 11, TOWNSHIP 83, RANGE 4 WEST OF THE FIFTH PRINCIPAL MERIDIAN,
 JONES COUNTY, IOWA. PREVIOUSLY RECORDED IN JONES COUNTY RECORDER'S OFFICE IN BOOK 2008, PAGE 320.

REASON FOR PREPARING THIS CERTIFICATE:

- CORNER RESTORATION (Accepted or perpetuated corner)
- CORNER ESTABLISHMENT (Any PLSS corner created, but not monumented in the original survey; Center 1/4, 1/16 Corner, etc.)
- CORNER REESTABLISHMENT (Lost corner)

DESCRIPTION OF ORIGINAL AND SUBSEQUENT SURVEYS REFERENCING THIS CORNER LOCATION:

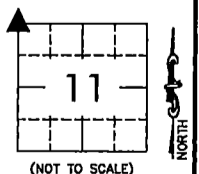
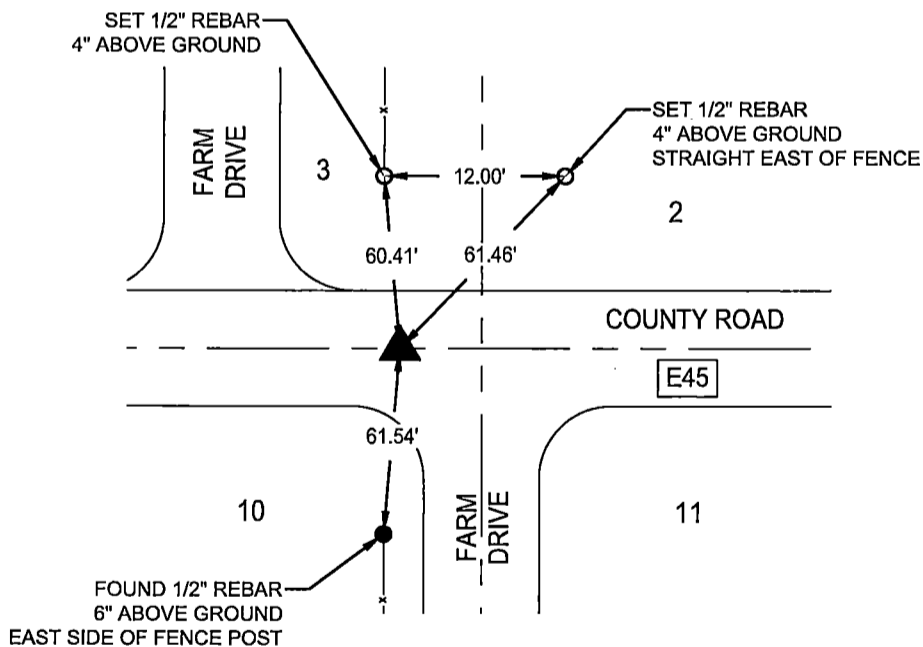
- PREVIOUSLY RECORDED IN JONES COUNTY RECORDERS OFFICE IN BOOK 2008, PAGE 320.
- SECTION CORNER PRESERVATION DURING ROAD OVERLAY PROJECT NUMBER STP-S-C053(81)--5E-53

DESCRIPTION OF CORNER EVIDENCE FOUND OR A DETAILED STATEMENT OF THE METHOD USED TO ESTABLISH / REESTABLISH THIS CORNER:

- NORTHWEST CORNER SECTION 11-83-4 - FOUND 2" BRASS PLUG IN CONCRETE USING PREVIOUS CERTIFICATE.

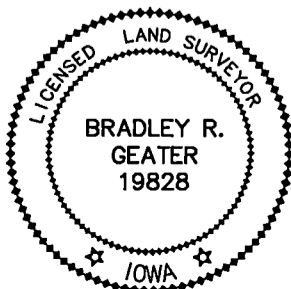
DESCRIPTION AND SKETCH OF THE MONUMENT AND ITS ACCESSORIES ESTABLISHED TO PERPETUATE THE LOCATION OF THIS CORNER:

- NORTHWEST CORNER SECTION 11-83-4 SET SURVEY BRASS MONUMENT AT 2" BRASS PLUG LOCATION AFTER COMPLETION OF OVERLAY.



MCCLURETM
 ENGINEERING CO.
 building strong communities.

1740 Lininger Lane
 North Liberty, IA 52317
 319-626-9090
 fax 319-626-9095



I HEREBY CERTIFY THAT THIS LAND SURVEYING DOCUMENT WAS PREPARED AND THE RELATED WORK WAS PERFORMED BY ME OR UNDER MY DIRECT PERSONAL SUPERVISION AND THAT I AM A DULY LICENSED LAND SURVEYOR UNDER THE LAWS OF THE STATE OF IOWA.

SIGNATURE: *Bradley R. Geater* DATE: 12-20-2016
 BRADLEY R. GEATER

MY LICENSE RENEWAL DATE IS DECEMBER 31, 2017
 PAGES OR SHEETS COVERED BY THIS SEAL: THIS SHEET

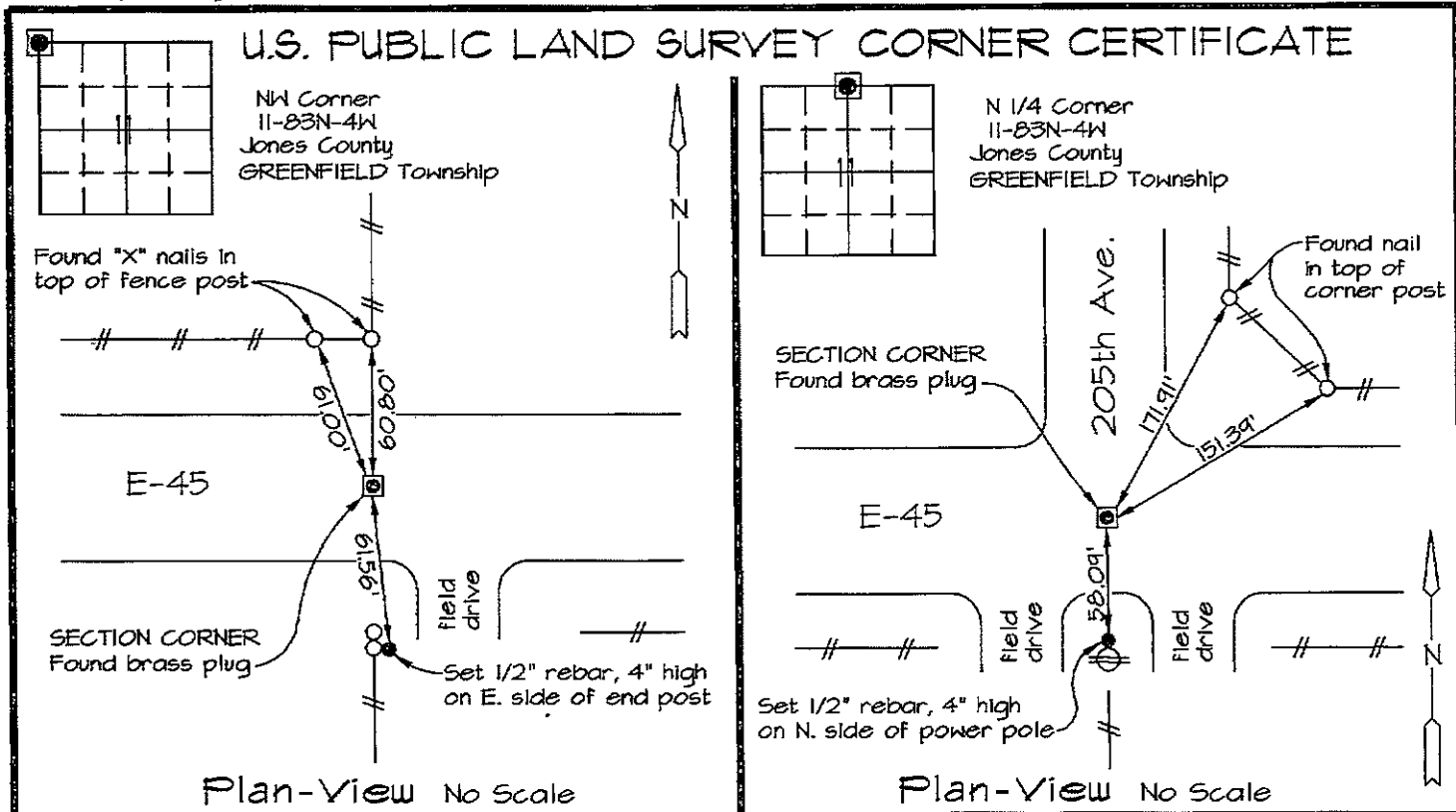
DATE SURVEYED: 09-08-2016
 DRAWING PATH: Projects\JNC 20716057\Dwgs\Corners\
 CC06 NW COR 11-83-4.dwg

CORNERS TO BE INDEXED

CORNER	SEC.	TWP.	RGE.
NW	11	83	4
NE	10	83	4
SE	3	83	4
SW	2	83	4

Marie Krutzfield, Recorder
Jones County, Iowa

Prepared by: Richard M. Kordick, P.E., L.S., 120 East Main, Suite D, Anamosa, IA 52205 Phone: (319) 462-4498



Reason for corner tie:

- A) There is no certificate for the corner on file with the recorder.
- B) Corner position differs from previously recorded certificate recorded in book , page
- C) Corner monument was replaced or modified.
- D) Reference ties in previously recorded certificate recorded in book , page are incorrect or missing.

Research at the recorder's office, auditor's office, and engineer's office revealed the following:
County Engineer's Office corner ties stated "(1968) county survey crew found standard concrete monument prior to road paving. After paving was done in 1972, survey crew set brass plug in concrete directly above scm location."

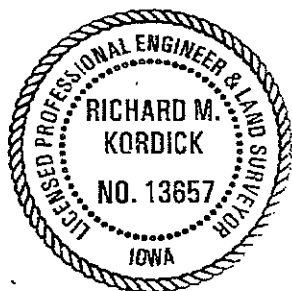
County Engineer's Office corner ties stated "In 1968 county survey crew found standard concrete monument 2' below surface prior to paving. In 1972 county survey crew set brass plug in concrete after paving. County Engineer's Office road plans stated Ref. P.I. and N 1/4 Cor. Sec. 11 Sta. 202+37.4". A Plat of Survey in Recorder's Doc. #2006-3824 stated "South 1/4 Cor., Sec. 2, T83N, R4W, 5th P.M., F.D. Brass Plug in pavement per Record Ties" for this corner.

Field search performed was as follows:
Field search was performed with a metal detector.

Field search performed was as follows:
Field search was performed with a metal detector.

Monument found or set:
A brass plug was found and used as the corner.

Monument found or set:
A brass plug was found and used as the corner.



I hereby certify that this land surveying document was prepared and the related survey work was performed by me or under my direct personal supervision and that I am a duly licensed Land Surveyor under the laws of the State of Iowa.

Richard M. Kordick 1/30/2008
Richard M. Kordick date
License number 13657
My license renewal date is December 31, 2009.
Pages or sheets covered by this seal: 1 of 1

LEGEND:

- Section Corner as noted
- Power Pole
- Section line
- Centerline
- Existing Fence
- Recorded Dist.

Kordick Surveying & Engineering
120 East Main, Suite D
Anamosa, Iowa 52205
(319) 462-4498

U.S. Public Land Survey Corner Certificate

Project: Plat of Survey
Parcel No. 2008-40

Field BK 08014
Date 1-30-08
Job No. 08014
Sheet 1 of 1

THIS IS NOT A CERTIFICATION

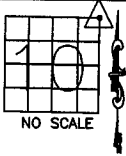
JONES COUNTY ENGINEER'S OFFICE, 19501 HWY. 64, ANAMOSA, IOWA, 52205 (319)462-3785

UNITED STATES PUBLIC LAND SURVEY CORNER CERTIFICATE

LAND SURVEY MONUMENTS SITUATED IN SECTION 10, TOWNSHIP 83
NORTH, RANGE 4 WEST OF THE 5TH P.M., JONES COUNTY, IOWA

CORNERS TO BE INDEXED

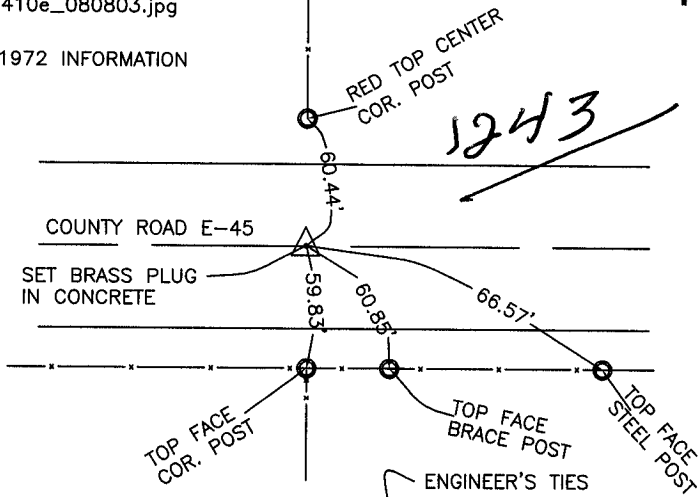
CORNER SECTION TOWNSHIP RANGE
NORTHEAST 10 83N 4W



OFFICE FILE NO.

83410e_080803.jpg

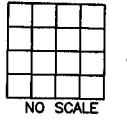
1972 INFORMATION



PREVIOUSLY RECORDED IN BOOK 129, PAGE _____
MONUMENT DESCRIPTION AND HOW ESTABLISHED (1968) COUNTY
SURVEY CREW FOUND STANDARD CONCRETE MONUMENT PRIOR TO ROAD PAVING.
AFTER PAVING WAS DONE IN 1972, SURVEY CREW SET BRASS PLUG IN CONCRETE
DIRECTLY ABOVE SCM LOCATION, AND TIED OUT AS INDICATED. NORTHEAST CORNER
SECTION 10, TOWNSHIP 83 NORTH, RANGE 4 WEST, JONES COUNTY, IOWA.

CORNERS TO BE INDEXED

CORNER SECTION TOWNSHIP RANGE

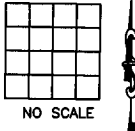


OFFICE FILE NO.

PREVIOUSLY RECORDED IN BOOK _____, PAGE _____
MONUMENT DESCRIPTION AND HOW ESTABLISHED _____

CORNERS TO BE INDEXED

CORNER SECTION TOWNSHIP RANGE

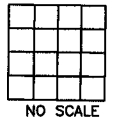


OFFICE FILE NO.

PREVIOUSLY RECORDED IN BOOK _____, PAGE _____
MONUMENT DESCRIPTION AND HOW ESTABLISHED _____

CORNERS TO BE INDEXED

CORNER SECTION TOWNSHIP RANGE



OFFICE FILE NO.

PREVIOUSLY RECORDED IN BOOK _____, PAGE _____
MONUMENT DESCRIPTION AND HOW ESTABLISHED _____

~~I hereby declare that this plat, survey or report was made by me or under my direct personal supervision and that I am a duly registered Land Surveyor under the laws of the State of Iowa.~~

Signed:

SEAL

JONES COUNTY
ENGINEER'S OFFICE

19501 HWY. 64,
ANAMOSA, IOWA,
52205 (319)462-3785

F