

COPY

Jones County Iowa
Marie Krutzfield, Recorder
Fee Book 2010 3638

12/22/2010 @1206PM
ZSC SEC COR CERT
Book: Page: # Pages: 1
Total Fees: \$0.00

PREPARED BY

CLARENCE J. WALTON, JONES COUNTY ENGINEER'S OFFICE, 19501 HWY. 64, ANAMOSA, IOWA, 52205 (319) 462-3785

AMENDED UNITED STATES PUBLIC LAND SURVEY CORNER CERTIFICATE

LAND SURVEY MONUMENTS SITUATED IN SECTION 11, TOWNSHIP 83 NORTH, RANGE 4 WEST OF THE 5TH PRINCIPAL MERIDIAN, JONES COUNTY, IOWA.

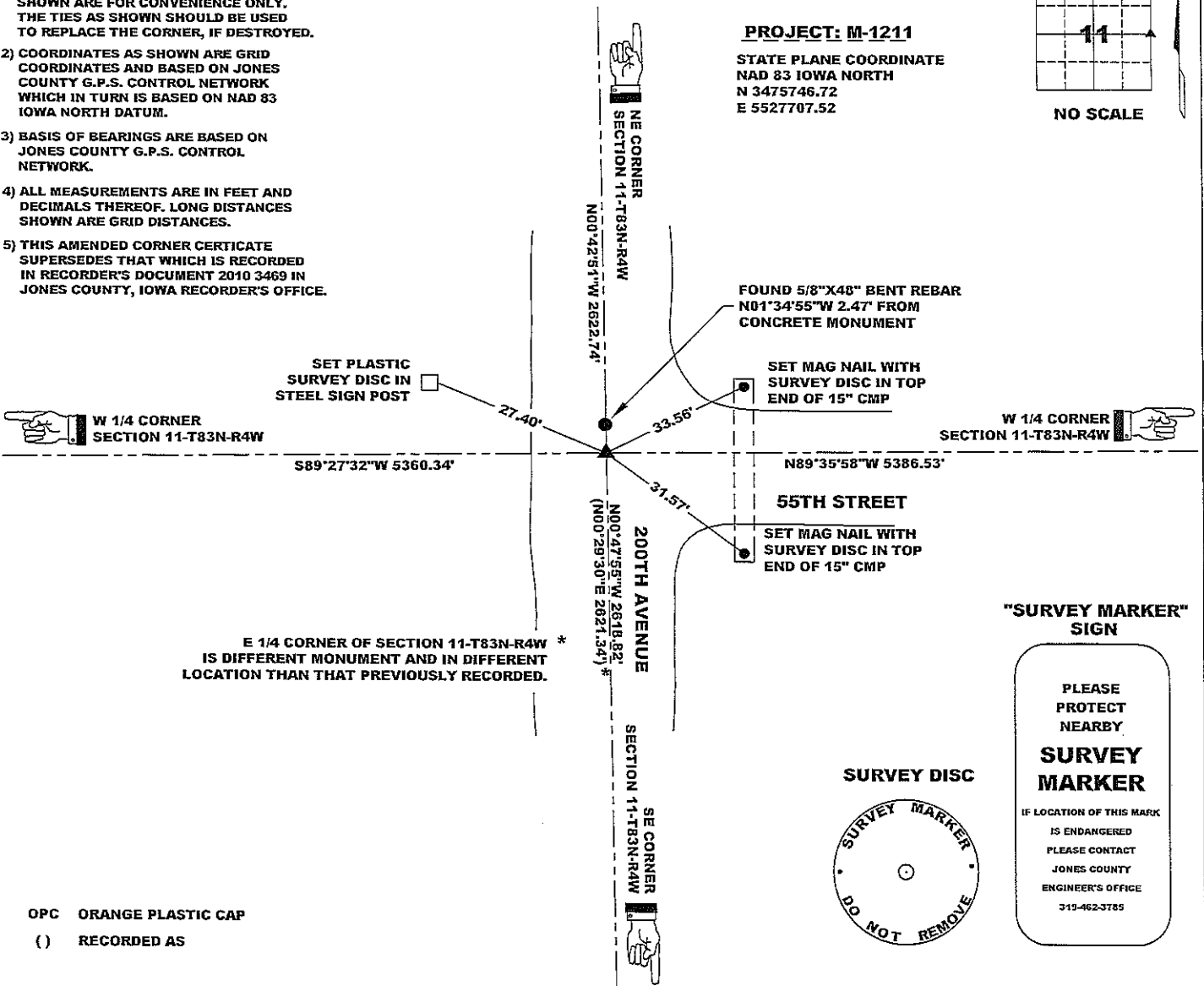
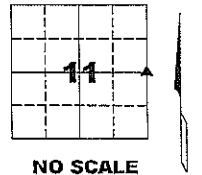
NOTES:

- 1) THE STATE PLANE COORDINATES AS SHOWN ARE FOR CONVENIENCE ONLY. THE TIES AS SHOWN SHOULD BE USED TO REPLACE THE CORNER, IF DESTROYED.
- 2) COORDINATES AS SHOWN ARE GRID COORDINATES AND BASED ON JONES COUNTY G.P.S. CONTROL NETWORK WHICH IN TURN IS BASED ON NAD 83 IOWA NORTH DATUM.
- 3) BASIS OF BEARINGS ARE BASED ON JONES COUNTY G.P.S. CONTROL NETWORK.
- 4) ALL MEASUREMENTS ARE IN FEET AND DECIMALS THEREOF. LONG DISTANCES SHOWN ARE GRID DISTANCES.
- 5) THIS AMENDED CORNER CERTIFICATE SUPERSEDES THAT WHICH IS RECORDED IN RECORDER'S DOCUMENT 2010 3469 IN JONES COUNTY, IOWA RECORDER'S OFFICE.

CORNER SECTION TOWNSHIP RANGE
E 1/4 CORNER 11 T83N R4W

PROJECT: M-1211

STATE PLANE COORDINATE
NAD 83 IOWA NORTH
N 3475746.72
E 5527707.52

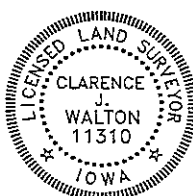


OPC ORANGE PLASTIC CAP
() RECORDED AS

PREVIOUSLY RECORDED IN RECORDER'S DOCUMENT 2010 3469

MONUMENT DESCRIPTION AND HOW ESTABLISHED FOUND 5/8"X48" REBAR (TOP BENT) 2" BELOW ROAD SURFACE. DUG DOWN TO FIND 4"X4"X48" CONCRETE MONUMENT WITH BRASS DISC 36" BELOW PRESENT ROAD SURFACE. MONUMENT IS S01°34'55"E, 2.47' FROM WERE SAID 5/8"X48" REBAR WAS. IN THE PROCESS OF DIGGING FOR THE CONCRETE MONUMENT, THE TOP FOOT OR SO OF THE MONUMENT WAS BROKEN OFF. FOUR 5/8"X24" REBAR WERE SET SNUG AGAINST THE SIDES OF THE CONCRETE MONUMENT TO HOLD THE BROKEN TOP PORTION IN PLACE. A 5/8"X24" REBAR WITH ORANGE PLASTIC CAP #11310 WAS SET DIRECTLY ATOP THE MONUMENT 10" BELOW PRESENT ROAD SURFACE. DID NOT RESET FOUND BENT 5/8"X48" REBAR.

FIELD BOOK MISC. 2009-2010, PAGE 147. DATE OF SURVEY: 11/9/10



I hereby certify that this land surveying document and the related survey work was performed by me or under my direct personal supervision and that I am a duly registered Land Surveyor under the laws of the State of Iowa.

Signed: *Clarence J. Walton* 12/20/10
Clarence J. Walton, L.S.
My Registration Renewal Date is December 31, 2011
Iowa License Number 11310
Pages or sheets covered by this seal: 1 of 1.

- A. THERE IS NO CERTIFICATE FOR THE CORNER ON FILE WITH THE RECORDER OF THE COUNTY IN WHICH THE CORNER IS LOCATED.
- B. THE CORNER MONUMENT HAS BEEN REPLACED OR MODIFIED.
- C. THE SURVEYOR IN RESPONSIBLE CHARGE OF THE LAND SURVEYING ACCEPTS A CORNER POSITION THAT DIFFERS FROM THAT SHOWN IN THE PUBLIC RECORDS OF THE COUNTY IN WHICH THE CORNER IS LOCATED.
- D. THE REFERENCE TIES REFERRED TO IN AN EXISTING PUBLIC RECORD NO LONGER EXIST.

CORNERS TO BE INDEXED

CORNER	SECTION	TOWNSHIP	RANGE
E 1/4 CORNER	11	83N	4W
W 1/4 CORNER	12	83N	4W

JONES COUNTY ENGINEER'S OFFICE



19501 HWY. 64, ANAMOSA, IOWA 52205
(319) 462-3785

COPY

Jones County Iowa
 Marie Krutzfield, Recorder
 Fee Book 2010 3469
 12/13/2010 @1209PM
 ZSC SEC COR CERT
 Book: Page: # Pages: 1
 Total Fees: \$0.00

PREPARED BY
 CLARENCE J. WALTON, JONES COUNTY ENGINEER'S OFFICE, 19501 HWY. 64, ANAMOSA, IOWA, 52205 (319) 462-3785

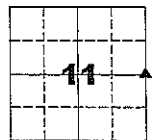
UNITED STATES PUBLIC LAND
 SURVEY CORNER CERTIFICATE
 LAND SURVEY MONUMENTS SITUATED IN SECTION 11, TOWNSHIP 83 NORTH,
 RANGE 4 WEST OF THE 5TH PRINCIPAL MERIDIAN, JONES COUNTY, IOWA.

PROJECT: M-1211

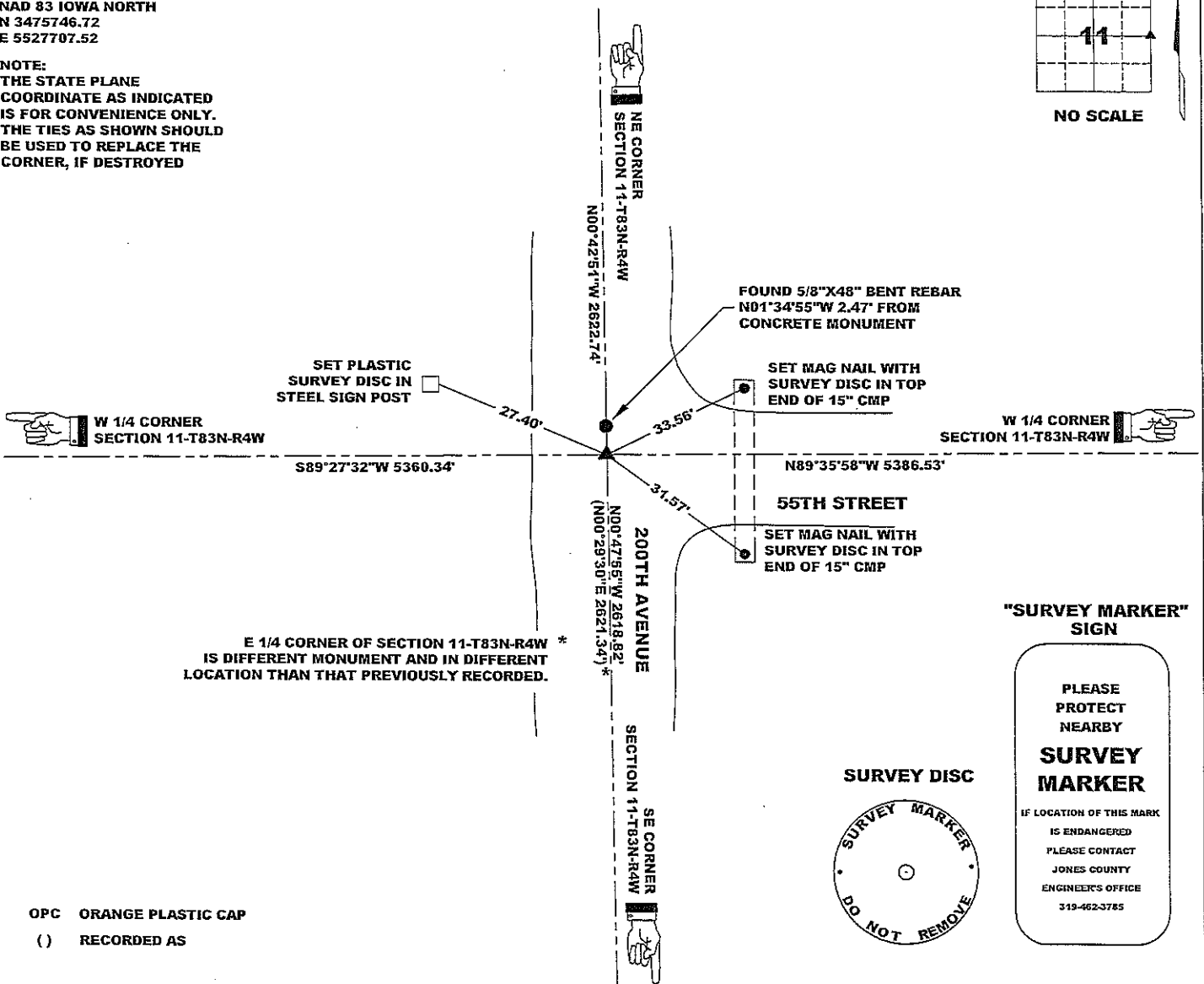
STATE PLANE COORDINATE
 NAD 83 IOWA NORTH
 N 3475746.72
 E 5527707.52

NOTE:
 THE STATE PLANE
 COORDINATE AS INDICATED
 IS FOR CONVENIENCE ONLY.
 THE TIES AS SHOWN SHOULD
 BE USED TO REPLACE THE
 CORNER, IF DESTROYED

CORNER SECTION TOWNSHIP RANGE
 E 1/4 CORNER 11 T83N R4W



NO SCALE



E 1/4 CORNER OF SECTION 11-T83N-R4W *
 IS DIFFERENT MONUMENT AND IN DIFFERENT
 LOCATION THAN THAT PREVIOUSLY RECORDED.

"SURVEY MARKER"
 SIGN



SURVEY DISC



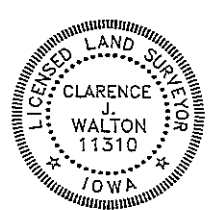
OPC ORANGE PLASTIC CAP

() RECORDED AS

PREVIOUSLY RECORDED IN BOOK N/A, PAGE N/A

MONUMENT DESCRIPTION AND HOW ESTABLISHED FOUND 5/8"X48" REBAR (TOP BENT) 2" BELOW ROAD SURFACE. DUG DOWN TO FIND CONCRETE FOUND 5/8"X48" REBAR (TOP BENT) 2" BELOW ROAD SURFACE. DUG DOWN TO FIND CONCRETE MONUMENT; FOUND 4"X4"X48" CONCRETE MONUMENT WITH WITH BRASS DISC 36" BELOW PRESENT ROAD SURFACE N01°34'55"W, 2.47' FROM WHERE REBAR WAS. IN PROCESS OF DIGGING, THE TOP FOOT OR SO WAS BROKEN OFF. SET 4 - 5/8"X24" REBAR SNUG AGAINST THE SIDES OF THE CONCRETE MONUMENT TO HOLD THE TOP PORTION IN PLACE. SET 5/8"X24" REBAR WITH ORANGE PLASTIC CAP #11310 DIRECTLY ATOP THE MONUMENT 10" BELOW PRESENT ROAD SURFACE. DID NOT RESET FOUND BENT 5/8"X48" REBAR.

FIELD BOOK MISC. 2009-2010, PAGE 147. DATE OF SURVEY: 11/9/10



I hereby certify that this land surveying document and the related survey work was performed by me or under my direct personal supervision and that I am a duly registered Land Surveyor under the laws of the State of Iowa.

Signed: *Clarence J. Walton* 12/9/10
 Clarence J. Walton, L.S.
 My Registration Renewal Date is December 31, 2011
 Iowa License Number 11310
 Pages or sheets covered by this seal: 1 of 1.

- A. THERE IS NO CERTIFICATE FOR THE CORNER ON FILE WITH THE RECORDER OF THE COUNTY IN WHICH THE CORNER IS LOCATED.
- B. THE CORNER MONUMENT HAS BEEN REPLACED OR MODIFIED.
- C. THE SURVEYOR IN RESPONSIBLE CHARGE OF THE LAND SURVEYING ACCEPTS A CORNER POSITION THAT DIFFERS FROM THAT SHOWN IN THE PUBLIC RECORDS OF THE COUNTY IN WHICH THE CORNER IS LOCATED.
- D. THE REFERENCE TIES REFERRED TO IN AN EXISTING PUBLIC RECORD NO LONGER EXIST.

CORNERS TO BE INDEXED

CORNER	SECTION	TOWNSHIP	RANGE
E 1/4 CORNER	11	83N	4W
W 1/4 CORNER	12	83N	4W

JONES COUNTY ENGINEER'S OFFICE



19501 HWY. 64, ANAMOSA, IOWA 52205
 (319) 462-3785

THIS IS NOT A CERTIFICATION

JONES COUNTY ENGINEER'S OFFICE, 19501 HWY. 64, ANAMOSA, IOWA, 52205 (319)462-3785

UNITED STATES PUBLIC LAND SURVEY CORNER CERTIFICATE

LAND SURVEY MONUMENTS SITUATED IN SECTION 11, TOWNSHIP 83
NORTH, RANGE 4 WEST OF THE 5TH P.M., JONES COUNTY, IOWA

CORNERS TO BE INDEXED

CORNER NORTHEAST	SECTION 11	TOWNSHIP 83N	RANGE 4W
---------------------	---------------	-----------------	-------------

OFFICE FILE NO. _____
83411e_080803.jpg

PREVIOUSLY RECORDED IN BOOK #129, PAGE _____
MONUMENT DESCRIPTION AND HOW ESTABLISHED IN 1967 COUNTY SURVEY CREW FOUND STANDARD CONCRETE MONUMENT 3.5' BELOW SURFACE OF ROADWAY, SET IRON PIN DIRECTLY ABOVE SCM. IN 1972 COUNTY SURVEY CREW DUG DOWN 8\"/>

CORNERS TO BE INDEXED

CORNER NORTH-1/4	SECTION 11	TOWNSHIP 83N	RANGE 4W
---------------------	---------------	-----------------	-------------

OFFICE FILE NO. _____
83411c_080803.jpg

PREVIOUSLY RECORDED IN BOOK #129, PAGE _____
MONUMENT DESCRIPTION AND HOW ESTABLISHED IN 1968 COUNTY SURVEY CREW FOUND STANDARD CONCRETE MONUMENT 2' BELOW SURFACE PRIOR TO PAVING. IN 1972 COUNTY SURVEY CREW SET BRASS PLUG IN CONCRETE AFTER PAVING. NORTH QUARTER CORNER SECTION 11, TOWNSHIP 83 NORTH, RANGE 4 WEST OF THE 5TH PRINCIPAL, JONES COUNTY, IOWA. SET REFERENCE POINTS AND TIED OUT AS INDICATED.

CORNERS TO BE INDEXED

CORNER	SECTION	TOWNSHIP	RANGE
--------	---------	----------	-------

OFFICE FILE NO. _____

PREVIOUSLY RECORDED IN BOOK #6, PAGE 39
MONUMENT DESCRIPTION AND HOW ESTABLISHED IN 1936, COUNTY SURVEY CREW FOUND 4\"/>

CORNERS TO BE INDEXED

CORNER EAST QUARTER	SECTION 11	TOWNSHIP 83N	RANGE 4W
------------------------	---------------	-----------------	-------------

OFFICE FILE NO. _____
83411o_080803.jpg

PREVIOUSLY RECORDED IN BOOK #6, PAGE 39
MONUMENT DESCRIPTION AND HOW ESTABLISHED IN 1936, COUNTY SURVEY CREW FOUND 4\"/>

~~I hereby declare that this plat, survey or report was made by me or under my direct personal supervision and that I am a duly registered Land Surveyor under the laws of the State of Iowa.~~

Signed: _____

SEAL

JONES COUNTY
ENGINEER'S OFFICE

19501 HWY. 64,
ANAMOSA, IOWA,
52205 (319)462-3785