

FILED  
RECORDERS OFFICE  
JONES COUNTY IOWA

05 JAN 14 PM 1:34

MARIE KRUTZFIELD  
RECORDER No Fee

J.D. TJEPKES, LS. JONES COUNTY ENGINEER'S OFFICE, 19501 HWY. 64, ANAMOSA, IOWA, 52205 (319)462-3785

# UNITED STATES PUBLIC LAND SURVEY CORNER CERTIFICATE

LAND SURVEY MONUMENTS SITUATED IN SECTION 12, TOWNSHIP 83  
NORTH, RANGE 4 WEST OF THE 5TH P.M., JONES COUNTY, IOWA

**CORNERS TO BE INDEXED**

CORNER	SECTION	TOWNSHIP	RANGE
NE-SE-SE	12	83N	4W

OFFICE FILE NO. 83412t\_011005.tif

NE-SE-SE SEC. 12 83-4  
SET 1/2"X24" REBAR W/CAP #11954

STA 68+57.000 METRIC

FIELD NOTES: 8-27-2002 BK 335 P 53

PREVIOUSLY RECORDED IN BOOK NA, PAGE NA  
MONUMENT DESCRIPTION AND HOW ESTABLISHED

NOTE: HALL & HALL MARKED LOCATION IN CONJUNCTION WITH JONES CO. PROJECT NO. CO-53(38)--55-53. SET 1/2"X24" REBAR W/CAP #11954. RETIED AS INDICATED. NORTHEAST CORNER, SOUTHEAST QUARTER, SOUTHEAST QUARTER, SECTION 12, T83N R4W, JONES COUNTY, IOWA.

**CORNERS TO BE INDEXED**

CORNER	SECTION	TOWNSHIP	RANGE
E-QUARTER	12	83N	4W

OFFICE FILE NO. 83412o\_011005.tif

SET 1/2"X24" REBAR W/CAP #11954

PI STA 72+60.468 METRIC

FIELD NOTES: 8-27-2002 BK 335 P 54

PREVIOUSLY RECORDED IN BOOK NA, PAGE NA  
MONUMENT DESCRIPTION AND HOW ESTABLISHED

NOTE: HALL & HALL MARKED LOCATION IN CONJUNCTION WITH JONES CO. PROJECT NO. CO-53(38)--55-53. SET 1/2"X24" REBAR W/CAP #11954. RETIED AS INDICATED. EAST QUARTER CORNER, SECTION 12 T83N R4W, JONES COUNTY, IOWA.

**CORNERS TO BE INDEXED**

CORNER	SECTION	TOWNSHIP	RANGE
NE-SE-NE	12	83N	4W

OFFICE FILE NO. 83412j\_011005.tif

PI STA 76+632.257 METRIC

NE-SE-NE SEC. 12 83-4  
SET 1/2"X24" REBAR W/CAP #11954

FIELD NOTES: 8-27-2002 BK 335 P 54

PREVIOUSLY RECORDED IN BOOK NA, PAGE NA  
MONUMENT DESCRIPTION AND HOW ESTABLISHED

NOTE: HALL & HALL MARKED LOCATION IN CONJUNCTION WITH JONES CO. PROJECT NO. CO-53(38)--55-53. SET 1/2"X24" REBAR W/CAP #11954. RETIED AS INDICATED. NORTHEAST CORNER, SOUTHEAST QUARTER, NORTHEAST QUARTER, SECTION 12, T83N R4W, JONES COUNTY, IOWA.

**CORNERS TO BE INDEXED**

CORNER	SECTION	TOWNSHIP	RANGE
NORTHEAST	12	83N	4W

OFFICE FILE NO. 83412e\_011005.tif

NE COR. 12-83-4  
SET 1/2"X24" REBAR W/CAP #11954

STA 80+67.00 METRIC

FIELD NOTES: 8-27-2002 BK 335 P 55

PREVIOUSLY RECORDED IN BOOK NA, PAGE NA  
MONUMENT DESCRIPTION AND HOW ESTABLISHED

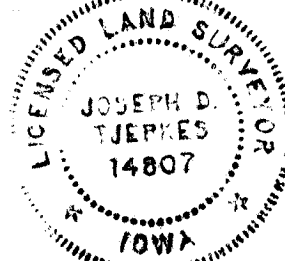
NOTE: HALL & HALL MARKED LOCATION IN CONJUNCTION WITH JONES CO. PROJECT NO. CO-53(38)--55-53. SET 1/2"X24" REBAR W/CAP #11954. RETIED AS INDICATED. NORTHEAST CORNER SECTION 12, T83N R4W, JONES COUNTY, IOWA.

I hereby declare that this plat, survey or report was made by me or under my direct personal supervision and that I am a duly registered Land Surveyor under the laws of the State of Iowa.

Signed:

*Joseph D. Tjepkes* 1-14-05  
Joseph D. Tjepkes L.S. Iowa Reg. No. 14807  
My Registration Renewal Date is December 31, 2006

SEAL



J.D. TJEPKES LS 14807  
JONES COUNTY  
ENGINEER'S OFFICE

19501 HWY. 64,  
ANAMOSA, IOWA,  
52205 (319)462-3785

B

2003 1053

FILED  
RECORDERS OFFICE  
JONES COUNTY IOWA

03 MAR 13 PM 12: 55

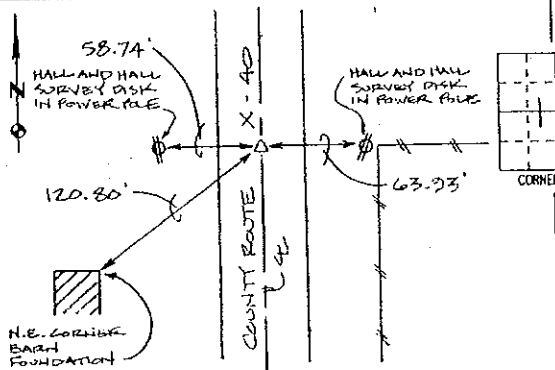
MARIE KRUTZFIELD  
RECORDER *6008*

PREPARED BY HALL & HALL ENGINEERS, INC. 209 29TH STREET N.E. CEDAR RAPIDS, IOWA 52402 (319) 362-9548

LAND SURVEY MONUMENTS SITUATED IN SECTION 12, TOWNSHIP 23 NORTH,  
RANGE 4 WEST, OF THE FIFTH PRINCIPAL MERIDIAN, JONES COUNTY IOWA.

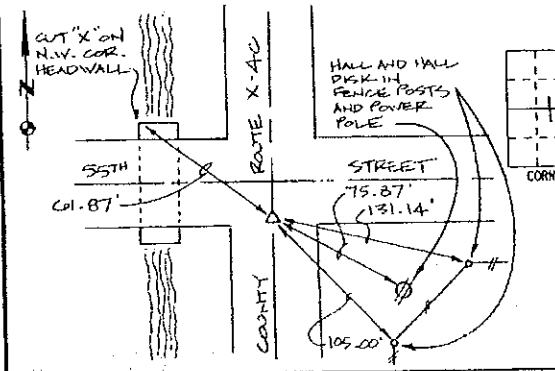
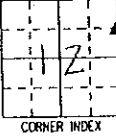
RECOVERY TIE DRAWING

MONUMENT DESCRIPTION AND REMARKS:



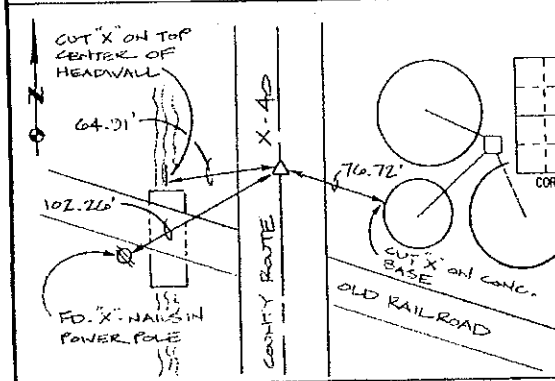
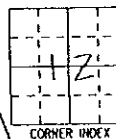
N.E. CORNER, S.E. 1/4 - N.E. 1/4  
SECTION 12, T83N, R4W

REASON FOR PREPARING CERTIFICATE:  A, B, C OR D  
PREVIOUS BOOK \_\_\_\_\_ PAGE \_\_\_\_\_  
SET 1/2" REBAR WITH RED L.S.  
CAP # 11954



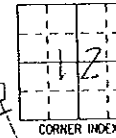
E. 1/4 COR., SECTION 12, T83N, R4W

REASON FOR PREPARING CERTIFICATE:  A, B, C OR D  
PREVIOUS BOOK \_\_\_\_\_ PAGE \_\_\_\_\_  
SET 1/2" REBAR WITH RED L.S.  
CAP # 11954



S.E. COR., SECTION 12, T83N, R4W

REASON FOR PREPARING CERTIFICATE:  A, B, C OR D  
PREVIOUS BOOK \_\_\_\_\_ PAGE \_\_\_\_\_  
SET 1/2" REBAR WITH RED L.S.  
CAP # 11954



I hereby certify that this land surveying document was prepared and the related survey work was performed by me or under my direct personal supervision and that I am a duly licensed Land Surveyor under the laws of the State of Iowa.

Signed: *Daniel J. Johnson* Date: *2-27-03*  
Daniel J. Johnson, L.S. 11954  
My license renewal date is December 31, *2004*

Pages or sheets covered by this seal: *1*  
(Entire submission unless specified here)

- REASON FOR PREPARING CERTIFICATE:
- A) THERE IS NO CERTIFICATE FOR THE CORNER ON FILE WITH THE RECORDER OF THE COUNTY IN WHICH THE CORNER IS LOCATED.
  - B) CORNER POSITION DIFFERS FROM THAT SHOWN IN THE PUBLIC RECORDS OF THE COUNTY IN WHICH THE CORNER IS LOCATED.
  - C) THE CORNER MONUMENT HAS BEEN REPLACED OR MODIFIED.
  - D) THE REFERENCE TIES REFERRED TO IN AN EXISTING PUBLIC RECORD ARE INCORRECT OR MISSING.

SHEET NO. \_\_\_\_\_ TITLE: U.S. PUBLIC LAND SURVEY CORNER CERTIFICATE  
PROJECT TITLE: JONES COUNTY X-40

HALL AND HALL ENGINEERS, INC.  
209 29TH STREET N.E.  
CEDAR RAPIDS, IOWA 52402  
(319) 362-9548

DATE	DRAWN	CHECKED	APPROVED	DATE	SCALE	FNO	PROJ
	NDK	DJJ	DJJ	7/15/02	NONE	COUNTY 3	6125

2002 3009

FILED  
RECORDERS OFFICE  
JONES COUNTY IOWA

83412j - 081602  
83412b - 081602  
83413e - 081602

02 AUG 16 PM 12:35

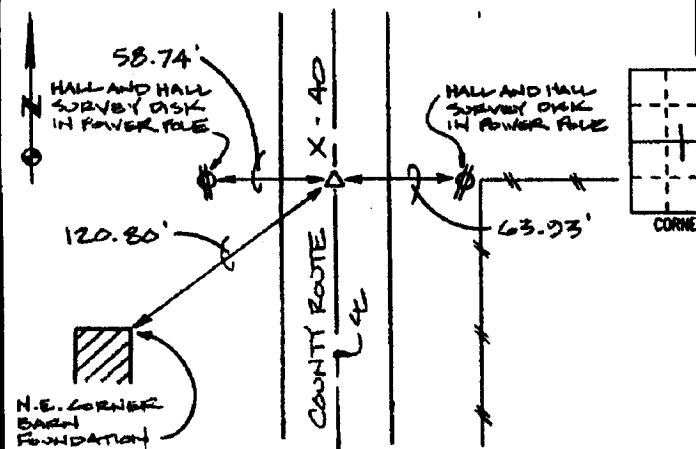
MARIE KRUTZFIELD  
RECORDER 6.00pd

PREPARED BY HALL & HALL ENGINEERS, INC. 209 29TH STREET N.E. CEDAR RAPIDS, IOWA 52402 (319) 362-9548

LAND SURVEY MONUMENTS SITUATED IN SECTION 12, TOWNSHIP 83 NORTH,  
RANGE 4 WEST, OF THE FIFTH PRINCIPAL MERIDIAN, JONES COUNTY IOWA.

RECOVERY TIE DRAWING

MONUMENT DESCRIPTION AND REMARKS:

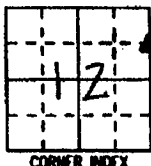


N.E. CORNER, S.E. 1/4 - N.E. 1/4  
SECTION 12, T83N, R4W

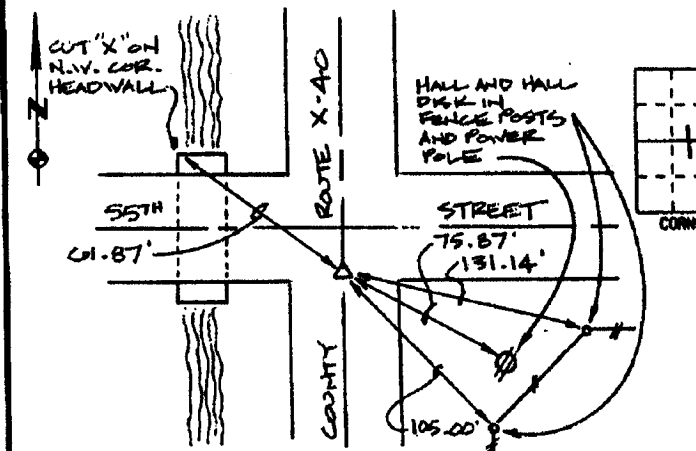
REASON FOR PREPARING CERTIFICATE: (A) B, C OR D  
PREVIOUS BOOK \_\_\_\_\_ PAGE \_\_\_\_\_

SET 1/2" REBAR WITH RED L.S.

CAP # 11954



CORNER INDEX

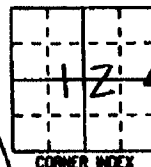


E. 1/4 COR., SECTION 12, T83N, R4W

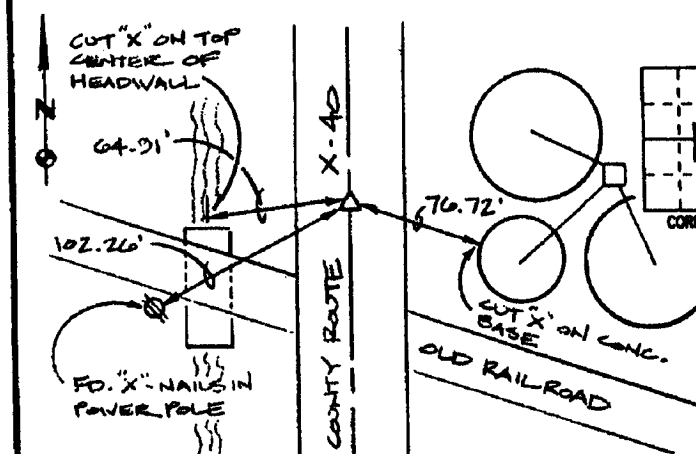
REASON FOR PREPARING CERTIFICATE: (A) B, C OR D  
PREVIOUS BOOK \_\_\_\_\_ PAGE \_\_\_\_\_

SET 1/2" REBAR WITH RED L.S.

CAP # 11954



CORNER INDEX

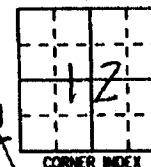


S.E. COR., SECTION 12, T83N, R4W

REASON FOR PREPARING CERTIFICATE: (A) B, C OR D  
PREVIOUS BOOK \_\_\_\_\_ PAGE \_\_\_\_\_

SET 1/2" REBAR WITH RED L.S.

CAP # 11954



CORNER INDEX



I hereby certify that this land surveying document was prepared and the related survey work was performed by me or under my direct personal supervision and that I am a duly licensed Land Surveyor under the laws of the State of Iowa.

Signed: Daniel J. Johnson Date: 8-16-02

Daniel J. Johnson, L.S. 11954  
My license renewal date is December 31, 2002

Pages or sheets covered by this seal:  
(Entire submission unless specified here) 1 of 1

REASON FOR PREPARING CERTIFICATE::

- A) THERE IS NO CERTIFICATE FOR THE CORNER ON FILE WITH THE RECORDER OF THE COUNTY IN WHICH THE CORNER IS LOCATED.
- B) CORNER POSITION DIFFERS FROM THAT SHOWN IN THE PUBLIC RECORDS OF THE COUNTY IN WHICH THE CORNER IS LOCATED.
- C) THE CORNER MONUMENT HAS BEEN REPLACED OR MODIFIED.
- D) THE REFERENCE TIES REFERRED TO IN AN EXISTING PUBLIC RECORD ARE INCORRECT OR MISSING.

SHEET TITLE: U.S. PUBLIC LAND SURVEY CORNER CERTIFICATE

PROJECT: JONES COUNTY X-40



HALL AND HALL ENGINEERS, INC.  
209 29TH STREET N.E.  
CEDAR RAPIDS, IOWA 52402  
(319) 362-9548

REV

DNDK

REC DJJ

APP DJJ

DATE 7/15/02

SCALE: NONE

PNB COUNTY 3

PNB 6125