

FILED
RECORDERS OFFICE
JONES COUNTY IOWA

05 JAN 14 PM 1:34

MARIE KRUTZFIELD
RECORDER No Fee

J.D. TJEPKES, LS. JONES COUNTY ENGINEER'S OFFICE, 19501 HWY. 64, ANAMOSA, IOWA, 52205 (319)462-3785

UNITED STATES PUBLIC LAND SURVEY CORNER CERTIFICATE

LAND SURVEY MONUMENTS SITUATED IN SECTION 12, TOWNSHIP 83
NORTH, RANGE 4 WEST OF THE 5TH P.M., JONES COUNTY, IOWA

CORNERS TO BE INDEXED

CORNER	SECTION	TOWNSHIP	RANGE
NE-SE-SE	12	83N	4W

OFFICE FILE NO. 83412t_011005.tif

NE-SE-SE SEC. 12 83-4 SET 1/2"X24" REBAR W/CAP #11954

STA 68+57.000 METRIC

FIELD NOTES: 8-27-2002 BK 335 P 53

PREVIOUSLY RECORDED IN BOOK NA, PAGE NA
MONUMENT DESCRIPTION AND HOW ESTABLISHED

NOTE: HALL & HALL MARKED LOCATION IN CONJUNCTION WITH JONES CO. PROJECT NO. CO-53(38)--55-53. SET 1/2"X24" REBAR W/CAP #11954. RETIED AS INDICATED. NORTHEAST CORNER, SOUTHEAST QUARTER, SOUTHEAST QUARTER, SECTION 12, T83N R4W, JONES COUNTY, IOWA.

CORNERS TO BE INDEXED

CORNER	SECTION	TOWNSHIP	RANGE
E-QUARTER	12	83N	4W

OFFICE FILE NO. 83412o_011005.tif

SET 1/2"X24" REBAR W/CAP #11954

PI STA 72+60.468 METRIC

FIELD NOTES: 8-27-2002 BK 335 P 54

PREVIOUSLY RECORDED IN BOOK NA, PAGE NA
MONUMENT DESCRIPTION AND HOW ESTABLISHED

NOTE: HALL & HALL MARKED LOCATION IN CONJUNCTION WITH JONES CO. PROJECT NO. CO-53(38)--55-53. SET 1/2"X24" REBAR W/CAP #11954. RETIED AS INDICATED. EAST QUARTER CORNER, SECTION 12 T83N R4W, JONES COUNTY, IOWA.

CORNERS TO BE INDEXED

CORNER	SECTION	TOWNSHIP	RANGE
NE-SE-NE	12	83N	4W

OFFICE FILE NO. 83412j_011005.tif

PI STA 76+632.257 METRIC

NE-SE-NE SEC. 12 83-4 SET 1/2"X24" REBAR W/CAP #11954

FIELD NOTES: 8-27-2002 BK 335 P 54

PREVIOUSLY RECORDED IN BOOK NA, PAGE NA
MONUMENT DESCRIPTION AND HOW ESTABLISHED

NOTE: HALL & HALL MARKED LOCATION IN CONJUNCTION WITH JONES CO. PROJECT NO. CO-53(38)--55-53. SET 1/2"X24" REBAR W/CAP #11954. RETIED AS INDICATED. NORTHEAST CORNER, SOUTHEAST QUARTER, NORTHEAST QUARTER, SECTION 12, T83N R4W, JONES COUNTY, IOWA.

CORNERS TO BE INDEXED

CORNER	SECTION	TOWNSHIP	RANGE
NORTHEAST	12	83N	4W

OFFICE FILE NO. 83412e_011005.tif

NE COR. 12-83-4 SET 1/2"X24" REBAR W/CAP #11954

STA 80+67.00 METRIC

FIELD NOTES: 8-27-2002 BK 335 P 55

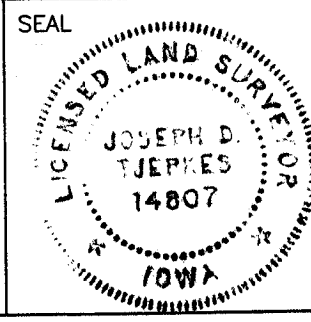
PREVIOUSLY RECORDED IN BOOK NA, PAGE NA
MONUMENT DESCRIPTION AND HOW ESTABLISHED

NOTE: HALL & HALL MARKED LOCATION IN CONJUNCTION WITH JONES CO. PROJECT NO. CO-53(38)--55-53. SET 1/2"X24" REBAR W/CAP #11954. RETIED AS INDICATED. NORTHEAST CORNER SECTION 12, T83N R4W, JONES COUNTY, IOWA.

I hereby declare that this plat, survey or report was made by me or under my direct personal supervision and that I am a duly registered Land Surveyor under the laws of the State of Iowa.

Signed: *[Signature]* 1-14-05

Joseph D. Tjepkes L.S. Iowa Reg. No. 14807
My Registration Renewal Date is December 31, 2006



J.D. TJEPKES LS 14807
JONES COUNTY
ENGINEER'S OFFICE

19501 HWY. 64,
ANAMOSA, IOWA,
52205 (319)462-3785

B

2003 1051

FILED
RECORDERS OFFICE
JONES COUNTY IOWA

03 MAR 13 PM 12:53

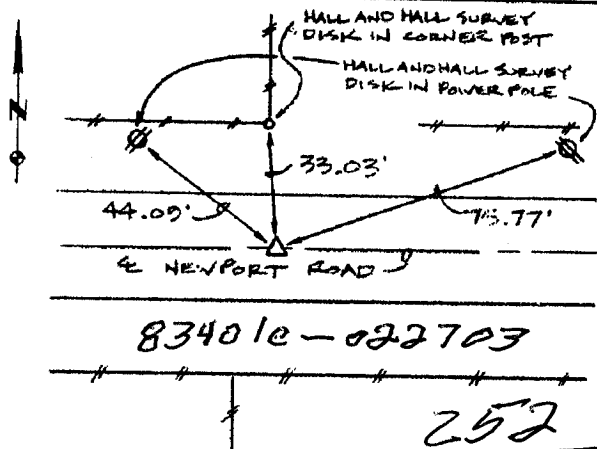
MARIE KRUTZFIELD
RECORDER 6.00Pd

PREPARED BY HALL & HALL ENGINEERS, INC. 209 29TH STREET N.E. CEDAR RAPIDS, IOWA 52402 (319) 362-9548

LAND SURVEY MONUMENTS SITUATED IN SECTION 1, TOWNSHIP 83 NORTH,
RANGE 4 WEST, OF THE FIFTH PRINCIPAL MERIDIAN, JONES COUNTY IOWA.

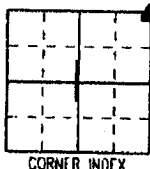
RECOVERY TIE DRAWING

MONUMENT DESCRIPTION AND REMARKS:

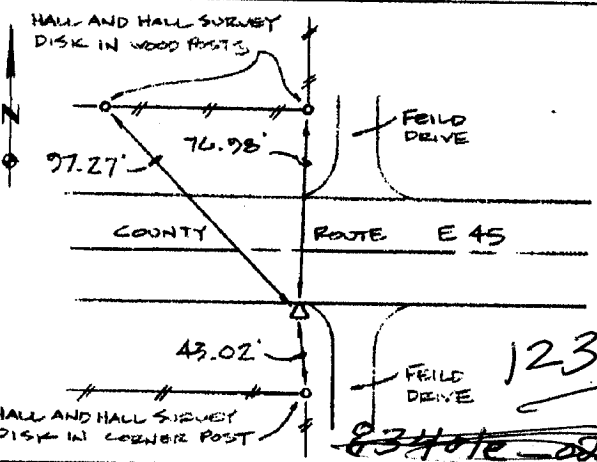


NE COR. 1/4 1/4, SEC. 1, T83N, R4W

REASON FOR PREPARING CERTIFICATE: (A) B, C OR D
PREVIOUS BOOK _____, PAGE _____
SET 1/2" REBAR WITH RED L.S. CAP
11954, 3" DEEP



CORNER INDEX

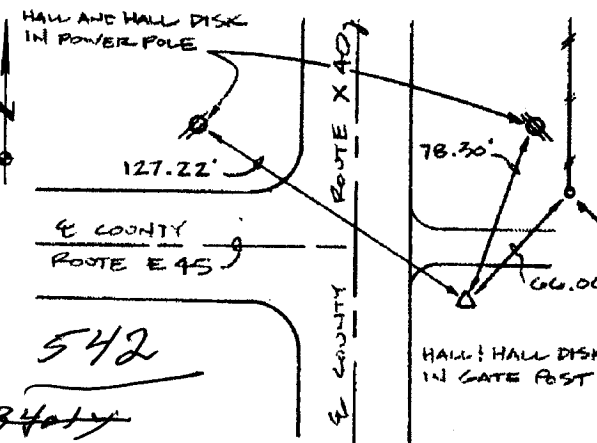


S/4 COR. 1/4 1/4, SEC. 1, T83N, R4W

REASON FOR PREPARING CERTIFICATE: A, B, C OR D
PREVIOUS BOOK _____, PAGE _____
FOUND 1/2" REBAR, 7' SOUTH OF EDGE
OF PAVEMENT



CORNER INDEX



SE COR. 1/4 1/4, SEC. 1, T83N, R4W

REASON FOR PREPARING CERTIFICATE: (A) B, C OR D
PREVIOUS BOOK _____, PAGE _____
SET 1/2" REBAR WITH RED L.S. CAP # 11954,
36.5' EAST OF CENTERLINE



CORNER INDEX

I hereby certify that this land surveying document was prepared and the related survey work was performed by me or under my direct personal supervision and that I am a duly licensed Land Surveyor under the laws of the State of Iowa.

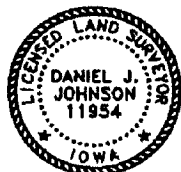
Signed: Daniel J. Johnson Date: 2-27-03

Daniel J. Johnson, L.S. 11954
My license renewal date is December 31, 2004

Pages or sheets covered by this seal: 1

REASON FOR PREPARING CERTIFICATE:

- A) THERE IS NO CERTIFICATE FOR THE CORNER ON FILE WITH THE RECORDER OF THE COUNTY IN WHICH THE CORNER IS LOCATED.
- B) CORNER POSITION DIFFERS FROM THAT SHOWN IN THE PUBLIC RECORDS OF THE COUNTY IN WHICH THE CORNER IS LOCATED
- C) THE CORNER MONUMENT HAS BEEN REPLACED OR MODIFIED.
- D) THE REFERENCE TIES REFERRED TO IN AN EXISTING PUBLIC RECORD ARE INCORRECT OR MISSING.



Sheet Title: U.S. PUBLIC LAND SURVEY CORNER CERTIFICATE

Project Title: X-40



HALL AND HALL ENGINEERS, INC.
209 29TH STREET N.E.
CEDAR RAPIDS, IOWA 52402
(319) 362-9548

Drawn by: DLK

Checked by: DJJ

Approved by: DJJ

Field Book No: COUNTY 3

Scale: NONE

Date: 2/13/03

Project No: Col25

UNITED STATES PUBLIC LAND SURVEY CORNER CERTIFICATE OF

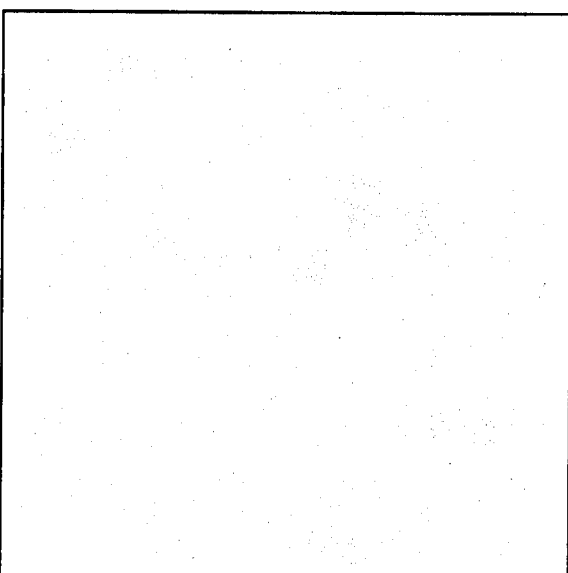
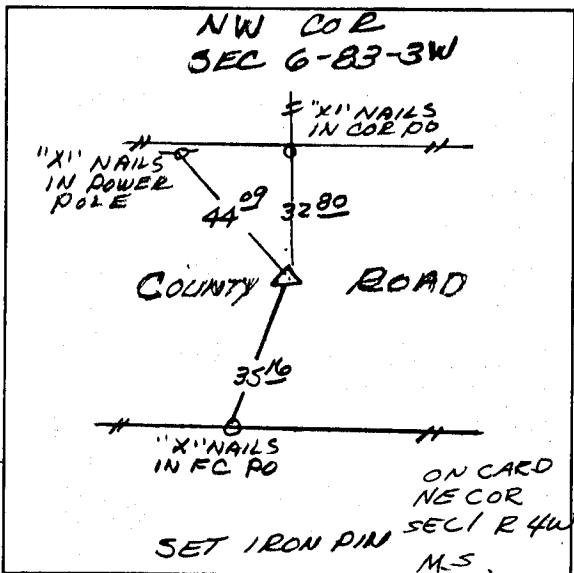
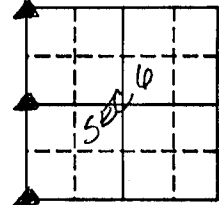
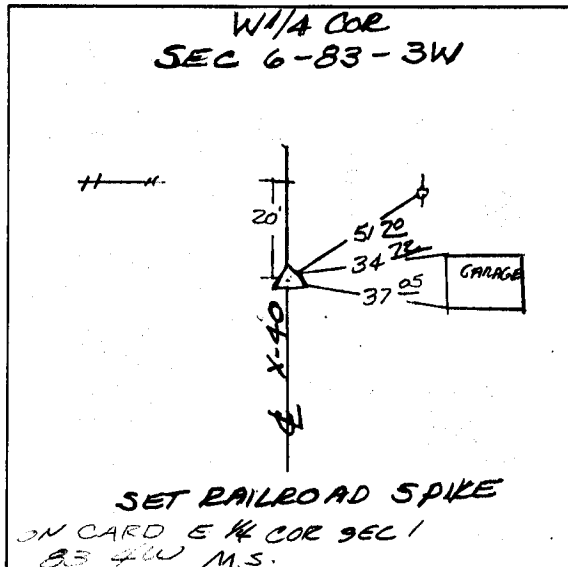
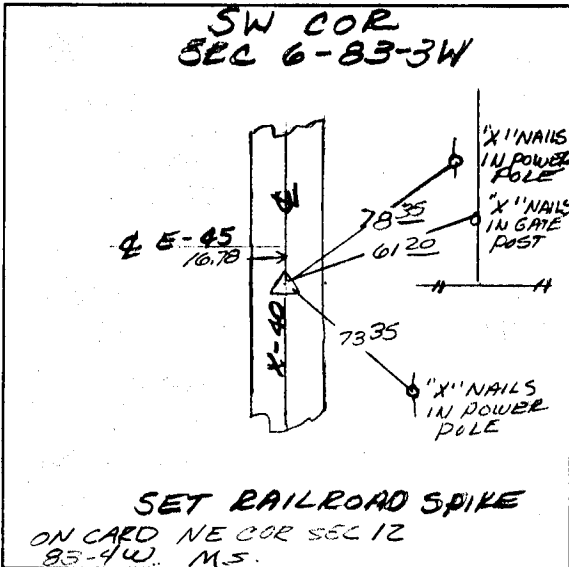
LAND SURVEY MONUMENTS SITUATED IN SECTION 6, TOWNSHIP 83 NORTH, RANGE 3 WEST, OF THE 5TH PRINCIPAL MERIDIAN JONES COUNTY IOWA.
PREVIOUSLY RECORDED IN DOES NOT APPLY IN COUNTY RECORDER'S OFFICE.
(book, page, document number, etc.)

(Show reason for preparing this certificate, the evidence and detailed procedures used in establishing the corner positions and monumentation found or placed.)

MONUMENT DESCRIPTION AND REMARKS: RE-ESTABLISHED SW COR FROM DON BUNTING SURVEY IN THE SE 1/4 SEC 1-83-4W, RE-ESTABLISHED W 1/4 COR BY MEASURING MILE AND USING EVIDENCE OF OLD ROAD TO THE WEST. SEARCHED FOR CONC MONU AT NW COR DID NOT FIND SET IRON PIN USING COUNTY TIES AND EVIDENCE

PLAN - VIEW

(Show a minimum of three reference ties to durable physical objects, relevant monuments and physical conditions that will enable recovery of the corner.)



I hereby certify that the survey work was completed and this certificate was prepared by me or under my direct personal supervision and that I am a duly registered land surveyor under the laws of the state of Iowa. My registration expires December 31, 1992

Signature: Larry R. McGuire
LARRY R. MCGUIRE

Date: 5/7/92 Reg. No. 9019

LAND CORNERS TO BE RECORDED

Corners	Section	Twp.	Range
SW COR	6	83	3W
W 1/4 COR	6	83	3W
NW COR	6	83	3W

