

2005 0180

FILED
RECORDERS OFFICE
JONES COUNTY IOWA

05 JAN 14 PM 1:40

MARIE KRUTZFIELD
RECORDER *No fee*

J.D. TJEPKES, LS. JONES COUNTY ENGINEER'S OFFICE, 19501 HWY. 64, ANAMOSA, IOWA, 52205 (319)462-3785

UNITED STATES PUBLIC LAND SURVEY CORNER CERTIFICATE

LAND SURVEY MONUMENTS SITUATED IN SECTION 13, TOWNSHIP 83
NORTH, RANGE 4 WEST OF THE 5TH P.M., JONES COUNTY, IOWA

CORNERS TO BE INDEXED

CORNER	SECTION	TOWNSHIP	RANGE
NE-SE-SE	13	83N	4W

OFFICE FILE NO. 83413t_011005.tif

PI STA 52+42.118 METRIC SET 5/8"X24" REBAR

68.77'

71.47'

76.13'

124B ✓

NE-SE-SE SEC. 13-83-4 SET 1/2"X24" REBAR W/CAP #11954

FIELD NOTES: 8-27-2002 BK 335 P 51

PREVIOUSLY RECORDED IN BOOK NA, PAGE NA

MONUMENT DESCRIPTION AND HOW ESTABLISHED

NOTE: HALL & HALL MARKED LOCATION IN CONJUNCTION WITH JONES CO. PROJECT NO. CO-53(38)--55-53. SET 1/2"X24" REBAR W/CAP #11954. RETIED AS INDICATED. NORTHEAST CORNER, SOUTHEAST QUARTER, SOUTHEAST QUARTER, SECTION 13, T83N R4W, JONES COUNTY, IOWA.

CORNERS TO BE INDEXED

CORNER	SECTION	TOWNSHIP	RANGE
E-QUARTER	13	83N	4W

OFFICE FILE NO. 83413o_011005.tif

107.21'

76.67'

53.03'

66.84'

1172 ✓

FIELD NOTES: 8-27-2002 BK 335 P 52

E 1/4 SEC. 13-83-4 SET 1/2"X24" REBAR W/CAP #11954

PREVIOUSLY RECORDED IN BOOK NA, PAGE NA

MONUMENT DESCRIPTION AND HOW ESTABLISHED

NOTE: HALL & HALL MARKED LOCATION IN CONJUNCTION WITH JONES CO. PROJECT NO. CO-53(38)--55-53. SET 1/2"X24" REBAR W/CAP #11954. RETIED AS INDICATED. EAST QUARTER CORNER, SECTION 13, T83N R4W, JONES COUNTY, IOWA.

CORNERS TO BE INDEXED

CORNER	SECTION	TOWNSHIP	RANGE
NE-SE-NE	13	83N	4W

OFFICE FILE NO. 83413j_011005.tif

45.57'

0.75'

11.66'

47.80'

1171 ✓

PI STA 60+50.323 METRIC SET 5/8"X24" REBAR

SET 1/2"X24" REBAR W/CAP #11954

NE-SE-NE SEC 13 T83N R4W

FIELD NOTES: 8-27-2002 BK 335 P 52

PREVIOUSLY RECORDED IN BOOK NA, PAGE NA

MONUMENT DESCRIPTION AND HOW ESTABLISHED

NOTE: HALL & HALL MARKED LOCATION IN CONJUNCTION WITH JONES CO. PROJECT NO. CO-53(38)--55-53. SET 1/2"X24" REBAR W/CAP #11954. RETIED AS INDICATED. NORTHEAST CORNER, SOUTHEAST QUARTER, NORTHEAST QUARTER, SECTION 13, T83N R4W, JONES COUNTY, IOWA.

CORNERS TO BE INDEXED

CORNER	SECTION	TOWNSHIP	RANGE
NORTHEAST	13	83N	4W

OFFICE FILE NO. 83413e_011005.tif

162.76'

191.89'

74.93'

103.66'

1180'

544 ✓

NE COR. 13-83-4 SET SURVEY 1/2"X24" DISK REBAR POWER W/CAP POLE #11954

FIELD NOTES: 8-27-2002 BK 335 P 53

PI STA 84+54.834 METRIC SET 5/8"X24" REBAR

PREVIOUSLY RECORDED IN BOOK NA, PAGE NA

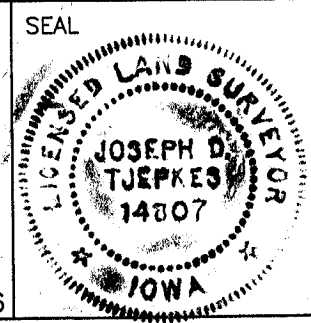
MONUMENT DESCRIPTION AND HOW ESTABLISHED

NOTE: HALL & HALL MARKED LOCATION IN CONJUNCTION WITH JONES CO. PROJECT NO. CO-53(38)--55-53. SET 1/2"X24" REBAR W/CAP #11954. RETIED AS INDICATED. NORTHEAST CORNER SECTION 13, T83N R4W, JONES COUNTY, IOWA.

I hereby declare that this plat, survey or report was made by me or under my direct personal supervision and that I am a duly registered Land Surveyor under the laws of the State of Iowa.

Signed: *[Signature]* 1-14-05

Joseph D. Tjepkes L.S. Iowa Reg. No. 14807
My Registration Renewal Date is December 31, 2006



J.D. TJEPKES LS 14807
JONES COUNTY
ENGINEER'S OFFICE

19501 HWY. 64,
ANAMOSA, IOWA,
52205 (319)462-3785

2003 1052

FILED
RECORDERS OFFICE
JONES COUNTY IOWA

03 MAR 13 PM 12:54

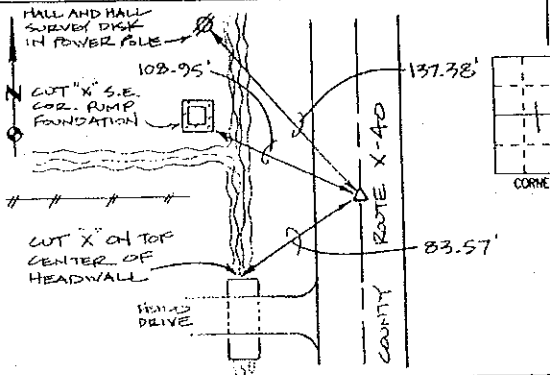
MARIE KRUTZFIELD
RECORDER 600Pd

PREPARED BY HALL & HALL ENGINEERS, INC. 209 29TH STREET N.E. CEDAR RAPIDS, IOWA 52402 (319) 362-9548

LAND SURVEY MONUMENTS SITUATED IN SECTION 13, TOWNSHIP 83 NORTH,
RANGE 4 WEST, OF THE FIFTH PRINCIPAL MERIDIAN, JONES COUNTY IOWA.

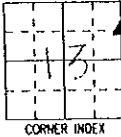
RECOVERY TIE DRAWING

MONUMENT DESCRIPTION AND REMARKS:

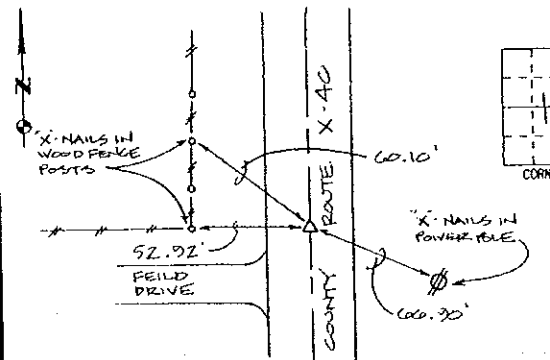


S.E. CORNER, N.E. 1/4 - N.E. 1/4
SECTION 13, T83N, R4W

REASON FOR PREPARING CERTIFICATE: (A) B, C OR D
PREVIOUS BOOK _____ PAGE _____
SET 1/2" REBAR WITH RED L.S.
CAP # 11954

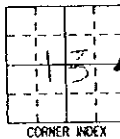


CORNER INDEX

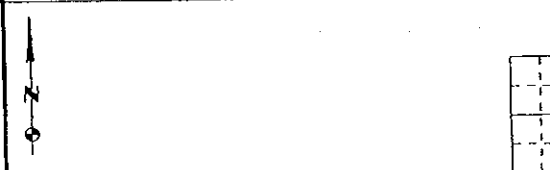


E. 1/4 COR., SECTION 13, T83N, R4W

REASON FOR PREPARING CERTIFICATE: (A) B, C OR D
PREVIOUS BOOK _____ PAGE _____
SET 1/2" REBAR WITH RED L.S.
CAP # 11954



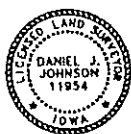
CORNER INDEX



REASON FOR PREPARING CERTIFICATE: A, B, C OR D
PREVIOUS BOOK _____ PAGE _____



CORNER INDEX



I hereby certify that this land surveying document was prepared and the related survey work was performed by me or under my direct personal supervision and that I am a duly licensed Land Surveyor under the laws of the State of Iowa.

Signed: Daniel J. Johnson Date: 2-27-03
Daniel J. Johnson, L.S. 11954
My license renewal date is December 31, 2004

Pages or sheets covered by this seal: 1
(Entire submission unless specified here)

REASON FOR PREPARING CERTIFICATE:

- A) THERE IS NO CERTIFICATE FOR THE CORNER ON FILE WITH THE RECORDER OF THE COUNTY IN WHICH THE CORNER IS LOCATED.
- B) CORNER POSITION DIFFERS FROM THAT SHOWN IN THE PUBLIC RECORDS OF THE COUNTY IN WHICH THE CORNER IS LOCATED.
- C) THE CORNER MONUMENT HAS BEEN REPLACED OR MODIFIED.
- D) THE REFERENCE TIES REFERRED TO IN AN EXISTING PUBLIC RECORD ARE INCORRECT OR MISSING.

SHEET TITLE: U.S. PUBLIC LAND SURVEY CORNER CERTIFICATE

PROJECT TITLE: JONES COUNTY X-40

HALL AND HALL ENGINEERS, INC.
209 29TH STREET N.E.
CEDAR RAPIDS, IOWA 52402
(319) 362-9548

DRAWN BY: DJL
CHECKED BY: DJJ
APPROVED BY: DJJ
DATE: 7/15/02

SCALE: NONE
SHEET NO: COUNTY 3
PLOT NO: 6125

2002 3008

FILED
RECORDERS OFFICE
JONES COUNTY IOWA

83413j-081602

834130-081602

02 AUG 16 PM 12:34

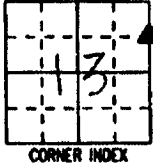
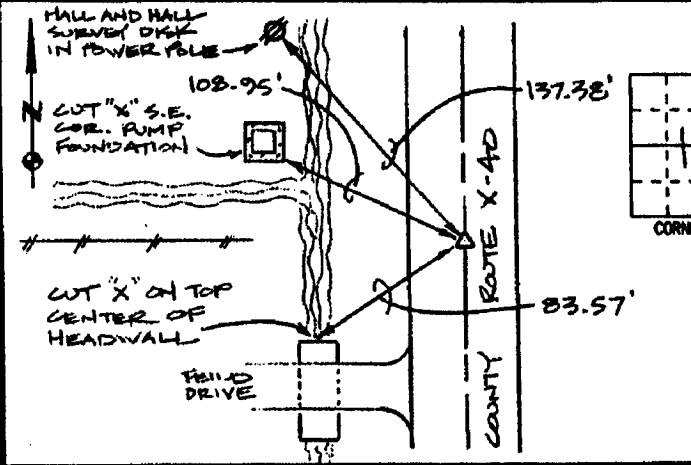
MARIE KRUTZFIELD
RECORDER 6.00 pd

PREPARED BY HALL & HALL ENGINEERS, INC. 209 29TH STREET N.E. CEDAR RAPIDS, IOWA 52402 (319) 362-9548

LAND SURVEY MONUMENTS SITUATED IN SECTION 13, TOWNSHIP 83 NORTH,
RANGE 4 WEST, OF THE FIFTH PRINCIPAL MERIDIAN, JONES COUNTY IOWA.

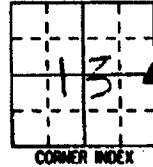
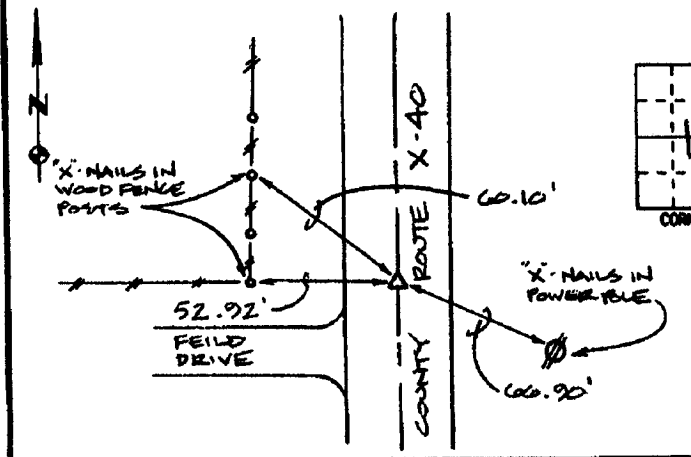
RECOVERY TIE DRAWING

MONUMENT DESCRIPTION AND REMARKS:



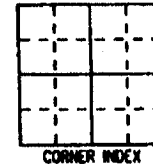
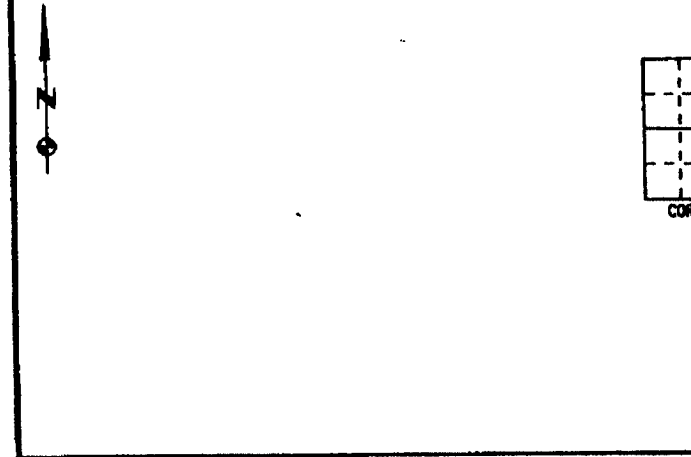
S.E. CORNER, N.E. 1/4 - N.E. 1/4
SECTION 13, T83N, R4W

REASON FOR PREPARING CERTIFICATE: (A) B, C OR D
PREVIOUS BOOK _____, PAGE _____
SET 1/2" REBAR WITH RED L.S.
CAP # 11254

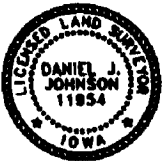


E 1/4 COR., SECTION 13, T83N, R4W

REASON FOR PREPARING CERTIFICATE: (A) B, C OR D
PREVIOUS BOOK _____, PAGE _____
SET 1/2" REBAR WITH RED L.S.
CAP # 11254



REASON FOR PREPARING CERTIFICATE: A, B, C OR D
PREVIOUS BOOK _____, PAGE _____



I hereby certify that this land surveying document was prepared and the related survey work was performed by me or under my direct personal supervision and that I am a duly licensed Land Surveyor under the laws of the State of Iowa.

Signed: Daniel J. Johnson Date: 8-16-02
Daniel J. Johnson, L.S. 11854
My license renewal date is December 31, 2002

Pages or sheets covered by this seal:
(Entire submission unless specified here) 1 of 1

REASON FOR PREPARING CERTIFICATE:

- A) THERE IS NO CERTIFICATE FOR THE CORNER ON FILE WITH THE RECORDER OF THE COUNTY IN WHICH THE CORNER IS LOCATED.
- B) CORNER POSITION DIFFERS FROM THAT SHOWN IN THE PUBLIC RECORDS OF THE COUNTY IN WHICH THE CORNER IS LOCATED.
- C) THE CORNER MONUMENT HAS BEEN REPLACED OR MODIFIED.
- D) THE REFERENCE TIES REFERRED TO IN AN EXISTING PUBLIC RECORD ARE INCORRECT OR MISSING.

SHEET NO. _____ U.S. PUBLIC LAND SURVEY CORNER CERTIFICATE

PROJECT NO. JONES COUNTY X-40



HALL AND HALL ENGINEERS, INC.
209 29TH STREET N.E.
CEDAR RAPIDS, IOWA 52402
(319) 362-9548

DATE: <u>7/15/02</u>	SCALE: NONE	FNO: COUNTY 3	SHO: <u>6125</u>
----------------------	-------------	---------------	------------------