

COPY

Jones County Iowa
 Marie Krutzfield, Recorder
Fee Book 2010 3476
 12/13/2010 @0215PM
 ZSC SEC COR CERT
 Book: Page: # Pages: 1
 Total Fees: \$0.00

PREPARED BY
CLARENCE J. WALTON, JONES COUNTY ENGINEER'S OFFICE, 19501 HWY. 64, ANAMOSA, IOWA, 52205 (319) 462-3785

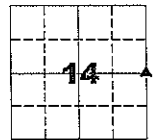
UNITED STATES PUBLIC LAND SURVEY CORNER CERTIFICATE

**LAND SURVEY MONUMENTS SITUATED IN SECTION 14, TOWNSHIP 83 NORTH,
 RANGE 4 WEST OF THE 5TH PRINCIPAL MERIDIAN, JONES COUNTY, IOWA.**

PROJECT: M-1211

STATE PLANE COORDINATE
 NAD 83 IOWA NORTH
 N 3470488.76
 E 5527776.14

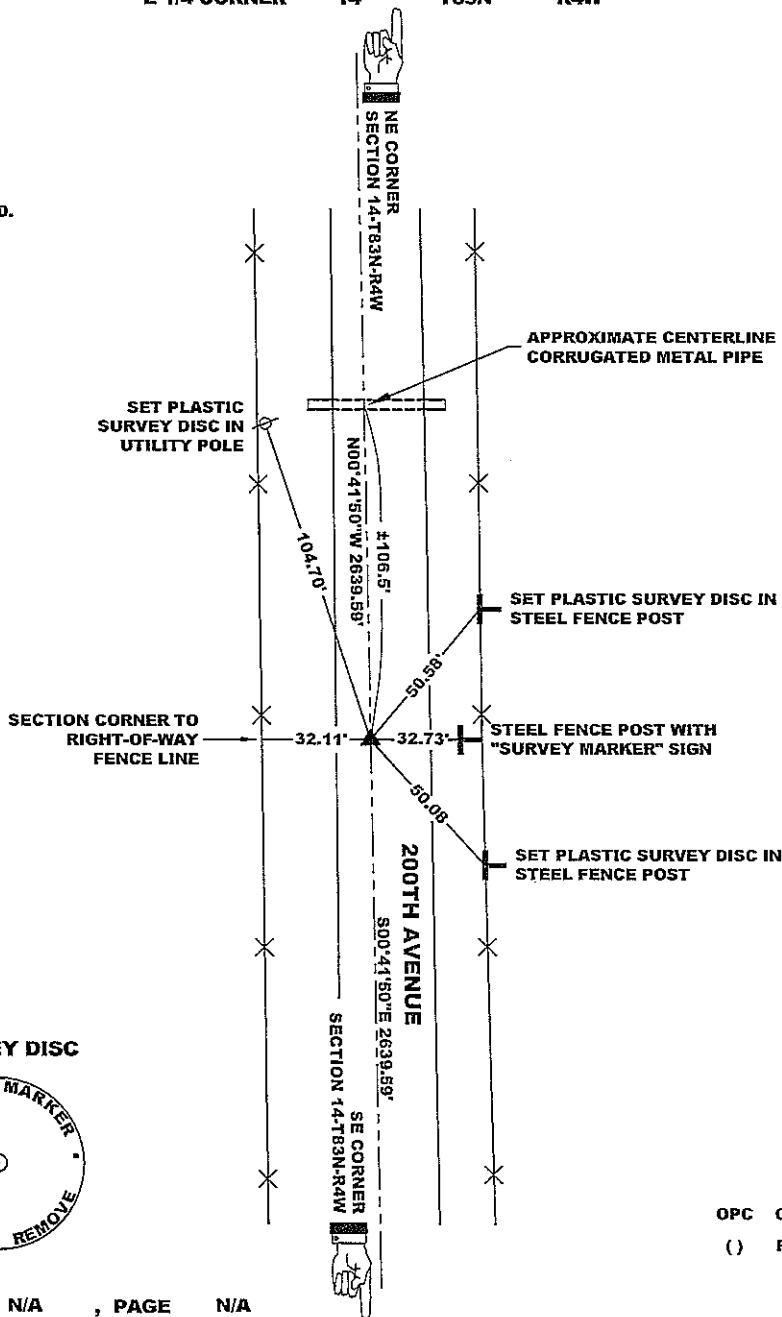
CORNER SECTION TOWNSHIP RANGE
 E 1/4 CORNER 14 T83N R4W



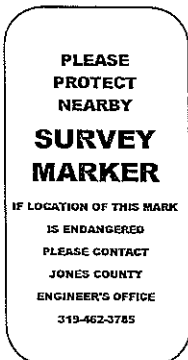
NO SCALE

NOTES:

- 1) THE STATE PLANE COORDINATES AS SHOWN ARE FOR CONVENIENCE ONLY. THE TIES AS SHOWN SHOULD BE USED TO REPLACE THE CORNER, IF DESTROYED.
- 2) COORDINATES AS SHOWN ARE GRID COORDINATES AND BASED ON JONES COUNTY G.P.S. CONTROL NETWORK WHICH IN TURN IS BASED ON NAD 83 IOWA NORTH DATUM.
- 3) BASIS OF BEARINGS ARE BASED ON JONES COUNTY G.P.S. CONTROL NETWORK.
- 4) ALL MEASUREMENTS ARE IN FEET AND DECIMALS THEREOF. LONG DISTANCES SHOWN ARE GRID DISTANCES.



"SURVEY MARKER" SIGN



SURVEY DISC

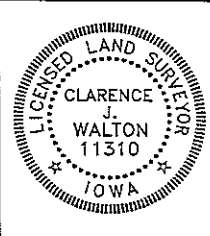


OPC ORANGE PLASTIC CAP
 () RECORDED AS

PREVIOUSLY RECORDED IN BOOK N/A, PAGE N/A

MONUMENT DESCRIPTION AND HOW ESTABLISHED DUG EXTENSIVELY AND FOUND NOTHING BUT DIRT AND AN ODD PIECE OF FENCE WIRE HERE AND THERE. SET A 5/8"X24" REBAR WITH ORANGE PLASTIC CAP #11310 ON LINE AND EQUIDISTANT BETWEEN THE NE CORNER OF SECTION 14-T83N-R4W AND THE NE CORNER OF SECTION 23-T83N-R4W 8" BELOW ROAD SURFACE. SET "SURVEY MARKER" SIGN ALONG EAST R.O.W. FENCE AS WITNESS TO CORNER.

FIELD BOOK MISC. 2009-2010, PAGE 145. DATE OF SURVEY: 11/9/10



I hereby certify that this land surveying document and the related survey work was performed by me or under my direct personal supervision and that I am a duly registered Land Surveyor under the laws of the State of Iowa.
 Signed: *Clarence J. Walton* 12/9/10
 Clarence J. Walton, L.S.
 My Registration Renewal Date is December 31, 2011
 Iowa License Number 11310
 Pages or sheets covered by this seal: 1 of 1.

- A. THERE IS NO CERTIFICATE FOR THE CORNER ON FILE WITH THE RECORDER OF THE COUNTY IN WHICH THE CORNER IS LOCATED.
- B. THE CORNER MONUMENT HAS BEEN REPLACED OR MODIFIED.
- C. THE SURVEYOR IN RESPONSIBLE CHARGE OF THE LAND SURVEYING ACCEPTS A CORNER POSITION THAT DIFFERS FROM THAT SHOWN IN THE PUBLIC RECORDS OF THE COUNTY IN WHICH THE CORNER IS LOCATED.
- D. THE REFERENCE TIES REFERRED TO IN AN EXISTING PUBLIC RECORD NO LONGER EXIST.

CORNERS TO BE INDEXED

CORNER	SECTION	TOWNSHIP	RANGE
E 1/4 CORNER	14	83N	4W
W 1/4 CORNER	13	83N	4W

JONES COUNTY ENGINEER'S OFFICE



19501 HWY. 64, ANAMOSA, IOWA 52205
 (319) 462-3785