

COPY

Jones County Iowa  
 Marie Krutzfield, Recorder  
 Fee Book 2010 3474

12/13/2010 @0213PM  
 ZSC SEC COR CERT # Pages: 1  
 Book: Page: \$0.00  
 Total Fees:

PREPARED BY

CLARENCE J. WALTON, JONES COUNTY ENGINEER'S OFFICE, 19501 HWY. 64, ANAMOSA, IOWA, 52205 (319) 462-3785

# UNITED STATES PUBLIC LAND SURVEY CORNER CERTIFICATE

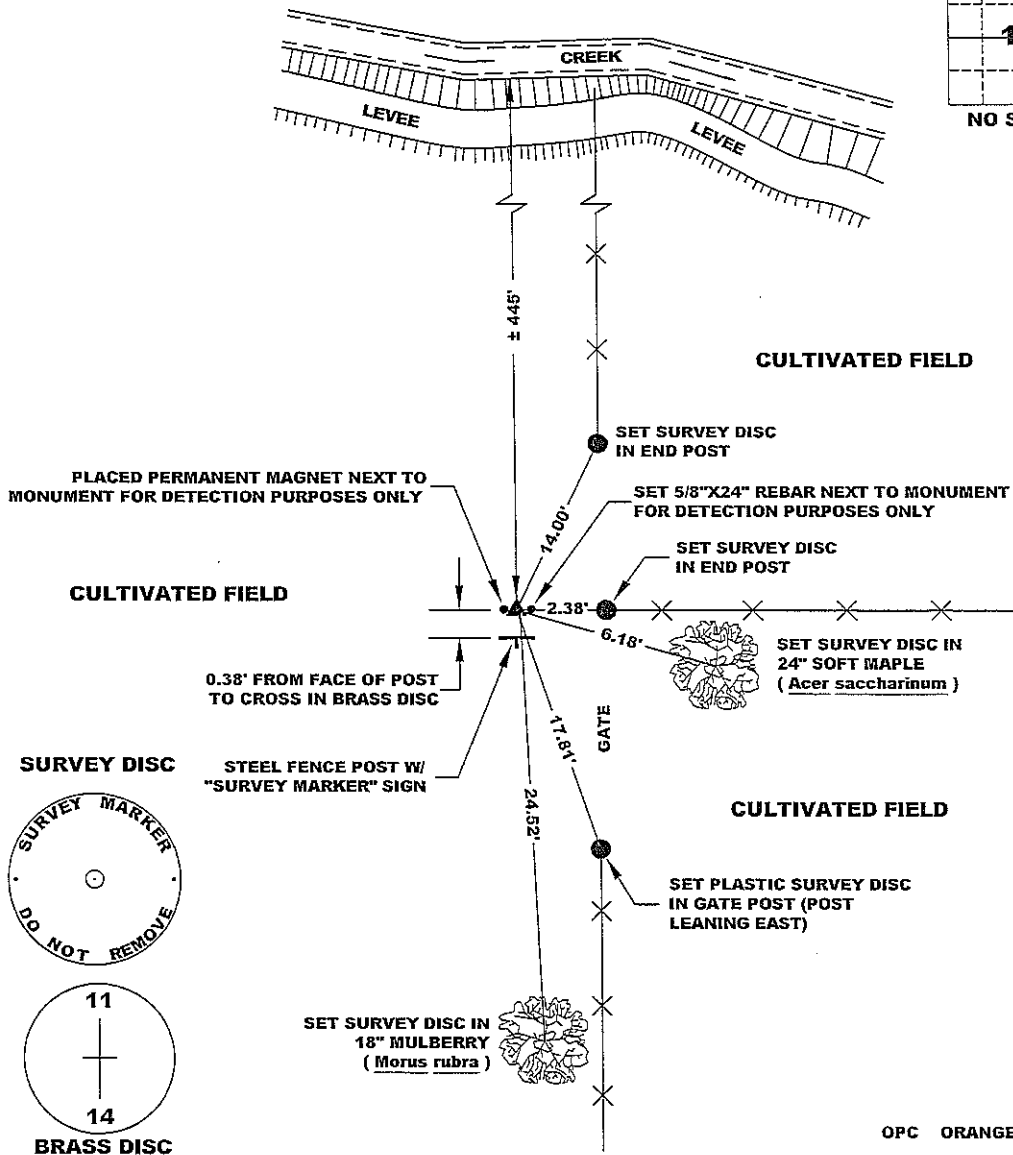
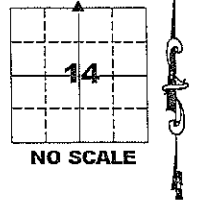
LAND SURVEY MONUMENTS SITUATED IN SECTION 14, TOWNSHIP 83 NORTH,  
 RANGE 4 WEST OF THE 5TH PRINCIPAL MERIDIAN, JONES COUNTY, IOWA.

PROJECT: M-1211

STATE PLANE COORDINATE  
 NAD 83 IOWA NORTH  
 N 3473114.58  
 E 5525034.38

NOTE:  
 THE STATE PLANE  
 COORDINATE AS INDICATED  
 IS FOR CONVENIENCE ONLY.  
 THE TIES AS SHOWN SHOULD  
 BE USED TO REPLACE THE  
 CORNER, IF DESTROYED

CORNER SECTION TOWNSHIP RANGE  
 N 1/4 CORNER 14 T83N R4W



"SURVEY MARKER" SIGN

PLEASE PROTECT NEARBY  
**SURVEY MARKER**  
 IF LOCATION OF THIS MARK IS ENDANGERED PLEASE CONTACT JONES COUNTY ENGINEER'S OFFICE 319-462-3785

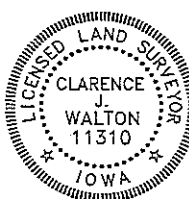
SURVEY DISC

BRASS DISC

PREVIOUSLY RECORDED IN BOOK N/A, PAGE N/A

MONUMENT DESCRIPTION AND HOW ESTABLISHED FOUND 4"x4" SQUARE CONCRETE MONUMENT W/ BRASS DISC MARKED AS SHOWN ABOVE IN DRAWING. MONUMENT WAS 9" BELOW EXISTING GROUND SURFACE. MONUMENT HAS NO MAGNETIC SIGNATURE THAT CAN BE DETECTED. PLACED 5/8"x24" REBAR AGAINST THE EAST FACE AND SLIGHTLY BELOW THE SURFACE OF THE MONUMENT AND FURTHER SET WAS A PERMANENT MAGNET NEXT TO THE WEST FACE AND SLIGHTLY BELOW THE SURFACE OF THE MONUMENT. A STEEL FENCE POST WITH A YELLOW "SURVEY MARKER" SIGN ATTACHED WAS SET 0.38" SOUTH OF MONUMENT'S CENTER TO BEAR WITNESS TO THE CORNER.

FIELD BOOK MISC. 2009-2010, PAGE 154. DATE OF SURVEY: 9/14/2010



I hereby certify that this land surveying document and the related survey work was performed by me or under my direct personal supervision and that I am a duly registered Land Surveyor under the laws of the State of Iowa.  
 Signed: *Clarence J. Walton* 12/9/10  
 Clarence J. Walton, L.S.  
 My Registration Renewal Date is December 31, 2011  
 Iowa License Number 11310  
 Pages or sheets covered by this seal: 1 of 1.

- A. THERE IS NO CERTIFICATE FOR THE CORNER ON FILE WITH THE RECORDER OF THE COUNTY IN WHICH THE CORNER IS LOCATED.
- B. THE CORNER MONUMENT HAS BEEN REPLACED OR MODIFIED.
- C. THE SURVEYOR IN RESPONSIBLE CHARGE OF THE LAND SURVEYING ACCEPTS A CORNER POSITION THAT DIFFERS FROM THAT SHOWN IN THE PUBLIC RECORDS OF THE COUNTY IN WHICH THE CORNER IS LOCATED.
- D. THE REFERENCE TIES REFERRED TO IN AN EXISTING PUBLIC RECORD NO LONGER EXIST.

CORNERS TO BE INDEXED

CORNER	SECTION	TOWNSHIP	RANGE
N 1/4 CORNER	14	83N	4W
S 1/4 CORNER	11	83N	4W

JONES COUNTY ENGINEER'S OFFICE



19501 HWY. 64, ANAMOSA, IOWA 52205  
 (319) 462-3785

# THIS IS NOT A CERTIFICATION

JONES COUNTY ENGINEER'S OFFICE, 19501 HWY. 64, ANAMOSA, IOWA, 52205 (319)462-3785

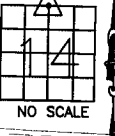
## UNITED STATES PUBLIC LAND SURVEY CORNER CERTIFICATE

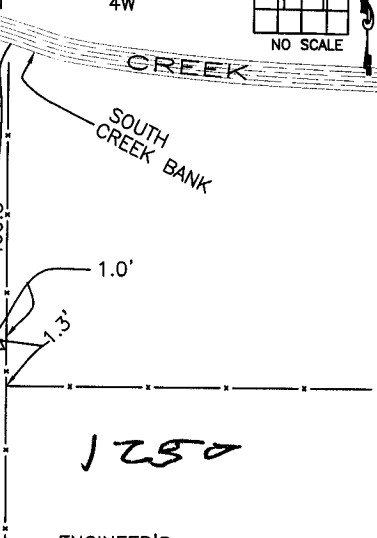
LAND SURVEY MONUMENTS SITUATED IN SECTION 14, TOWNSHIP 83  
NORTH, RANGE 4 WEST OF THE 5TH P.M., JONES COUNTY, IOWA

CORNERS TO BE INDEXED

CORNER NORTH QUARTER	SECTION 14	TOWNSHIP 83N	RANGE 4W
-------------------------	---------------	-----------------	-------------

OFFICE FILE NO. \_\_\_\_\_  
83414c\_080803.jpg





1936 INFORMATION

1250

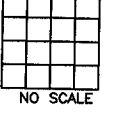
ENGINEER'S

PREVIOUSLY RECORDED IN BOOK #6, PAGE 44  
MONUMENT DESCRIPTION AND HOW ESTABLISHED IN 1936 THE COUNTY SURVEY CREW FOUND 1"X8"X14" LIMESTONE . LOWERED STONE TO DEPTH OF 4' AND SET STANDARD CONCRETE MONUMENT ABOVE WITH TOP OF MONUMENT FLUSH WITH GROUND. NORTH QUARTER CORNER OF SECTION 14, TOWNSHIP 83 NORTH, RANGE 4 WEST OF THE 5TH PM, JONES COUNTY, IOWA.

CORNERS TO BE INDEXED

CORNER	SECTION	TOWNSHIP	RANGE
--------	---------	----------	-------

OFFICE FILE NO. \_\_\_\_\_

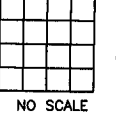


PREVIOUSLY RECORDED IN BOOK \_\_\_\_\_, PAGE \_\_\_\_\_  
MONUMENT DESCRIPTION AND HOW ESTABLISHED \_\_\_\_\_  
\_\_\_\_\_  
\_\_\_\_\_

CORNERS TO BE INDEXED

CORNER	SECTION	TOWNSHIP	RANGE
--------	---------	----------	-------

OFFICE FILE NO. \_\_\_\_\_

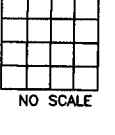


PREVIOUSLY RECORDED IN BOOK \_\_\_\_\_, PAGE \_\_\_\_\_  
MONUMENT DESCRIPTION AND HOW ESTABLISHED \_\_\_\_\_  
\_\_\_\_\_  
\_\_\_\_\_

CORNERS TO BE INDEXED

CORNER	SECTION	TOWNSHIP	RANGE
--------	---------	----------	-------

OFFICE FILE NO. \_\_\_\_\_



PREVIOUSLY RECORDED IN BOOK \_\_\_\_\_, PAGE \_\_\_\_\_  
MONUMENT DESCRIPTION AND HOW ESTABLISHED \_\_\_\_\_  
\_\_\_\_\_  
\_\_\_\_\_

~~I hereby declare that this plat, survey or report was made by me or under my direct personal supervision and that I am a duly registered Land Surveyor under the laws of the State of Iowa.~~

Signed: \_\_\_\_\_

SEAL

JONES COUNTY  
ENGINEER'S OFFICE

19501 HWY. 64,  
ANAMOSA, IOWA,  
52205 (319)462-3785