

2001 3745

FILED  
RECORDERS OFFICE  
JONES COUNTY IOWA

01 OCT 30 PM 1:53

MARIE KRUTZFIELD  
RECORDER 6.00Pd

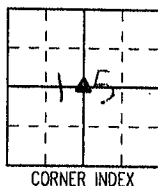
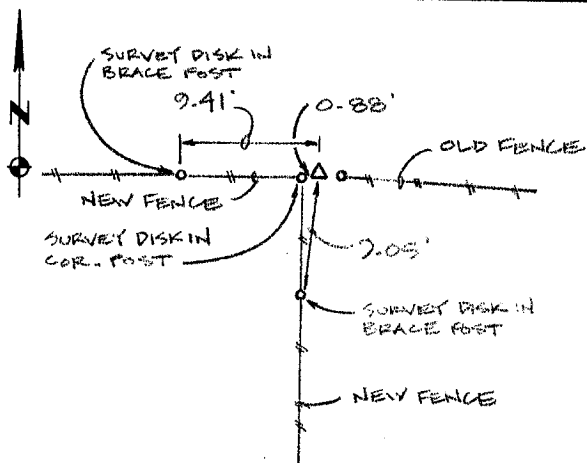
PREPARED BY HALL & HALL ENGINEERS, INC. 209 29TH STREET N.E. CEDAR RAPIDS, IOWA 52402 (319) 362-9548

LAND SURVEY MONUMENTS SITUATED IN SECTION 15, TOWNSHIP 83 NORTH,  
RANGE 4 WEST, OF THE FIFTH PRINCIPAL MERIDIAN, JONES COUNTY IOWA.

RECOVERY TIE DRAWING

MONUMENT DESCRIPTION AND REMARKS:

CENTER, SECTION 15-83-4

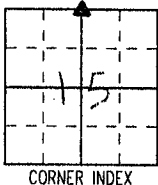
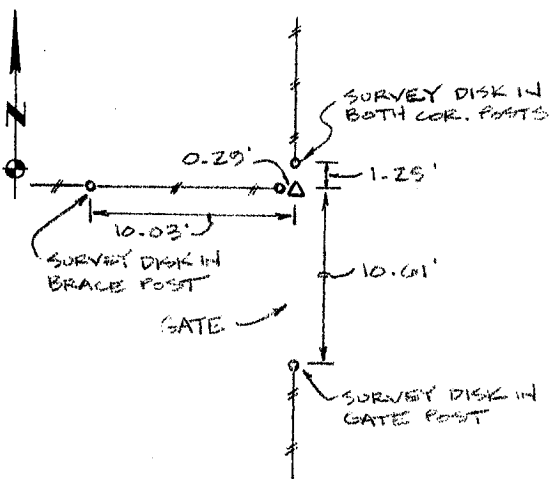


REASON FOR PREPARING CERTIFICATE: (A) B, C OR D  
PREVIOUS BOOK \_\_\_\_\_, PAGE \_\_\_\_\_

FOUND STONE FLUSH WITH GROUND  
AT INTERSECTION OF FENCES EAST,  
WEST AND SOUTH

83415m-090401.tif  
ID# 1030

N. 1/4 COR., SECTION 15-83-4

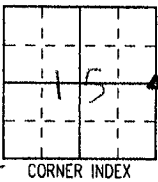
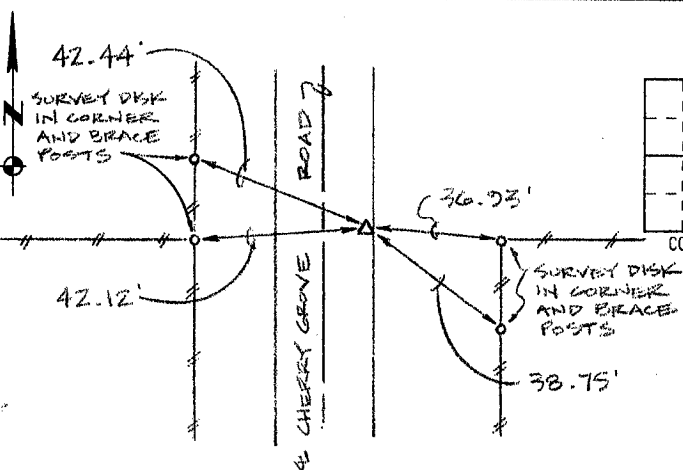


REASON FOR PREPARING CERTIFICATE: (A) B, C OR D  
PREVIOUS BOOK \_\_\_\_\_, PAGE \_\_\_\_\_

FOUND 5/8" REBAR WITH YELLOW L.S.  
CAP

83415c-090401.tif  
# 1031

E. 1/4 COR., SECTION 15-83-4



REASON FOR PREPARING CERTIFICATE: (A) B, C OR D  
PREVIOUS BOOK \_\_\_\_\_, PAGE \_\_\_\_\_

SET 1/2" REBAR WITH RED L.S. CAP  
# 11954 6" DEEP, 4' NORTH OF  
EAST-WEST FENCE AND 9' EAST  
OF 1/2 CHERRY GROVE ROAD

83415o-090401.tif  
# 1032

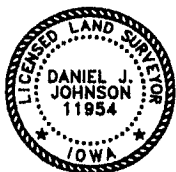
I hereby certify that this land surveying document was prepared and the related survey work was performed by me or under my direct personal supervision and that I am a duly licensed Land Surveyor under the laws of the State of Iowa.

Signed: [Signature] Date: 9-4-01  
Daniel J. Johnson, L.S. 11954  
My license renewal date is December 31, 2002

Pages or sheets covered by this seal:  
(Entire submission unless specified here)

REASON FOR PREPARING CERTIFICATE:

- A) THERE IS NO CERTIFICATE FOR THE CORNER ON FILE WITH THE RECORDER OF THE COUNTY IN WHICH THE CORNER IS LOCATED.
- B) CORNER POSITION DIFFERS FROM THAT SHOWN IN THE PUBLIC RECORDS OF THE COUNTY IN WHICH THE CORNER IS LOCATED.
- C) THE CORNER MONUMENT HAS BEEN REPLACED OR MODIFIED.
- D) THE REFERENCE TIES REFERRED TO IN AN EXISTING PUBLIC RECORD ARE INCORRECT OR MISSING.



Sheet Title: U.S. PUBLIC LAND SURVEY CORNER CERTIFICATE

Project Title: SIVER



HALL AND HALL ENGINEERS, INC.  
209 29TH STREET N.E.  
CEDAR RAPIDS, IOWA 52402  
(319) 362-9548

Drawn by: DLK    Checked by:    Approved by: 1    Field Book No: OT 60    Scale: N.T.S.    Date: 9/4/01    Project No: 7361