

2005 4155

FILED
RECORDERS OFFICE
JONES COUNTY IOWA

05 NOV 17 AM 9:03

MARIE KRUTZFIELD
RECORDER *no fee*

GREENFIELD

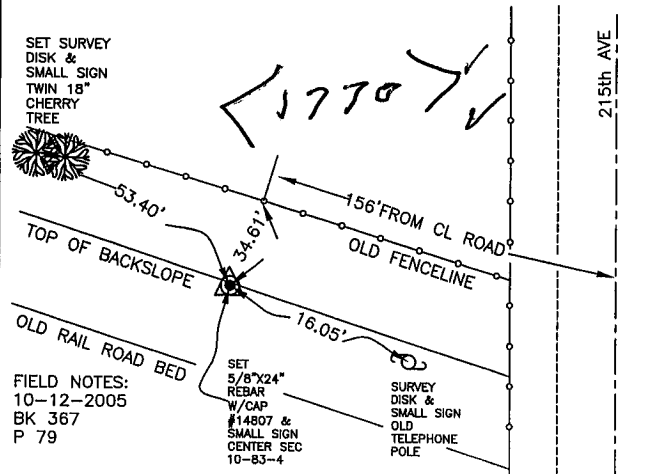
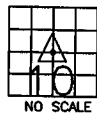
J.D. TJEPKES, LS. JONES COUNTY ENGINEER'S OFFICE, 19501 HWY. 64, ANAMOSA, IOWA, 52205 (319)462-3785

UNITED STATES PUBLIC LAND SURVEY CORNER CERTIFICATE

LAND SURVEY MONUMENTS SITUATED IN SECTION 10, TOWNSHIP 83
NORTH, RANGE 4 WEST OF THE 5TH P.M., JONES COUNTY, IOWA

CORNERS TO BE INDEXED

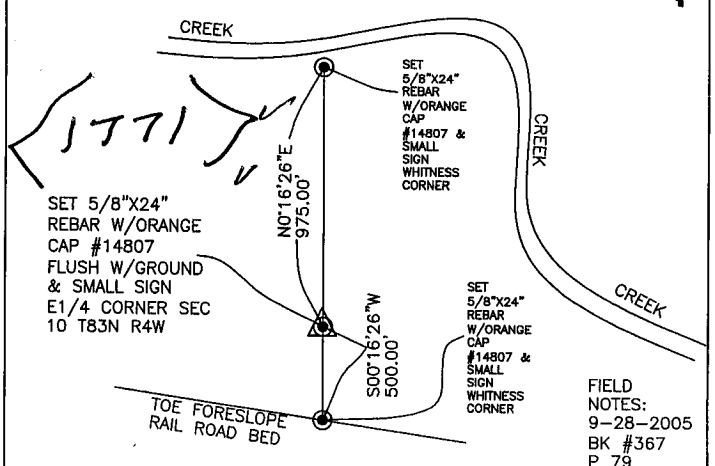
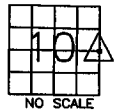
CORNER SECTION TOWNSHIP RANGE
CENTER 10 83N 4W
OFFICE FILE NO.
83410m_111605.tif



PREVIOUSLY RECORDED IN BOOK NA, PAGE NA
MONUMENT DESCRIPTION AND HOW ESTABLISHED
PER BREAKDOWN OF SECTION 10 T83N R4W, SET 5/8\"/>

CORNERS TO BE INDEXED

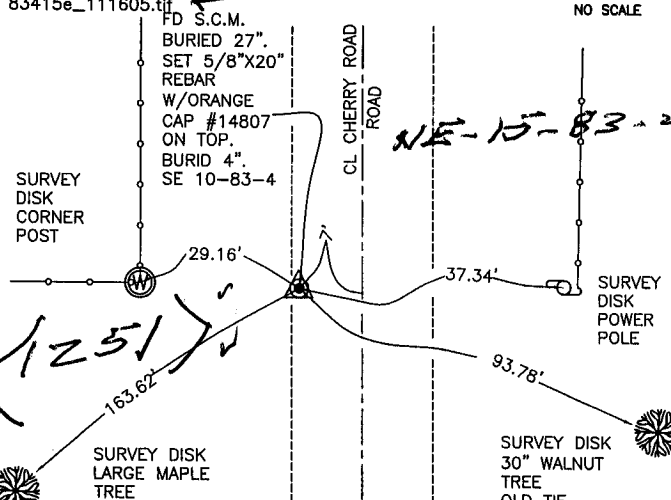
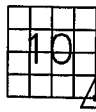
CORNER SECTION TOWNSHIP RANGE
E1/4 10 83N 4W
OFFICE FILE NO.
83410o_111605.tif



PREVIOUSLY RECORDED IN BOOK NA, PAGE NA
MONUMENT DESCRIPTION AND HOW ESTABLISHED
PER PROPORTIONATE DISTANCE AND ON LINE BETWEEN FD S.C.M, PER RECORD TIES, SE CORNER SEC 10 AND FD BRASS PLUG, PER RECORD TIES, NE CORNER SEC 10, SET 5/8\"/>

CORNERS TO BE INDEXED

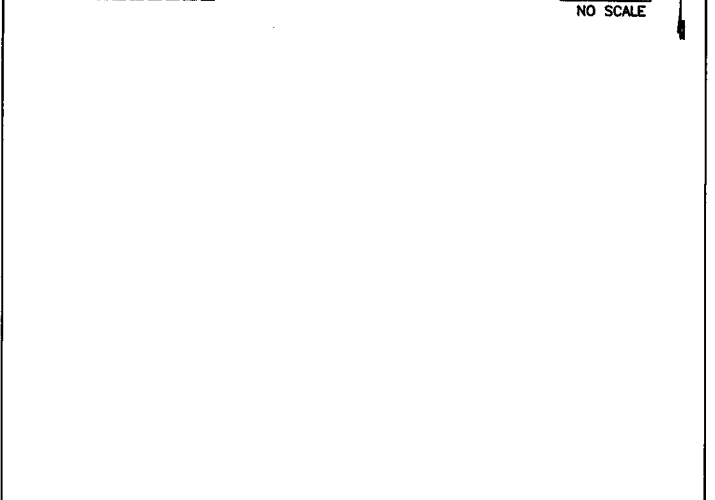
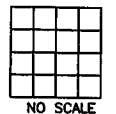
CORNER SECTION TOWNSHIP RANGE
SE COR 10 83N 4W
OFFICE FILE NO.
83415e_111605.tif



PREVIOUSLY RECORDED IN BOOK NA, PAGE NA
MONUMENT DESCRIPTION AND HOW ESTABLISHED

CORNERS TO BE INDEXED

CORNER SECTION TOWNSHIP RANGE
OFFICE FILE NO.



PREVIOUSLY RECORDED IN BOOK NA, PAGE NA

NOT A CERTIFICATE

J.D. TJEPKES, LS. JONES COUNTY ENGINEER'S OFFICE, 19501 HWY. 64, ANAMOSA, IOWA, 52205 (319)462-3785

UNITED STATES PUBLIC LAND SURVEY CORNER CERTIFICATE

LAND SURVEY MONUMENTS SITUATED IN SECTION 10, TOWNSHIP 83
NORTH, RANGE 4 WEST OF THE 5TH P.M., JONES COUNTY, IOWA

CORNERS TO BE INDEXED

CORNER	SECTION	TOWNSHIP	RANGE
CENTER	10	83N	4W

OFFICE FILE NO. 83410m_111605.tif

FIELD NOTES:
10-12-2005
BK 367
P 79

PREVIOUSLY RECORDED IN BOOK NA, PAGE NA
MONUMENT DESCRIPTION AND HOW ESTABLISHED
PER BREAKDOWN OF SECTION 10 T83N R4W, SET 5/8"X24" REBAR W/ORANGE CAP #14807 & JONES COUNTY SIGN ON POST, TOP OF NORTH BACKSLOPE OLD RAIL ROAD CUT. TIES AS INDICATED FOR CENTER SECTION 10 T83N R4W.

CORNERS TO BE INDEXED

CORNER	SECTION	TOWNSHIP	RANGE
E1/4	10	83N	4W

OFFICE FILE NO. 83410o_111605.tif

FIELD NOTES:
9-28-2005
BK #367
P 79

PREVIOUSLY RECORDED IN BOOK NA, PAGE NA
MONUMENT DESCRIPTION AND HOW ESTABLISHED
PER PROPORTIONATE DISTANCE AND ON LINE BETWEEN FD S.C.M, PER RECORD TIES, @ SE CORNER SEC 10 AND FD BRASS PLUG, PER RECORD TIES, @ NE CORNER SEC 10, SET 5/8"X24" REBAR W/ORANGE CAP #14807, FLUSH W/GROUND. TIES AS INDICATED FOR E1/4 COR. SECTION 10 T83N R4W.

CORNERS TO BE INDEXED

CORNER	SECTION	TOWNSHIP	RANGE
SE COR	10	83N	4W

OFFICE FILE NO. 83415e_111605.tif

PREVIOUSLY RECORDED IN BOOK NA, PAGE NA
MONUMENT DESCRIPTION AND HOW ESTABLISHED
PER OLD TIES ON RECORD AT ENGINEER'S OFFICE DATED 1936, DUG AND FOUND CONCRETE MONUMENT BURIED 27" ON WEST SHOULDER LINE. SET 5/8"X20" REBAR W/ORANGE CAP #14807 ON TOP OF MONUMENT. TOP OF REBAR BURIED 4". TIES AS INDICATED FOR SE CORNER SECTION 10 T83N R4W.

CORNERS TO BE INDEXED

CORNER	SECTION	TOWNSHIP	RANGE

OFFICE FILE NO. _____

PREVIOUSLY RECORDED IN BOOK _____, PAGE _____
MONUMENT DESCRIPTION AND HOW ESTABLISHED _____

I hereby declare that this plat, survey or report was made by me or under my direct personal supervision and that I am a duly registered Land Surveyor under the laws of the State of Iowa.

Signed: _____

Joseph D. Tjepkes L.S. Iowa Reg. No. 14807
My Registration Renewal Date is December 31, 2006

SEAL

J.D. TJEPKES LS 14807
JONES COUNTY
ENGINEER'S OFFICE

19501 HWY. 64,
ANAMOSA, IOWA,
52205 (319)462-3785

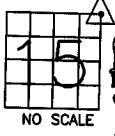
THIS IS NOT A CERTIFICATION

JONES COUNTY ENGINEER'S OFFICE, 19501 HWY. 64, ANAMOSA, IOWA, 52205 (319)462-3785

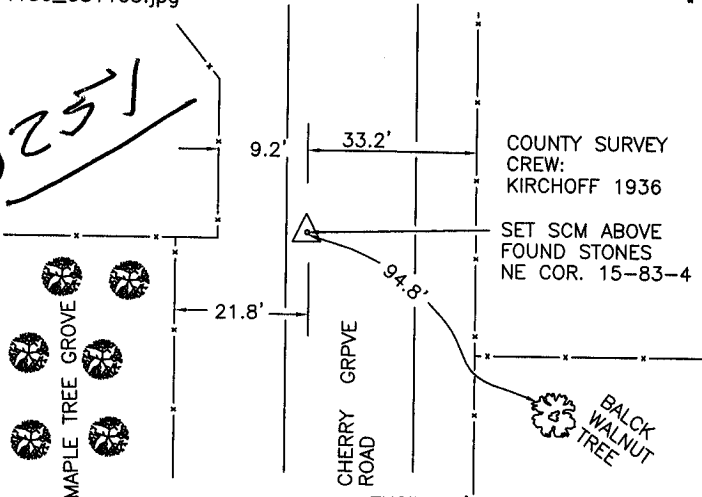
UNITED STATES PUBLIC LAND SURVEY CORNER CERTIFICATE

LAND SURVEY MONUMENTS SITUATED IN SECTION 15, TOWNSHIP 83
NORTH, RANGE 4 WEST OF THE 5TH P.M., JONES COUNTY, IOWA

CORNERS TO BE INDEXED

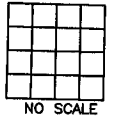
CORNER NORTHEAST	SECTION 15	TOWNSHIP 83N	RANGE 4W	 NO SCALE
OFFICE FILE NO. <u>1936 INFORMATION</u>				

83415e_081103.jpg



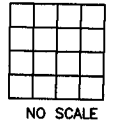
ENGINEER'S CORNER STONE BOOK
PREVIOUSLY RECORDED IN BOOK #6, PAGE 45
MONUMENT DESCRIPTION AND HOW ESTABLISHED FOUND 2-LIMESTONES
ON END 3' BELOW SURFACE ON WEST SHOULDER OF COUNTY ROAD. LOWERED BOTH
STONES AND SET STANDARD CONCRETE MONUMENT DIRECTLY ABOVE. TIES AS
INDICATED. NORTHEAST CORNER SECTION 15, TOWNSHIP 83 NORTH, RANGE 4 WEST
OF THE 5TH PM, JONES COUNTY, IOWA.

CORNERS TO BE INDEXED

CORNER	SECTION	TOWNSHIP	RANGE	 NO SCALE
OFFICE FILE NO. _____				

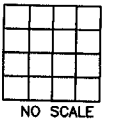
PREVIOUSLY RECORDED IN BOOK _____, PAGE _____
MONUMENT DESCRIPTION AND HOW ESTABLISHED _____

CORNERS TO BE INDEXED

CORNER	SECTION	TOWNSHIP	RANGE	 NO SCALE
OFFICE FILE NO. _____				

PREVIOUSLY RECORDED IN BOOK _____, PAGE _____
MONUMENT DESCRIPTION AND HOW ESTABLISHED _____

CORNERS TO BE INDEXED

CORNER	SECTION	TOWNSHIP	RANGE	 NO SCALE
OFFICE FILE NO. _____				

PREVIOUSLY RECORDED IN BOOK _____, PAGE _____
MONUMENT DESCRIPTION AND HOW ESTABLISHED _____

~~I hereby declare that this plat, survey or report was made by me or under my direct personal supervision and that I am a duly registered Land Surveyor under the laws of the State of Iowa.~~

Signed: _____

SEAL

JONES COUNTY
ENGINEER'S OFFICE

19501 HWY. 64,
ANAMOSA, IOWA,
52205 (319)462-3785

k