

UNITED STATES PUBLIC LAND SURVEY CORNER CERTIFICATE

LAND SURVEY MONUMENTS SITUATED IN SECTION 17, TOWNSHIP 83 N,
RANGE 4 W, OF THE 5th. PRINCIPAL MERIDIAN, JONES
COUNTY, IOWA.

N NO SCALE

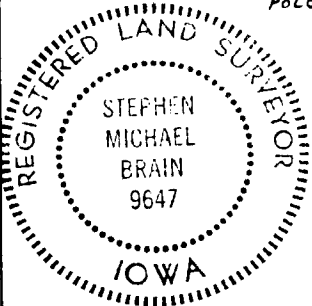
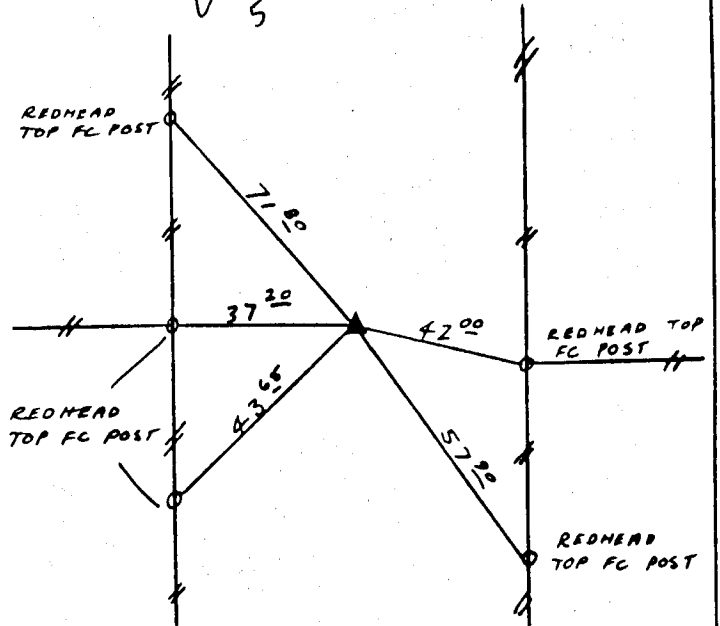
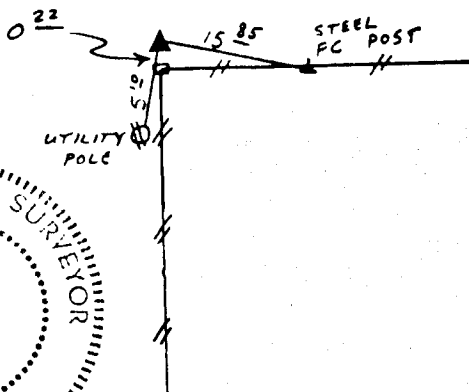
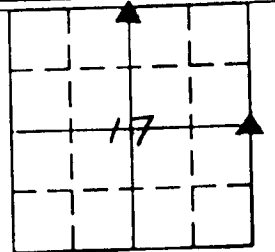
RECOVERY TIE DRAWING

N 1/4 17-83-4W

E 1/4 17-83-4W

*ON
Card
5-16-91*

*ON
Card
5-16-91*



PREVIOUSLY RECORDED IN BOOK _____ PAGE _____
MONUMENT DESCRIPTION AND HOW ESTABLISHED: _____
FOUND S.C.M.

PREVIOUSLY RECORDED IN BOOK _____ PAGE _____
MONUMENT DESCRIPTION AND HOW ESTABLISHED: _____
ESTABLISHED BY TIES

I HEREBY DECLARE THAT THE SURVEY WORK WAS COMPLETED AND THIS CERTIFICATE WAS PREPARED BY ME OR UNDER MY DIRECT PERSONAL SUPERVISION AND THAT I AM A DULY REGISTERED LAND SURVEYOR UNDER THE LAWS OF THE STATE OF IOWA.

Stephen Michael Brain 5/16/91
STEPHEN MICHAEL BRAIN, P.E. & L.S. 9647

List Corners to be Indexed

Corners	Section	Twp	Range
S 1/4	8	83 N	4 W
W 1/4	16	83 N	4 W

PERMENT ENGINEERING, INC.
HIAWATHA, IOWA

SECTION CORNER CERTIFICATE

OF
 LAND SURVEY MONUMENTS SITUATED IN SECTION 17, TOWNSHIP 83 NORTH,
 RANGE 4 WEST, OF THE FIFTH PRINCIPAL MERIDIAN, Jones, COUNTY, IOWA.

PREVIOUSLY RECORDED IN BOOK _____ AT PAGE _____

FOR RECORDER'S USE

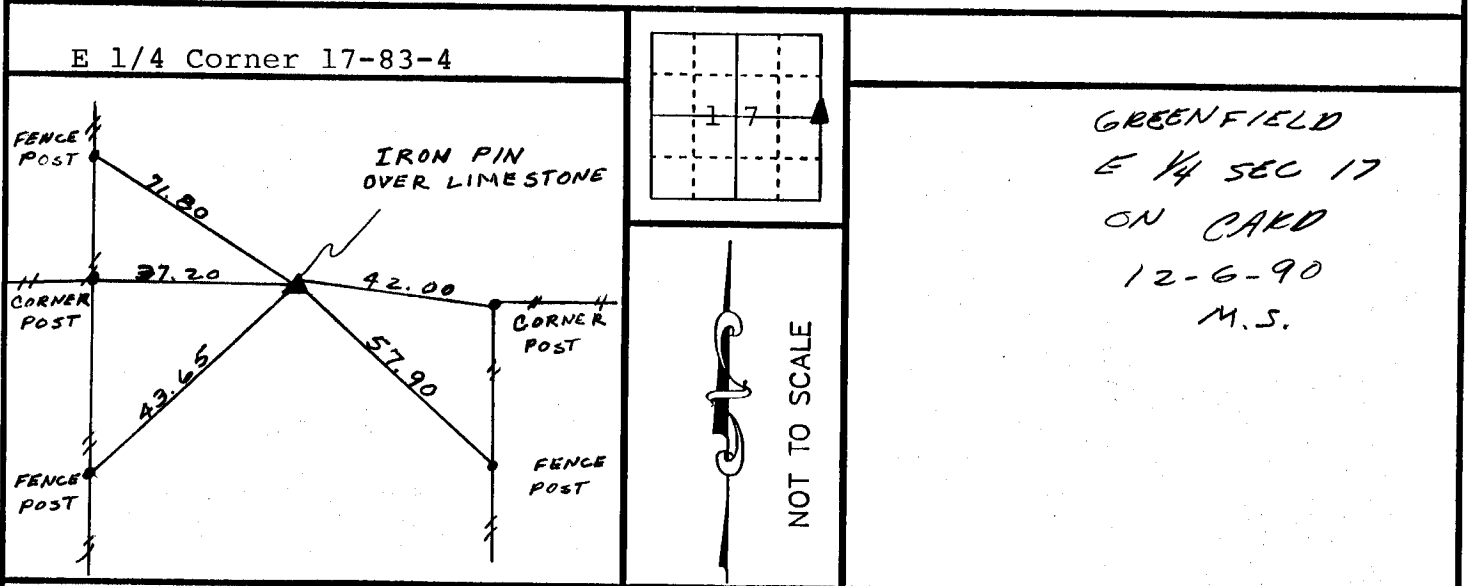
REASON FOR PREPARING CERTIFICATE:

- A) THERE IS NO CERTIFICATE FOR THE CORNER ON FILE WITH THE RECORDER OF THE COUNTY IN WHICH THE CORNER IS LOCATED.
- B) CORNER POSITION DIFFERS FROM THAT SHOWN IN THE PUBLIC RECORDS OF THE COUNTY IN WHICH THE CORNER IS LOCATED.
- C) THE CORNER MONUMENT HAS BEEN REPLACED OR MODIFIED.
- D) THE REFERENCE TIES REFERRED TO IN AN EXISTING PUBLIC RECORD ARE INCORRECT.

MONUMENT DESCRIPTION AND REMARKS :

Dug and found a limestone 6"x6"x1' buried 3.5 ft. below road surface
 Set 5/8"x24" Iron Pin on top of stone 1.5 ft. below surface stone on
 line with fence West and 7 ft. North of fence East near Center of road.

RECOVERY TIE DRAWING



I, GLEN D. MEISNER, CERTIFY THAT THE CORNER LOCATION(S) SHOWN ON THIS RECORD WERE DETERMINED BY ME OR UNDER MY DIRECTION AND CONTROL AND THAT THIS U.S. PUBLIC LAND SURVEY MONUMENT RECORD IS CORRECT AND COMPLETE TO THE BEST OF MY KNOWLEDGE AND BELIEF.



Glen D. Meisner 11-12-90
 GLEN D. MEISNER L.S. NO 8165 DATE

<p>LEGEND</p> <ul style="list-style-type: none"> ▲ GOVERNMENT CORNER ○ 5/8" TIE PIN SET — CENTERLINE - - - EXISTING FENCE LINE --- R.O.W. LINE 	<p>SHEET TITLE: U.S. PUBLIC LAND SURVEY RECORD</p> <p>PROJECT TITLE:</p>	<p>HALL AND HALL ENGINEERS, INC. 226 29TH STREET DRIVE S.E. CEDAR RAPIDS, IOWA 52403 319-362-9548</p>				
DW	DTE	APP	DATE	SCALE	F NO	P NO

834170-111290