

2000 1980

FILED
RECORDERS OFFICE
JONES COUNTY IOWA

00 JUN 26 AM 10:40

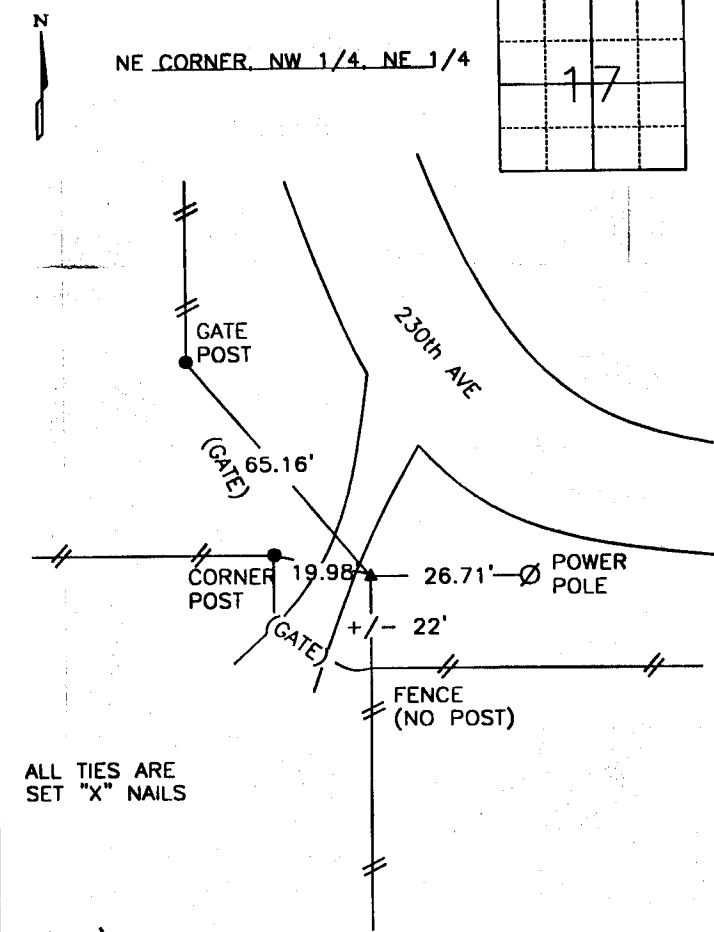
MARIE KRUTZFIELD
RECORDER 6.00 pd

STEPHEN MICHAEL BRAIN, BRAIN ENGINEERING, INC., 777 10TH STREET, MARION, IOWA 52302 PH. (319) 373-1318

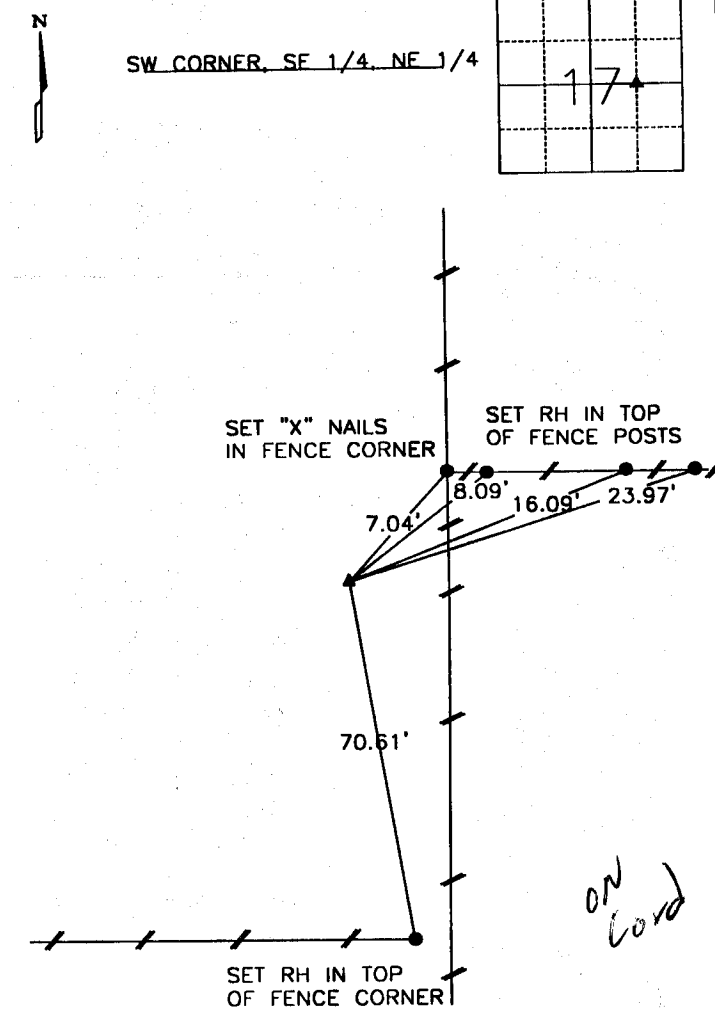
UNITED STATES PUBLIC LAND SURVEY CORNER CERTIFICATE

LAND SURVEY MONUMENTS SITUATED IN SECTION 17, TOWNSHIP 83 NORTH
RANGE 4 WEST OF THE 5TH P.M., _____ JONES _____ COUNTY, IOWA.

NO SCALE



NO SCALE



PREVIOUSLY RECORDED IN BOOK _____ PAGE _____

MONUMENT DESCRIPTION AND HOW ESTABLISHED _____

SET 1/2" REBAR WITH YELLOW CAP #9647

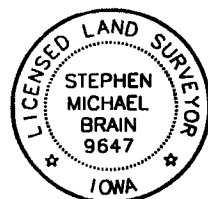
PROPORTION METHOD - NO TIES ON RECORD

PREVIOUSLY RECORDED IN BOOK _____ PAGE _____

MONUMENT DESCRIPTION AND HOW ESTABLISHED _____

SET 1/2" REBAR WITH YELLOW CAP #9647

PROPORTION METHOD - NO TIES ON RECORD



I hereby certify that this land surveying document and the related survey work was performed by me or under my direct personal supervision and that I am a duly licensed Land Surveyor under the laws of the State of Iowa.

Signed: *Stephen Michael Brain* Date: 6/24/00

Stephen Michael Brain, L.S.
My License Renewal Date is December 31, 2000
License Number 9647
Pages or sheets covered by this seal: 1/1

CORNERS TO BE INDEXED

CORNER	SECTION	TOWNSHIP	RANGE
NE NW 1/4, NE 1/4	17	T83N	R4W
SW SE 1/4, NE 1/4	17	T83N	R4W

BRAIN ENGINEERING, INC.

777 10TH STREET
MARION, IOWA 52302
(319) 373-1318