

2005 3157

FILED  
RECORDERS OFFICE  
JONES COUNTY IOWA

05 SEP -6 PM 12:26

MARIE KRUTZFIELD  
RECORDER 7.00Pd

SLSI 9-90

Prepared By: Leo D. Wooder, L.S. #14676 Anderson-Bogert Engineers & Surveyors, Inc.  
4001 River Ridge Dr. N.E. Cedar Rapids, Iowa 52402 Phone: (319) 377-4629

UNITED STATES PUBLIC LAND SURVEY CORNER CERTIFICATE  
OF

Land Survey Monuments situated in Section 7, Township 83N, Range 4W, of the Fifth Principal Meridian, Jones County, Iowa.  
Previously recorded in \_\_\_\_\_ Not Previously Recorded \_\_\_\_\_ in County Recorders Office.  
(book, page, document number, ect.)

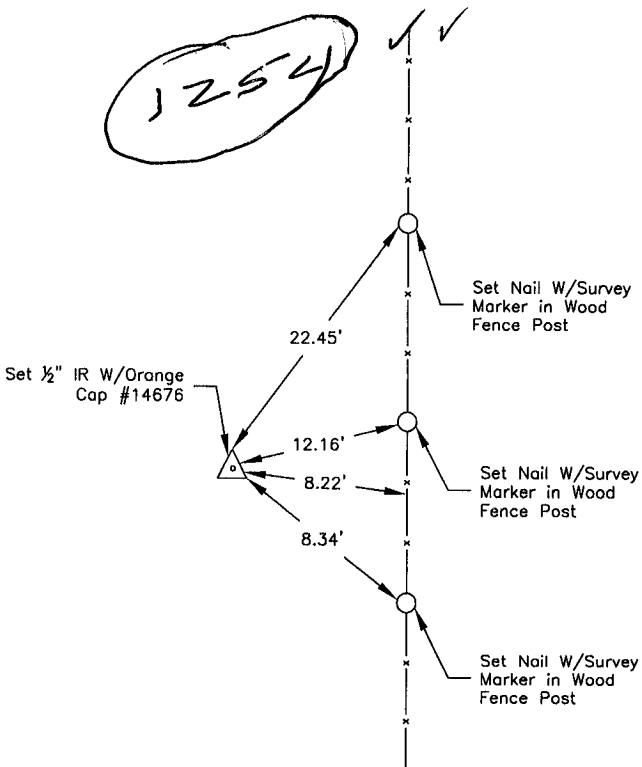
(Show reason for preparing this certificate, the evidence and detailed procedures used in establishing the corner positions and monumentation found or placed.)

Monument Description and Remarks: Center Sec 7 Set 1/2" Iron Rod W/Orange Cap #14676 on Line Between E 1/4 Cor 7 + W 1/4 Cor 7 and on Fence Line to South. S 1/4 Cor 7, Set 1/2" Iron Rod W/Orange Cap #14676 on Line Between SW Cor 7 + SE Cor 7 Approximately 8.6' West of Line of Old Fence North and South (Ties from WPA Survey 1936+1937). Corners were Set for Survey Recorded as Instrument #20053039 in the Jones County Recorders Office.

PLAN - VIEW

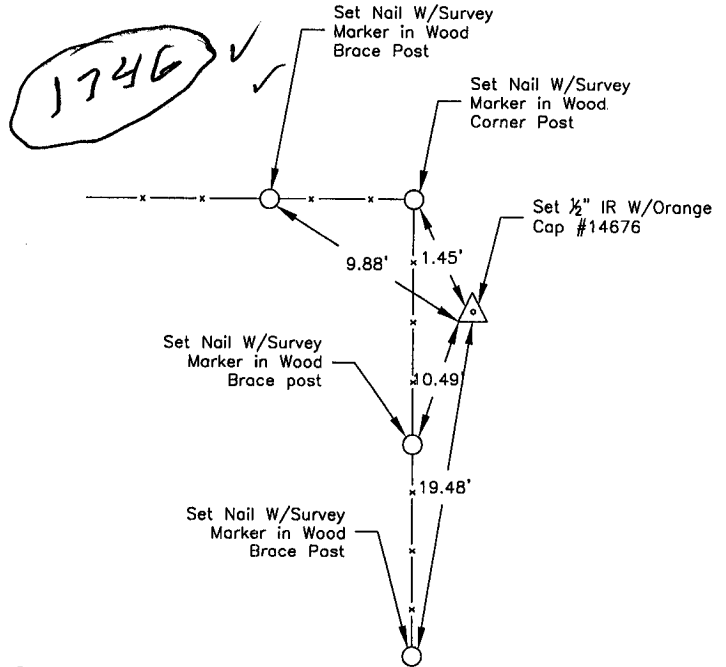
(Show a minimum of three reference ties to durable physical objects, relevant monuments and physical conditions that will enable recovery of the corner.)

8341Bc-091905.tie



S1/4 Cor Sec 7-83-4

83407m-091905.tie



Center Sec 7-83-4

I hereby certify that this land surveying document was prepared and the related survey work was performed by me or under my direct personal supervision and that I am a duly licensed Land Surveyor under the laws of the State of Iowa

Signature: \_\_\_\_\_ Date: 7/16/2005

List Corners to be Indexed

Corners	Section	Twp	Range
SK Cor	7	83	4

# THIS IS NOT A CERTIFICATION

JONES COUNTY ENGINEER'S OFFICE, 19501 HWY. 64, ANAMOSA, IOWA, 52205 (319)462-3785

## UNITED STATES PUBLIC LAND SURVEY CORNER CERTIFICATE

LAND SURVEY MONUMENTS SITUATED IN SECTION 18, TOWNSHIP 83  
NORTH, RANGE 4 WEST OF THE 5TH P.M., JONES COUNTY, IOWA

CORNERS TO BE INDEXED

CORNER NORTHWEST	SECTION 18	TOWNSHIP 83N	RANGE 4W
---------------------	---------------	-----------------	-------------

OFFICE FILE NO. \_\_\_\_\_  
83418a\_081103.jpg

1253

ROADWAY

LINN COUNTY ENGINEER  
INFORMAMTION.

PREVIOUSLY RECORDED IN BOOK \_\_\_\_\_, PAGE \_\_\_\_\_  
MONUMENT DESCRIPTION AND HOW ESTABLISHED FD. 18"X8"X3"  
BROKEN LIMESTONE 30' BELOW SURFACE ON NORTH ROAD SLOPE.  
FD. STAKE OVER STONE. LOWERED STONE TO 4' BELOW, SET STANDARD  
CONCRETE DIRECTLY ABOVE. TOP FLUSH WITH GROUND. NORTHWEST  
CORNER SECTION 18, TOWNSHIP 83 NORTH, RANGE 4 WEST OF 5TH  
PM, JONESS COUNTY, IOWA.

CORNERS TO BE INDEXED

CORNER N-1/4	SECTION 18	TOWNSHIP 83N	RANGE 4W
-----------------	---------------	-----------------	-------------

OFFICE FILE NO. \_\_\_\_\_  
83418c\_081103.jpg

1254

ENGINEER'S CORNER STONE BOOK

PREVIOUSLY RECORDED IN BOOK #6, PAGE 52  
MONUMENT DESCRIPTION AND HOW ESTABLISHED FOUND 18"X8"X6"  
LIMESTONE STANDING ON END. LOWERED STONE AND SET STANDARD  
CONCRETE DIRECTLY ABOVE. TIES AS INDICATED. NORTH QUARTER  
CORNER SECTION 18, TOWNSHIP 83 NORTH, RANGE 4 WEST OF THE  
5TH PM, JONES COUNTY, IOWA.

CORNERS TO BE INDEXED

CORNER	SECTION	TOWNSHIP	RANGE
--------	---------	----------	-------

OFFICE FILE NO. \_\_\_\_\_

PREVIOUSLY RECORDED IN BOOK \_\_\_\_\_, PAGE \_\_\_\_\_  
MONUMENT DESCRIPTION AND HOW ESTABLISHED \_\_\_\_\_  
\_\_\_\_\_  
\_\_\_\_\_

CORNERS TO BE INDEXED

CORNER	SECTION	TOWNSHIP	RANGE
--------	---------	----------	-------

OFFICE FILE NO. \_\_\_\_\_

PREVIOUSLY RECORDED IN BOOK \_\_\_\_\_, PAGE \_\_\_\_\_  
MONUMENT DESCRIPTION AND HOW ESTABLISHED \_\_\_\_\_  
\_\_\_\_\_  
\_\_\_\_\_

~~I hereby declare that this plat, survey or report was made by me or under my direct personal supervision and that I am a duly registered Land Surveyor under the laws of the State of Iowa.~~

Signed: \_\_\_\_\_

SEAL

JONES COUNTY  
ENGINEER'S OFFICE

19501 HWY. 64,  
ANAMOSA, IOWA,  
52205 (319)462-3785