

FILED
RECORDERS OFFICE
JONES COUNTY IOWA

05 JAN 19 PM 1:09

MARIE KRUTZFIELD
RECORDER *No Fee*

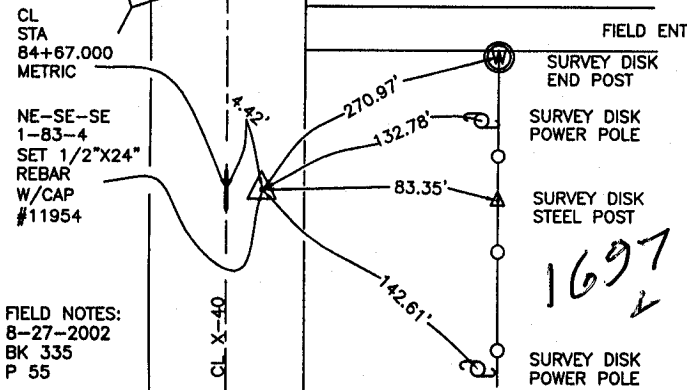
J.D. TJEPKES, LS. JONES COUNTY ENGINEER'S OFFICE, 19501 HWY. 64, ANAMOSA, IOWA, 52205 (319)462-3785

UNITED STATES PUBLIC LAND SURVEY CORNER CERTIFICATE

LAND SURVEY MONUMENTS SITUATED IN SECTION 1, TOWNSHIP 83
NORTH, RANGE 4 WEST OF THE 5TH P.M., JONES COUNTY, IOWA

CORNERS TO BE INDEXED

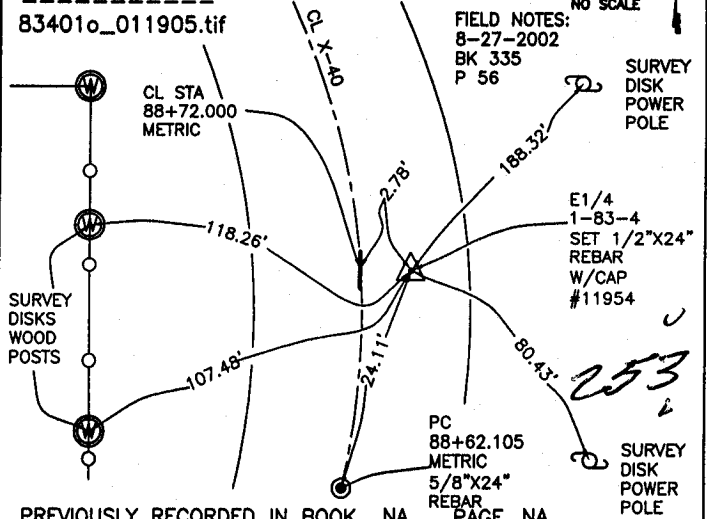
CORNER SECTION TOWNSHIP RANGE
NE-SE-SE 1 83N 4W
OFFICE FILE NO.
83401t_011905.tif



PREVIOUSLY RECORDED IN BOOK NA, PAGE NA
MONUMENT DESCRIPTION AND HOW ESTABLISHED _____
NOTE: HALL & HALL MARKED LOCATION IN CONJUNCTION WITH
JONES CO. PROJECT NO. CO-53(38)--55-53. SET 1/2"x24"
REBAR W/CAP #11954. RETIED AS INDICATED NE-SE-SE
SECTION 1 T83N R4W.

CORNERS TO BE INDEXED

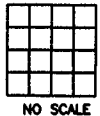
CORNER SECTION TOWNSHIP RANGE
E1/4 1 83N 4W
OFFICE FILE NO.
83401o_011905.tif



PREVIOUSLY RECORDED IN BOOK NA, PAGE NA
MONUMENT DESCRIPTION AND HOW ESTABLISHED _____
NOTE: HALL & HALL MARKED LOCATION IN CONJUNCTION WITH
JONES CO. PROJECT NO. CO-53(38)--55-53. SET 1/2"x24"
REBAR W/CAP #11954. RETIED AS INDICATED E1/4 SECTION 1
T83N R4W.

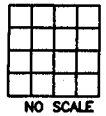
CORNERS TO BE INDEXED

CORNER SECTION TOWNSHIP RANGE
OFFICE FILE NO.



CORNERS TO BE INDEXED

CORNER SECTION TOWNSHIP RANGE
OFFICE FILE NO.



PREVIOUSLY RECORDED IN BOOK _____, PAGE _____
MONUMENT DESCRIPTION AND HOW ESTABLISHED _____

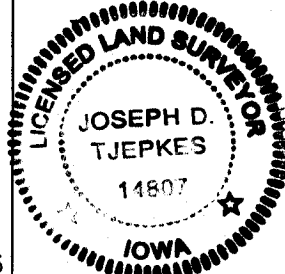
PREVIOUSLY RECORDED IN BOOK _____, PAGE _____
MONUMENT DESCRIPTION AND HOW ESTABLISHED _____

I hereby declare that this plat, survey or report was made by me or under my direct personal supervision and that I am a duly registered Land Surveyor under the laws of the State of Iowa.

Signed [Signature] 1-19-05

Joseph D. Tjepkes L.S. Iowa Reg. No. 14807
My Registration Renewal Date is December 31, 2006

SEAL



J.D. TJEPKES LS 14807
JONES COUNTY
ENGINEER'S OFFICE

19501 HWY. 64,
ANAMOSA, IOWA,
52205 (319)462-3785

A

UNITED STATES PUBLIC LAND SURVEY CORNER CERTIFICATE OF

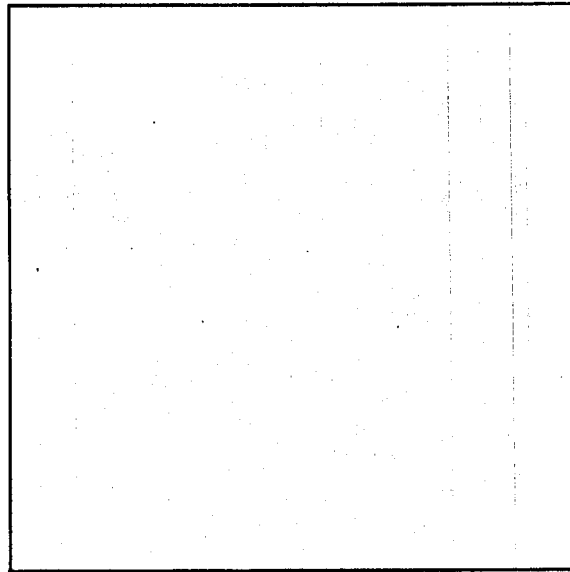
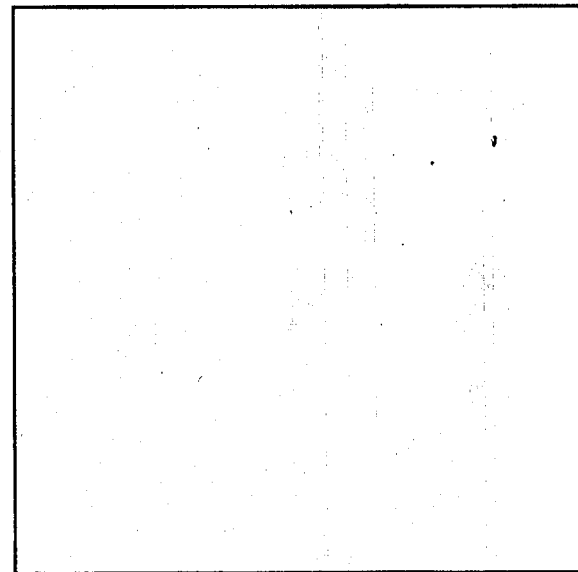
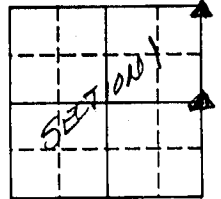
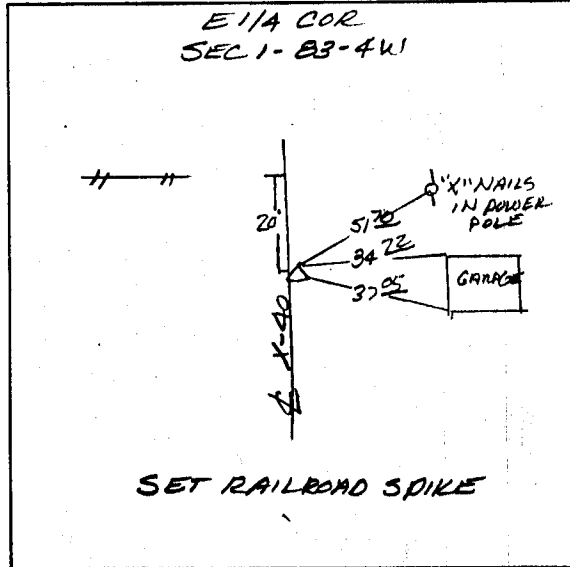
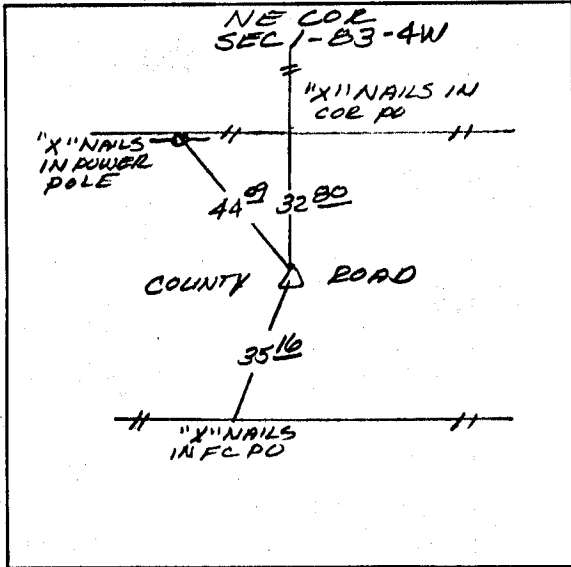
LAND SURVEY MONUMENTS SITUATED IN SECTION 1, TOWNSHIP 83 NORTH, RANGE 4 WEST, OF THE 5TH PRINCIPAL MERIDIAN JONES COUNTY IOWA.
PREVIOUSLY RECORDED IN BOOK 319 PAGE 39 IN COUNTY RECORDER'S OFFICE.
(book, page, document number, etc.)

(Show reason for preparing this certificate, the evidence and detailed procedures used in establishing the corner positions and monumentation found or placed.)

MONUMENT DESCRIPTION AND REMARKS: USED SAME CORNERS THAT I ESTABLISHED FOR A SURVEY IN ADJOINING SECTION 6-83-3W

PLAN - VIEW

(Show a minimum of three reference ties to durable physical objects, relevant monuments and physical conditions that will enable recovery of the corner.)



I hereby certify that the survey work was completed and this certificate was prepared by me or under my direct personal supervision and that I am a duly registered land surveyor under the laws of the state of Iowa. My registration expires December 31, 1992.

Signature: Larry R. McGuire

LARRY R. MCGUIRE

Date: 7/21/92 Reg. No. 9019

LAND CORNERS TO BE RECORDED			
Corners	Section	Twp:	Range
NE COR	1	83	4W
E1/4 COR	1	83	4W

83401e-072192
83401o-072192



UNITED STATES PUBLIC LAND SURVEY CORNER CERTIFICATE OF

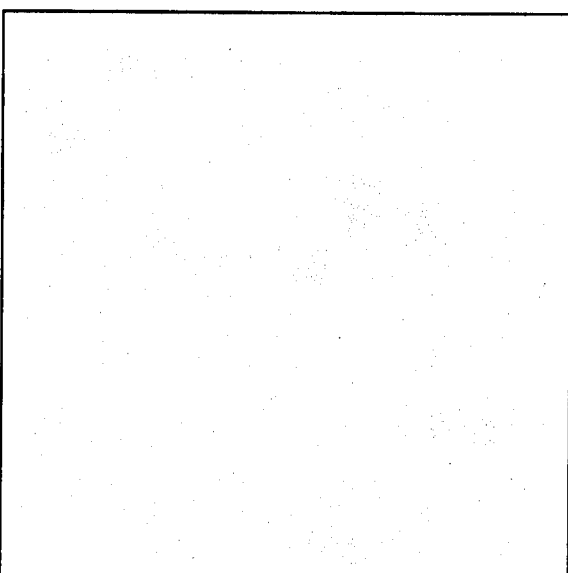
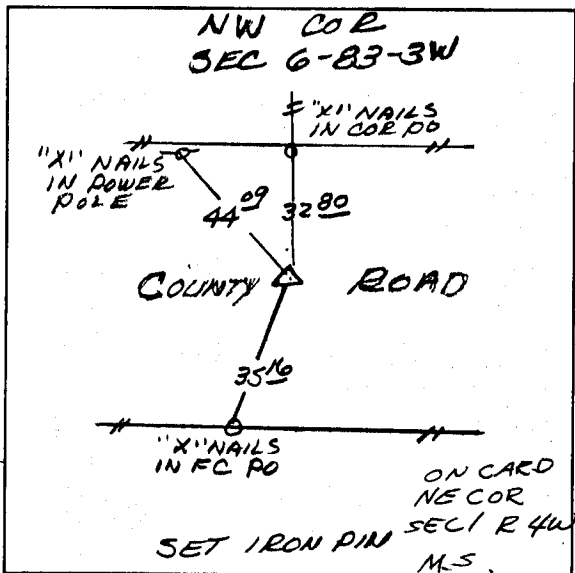
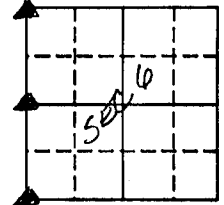
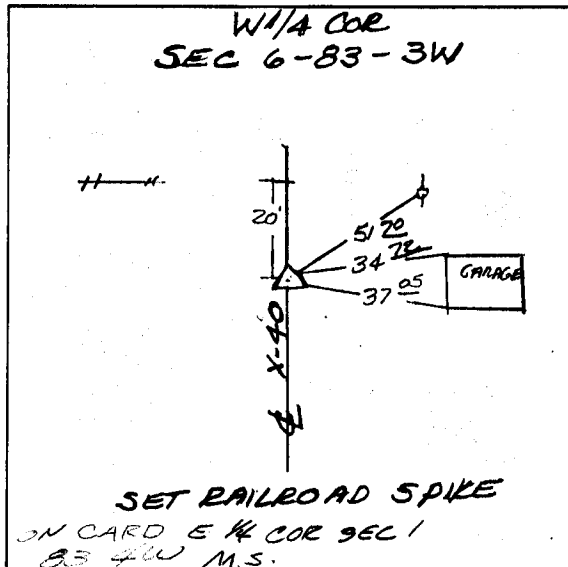
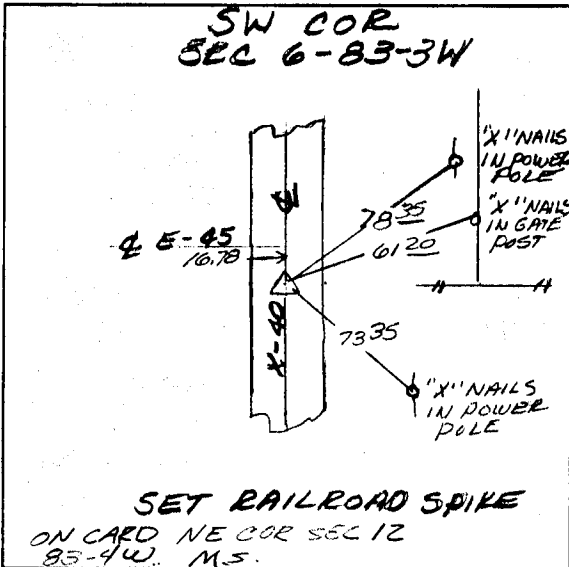
LAND SURVEY MONUMENTS SITUATED IN SECTION 6, TOWNSHIP 83 NORTH, RANGE 3 WEST, OF THE 5TH PRINCIPAL MERIDIAN JONES COUNTY IOWA.
PREVIOUSLY RECORDED IN DOES NOT APPLY IN COUNTY RECORDER'S OFFICE.
(book, page, document number, etc.)

(Show reason for preparing this certificate, the evidence and detailed procedures used in establishing the corner positions and monumentation found or placed.)

MONUMENT DESCRIPTION AND REMARKS: RE-ESTABLISHED SW COR FROM DON BUNTING SURVEY IN THE SE 1/4 SEC 1-83-4W, RE-ESTABLISHED W 1/4 COR BY MEASURING MILE AND USING EVIDENCE OF OLD ROAD TO THE WEST. SEARCHED FOR CONC MONU AT NW COR DID NOT FIND SET IRON PIN USING COUNTY TIES AND EVIDENCE

PLAN - VIEW

(Show a minimum of three reference ties to durable physical objects, relevant monuments and physical conditions that will enable recovery of the corner.)



I hereby certify that the survey work was completed and this certificate was prepared by me or under my direct personal supervision and that I am a duly registered land surveyor under the laws of the state of Iowa. My registration expires December 31, 1992

Signature: Larry R. McGuire
LARRY R. MCGUIRE

Date: 5/7/92 Reg. No. 9019

LAND CORNERS TO BE RECORDED

Corners	Section	Twp.	Range
SW COR	6	83	3W
W 1/4 COR	6	83	3W
NW COR	6	83	3W

