

FILED
RECORDERS OFFICE
JONES COUNTY IOWA

05 JAN 19 PM 1:09

MARIE KRUTZFIELD
RECORDER *No Fee*

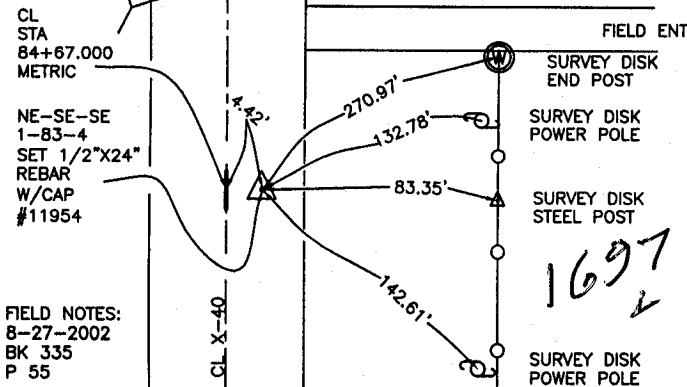
J.D. TJEPKES, LS. JONES COUNTY ENGINEER'S OFFICE, 19501 HWY. 64, ANAMOSA, IOWA, 52205 (319)462-3785

UNITED STATES PUBLIC LAND SURVEY CORNER CERTIFICATE

LAND SURVEY MONUMENTS SITUATED IN SECTION 1, TOWNSHIP 83
NORTH, RANGE 4 WEST OF THE 5TH P.M., JONES COUNTY, IOWA

CORNERS TO BE INDEXED

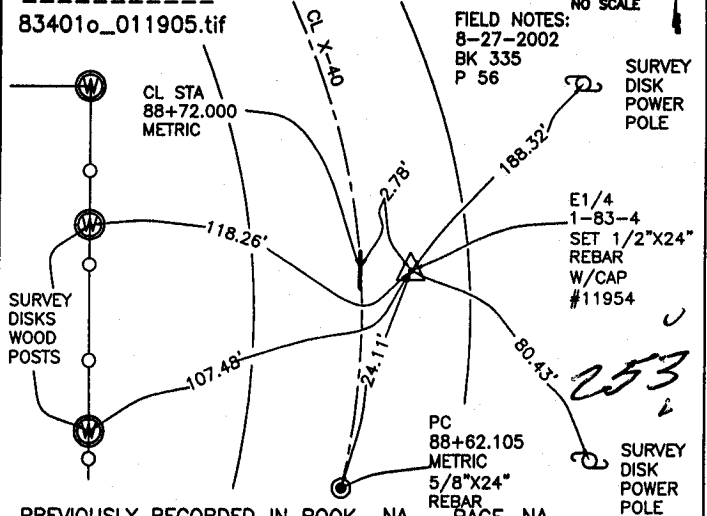
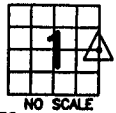
CORNER SECTION TOWNSHIP RANGE
NE-SE-SE 1 83N 4W
OFFICE FILE NO.
83401t_011905.tif



PREVIOUSLY RECORDED IN BOOK NA, PAGE NA
MONUMENT DESCRIPTION AND HOW ESTABLISHED
NOTE: HALL & HALL MARKED LOCATION IN CONJUNCTION WITH
JONES CO. PROJECT NO. CO-53(38)--55-53. SET 1/2"x24"
REBAR W/CAP #11954. RETIED AS INDICATED NE-SE-SE
SECTION 1 T83N R4W.

CORNERS TO BE INDEXED

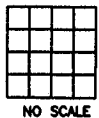
CORNER SECTION TOWNSHIP RANGE
E1/4 1 83N 4W
OFFICE FILE NO.
83401o_011905.tif



PREVIOUSLY RECORDED IN BOOK NA, PAGE NA
MONUMENT DESCRIPTION AND HOW ESTABLISHED
NOTE: HALL & HALL MARKED LOCATION IN CONJUNCTION WITH
JONES CO. PROJECT NO. CO-53(38)--55-53. SET 1/2"x24"
REBAR W/CAP #11954. RETIED AS INDICATED E1/4 SECTION 1
T83N R4W.

CORNERS TO BE INDEXED

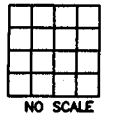
CORNER SECTION TOWNSHIP RANGE
OFFICE FILE NO.



PREVIOUSLY RECORDED IN BOOK _____, PAGE _____
MONUMENT DESCRIPTION AND HOW ESTABLISHED _____

CORNERS TO BE INDEXED

CORNER SECTION TOWNSHIP RANGE
OFFICE FILE NO.



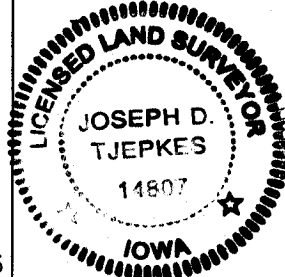
PREVIOUSLY RECORDED IN BOOK _____, PAGE _____
MONUMENT DESCRIPTION AND HOW ESTABLISHED _____

I hereby declare that this plat, survey or report was made by me or under my direct personal supervision and that I am a duly registered Land Surveyor under the laws of the State of Iowa.

Signed  1-19-05

Joseph D. Tjepkes L.S. Iowa Reg. No. 14807
My Registration Renewal Date is December 31, 2006

SEAL



J.D. TJEPKES LS 14807
JONES COUNTY
ENGINEER'S OFFICE

19501 HWY. 64,
ANAMOSA, IOWA,
52205 (319)462-3785

A