

RECEIVED

AUG 16 1996

JONES COUNTY ENGINEER

BRAIN ENGINEERING, INC., 777 10TH STREET, MARION, IOWA 52302 PH. (319) 373-1318

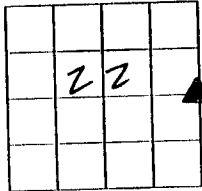
# UNITED STATES PUBLIC LAND SURVEY CORNER CERTIFICATE

LAND SURVEY MONUMENTS SITUATED IN SECTION 22, TOWNSHIP 83 NORTH RANGE 4 WEST OF THE 5TH P.M., JONES COUNTY, IOWA.

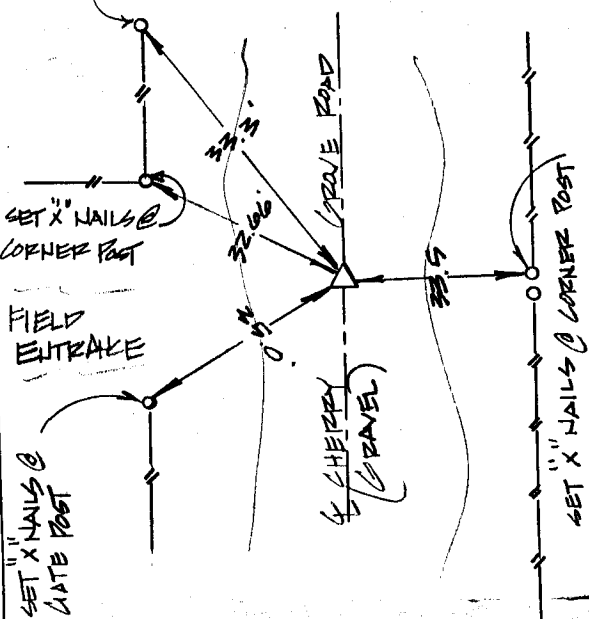
NO SCALE

N

E 1/4 CORNER



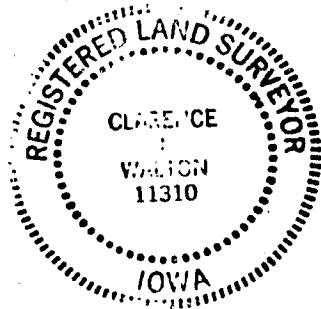
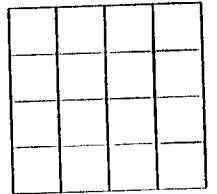
SET "X" NAILS @ BRACE POST



ON  
COND

NO SCALE

N



PREVIOUSLY RECORDED IN BOOK \_\_\_\_\_ PAGE \_\_\_\_\_

MONUMENT DESCRIPTION AND HOW ESTABLISHED FOUND 1/2"

PEBBLE @ THE E 1/4 CORNER OF SEC. 22-TWN. 83-  
RANGE 4TH P.M.

PREVIOUSLY RECORDED IN BOOK \_\_\_\_\_ PAGE \_\_\_\_\_

MONUMENT DESCRIPTION AND HOW ESTABLISHED \_\_\_\_\_

834220-073196

I hereby declare that this plat, survey or report was made by me or under my direct personal supervision and that I am a duly registered Land Surveyor under the laws of the State of Iowa.

Signed Clarence J. Walton Date 7/31/96  
Clarence J. Walton L.S. Iowa Reg No. 11310  
My Registration Renewal Date Is December 31, 1997

CORNERS TO BE INDEXED

CORNER SECTION TOWNSHIP RANGE  
E 1/4 22 83 4

**BRAIN ENGINEERING, INC.**

777 10TH STREET  
MARION, IOWA 52302  
(319) 373-1318

183 6.10