

COPY

Jones County, Iowa
 Marie Krutzfield, Recorder
 Fee Book 2010 3497
 12/14/2010 @1120AM
 ZSC SEC COR CERT # Pages: 1
 Book: Page: \$0.00
 Total Fees:

PREPARED BY
 CLARENCE J. WALTON, JONES COUNTY ENGINEER'S OFFICE, 19501 HWY. 64, ANAMOSA, IOWA, 52205 (319) 462-3785

UNITED STATES PUBLIC LAND SURVEY CORNER CERTIFICATE

LAND SURVEY MONUMENTS SITUATED IN SECTION 23, TOWNSHIP 83 NORTH,
 RANGE 4 WEST OF THE 5TH PRINCIPAL MERIDIAN, JONES COUNTY, IOWA.

PROJECT: M-1511

STATE PLANE COORDINATE
 NAD 83 IOWA NORTH
 N 3465119.64
 E 5525227.81

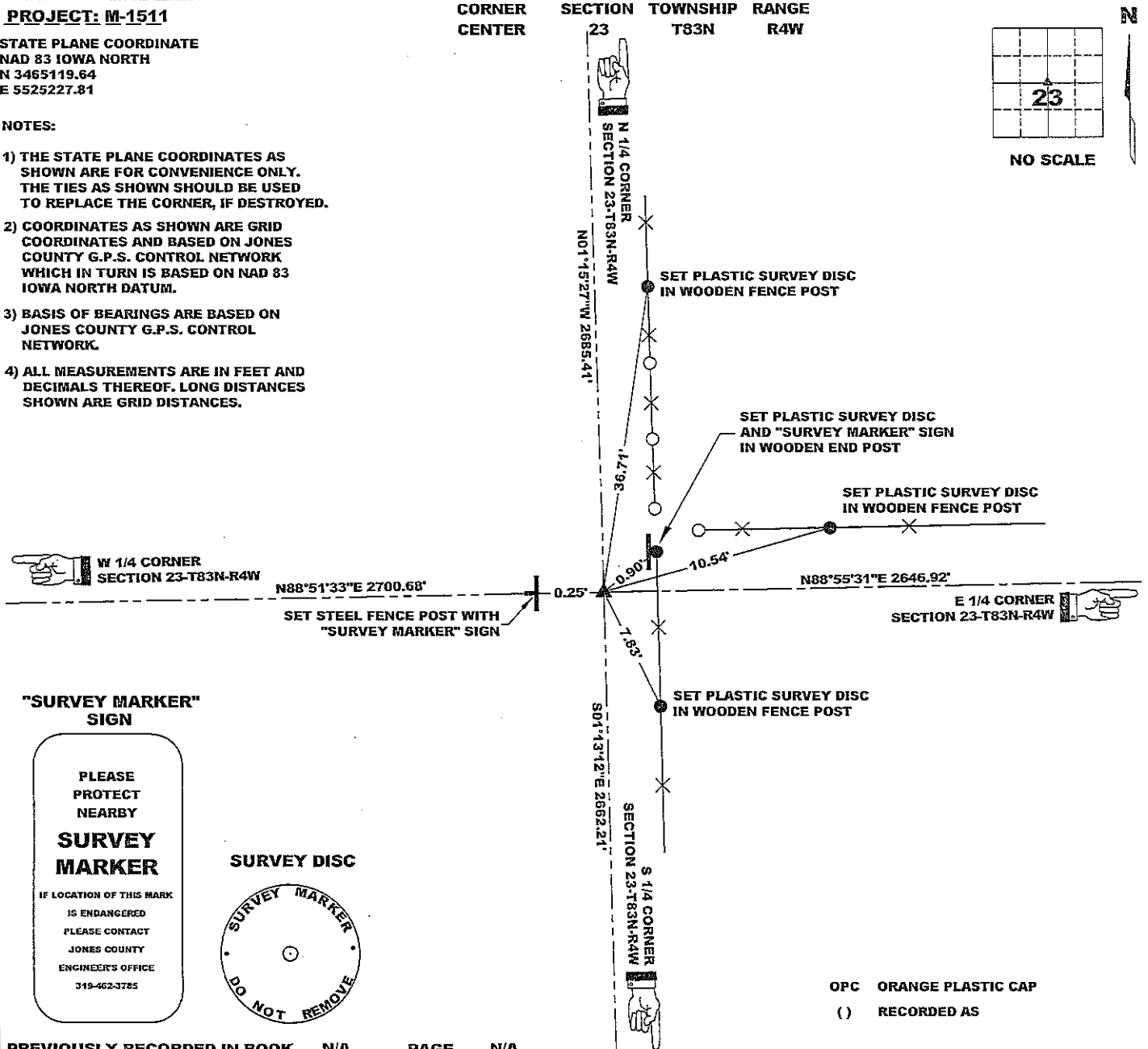
NOTES:

- 1) THE STATE PLANE COORDINATES AS SHOWN ARE FOR CONVENIENCE ONLY. THE TIES AS SHOWN SHOULD BE USED TO REPLACE THE CORNER, IF DESTROYED.
- 2) COORDINATES AS SHOWN ARE GRID COORDINATES AND BASED ON JONES COUNTY G.P.S. CONTROL NETWORK WHICH IN TURN IS BASED ON NAD 83 IOWA NORTH DATUM.
- 3) BASIS OF BEARINGS ARE BASED ON JONES COUNTY G.P.S. CONTROL NETWORK.
- 4) ALL MEASUREMENTS ARE IN FEET AND DECIMALS THEREOF. LONG DISTANCES SHOWN ARE GRID DISTANCES.

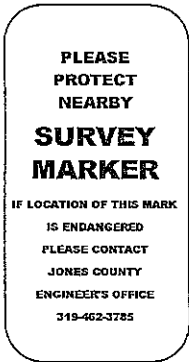
CORNER SECTION TOWNSHIP RANGE
 CENTER 23 T83N R4W



NO SCALE



"SURVEY MARKER" SIGN



SURVEY DISC



OPC ORANGE PLASTIC CAP
 () RECORDED AS

PREVIOUSLY RECORDED IN BOOK N/A, PAGE N/A

MONUMENT DESCRIPTION AND HOW ESTABLISHED PROBED AROUND OLD END POSTS. FOUND ONLY ONE STONE. STONE WAS YELLOW GRANITE APPROXIMATELY 12" LENGTH X 9" WIDTH X 7" DEPTH 36" BELOW PRESENT GROUND SURFACE. SET 5/8"X48" REBAR WITH ORANGE PLASTIC CAP #11310 12" ABOVE PRESENT GROUND SURFACE DIRECTLY ATOP STONE. SET STEEL FENCE POST WITH "SURVEY MARKER" SIGN AS A WITNESS AND FOR PROTECTION. ALSO SET "SURVEY MARKER" SIGN ON WEST SIDE OF END POST OF FENCE TO SOUTH AS A WITNESS. AS A POINT OF INTEREST, THE STONE IS N28°22'23"E 1.77' FROM THE INTERSECTION OF OPPOSITE QUARTER CORNERS.

FIELD BOOK MISC. 2009-2010, PAGE 139. DATE OF SURVEY: 11/19/10



I hereby certify that this land surveying document and the related survey work was performed by me or under my direct personal supervision and that I am a duly registered Land Surveyor under the laws of the State of Iowa.
 Signed: *Clarence J. Walton* 12/9/10
 Clarence J. Walton, L.S.
 My Registration Renewal Date is December 31, 2011
 Iowa License Number 11310
 Pages or sheets covered by this seal: 1 of 1.

- A. THERE IS NO CERTIFICATE FOR THE CORNER ON FILE WITH THE RECORDER OF THE COUNTY IN WHICH THE CORNER IS LOCATED.
- B. THE CORNER MONUMENT HAS BEEN REPLACED OR MODIFIED.
- C. THE SURVEYOR IN RESPONSIBLE CHARGE OF THE LAND SURVEYING ACCEPTS A CORNER POSITION THAT DIFFERS FROM THAT SHOWN IN THE PUBLIC RECORDS OF THE COUNTY IN WHICH THE CORNER IS LOCATED.
- D. THE REFERENCE TIES REFERRED TO IN AN EXISTING PUBLIC RECORD NO LONGER EXIST.

CORNERS TO BE INDEXED

CORNER	SECTION	TOWNSHIP	RANGE
CENTER	23	83N	4W

JONES COUNTY ENGINEER'S OFFICE



19501 HWY. 64, ANAMOSA, IOWA 52205
 (319) 462-3785